

SOUTH 93RD BUSINESS PARK

AVAILABLE FOR LEASE

1705 SOUTH 93RD STREET | SEATTLE, WA 98101

WAREHOUSE/OFFICE SPACE WITH GREAT ACCESS



Centrally located just off the 14th Street Exit on State Route 599, this five building, 198,716 square foot office and warehouse property accommodates your expanding business with flexible space and leasing arrangements. The nearby freeways, easy access to SeaTac Airport, downtown Seattle, I-5, SR-518, and the Port of Seattle make it easy for your clients to reach you – and for your products to reach them!

PROPERTY FEATURES

- Five building complex totaling 198,716 SF provides extensive expansion opportunities
- Direct access to SR-599, I-5, SR-518, SR-509 and minutes from airports, downtown Seattle, and the Port
- 17' - 20' clear height
- Fully sprinklered
- Grade level and dock high loading
- Unincorporated King County
- No B&O tax
- Owner managed and well-maintained
- **Call broker for rates**



SPENCER MEAD
206.787.1476
smead@neilwalter.com

JIM HONAN
206.787.1464
jhonan@neilwalter.com

*professionally
managed/owned by:*



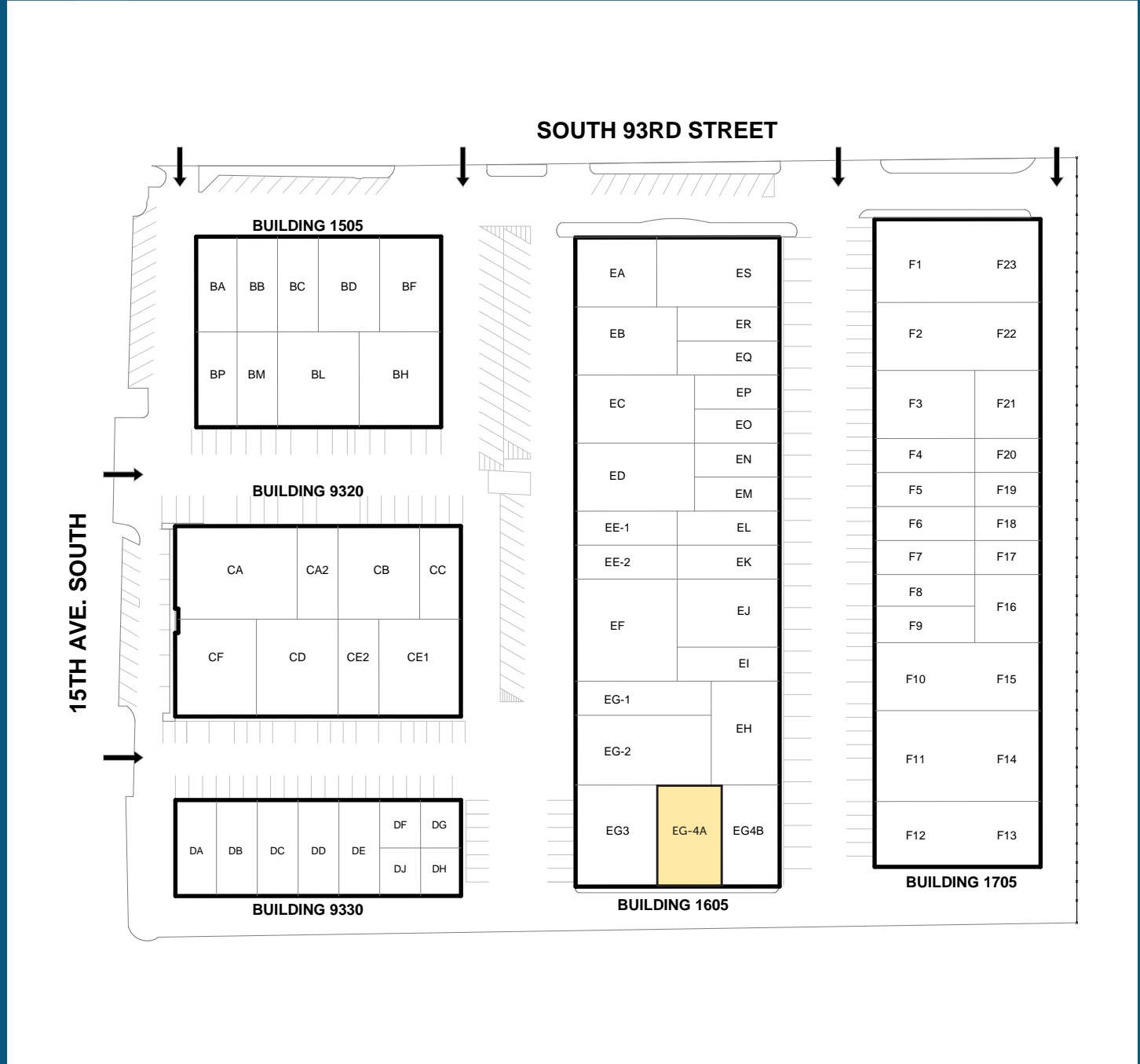
SOUTH 93RD BUSINESS PARK

1705 SOUTH 93RD STREET | SEATTLE, WA 98101



Current Lease Opportunities

Building	Suite	Total SF	Office SF	Loading	Available
1605	EG-4A	3,578 SF	229 SF	1 GL door	2/1/2026



SPENCER MEAD
206.787.1476
smead@neilwalter.com

JIM HONAN
206.787.1464
jhonan@neilwalter.com

550 S Michigan St
Seattle, WA 98108
206.787.1800
www.neilwalter.com

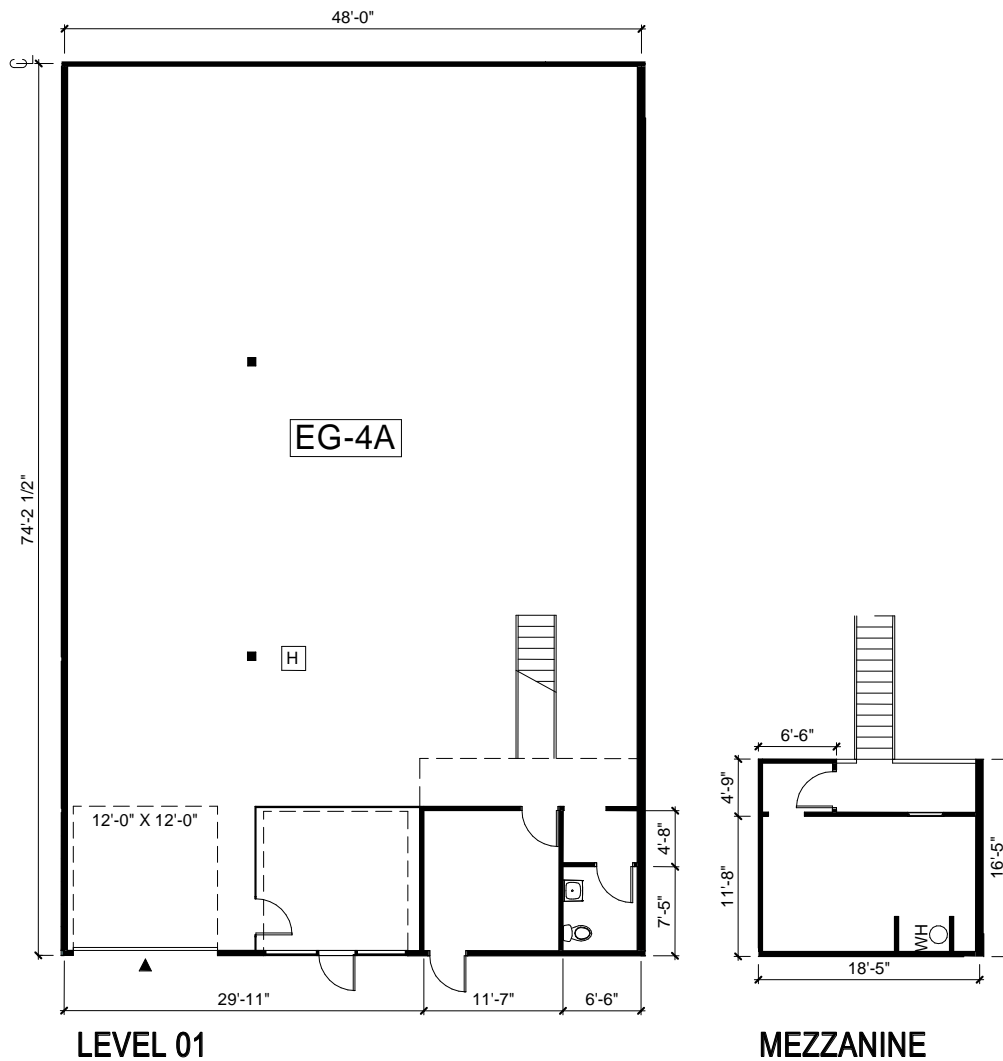
All information references in this document are approximate. The information contained herein is contained from sources deemed reliable. It is provided without representation, warranty, or guarantee, expressed or implied as to accuracy. Prospective buyer or tenant should conduct its own independent investigation relating to the property, government codes and regulations, allowed uses, and all other matters, regardless of whether they are referred to or contained in this document.

SOUTH 93RD BUSINESS PARK

1705 SOUTH 93RD STREET | SEATTLE, WA 98101



Building	Suite	Total SF	Office SF	Loading	Available
1605	EG-4A	3,578 SF	229 SF	1 GL door	2/1/2026



SPENCER MEAD
 206.787.1476
 smead@neilwalter.com

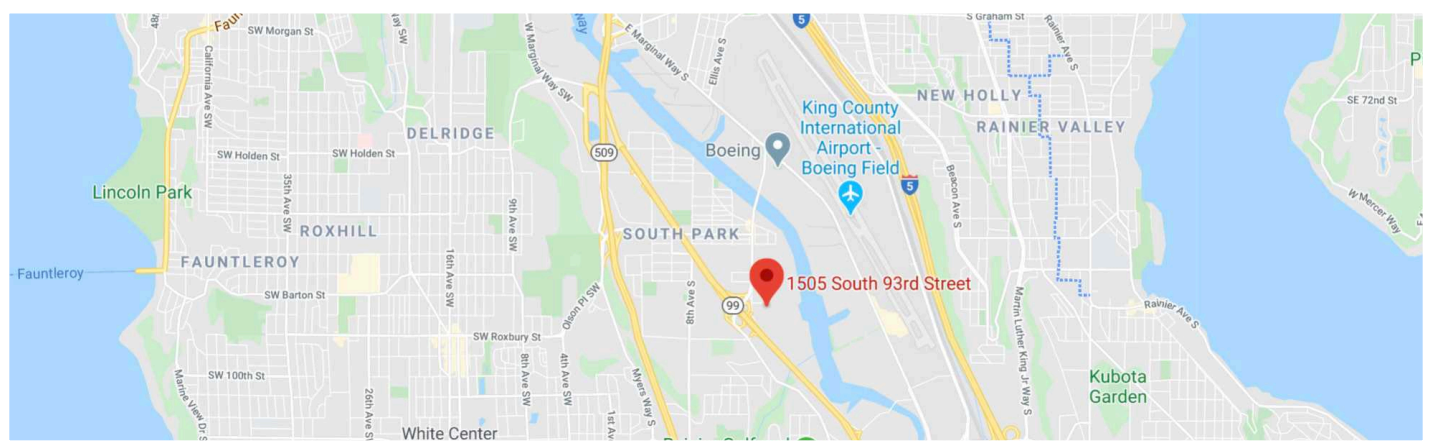
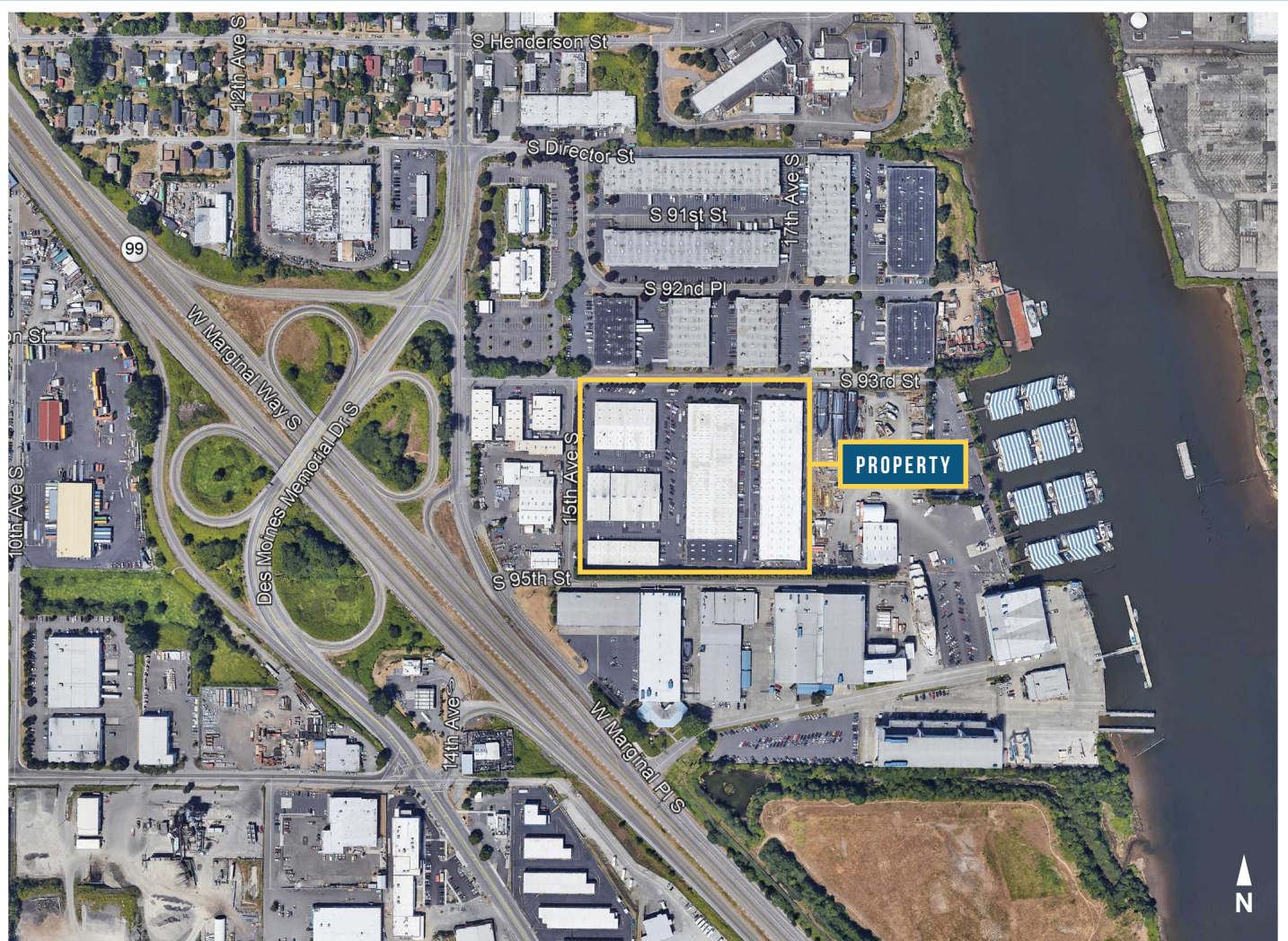
JIM HONAN
 206.787.1464
 jhonan@neilwalter.com

550 S Michigan St
 Seattle, WA 98108
 206.787.1800
 www.neilwalter.com

All information references in this document are approximate. The information contained herein is contained from sources deemed reliable. It is provided without representation, warranty, or guarantee, expressed or implied as to accuracy. Prospective buyer or tenant should conduct its own independent investigation relating to the property, government codes and regulations, allowed uses, and all other matters, regardless of whether they are referred to or contained in this document.

SOUTH 93RD BUSINESS PARK

1705 SOUTH 93RD STREET | SEATTLE, WA 98101



SPENCER MEAD
206.787.1476
smead@neilwalter.com

JIM HONAN
206.787.1464
jhonan@neilwalter.com

550 S Michigan St
Seattle, WA 98108
206.787.1800
www.neilwalter.com

All information references in this document are approximate. The information contained herein is contained from sources deemed reliable. It is provided without representation, warranty, or guarantee, expressed or implied as to accuracy. Prospective buyer or tenant should conduct its own independent investigation relating to the property, government codes and regulations, allowed uses, and all other matters, regardless of whether they are referred to or contained in this document.