

EXCLUSIVELY LEASED BY



OWNED BY



REAL ESTATE
INVESTORS

22122 76TH AVE S, KENT, WA

MILL CREEK DISTRIBUTION CENTER

*22,347 SF Industrial Space with Easy Access to I-5
and SR-167 via 76th Ave S and S 212th St Available
Now for Lease in Kent, WA*

22,347 SF
TOTAL AVAILABLE

804 SF
OFFICE AREA

22122 76TH AVE S



PROPERTY INFORMATION

22,347 SF total rentable area including 804 SF office area

8 dock-high doors, 1 ramp

21' - 22' clear height

I3 Heavy Industrial zoning (City of Kent)

Two angled trailer stalls available at no additional cost

Available now

Dock package including seals and levelers or EOD levelers on nearly every dock door

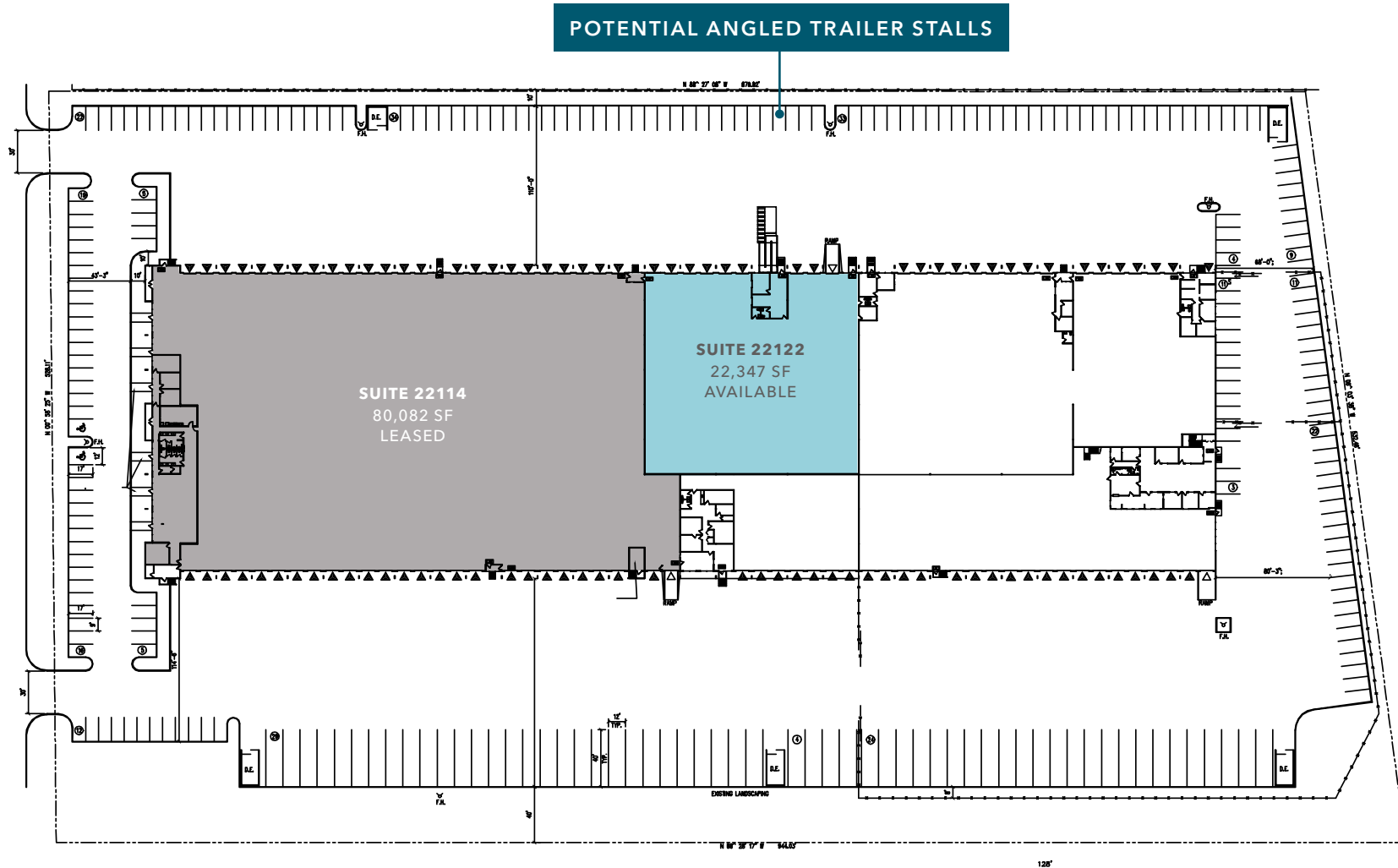
Please call brokers for rates

NOW
AVAILABLE

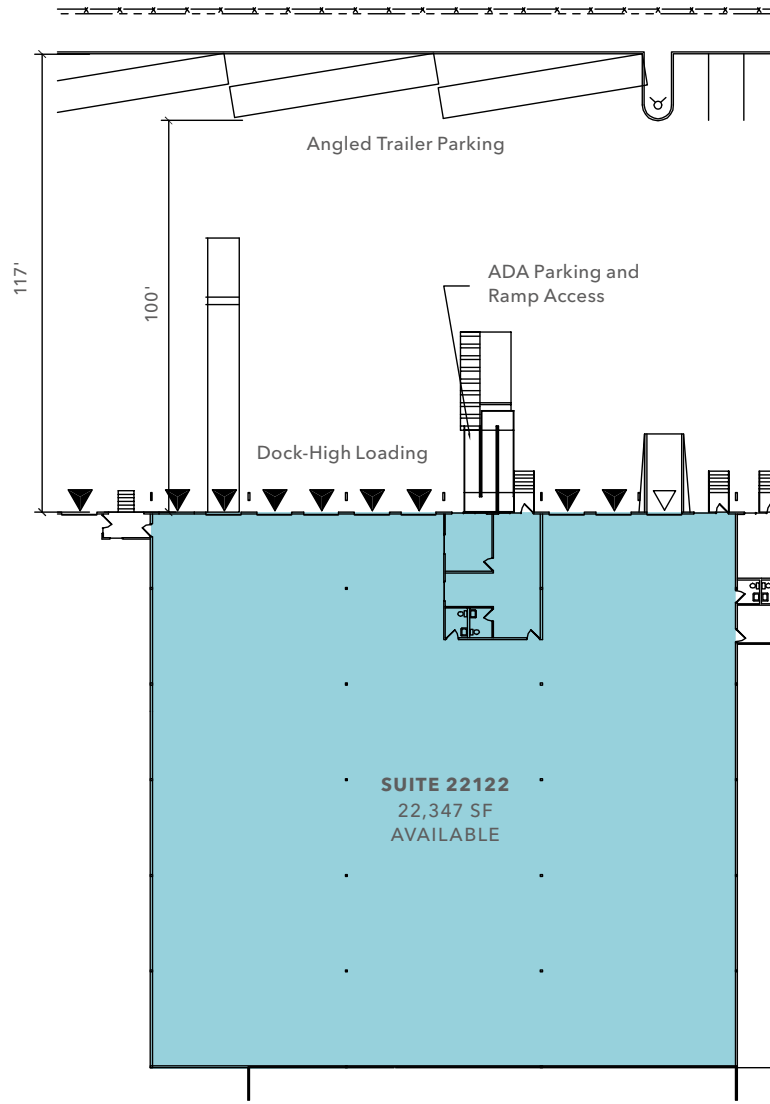
CALL
FOR RATES

The park is designed with tenants who require extensive use of dock loading.

OVERALL SITE PLAN



SUITE 22122 FLOOR PLAN



22,347 SF

TOTAL AVAILABLE

21,543 SF

WAREHOUSE

804 SF

OFFICE

22122 76TH AVE S

HIGHLY- ACCESSIBLE LOCATION

*Mill Creek Distribution
Center features easy access
to I-5 and SR-167 via 76th
Ave S & S 212th St*



12 MIN

SOUTHCENTER

28 MIN

PORT OF TACOMA

16 MIN

SEATAC AIRPORT

4 MIN

SR-167

10 MIN

I-5

25 MIN

SEATTLE CBD

AVAILABLE FOR LEASE

KIDDER MATHEWS

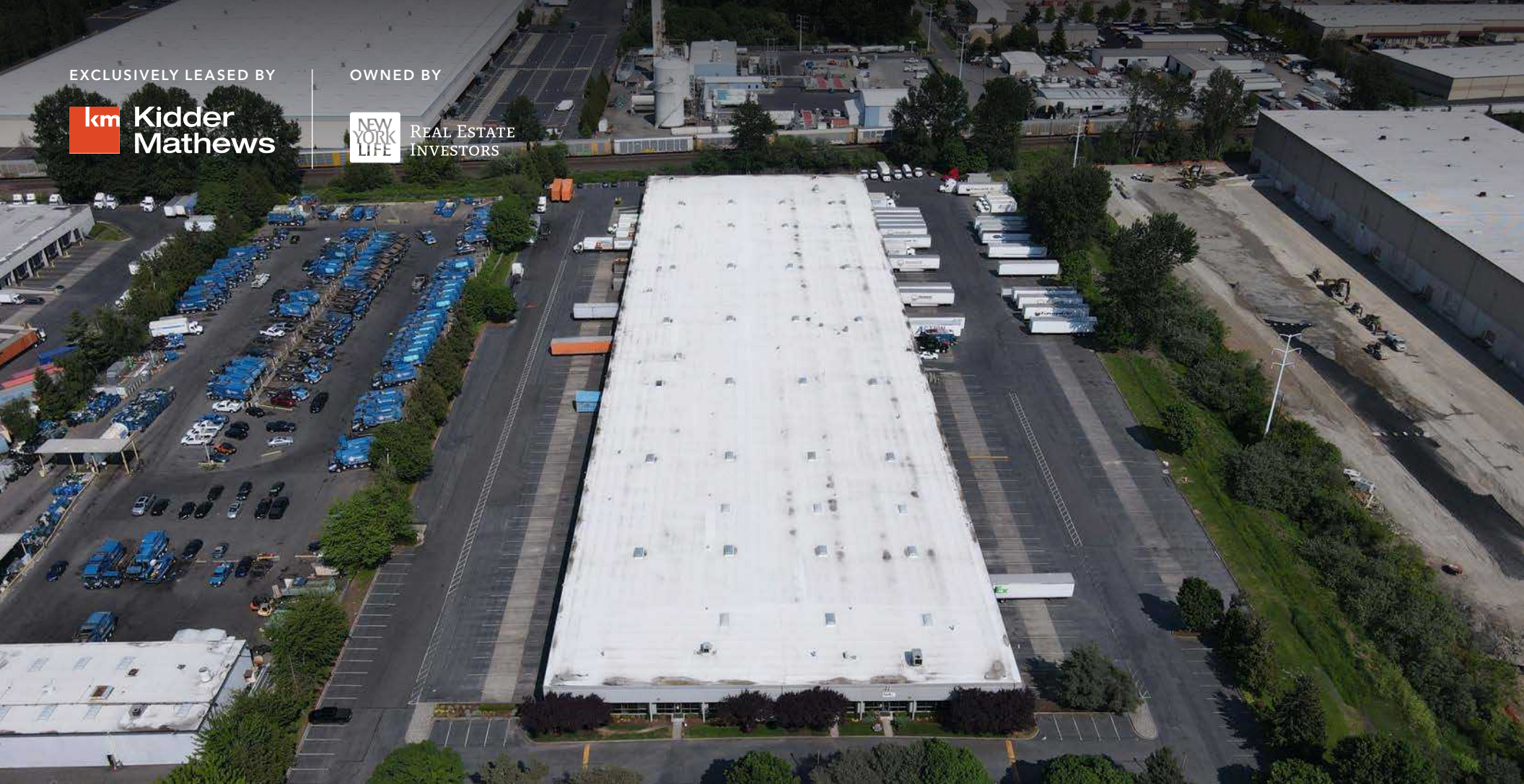
EXCLUSIVELY LEASED BY



OWNED BY



REAL ESTATE
INVESTORS



MILL CREEK DISTRIBUTION CENTER

*For more information on
this property, please contact*

DOUG KLEIN, SIOR
206.248.7348
doug.klein@kidder.com

TRAVIS STANAWAY
206.248.6526
travis.stanaway@kidder.com

KIDDER.COM

This information supplied herein is from sources we deem reliable. It is provided without any representation, warranty, or guarantee, expressed or implied as to its accuracy. Prospective Buyer or Tenant should conduct an independent investigation and verification of all matters deemed to be material, including, but not limited to, statements of income and expenses. Consult your attorney, accountant, or other professional advisor. All Kidder Mathews designs are the sole property of Kidder Mathews. Branded materials and layouts are not authorized for use by any other firm or person.

