

# Renton Medical Plaza

1412 SW 43rd St, Renton, WA 98057



OWNED & MANAGED BY

**ANCHOR**  
HEALTH PROPERTIES

EXCLUSIVELY LEASED BY

**km** Kidder  
Mathews



# Spec Suite Offerings

## SUITE INFORMATION

Suite 201: 1,598 RSF

Suite 240: 2,320 RSF

## GREAT PARKING

Parking approximately  
5 stalls/1,000 SF free parking

## REPUTABLE TENANTS

Existing medical tenants include:  
Northwest Eye Surgeons, Northwest Asthma  
& Allergy Center, Providence, and Ready  
Meds Pharmacy.

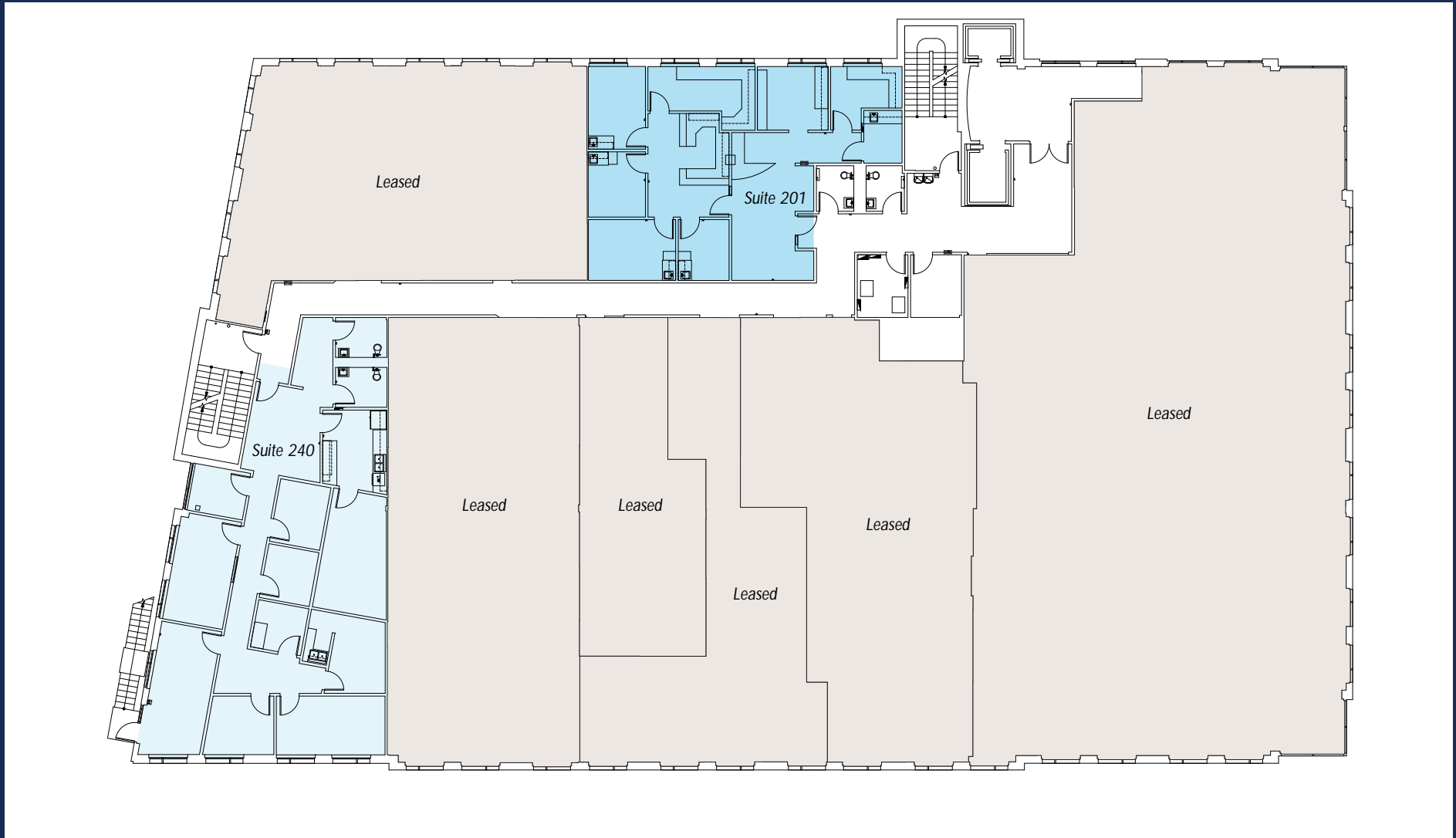
## STREET PRESENCE

Excellent street presence with monument  
signage and patient drop-off area.

## EXCELLENT LOCATION

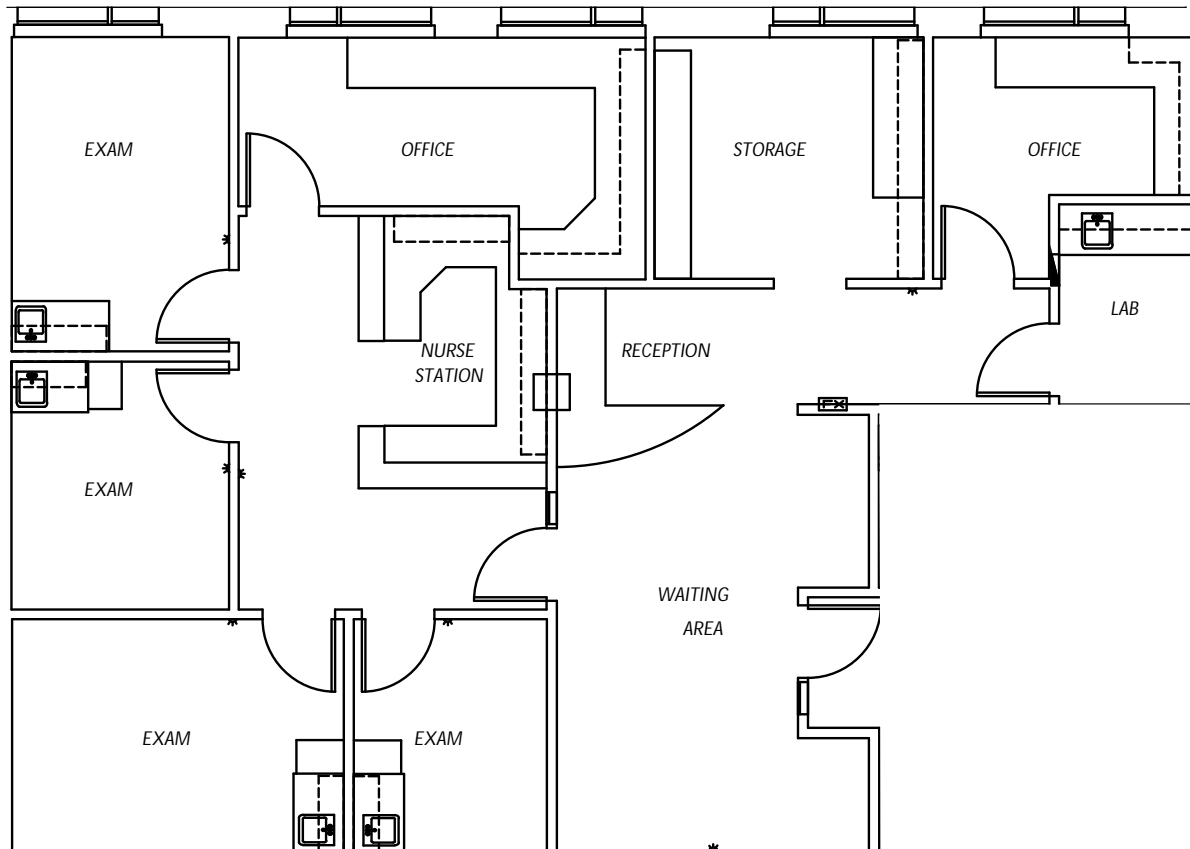
1.2 miles from Valley Medical Center,  
accessible to I-405, I-167, & I-5, walking  
distance to numerous retail, food and  
service amenities.

# Second Floor Plan



# Suite 201

4 Exam Rooms, 2 Private Offices, Nurse Station, Lab Room, Storage Room



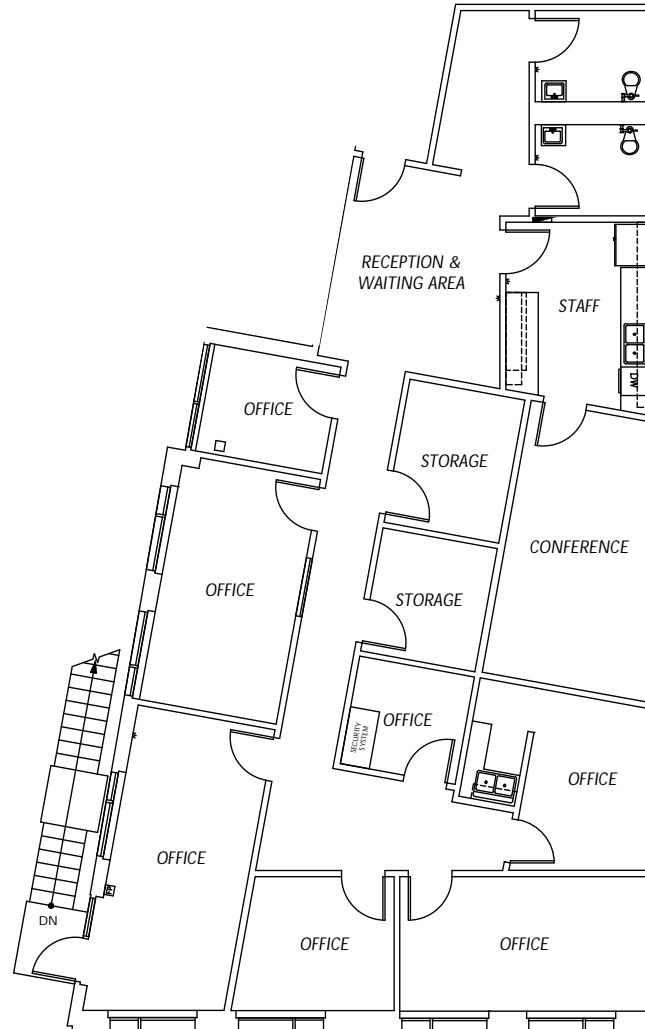
Upcoming  
AVAILABILITY

1,598  
SQUARE FEET

Inquire  
FOR LEASE RATE

# Suite 240

7 Private Offices, Conference Room, 2 Storage Rooms, In-suite Restrooms, Break Room



Upcoming  
AVAILABILITY

2,320  
SQUARE FEET

Inquire  
FOR LEASE RATE

# Main Entrance Lobby



# Common Area/Café





**WESTFIELD SOUTHCENTER**



**RENTON MEDICAL PLAZA**

**VALLEY MEDICAL CENTER**







UW Medicine

UW Medicine

THE POLYCLINIC


THE POLYCLINIC

SWEDISH

UW Medicine

RENTON MEDICAL PLAZA

UW Medicine VALLEY MEDICAL CENTER

Renton Medical Plaza

# Renton Medical Plaza

---

## **TODD BATTISON**

Senior Vice President  
206.296.9621  
todd.battison@kidder.com

## **DREW FRAME, SIOR**

Senior Vice President  
253.948.7032  
drew.frame@kidder.com

## **KIDDER.COM**

This information supplied herein is from sources we deem reliable. It is provided without any representation, warranty, or guarantee, expressed or implied as to its accuracy. Prospective Buyer or Tenant should conduct an independent investigation and verification of all matters deemed to be material, including, but not limited to, statements of income and expenses. Consult your attorney, accountant, or other professional advisor.

OWNED & MANAGED BY

**ANCHOR**  
HEALTH PROPERTIES

EXCLUSIVELY LEASED BY

**km** Kidder  
Mathews