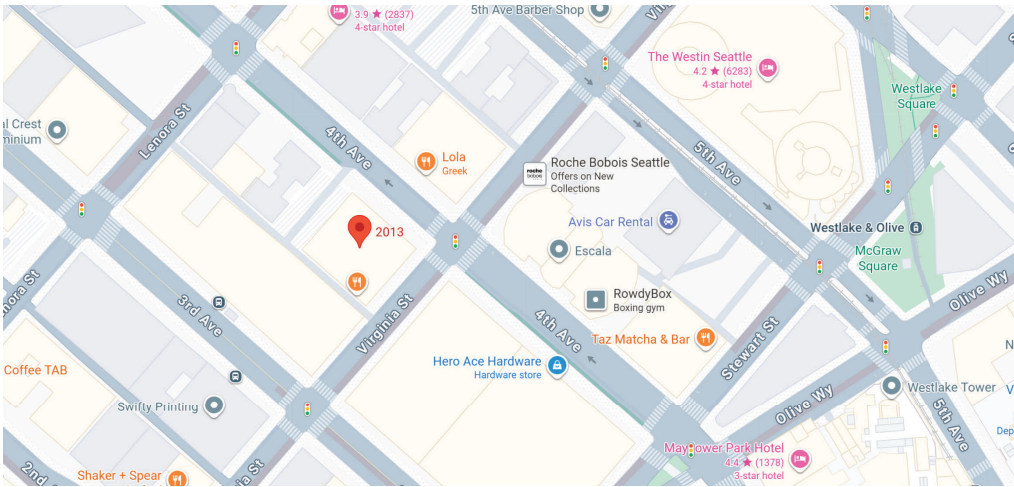


FOR LEASE

PRIME BELLTOWN OFFICE SPACE
2013 4TH AVENUE | SEATTLE, 98121



PROPERTY FEATURES



- 4th floor, 7,332 SF (Divisible to 3,300sf)
- Centrally located on 4th & Virginia near great restaurants, shopping, and hotels
- Top floor space with skylights and windows throughout.
- Two blocks from Amazon's corporate headquarters
- Abundant monthly parking located in neighboring Securities Building garage
- High-speed fiber available
- Rent: Negotiable
- Available now, please call brokers for more information.

EWING & CLARK
INCORPORATED

CAMERON
KENT

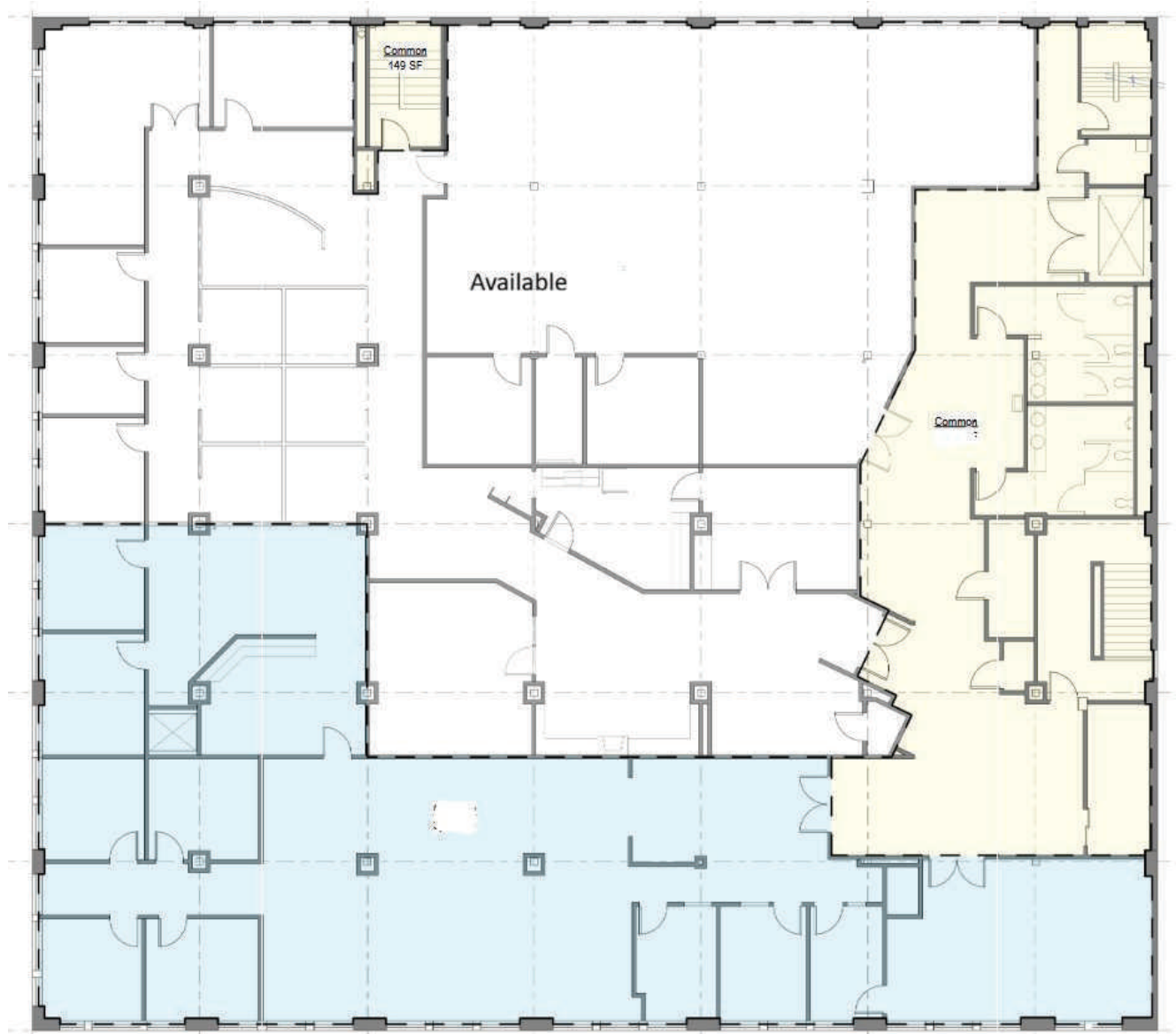
206.838.7737
ckent@ewingandclark.com

TOM
GRAFF

206.295.1445
tomgraff@ewingandclark.com

FLOOR PLAN

2013 4TH AVENUE | SEATTLE, 98121



PHOTOS

2013 4TH AVENUE | SEATTLE, 98121



**CAMERON
KENT**

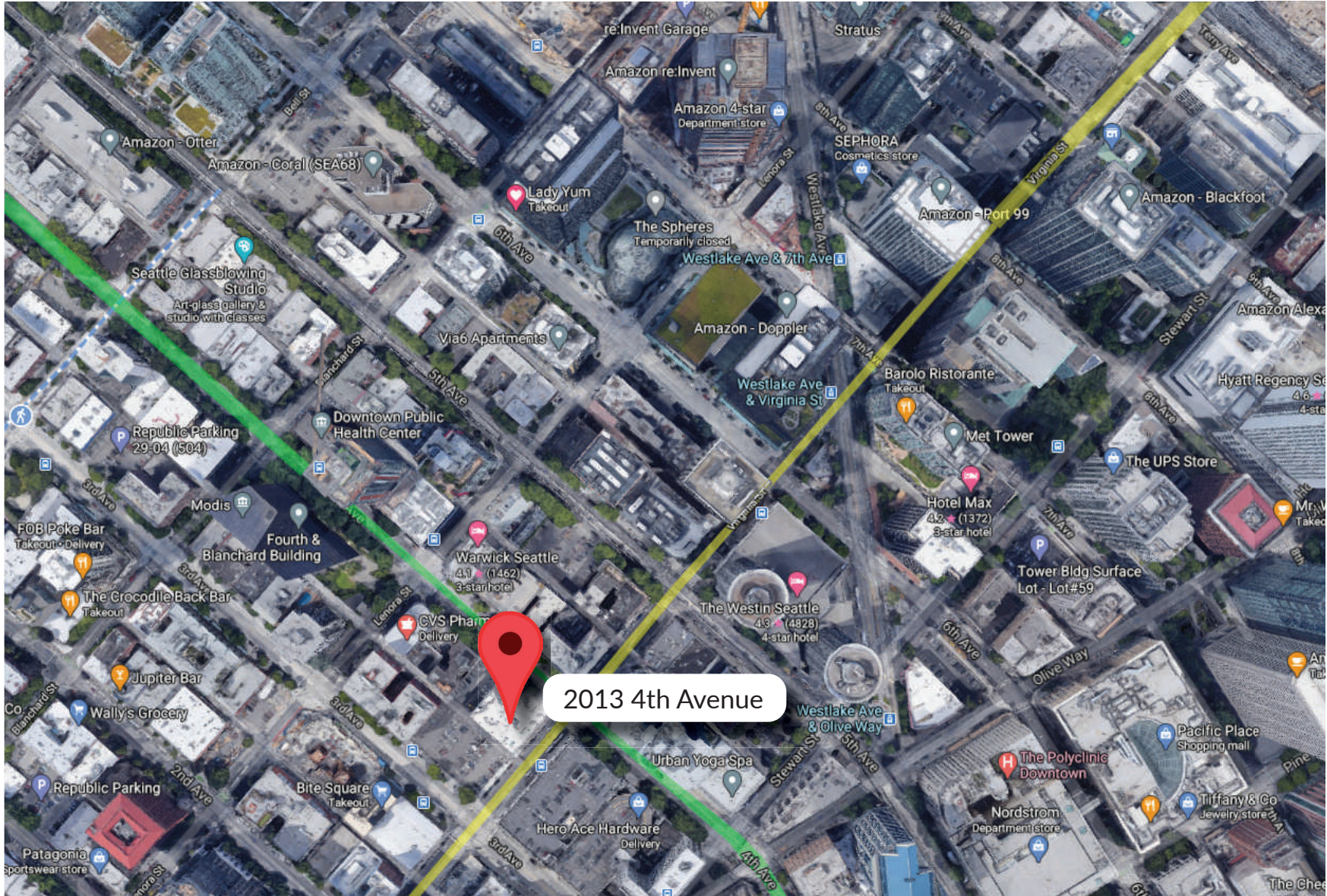
206.838.7737
ckent@ewingandclark.com

**TOM
GRAFF**

206.295.1445
tomgraff@ewingandclark.com

AERIAL MAP

2013 4TH AVENUE | SEATTLE, 98121



CAMERON
KENT

206.838.7737
ckent@ewingandclark.com

TOM
GRAFF

206.295.1445
tomgraff@ewingandclark.com