

# East Campus Corporate Park IV

Turn-Key Deals on 5+ Year Leases

3450 S 344TH WAY, FEDERAL WAY, WA



PLAY  
VIDEO

Owned by



**ROSEN HARBOTTLE**  
COMMERCIAL REAL ESTATE

Leasing by



**Kidder  
Mathews**



East Campus Corporate Park IV is a two-story, Class A office building located off Highway 18 in East Campus, Federal Way



\$17.00 PSF, NNN  
(\$10.93 PSF inclusive of all utilities and in-suite janitorial)



Renovations include lobby, common areas, bathrooms, and exterior



2,225 RSF - 2,808 RSF available



Immediate access to I-5 and SR-18

# Location

Ease of access  
to amenities,  
Highways 18  
and Interstate 5

## THE COMMONS

TARGET

CINEMARK  
The Best Seat In Town

KOHL'S

DICK'S  
SPORTING GOODS

macy's

Famous  
Footwear

## CELEBRATION PARK

Virginia Mason  
Franciscan Health

WinCo  
FOODS



East Campus  
Corporate Park IV

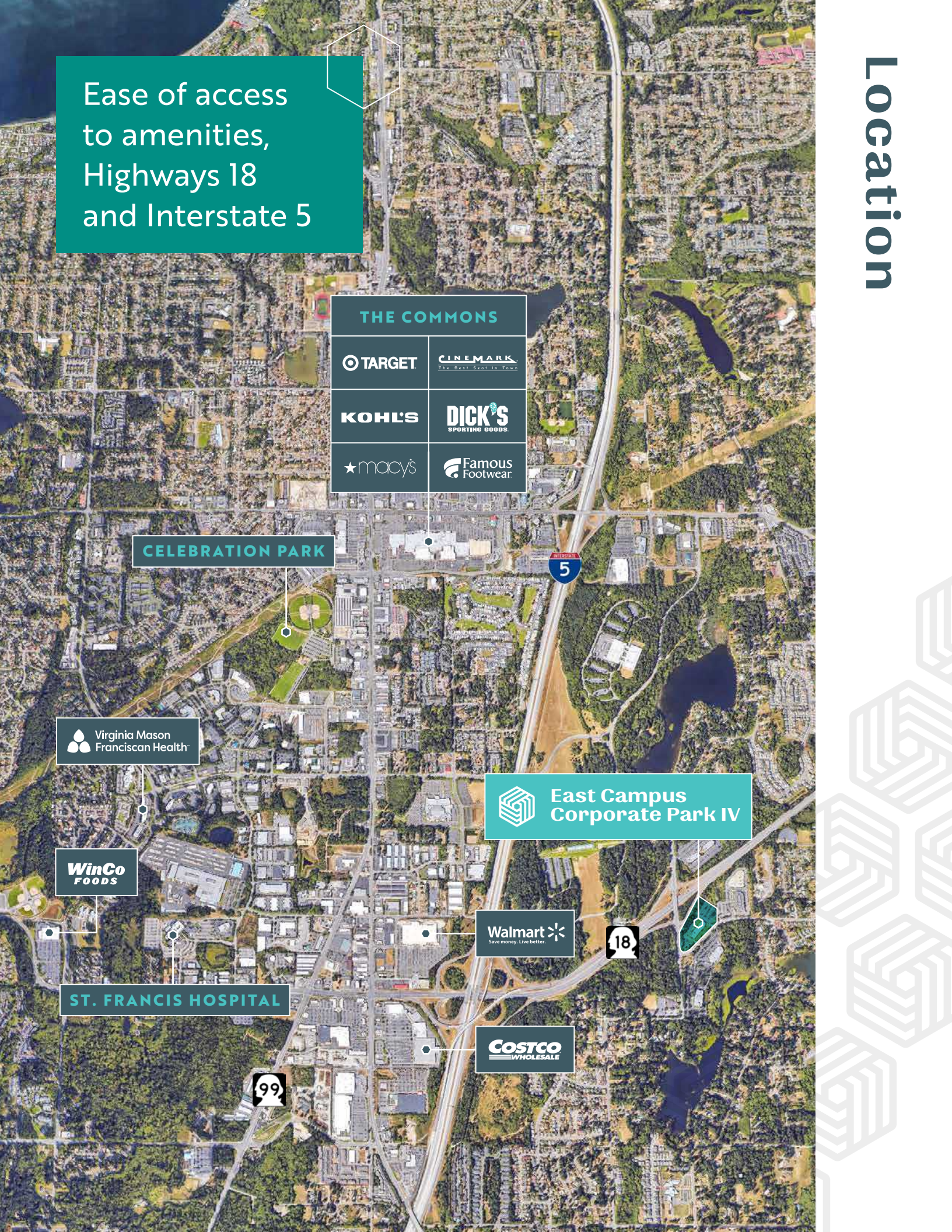
Walmart  
Save money. Live better.



## ST. FRANCIS HOSPITAL



COSTCO  
WHOLESALE

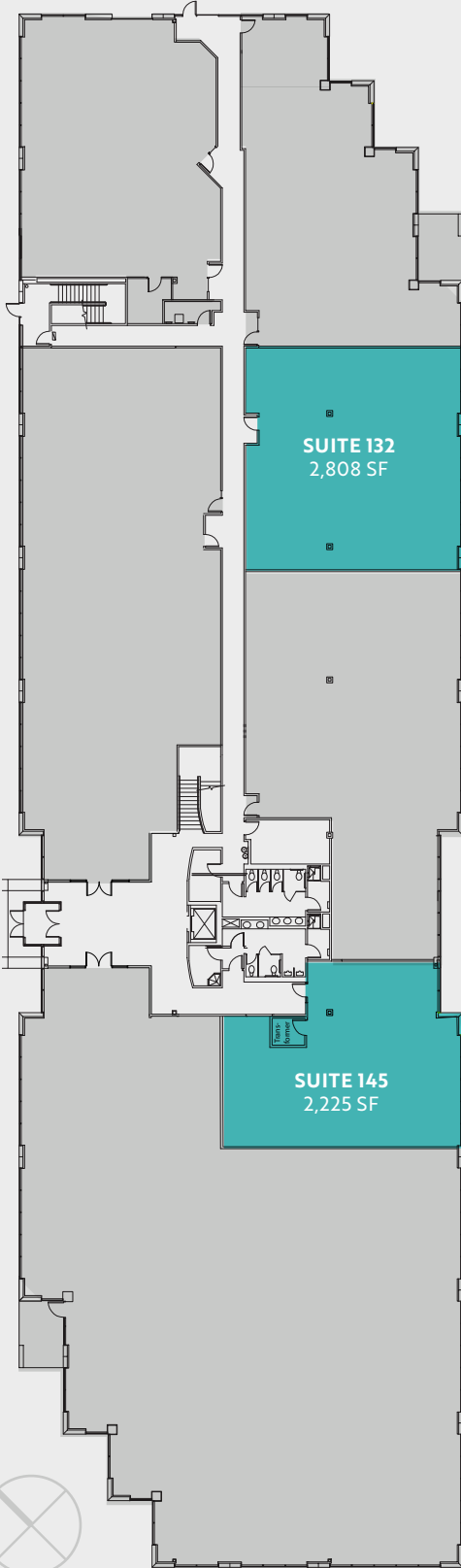


# Modern interiors. Natural surroundings.



# 1st floor

ECCP IV



Suite	Size	Features
132	2,808 SF	New LED lighting and new carpet
145	2,225 SF	New LED lighting and new carpet

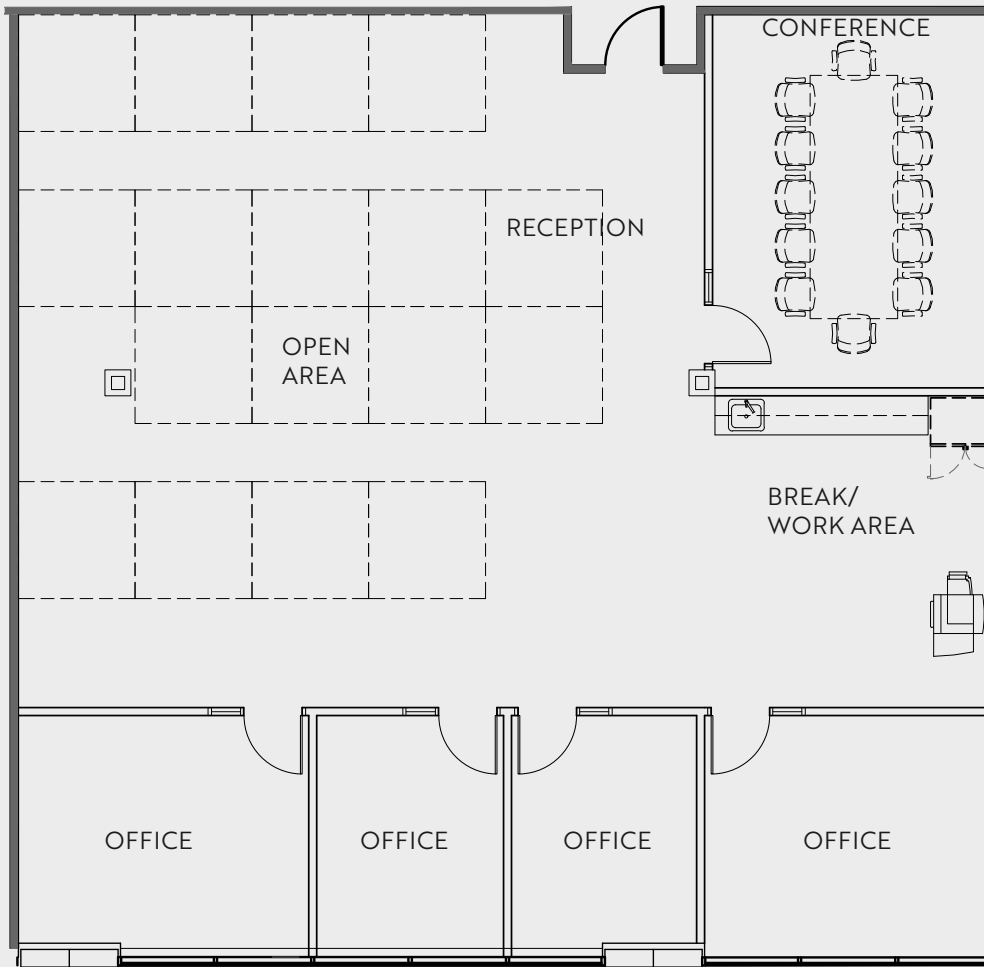
# Availabilities



# 1st floor

ECCP IV

SUITE 132: 2,808 SF TEST FIT



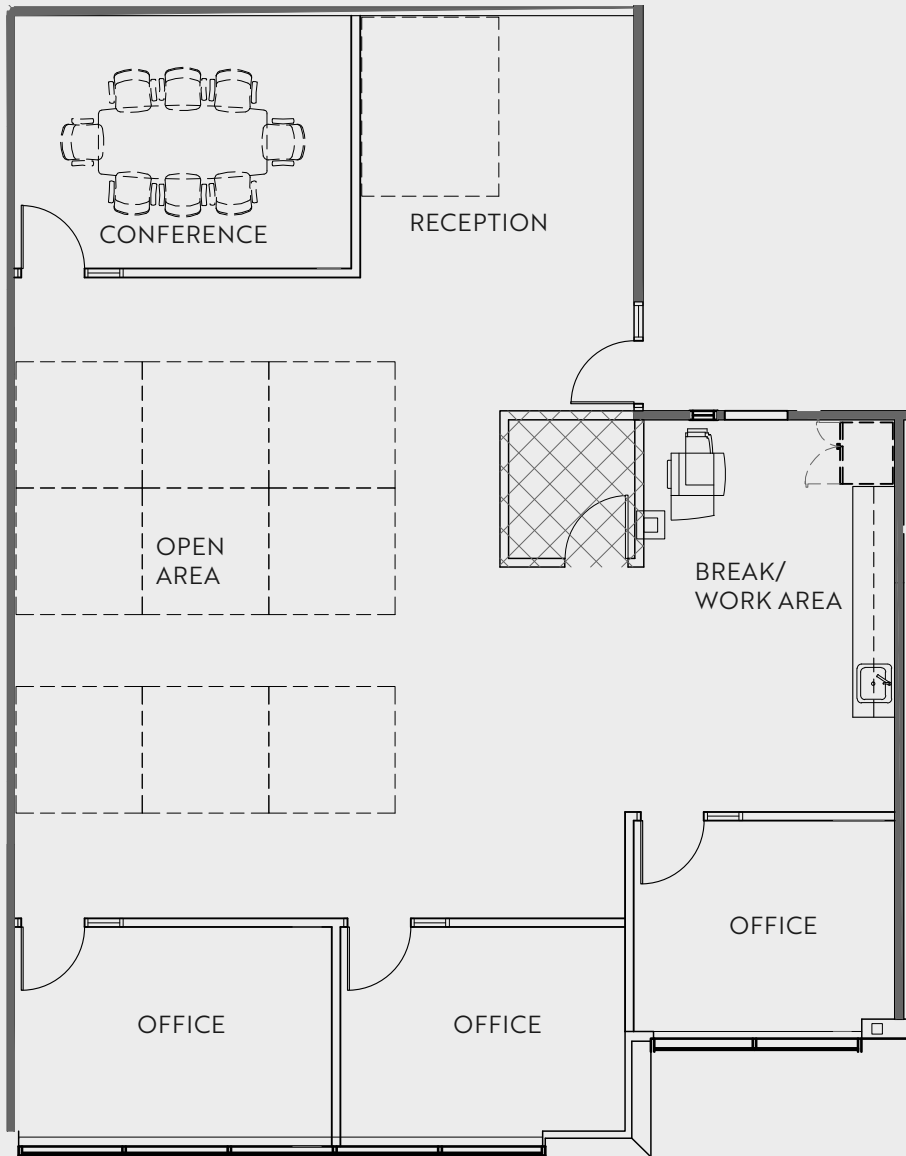
Availabilities



# 1st floor

ECCP IV

SUITE 145: 2,225 SF TEST FIT



Availabilities





# The Campus





 **East Campus  
Corporate Park IV**

# East Campus Corporate Park IV

3450 S 344TH WAY  
FEDERAL WAY, WA

**DREW FRAME, SIOR**  
253.948.7032  
drew.frame@kidder.com

**RYAN KERSHAW**  
206.949.1334  
ryan.kershaw@kidder.com

Owned by



**ROSEN HARBOTTLE**  
COMMERCIAL REAL ESTATE

**KIDDER.COM**

This information supplied herein is from sources we deem reliable. It is provided without any representation, warranty, or guarantee, expressed or implied as to its accuracy. Prospective Buyer or Tenant should conduct an independent investigation and verification of all matters deemed to be material, including, but not limited to, statements of income and expenses. Consult your attorney, accountant, or other professional advisor.

Leased by



**Kidder  
Mathews**