

FOR LEASE

43,200 SF Building

1701 Pike St NW, Auburn, WA



NEWMARK

Thad Mallory, SIOR | 425-362-1410 | thad.mallory@nmrk.com

Taylor Hoff, SIOR | 425-362-1388 | taylor.hoff@nmrk.com

Morgan Richey, SIOR | 425-362-1409 | morgan.richey@nmrk.com

PROPERTY HIGHLIGHTS

43,200 SF Building
1701 Pike St NW, Auburn, WA

Address: 1701 Pike St NW
Auburn, WA

Building: Total Available: 43,200 SF
Office: 2,360 SF

Clear Height: 25'

Loading: 10 Dock High Doors (Cross-Loaded)

Notes: 12 Trailer Stalls
Secured & Fenced Truck Court
Truck Scale

Power: Heavy Power – Tenant to Verify

NNN: \$0.34

Lease Rate: Call Brokers For Pricing



NEWMARK

Thad Mallory, SIOR | 425-362-1410 | thad.mallory@nmrk.com

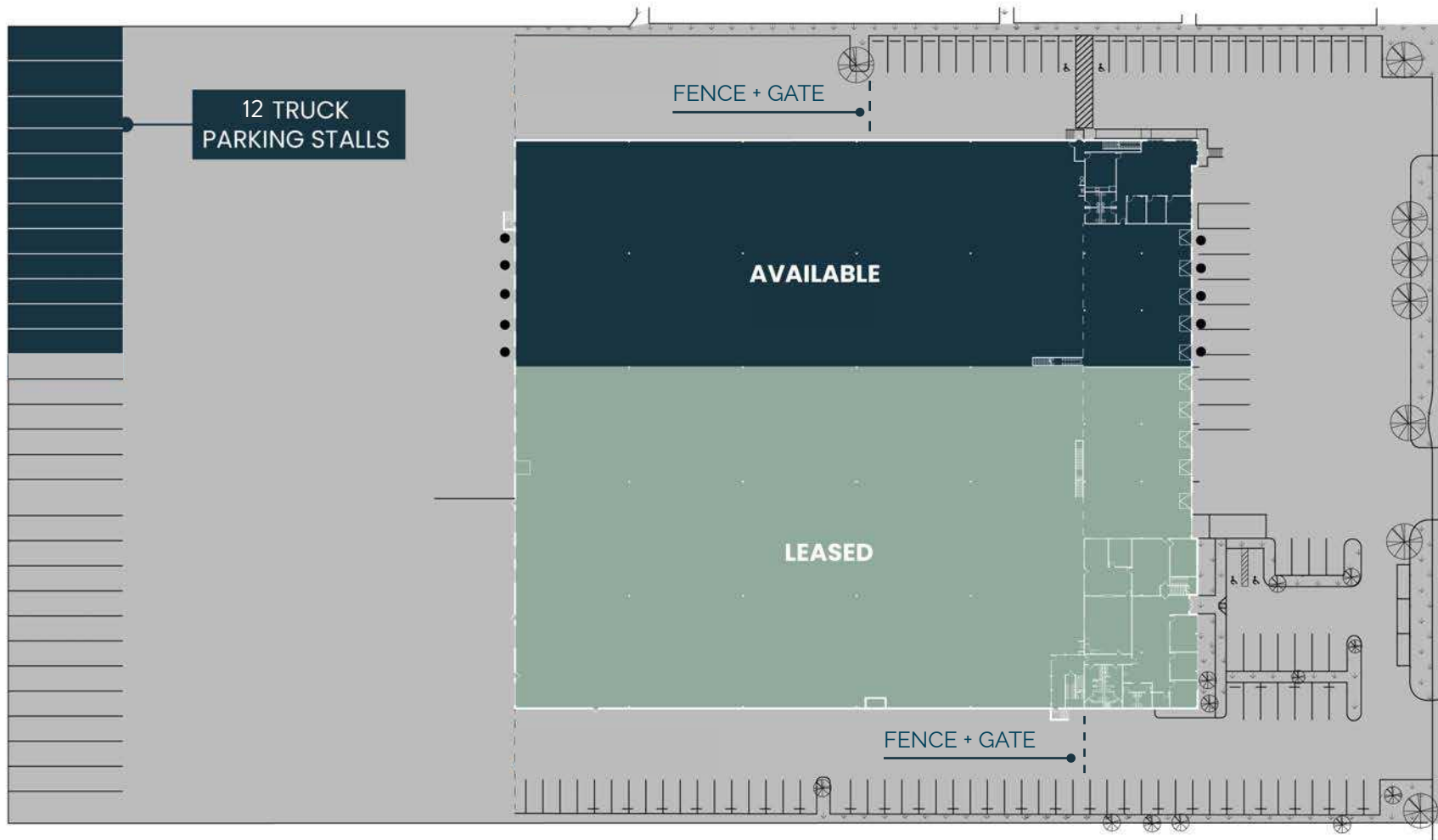
Taylor Hoff, SIOR | 425-362-1388 | taylor.hoff@nmrk.com

Morgan Richey, SIOR | 425-362-1409 | morgan.richey@nmrk.com

FLOOR PLAN

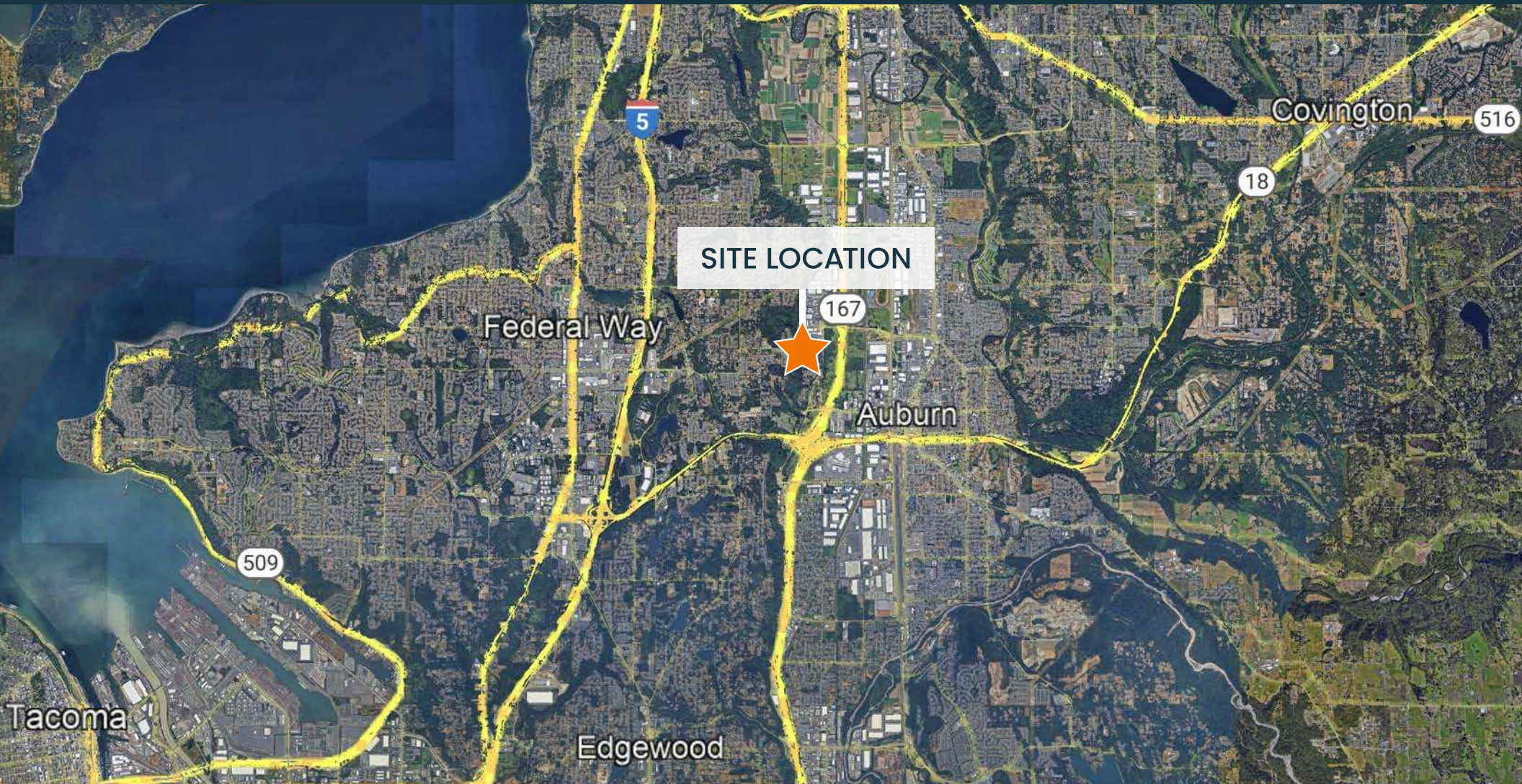
43,200 SF Building

1701 Pike St NW, Auburn, WA



AERIAL MAP

43,200 SF Building
1701 Pike St NW, Auburn, WA



NEWMARK

Thad Mallory, SIOR | 425-362-1410 | thad.mallory@nmrk.com

Taylor Hoff, SIOR | 425-362-1388 | taylor.hoff@nmrk.com

Morgan Richey, SIOR | 425-362-1409 | morgan.richey@nmrk.com

1701 PIKE ST NW

AUBURN, WA

THAD MALLORY, SIOR

thad.mallory@nmrk.com

425-362-1410

TAYLOR HOFF, SIOR

taylor.hoff@nmrk.com

425-362-1388

MORGAN RICHEY, SIOR

morgan.richey@nmrk.com

425-362-1409

NEWMARK

The distributor of this communication is performing acts for which a real estate license is required. The information contained herein has been obtained from sources deemed reliable but has not been verified and no guarantee, warranty or representation, either express or implied, is made with respect to such information. Terms of sale or lease and availability are subject to change or withdrawal without notice.