

4801 E 8TH STREET
**WAREHOUSE
SUBLEASE**

CBRE

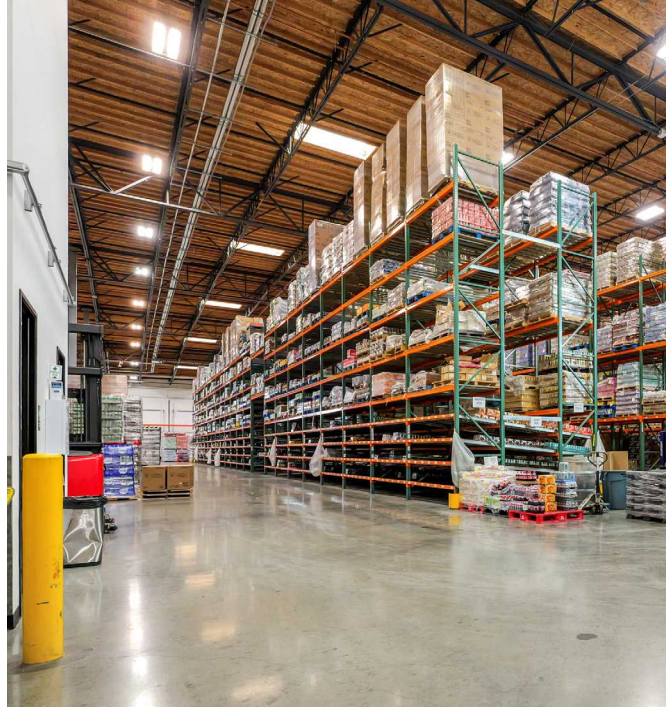
PROLOGIS PARK TACOMA BUILDING D
4801 E 8TH STREET
TACOMA, WA 98424



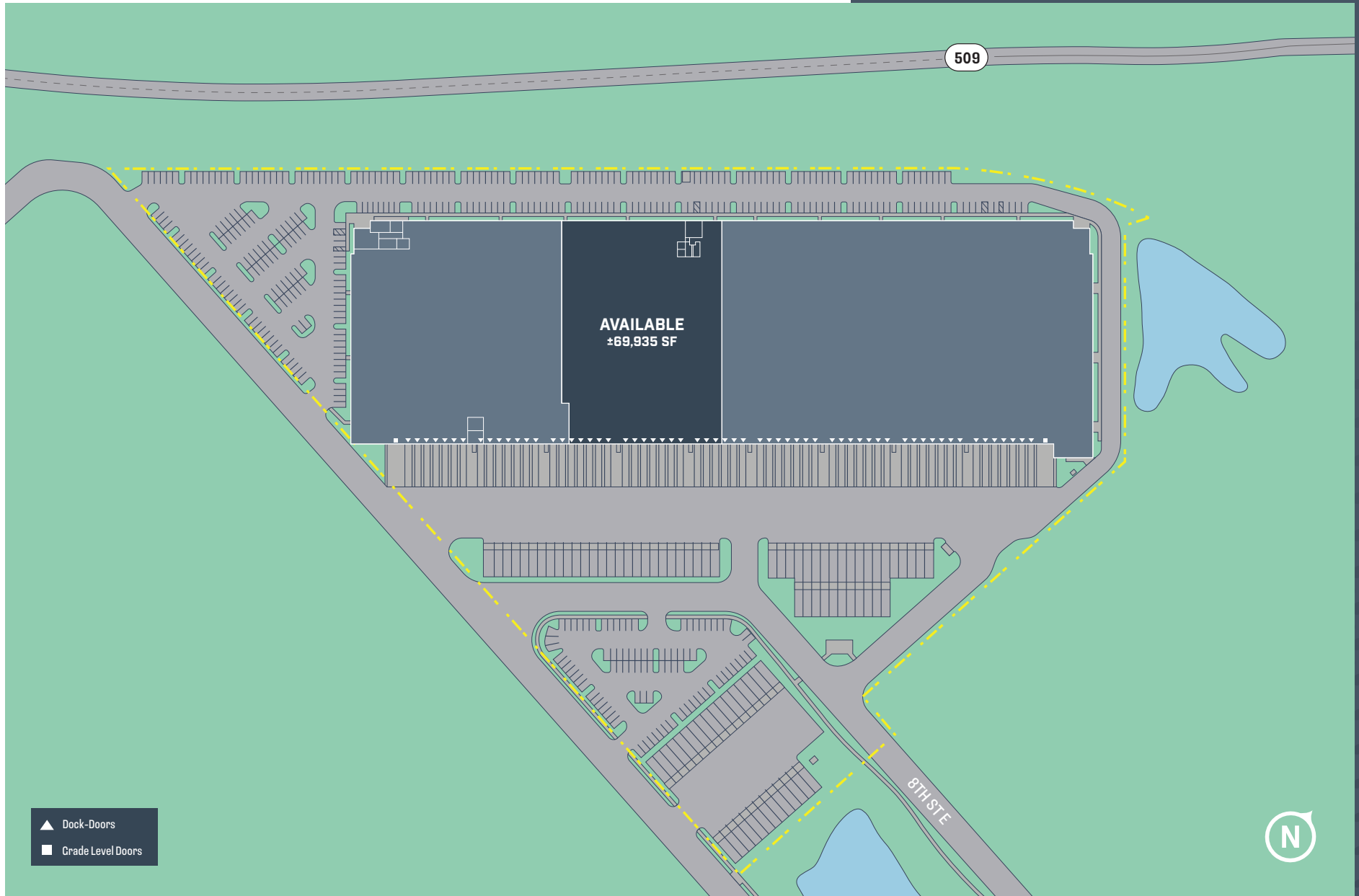
**69,335 SF
SPACE FOR LEASE**

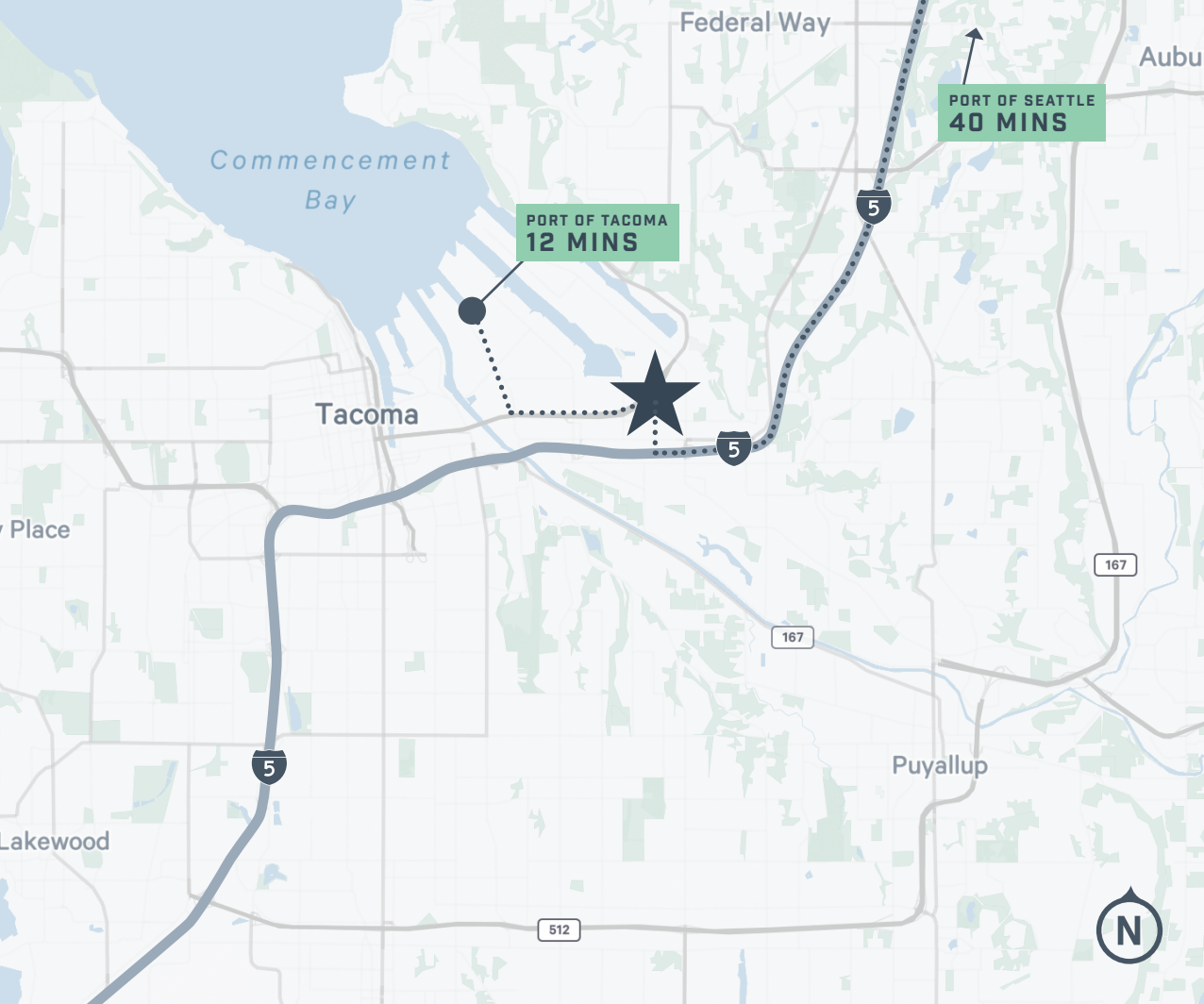
PROPERTY OVERVIEW

- Available 4/1/26
- Plug-and-play sublease
- 12/31/28 master lease expiration
- Approximately 69,335 total SF
- +/- 3,300 SF office, including +/- 800 SF shipping/receiving office
- Space includes a ±6,500 SF cooler at 36°
- Excellent freeway access
- Located adjacent to the Port of Tacoma
- Close proximity to the cargo terminals
- Immediate access to 54th Ave East and less than ½ mile to I-5
- Cooler and racking available; negotiable
- 36' clear height
- 15 dock doors with levelers
- Trailer parking available



SITE PLAN





PROLOGIS PARK TACOMA BUILDING D
4801 E 8TH STREET
TACOMA, WA 98424

4801 E 8TH STREET
**WAREHOUSE
SUBLEASE**

69,335 SF
SPACE FOR LEASE

TOM ROGERS
First Vice President
+1 425 495 6114
tom.rogers@cbre.com

MARK RODDY
Vice President
+1 253 514 0299
mark.rodny@cbre.com

CBRE

© 2025 CBRE, Inc. All rights reserved. This information has been obtained from sources believed reliable, but has not been verified for accuracy or completeness. You should conduct a careful, independent investigation of the property and verify all information. Any reliance on this information is solely at your own risk. CBRE and the CBRE logo are service marks of CBRE, Inc. All other marks displayed on this document are the property of their respective owners, and the use of such logos does not imply any affiliation with or endorsement of CBRE. Photos herein are the property of their respective owners. Use of these images without the express written consent of the owner is prohibited. BSO_12.29.25