

FOR SALE OR LEASE

# PLAY VISIONS BLDG

*A 28,225 SF Office/Warehouse for Sale or Lease in Woodinville, WA*



19180 144TH AVE NE, WOODINVILLE, WA 98072

**km** Kidder  
Mathews



*The Play Visions Building Is A Prime Asset In An Outstanding Eastside Submarket*

**PROPERTY INFORMATION**

ADDRESS	19180 144th Ave NE Woodinville, WA 98072
PARCEL NO.	032605-9113
LAND AREA	71,215 SF
BUILDING AREA	28,225 SF
YEAR BUILT	1998
ZONING	(I) Industrial
LOADING	Dock and Grade
CLEAR HEIGHT	25'
SPRINKLERED	Yes
HEAVY POWER	3-phase, 120/208v, 600 amps
OFFICE SPACE	Perimeter private offices (deck off of 3 offices), open office area, kitchen and conference rooms

*28,225 SF*

AVAILABLE

# PLAY VISIONS BLDG



28,225  
AVAILABLE SF  
WITH 5,400 SF  
OF OFFICE



25' CEILING  
CLEARANCE  
WITH SPRINKLERS  
IN PLACE



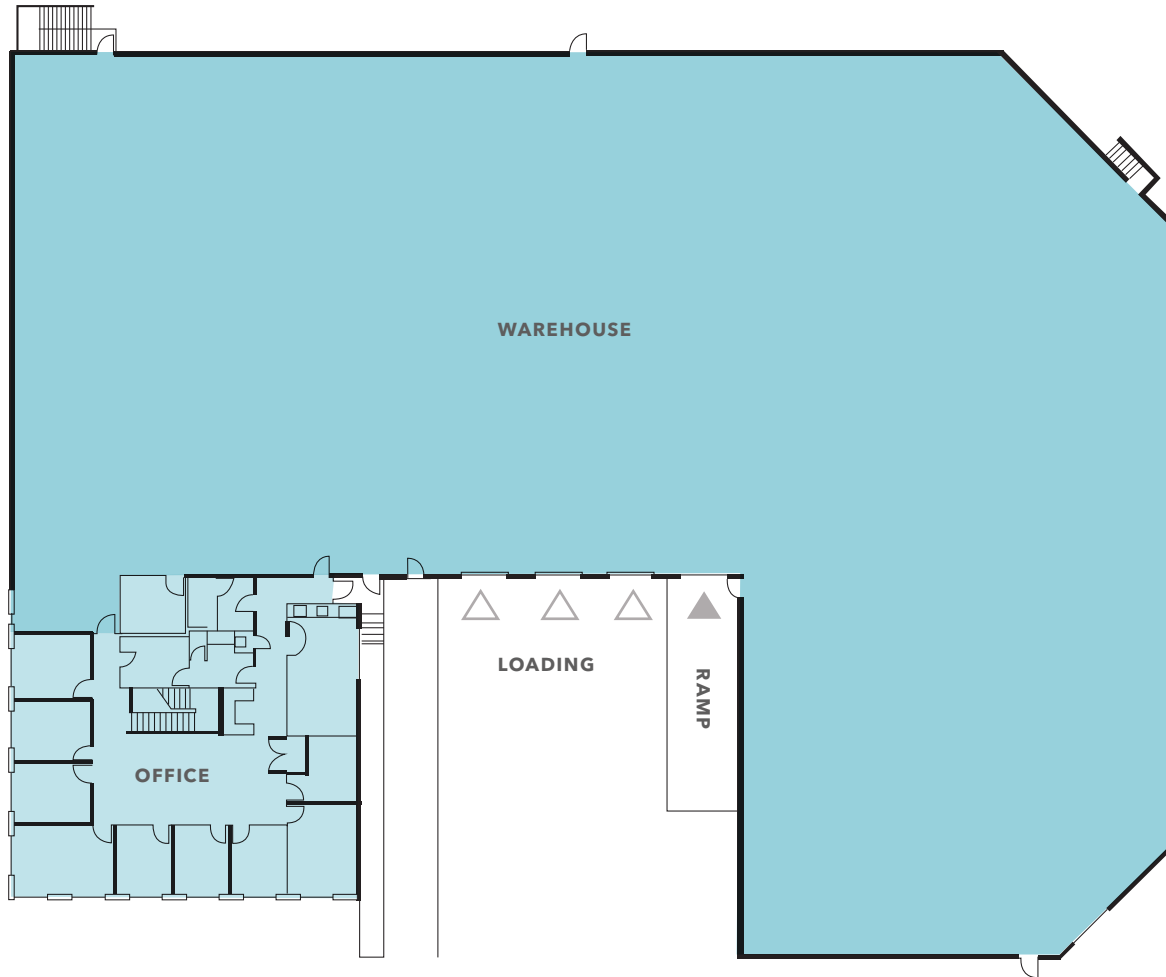
1 GRADE-LEVEL  
& 3 DOCK-HIGH  
LOADING DOORS



CONVENIENT  
LOCATION  
NEAR MAJOR  
THOROUGHFARES



# FLOOR PLAN



▲ Grade level loading    ▲ Dock-high loading    ■ Warehouse    ■ Office

*28,225 SF*

TOTAL AVAILABLE

*5,400 SF*

OFFICE

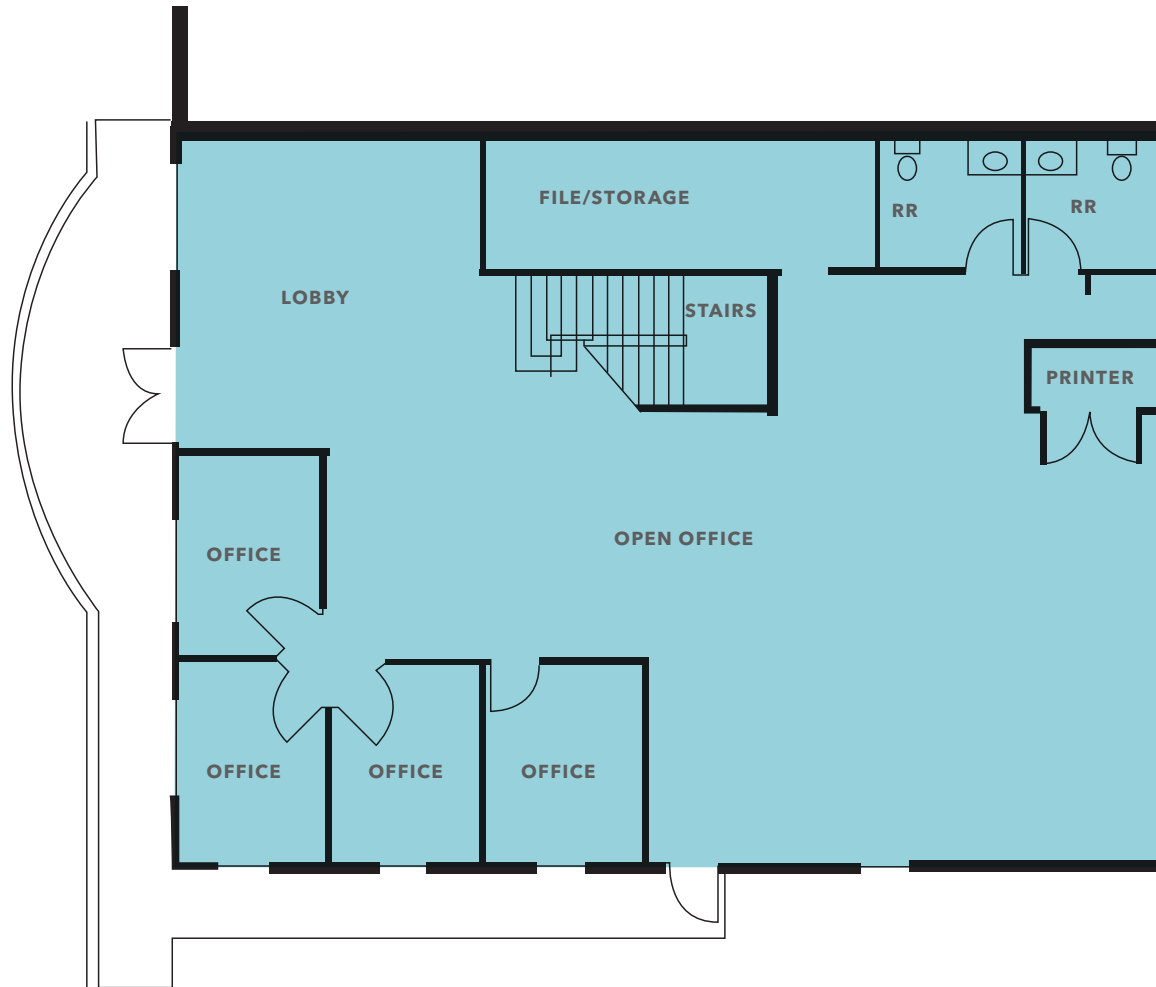
*NOW*

AVAILABLE

*CALL*

BROKERS FOR RATES

# FIRST FLOOR OFFICE



*28,225 SF*

TOTAL AVAILABLE

*5,400 SF*

OFFICE

*NOW*

AVAILABLE

*CALL*

BROKERS FOR RATES

## SECOND FLOOR OFFICE



*28,225 SF*

TOTAL AVAILABLE

*5,400 SF*

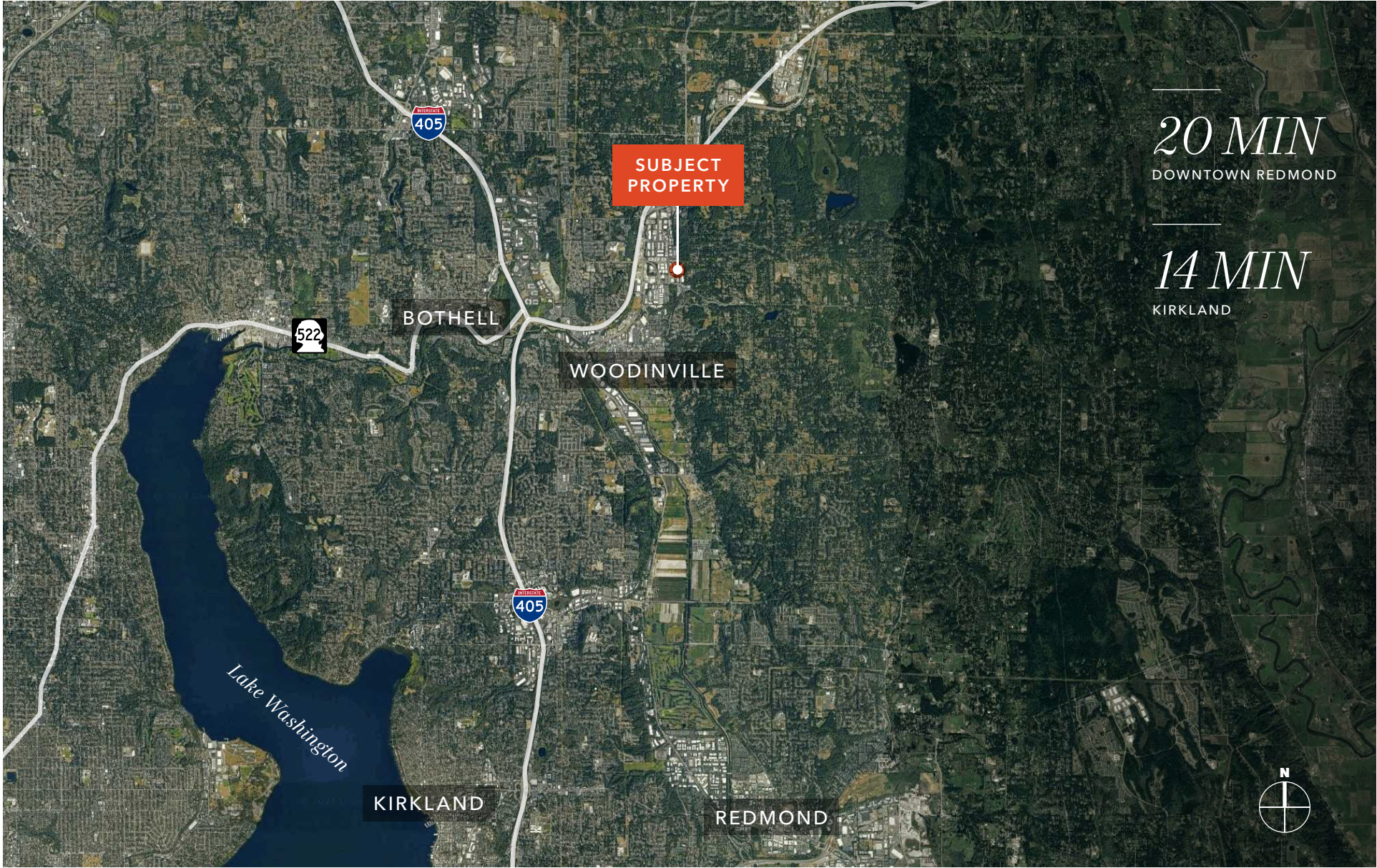
OFFICE

*NOW*

AVAILABLE

*CALL*

BROKERS FOR RATES





## *Call Brokers for Rates*

**TODD GAUTHIER**  
Executive Vice President  
425.450.1118  
todd.gauthier@kidder.com

**JASON BLOOM**  
Executive Vice President  
425.450.1102  
jason.bloom@kidder.com

**CARTER NICHOLSON**  
Associate  
425.450.1145  
carter.nicholson@kidder.com

**KIDDER.COM**