

FOR LEASE

# SOUTH TACOMA BUSINESS PARK

3901 - 3913 STEILACOOM BLVD SW LAKEWOOD, WA

AVAILABLE  
PROPERTY

STEILACOOM BLVD SW

KIDDER.COM

km Kidder  
Mathews



## *Property Highlights*

3,200 SF space available

\$1.00 + NNN Lease Rate

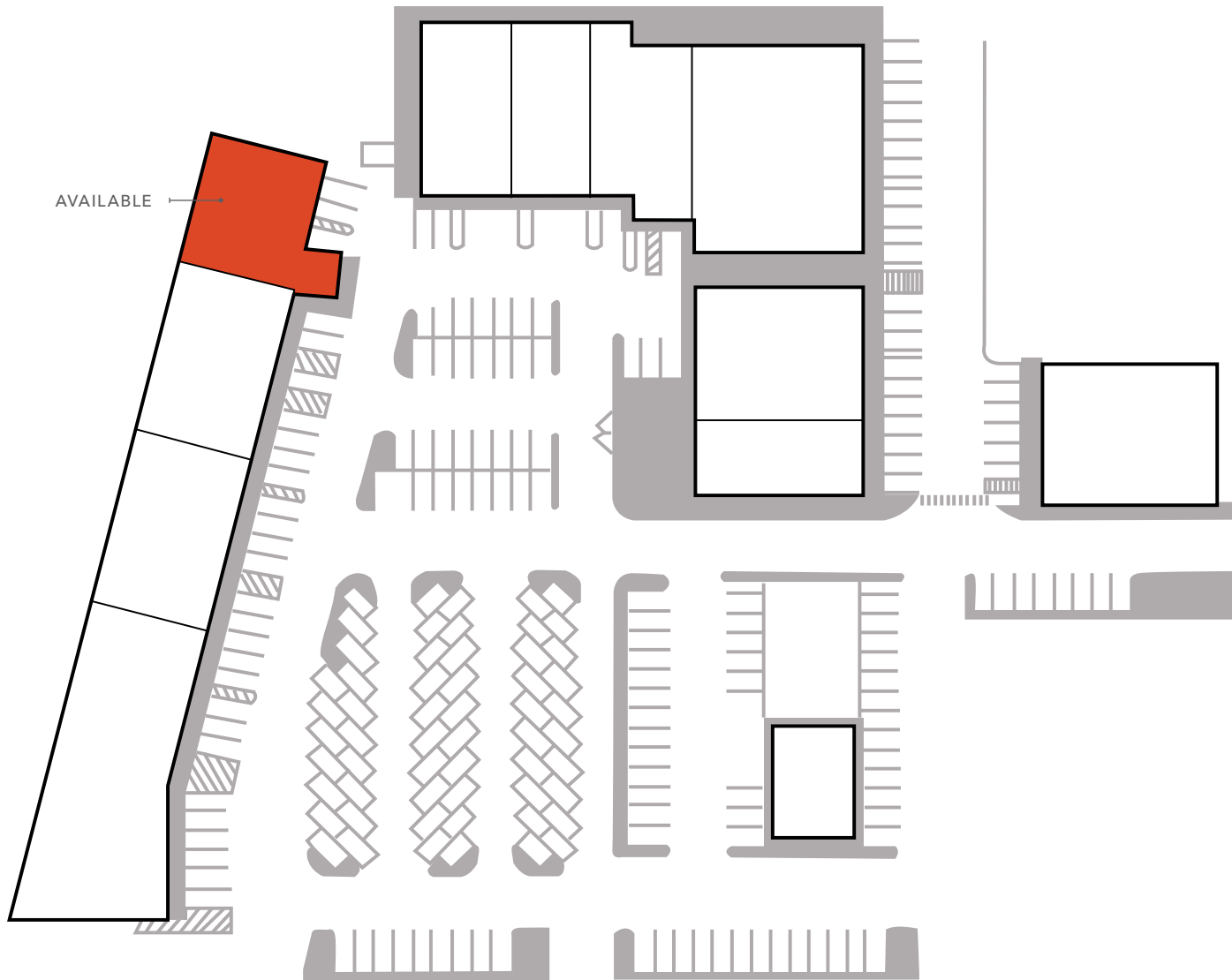
One - 10 foot grade-level door

12' - 14' warehouse clear height

Fire suppression systems throughout industrial building

217 parking stalls (common area parking)





3,200 SF

AVAILABLE

\$1.00

NNN, LEASE RATE

NOW

AVAILABLE

SOUTH TACOMA BUSINESS PARK



# SOUTH TACOMA BUSINESS PARK



*5 MINS*

TO I-5

*6 MINS*

TO HWY 512

*7 MINS*

TO HWY 7

*11 MINS*

TO HWY 16

*14 MINS*

TO HWY 509

**SUBJECT  
PROPERTY**

**JOINT BASE  
LEWIS-MCCHORD**

AVAILABLE  
PROPERTY

STEILACOOM BLVD SW

*Exclusively listed by*

**HUNTER CLARKE**

First Vice President

253.722.1454

hunter.clarke@kidder.com

**CORY NABER**

Vice President

253.722.1456

cory.naber@kidder.com

**KIDDER.COM**