

# FOR LEASE

2001 15th Ave W,  
Seattle, WA 98119

NOW OPEN



CLUB  PILATES



## INTERBAY URBAN SEATTLE

Justin Holmes | Josh Parnell | Justice Knox

First Western Properties—Tacoma Inc. | 253.472.0404  
6402 Tacoma Mall Blvd, Tacoma, WA 98409 | fwp-inc.com

**INTERBAY URBAN** is a vibrant shopping center located in the heart of Seattle, Washington. Nestled between the lively neighborhoods of Queen Anne and Magnolia, it offers a diverse mix of retail stores, dining options, and essential services. With modern architecture and ample parking, Interbay Urban provides a convenient and enjoyable shopping experience for locals and visitors alike. The center is easily accessible and designed to cater to the dynamic urban lifestyle of Seattle residents.

**AVAILABLE**

**SUITE A2: 3,010 SF      CALL FOR DETAILS**

**SUITE A14: 1,378 SF      CALL FOR DETAILS**

- **Anchored** by Whole Foods and Petco.
- **Conveniently** located minutes from downtown Seattle.
- **Great visibility** from 15th Ave West.
- **Multiple** access points into the center and signalized intersection.
- **Surrounded** by premier neighborhoods; Queen Anne, Magnolia, and Ballard.



Population



Average HH Income



Daytime Population

Regis - 2025

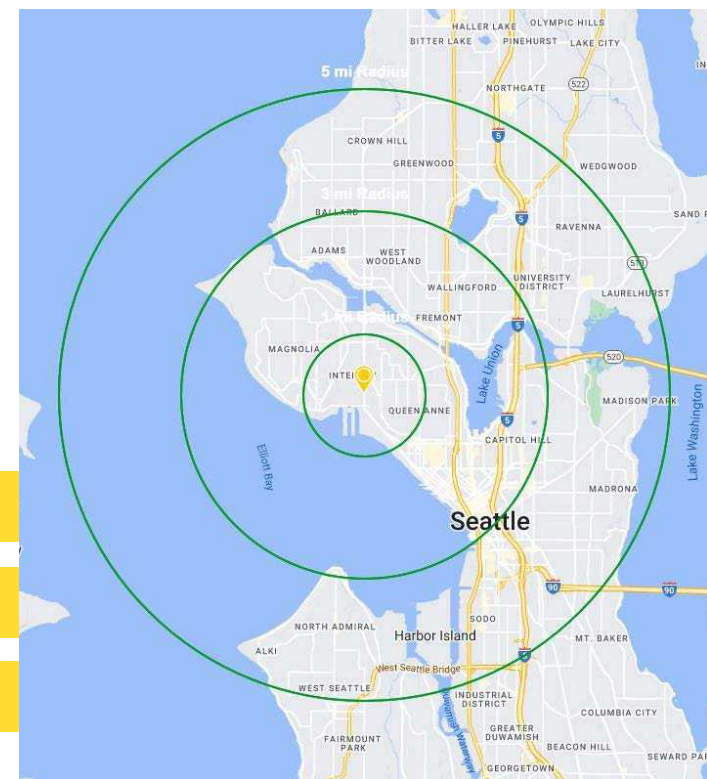
	Population	Average HH Income	Daytime Population
Mile 1	22,098	\$222,160	11,940
Mile 3	227,600	\$193,866	273,753
Mile 5	506,760	\$192,131	488,234

**TENANTS**



**NOW OPEN**

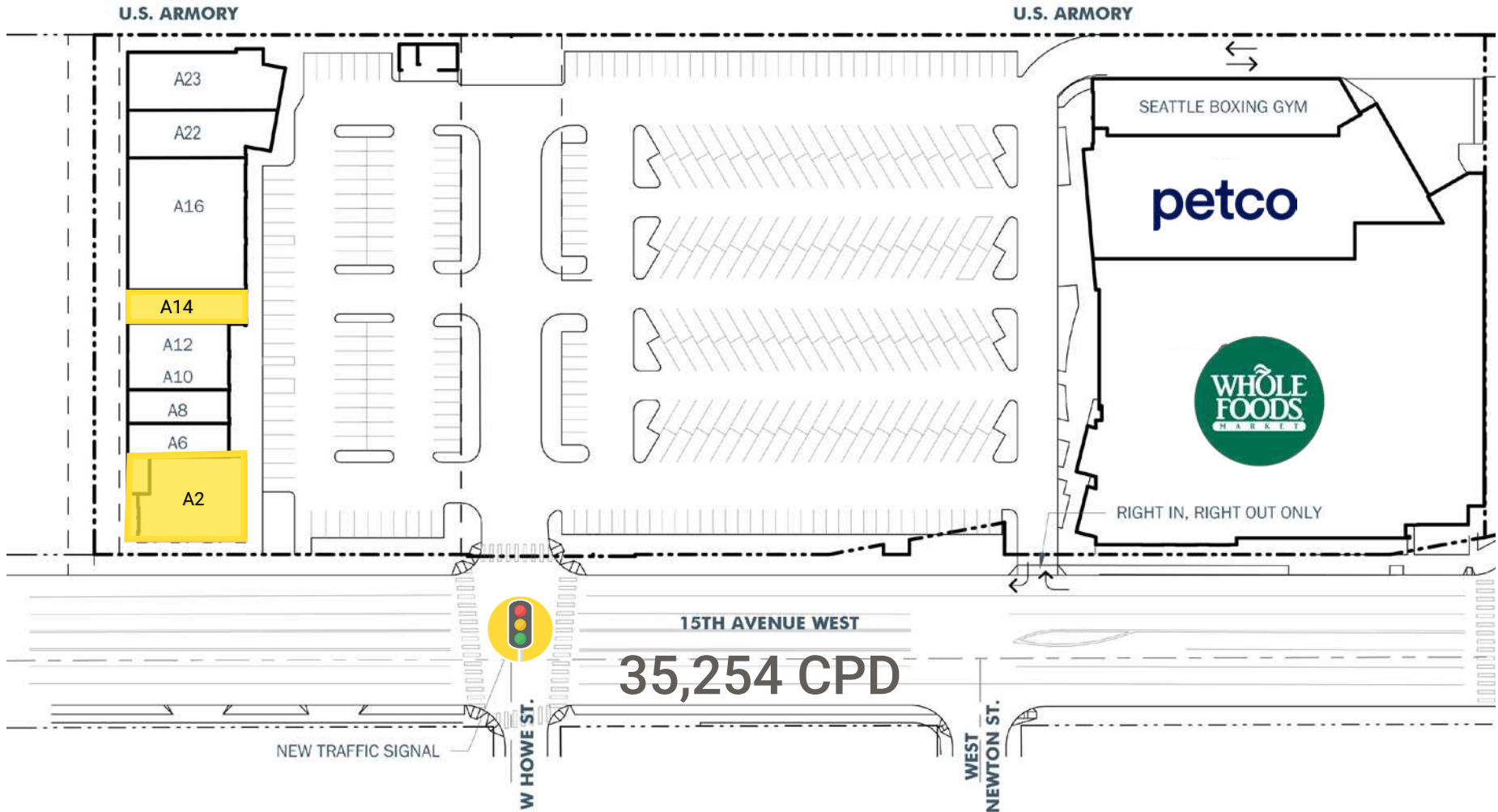
**NOW OPEN**



TOTAL CENTER GLA : 80,560 SF

TOTAL PARKING PROVIDED: 347 STALLS (4.31 STALLS / 1000 SF)

SITE PLAN



Suite	SF	Tenant
Suite A	40,928	Whole Foods Market
Suite B	14,334	Petco
Suite C	5,055	Seattle Boxing Gym
<b>Suite A2</b>	<b>3,010</b>	<b>AVAILABLE</b>
Suite A6	1,208	Verizon Wireless
Suite A8	1,208	AT&T

Suite	SF	Tenant
Suite A10-A12	2,408	Club Pilates
<b>Suite A14</b>	<b>1,378</b>	<b>AVAILABLE</b>
A16-A20	5,600	The Veterinary Emergency Group
A22	2,628	Chipotle
A23	2,814	Panda Express



SUITE A14:  
1,378 SF

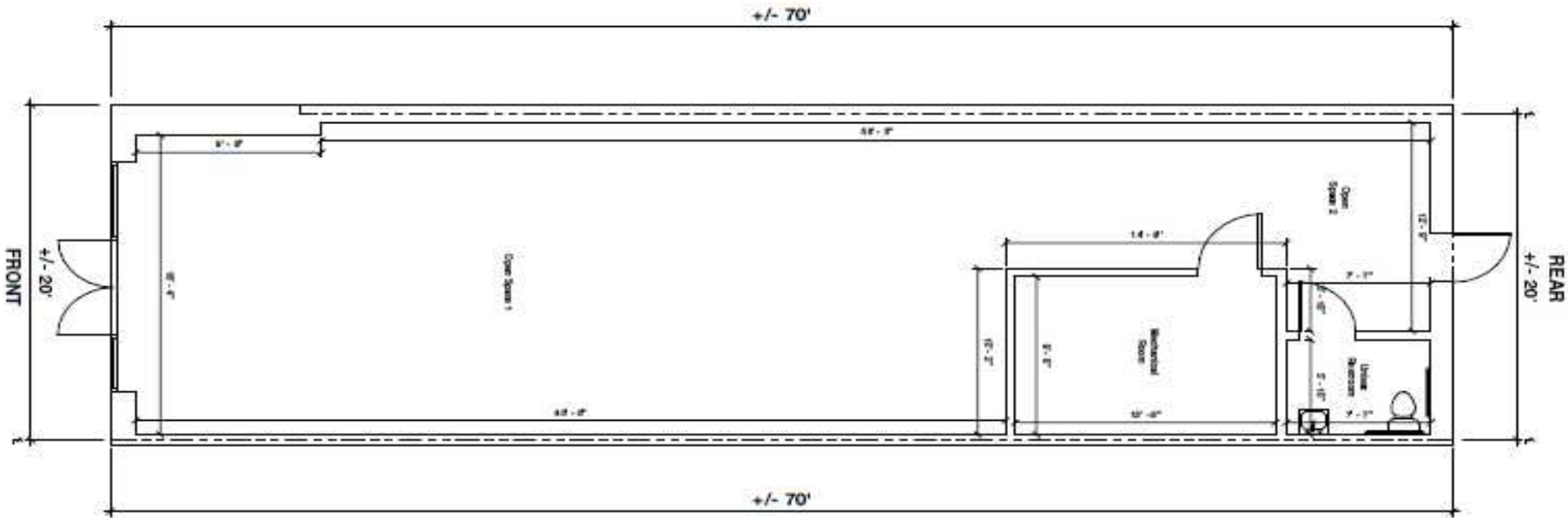


SUITE A2:  
3,010 SF



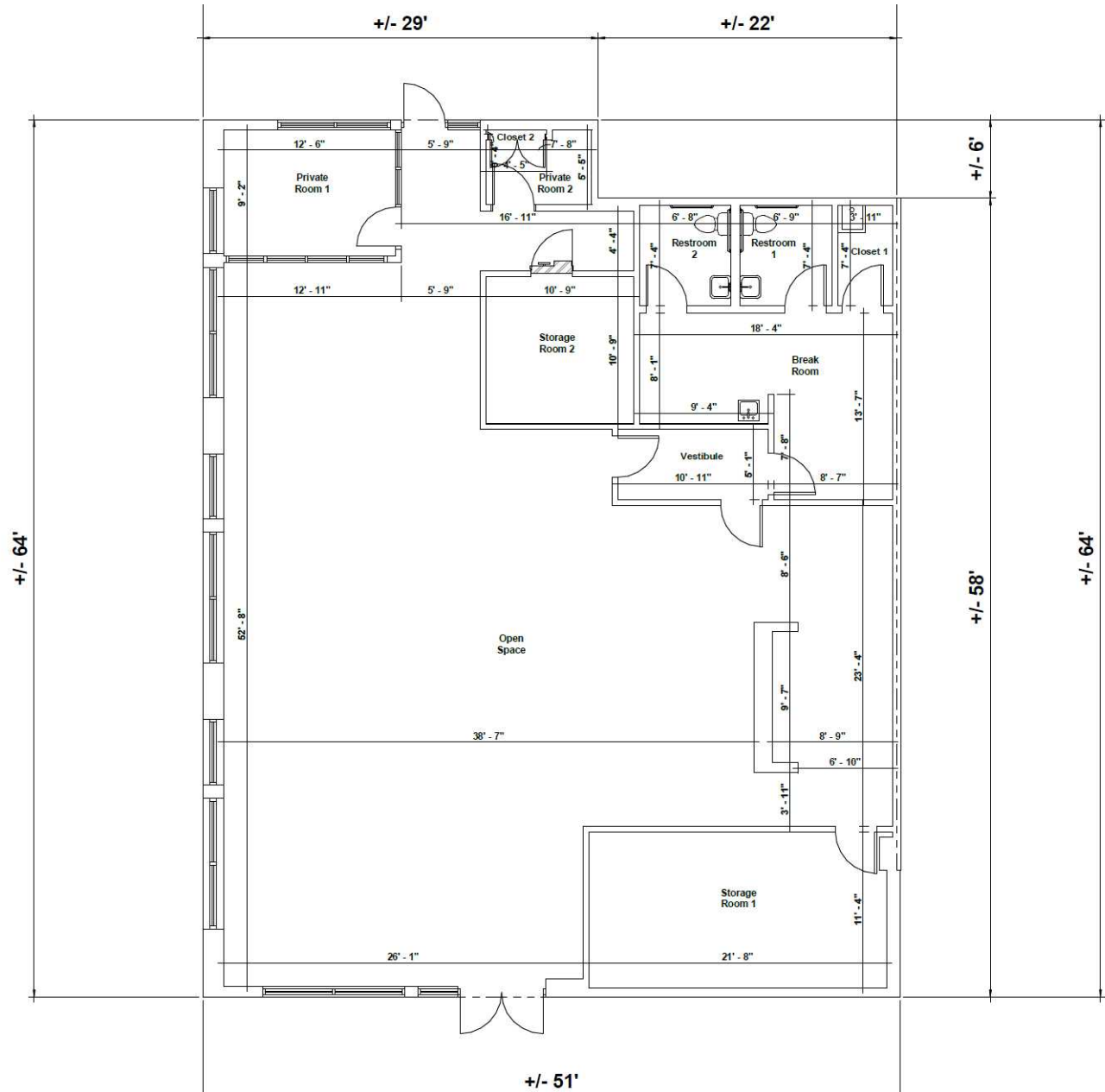
# AVAILABLE: SUITE A14 - 1,378 SF

## FLOOR PLANS



# AVAILABLE: SUITE A2 - 3,010 SF


## FLOOR PLANS




RELATIONSHIP FOCUSED.  
RESULTS DRIVEN.



**JUSTIN HOLMES**

 253.447.2282


 [justin@firstwesternproperties.com](mailto:justin@firstwesternproperties.com)

**JOSH PARNELL**

 253.284.3630

 [josh@firstwesternproperties.com](mailto:josh@firstwesternproperties.com)

**JUSTICE KNOX**

 253.471.5501

 [jknox@firstwesternproperties.com](mailto:jknox@firstwesternproperties.com)

