

S 228TH ST

167

S 224TH ST

83RD AVE S



KENT 228

INDUSTRIAL SPACE FOR LEASE

*12,375 SF to 29,852 SF Available in Kent,
with Easy Access to SR 167*

83RD AVE SOUTH & SOUTH 224TH ST | KENT, WA

CHRIS CORR
Executive Vice President
206.248.7324
chris.corr@kidder.com

MATT MURRAY, SIOR
Executive Vice President
206.248.6541
matt.murray@kidder.com



PROPERTY HIGHLIGHTS

Fantastic exposure and visibility

12,375 to 29,852 SF available

24' clear height

Easy access to SR-167

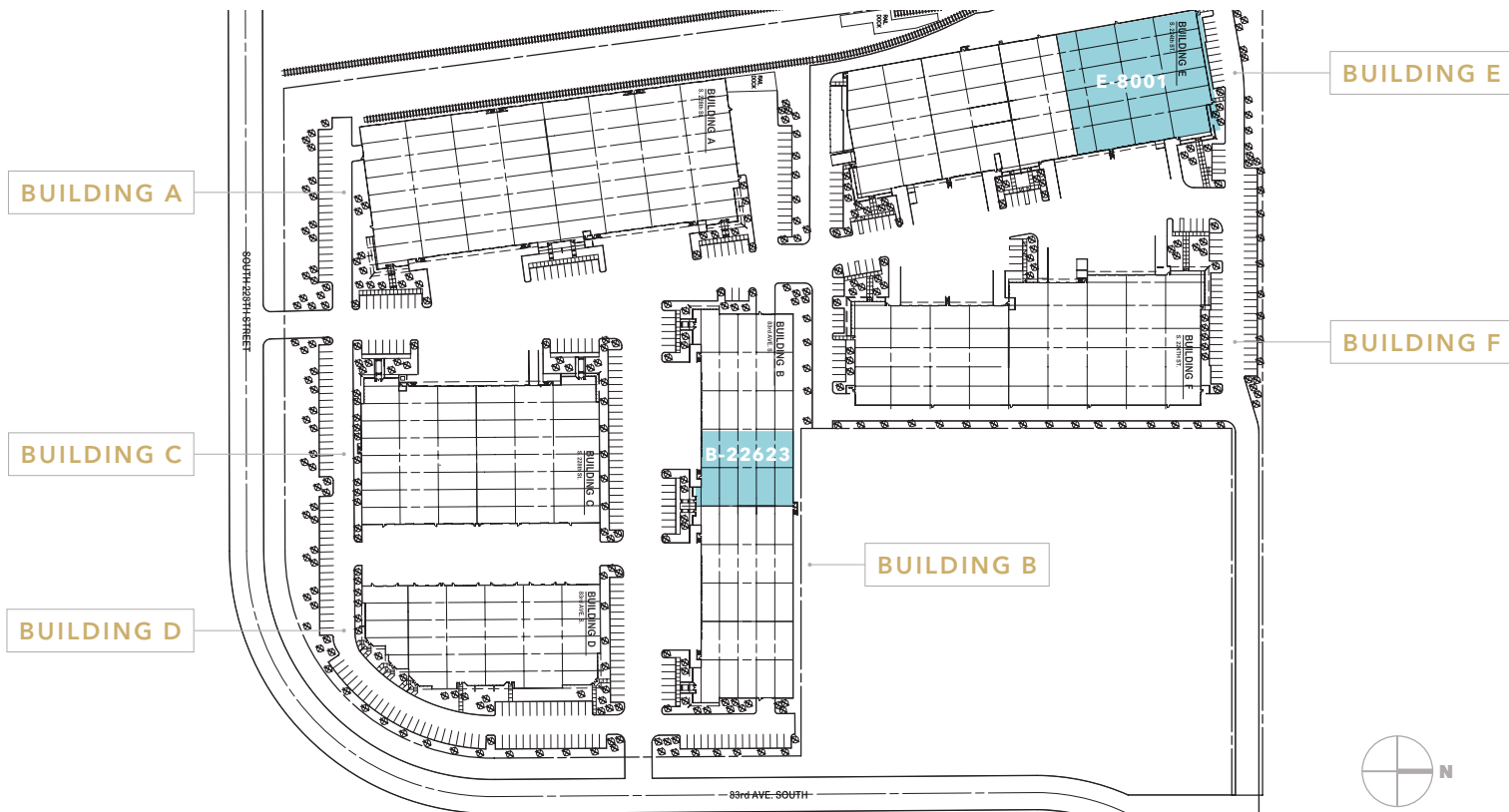
Well maintained premises

Plenty of parking available

M-3 zoning

Contact agents for rates

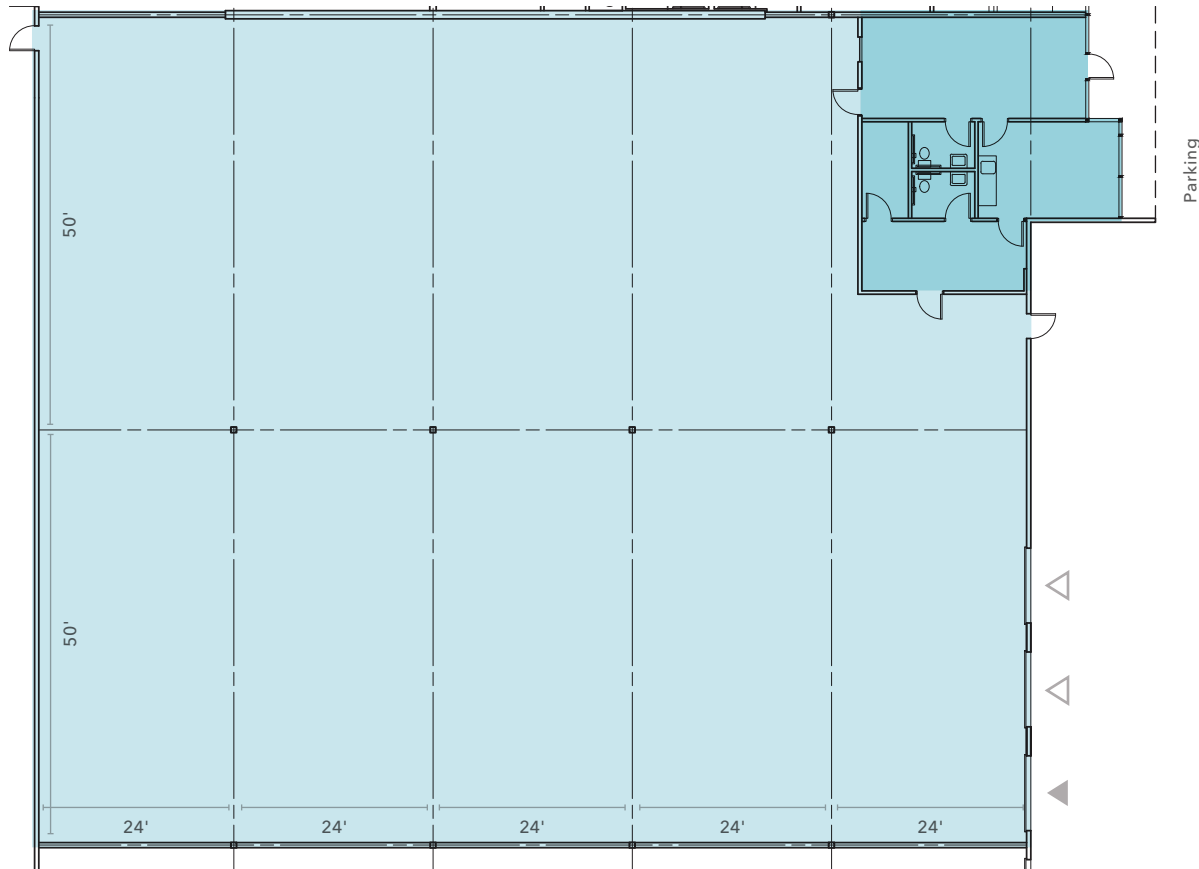




AVAILABILITIES

Suite	Total Area	Office	DH Loading	GL Loading	Power	NNN	Available
B-22623	12,375 SF	926 SF	2	1	125 Amps 277/480 v 3P	\$0.34/SF	Now
E-8001	29,852 SF	1,349 SF	7	2	225 Amps 277/480 v 3P	\$0.34/SF	Now

SUITE B-22623



BUILDING B



12,375 SF

TOTAL AREA

926 SF

OFFICE

NOW

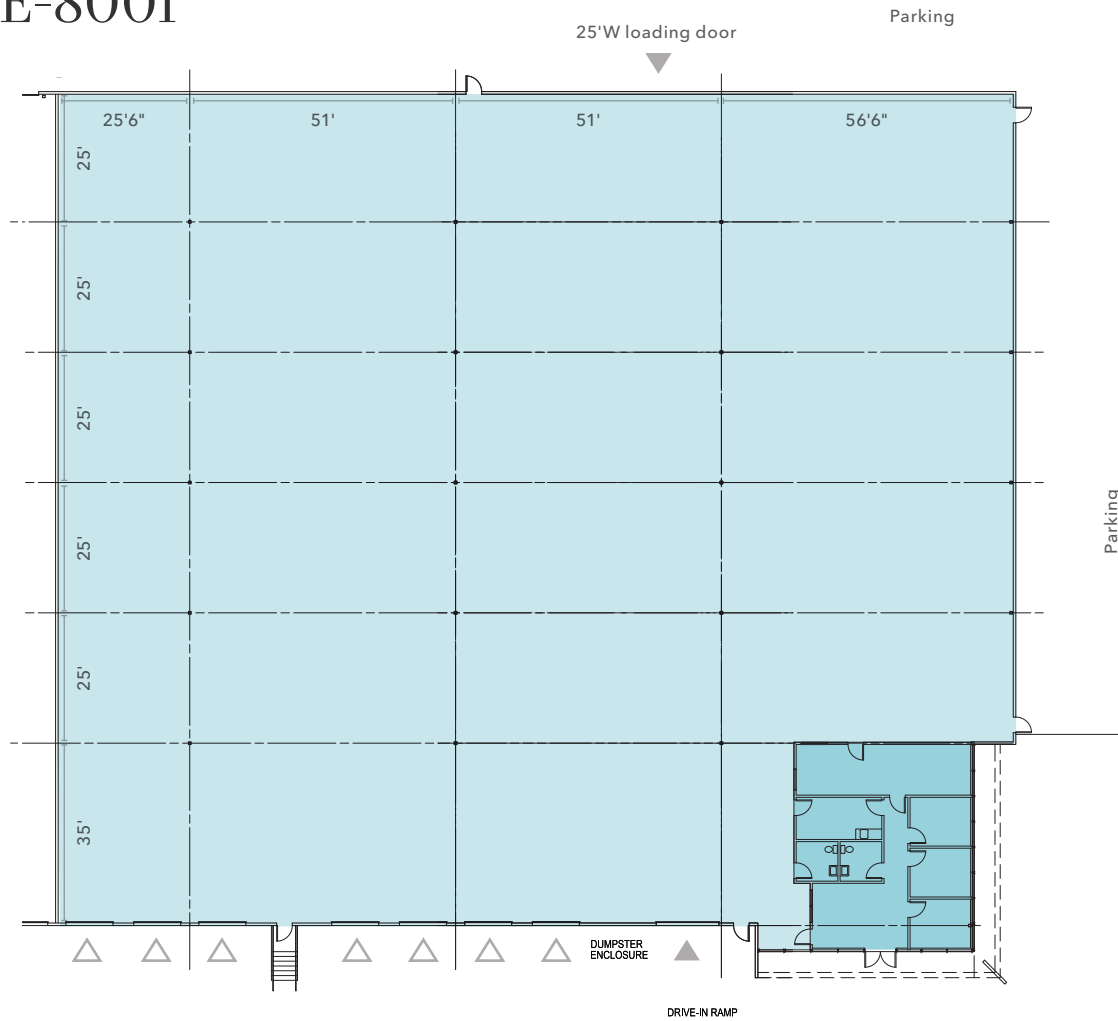
AVAILABLE

LEGEND

- Office
- Warehouse
- Drive-In Loading
- Dock-High Loading



SUITE E-8001



BUILDING E



29,852 SF

TOTAL AREA

1,349 SF

OFFICE

NOW

AVAILABLE

LEGEND

- Office
- Warehouse
- Drive-In Loading
- Dock-High Loading



20 MI

SEATTLE

20.6 MI

TACOMA

10.6 MI

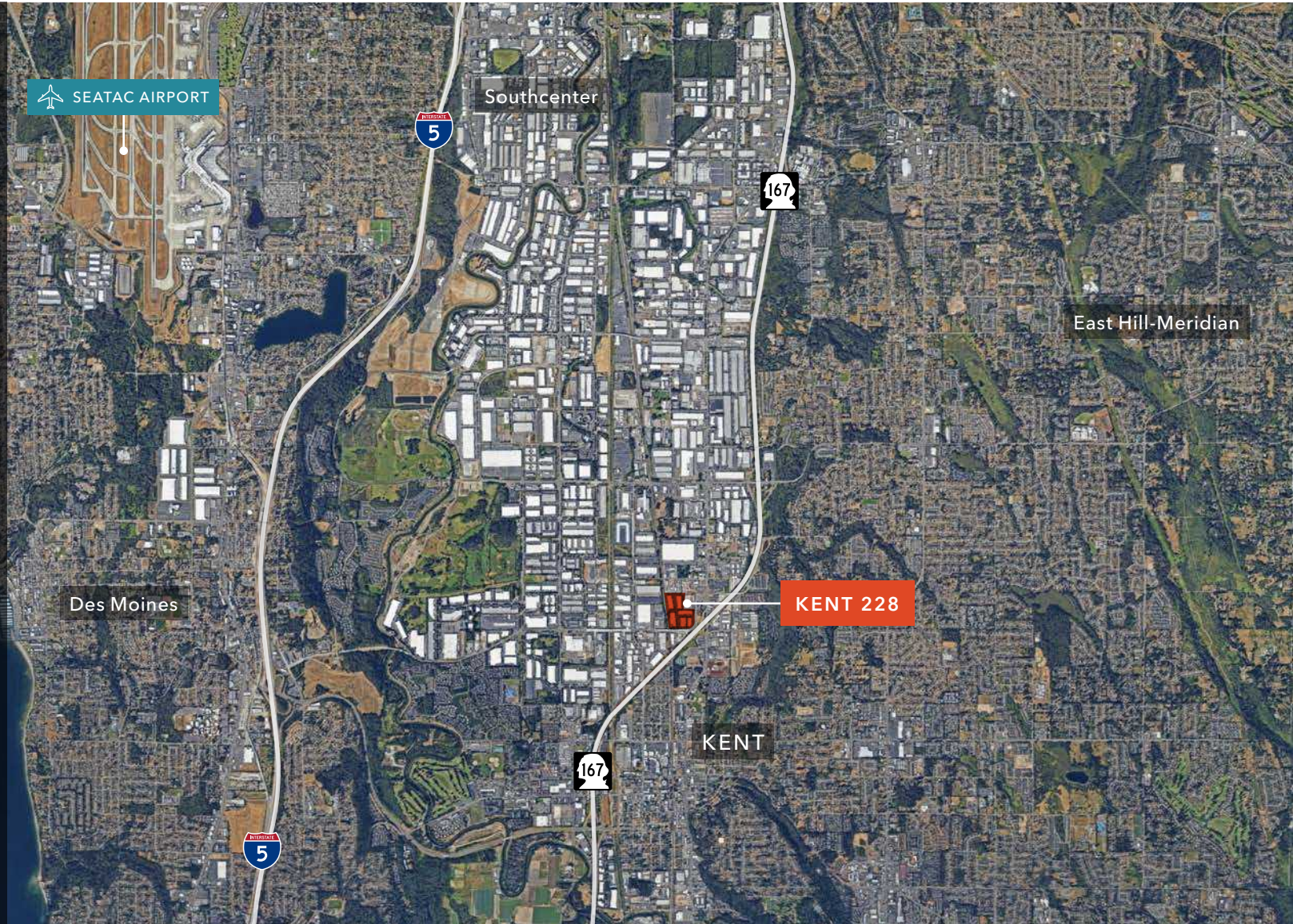
SEATAC

CHRIS CORR

Executive Vice President
206.248.7324
chris.corr@kidder.com

MATT MURRAY, SIOR

Executive Vice President
206.248.6541
matt.murray@kidder.com



KIDDER.COM

This information supplied herein is from sources we deem reliable. It is provided without any representation, warranty, or guarantee, expressed or implied as to its accuracy. Prospective Buyer or Tenant should conduct an independent investigation and verification of all matters deemed to be material, including, but not limited to, statements of income and expenses. Consult your attorney, accountant, or other professional advisor. All Kidder Mathews designs are the sole property of Kidder Mathews. Branded materials and layouts are not authorized for use by any other firm or person.