

BELLEVUE, WASHINGTON

# EVERGREEN CENTER

1824 130TH AVENUE NE | BELLEVUE, WA 98005



## AVAILABLE SPACE

SUITE **1824 #1**

**2,435** RSF

OPEN OFFICE / SHOW ROOM IN FRONT WITH WAREHOUSE IN BACK

AVAILABLE **NOW**

## PROPERTY FEATURES

Close-in proximity, exceptional parking

Walking Distance to Light Rail

Rare office | warehouse space

Van High loading dock

Local ownership and professional management

Business park setting

BELLEVUE, WASHINGTON

# EVERGREEN CENTER

1824 130TH AVENUE NE | BELLEVUE, WA 98005

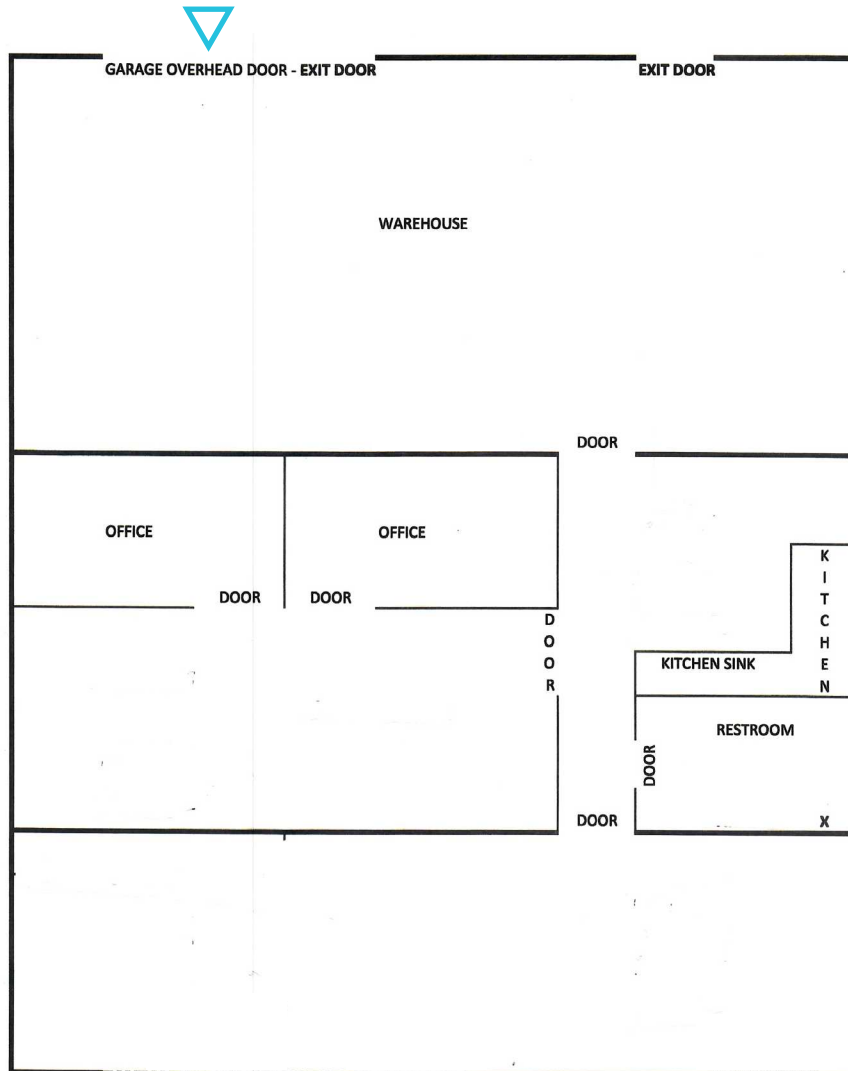
**SUITE**  
**1854 #1**

2,435 RSF

\$27.00/SF/Yr, \$12.20/SF/Yr  
in NNN's

4/1000 Parking

Available Now



 Van-high loading

BELLEVUE, WASHINGTON

# EVERGREEN CENTER

1824 130TH AVENUE NE | BELLEVUE, WA 98005

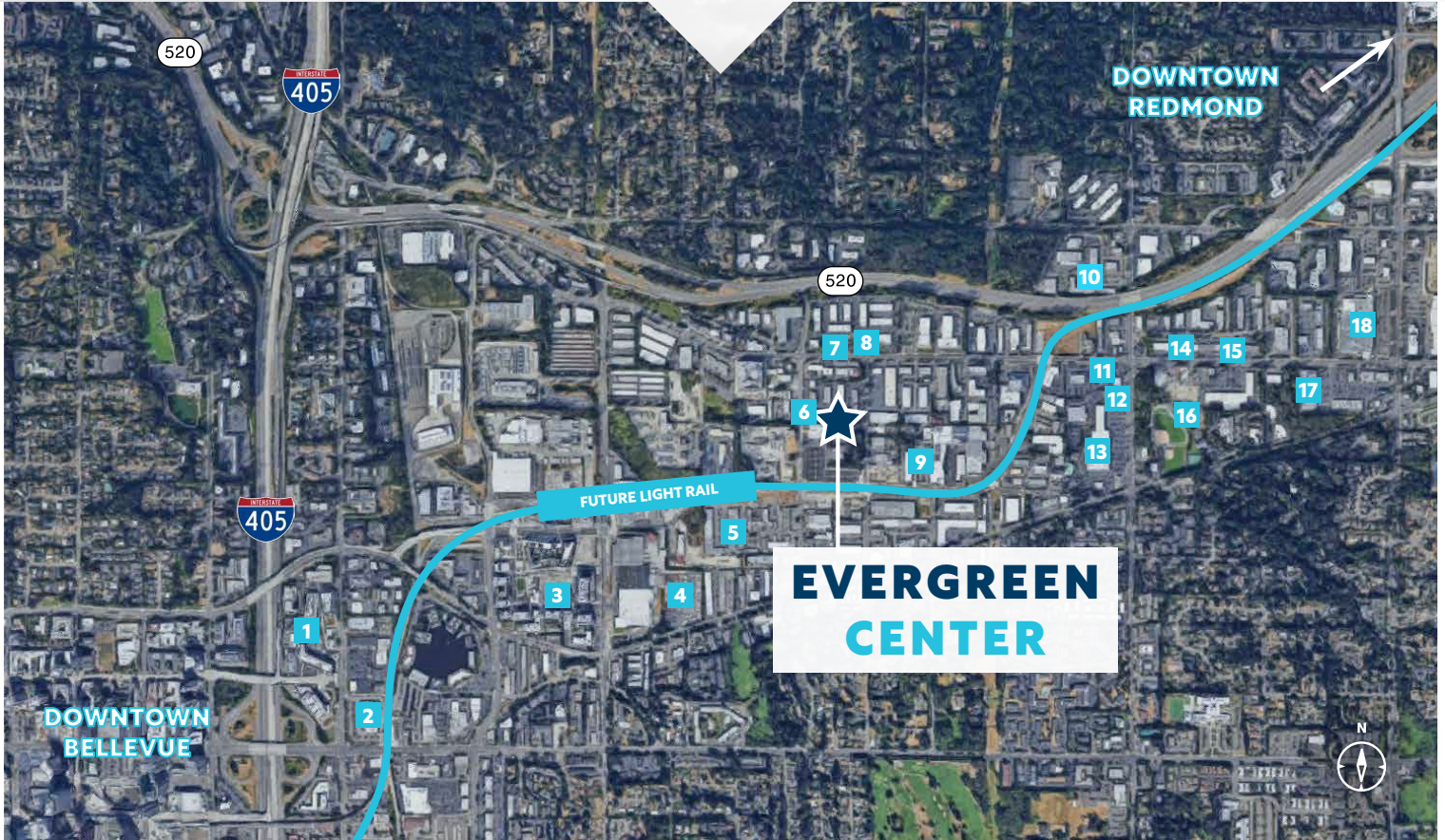
## SITE PLAN



BELLEVUE, WASHINGTON

# EVERGREEN CENTER

1824 130TH AVENUE NE | BELLEVUE, WA 98005



## NEARBY AMENITIES

1. Overlake Medical Center
2. Whole Foods
3. Bellevue Brewing Company
4. Facing East Taiwanese
5. Teriyaki Express
6. Cascadian Pizza
7. Mercurys Coffee Co
8. Royal Kitchen Chinese
9. CrossFit 425
10. Amore Coffee
11. Flying Fish
12. Safeway
13. Ezells Famous Chicken
14. Dickey's Barbecue Pit
15. Steve's Bar & Grill
16. Bellevue Family YMCA
17. Asian Family Market Bellevue
18. Fred Meyer

**5 MINUTES**

TO DOWNTOWN BELLEVUE

**10 MINUTES**

TO DOWNTOWN REDMOND

BELLEVUE, WASHINGTON

# EVERGREEN CENTER

1824 130TH AVENUE NE | BELLEVUE, WA 98005

## PROJECT FACT SHEET

### TOTAL PROJECT SIZE:

Approximately 72,000 RSF

### AVAILABLE SPACE:

Suite 1824 #1 2,435 RSF

### RENTAL RATE:

\$27.00/SF/Yr, NNN

### OPERATING EXPENSES:

\$12.20/SF/Yr

### PARKING:

4.0/1,000 SF

### OWNERSHIP AND MANAGEMENT:

MRM Capital and InCity Properties

