

FOR LEASE

# CROSSROADS OFFICE PARK

*Office Spaces Available for Lease  
in Bellevue, WA*

15821-15831 NE 8TH ST,  
BELLEVUE, WA 98008



KIDDER.COM

**km** Kidder  
Mathews

# CROSSROADS OFFICE PARK



*42,711 Total SF of Office Space  
Between Two Buildings with  
High Visibility in Bellevue, WA*

Flexible demising options for West Bldg

Short-term leases

Responsive management team

Furniture available

Ample parking

\$15/SF lease rate, NNN

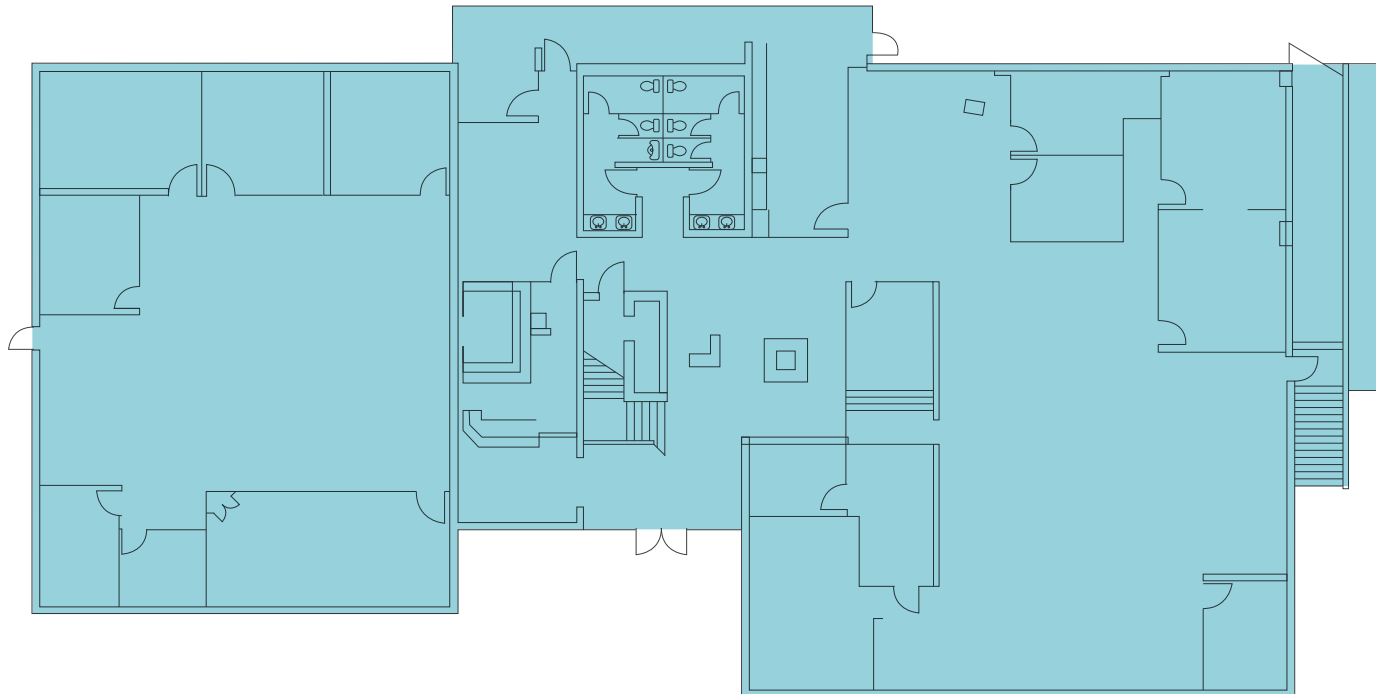
*20,970 SF*

EAST BLDG TOTAL SIZE

*21,741 SF*

WEST BLDG TOTAL SIZE  
(DEMISABLE)

# EAST BLDG - FIRST FLOOR PLAN



*20,970 SF*

TOTAL BLDG

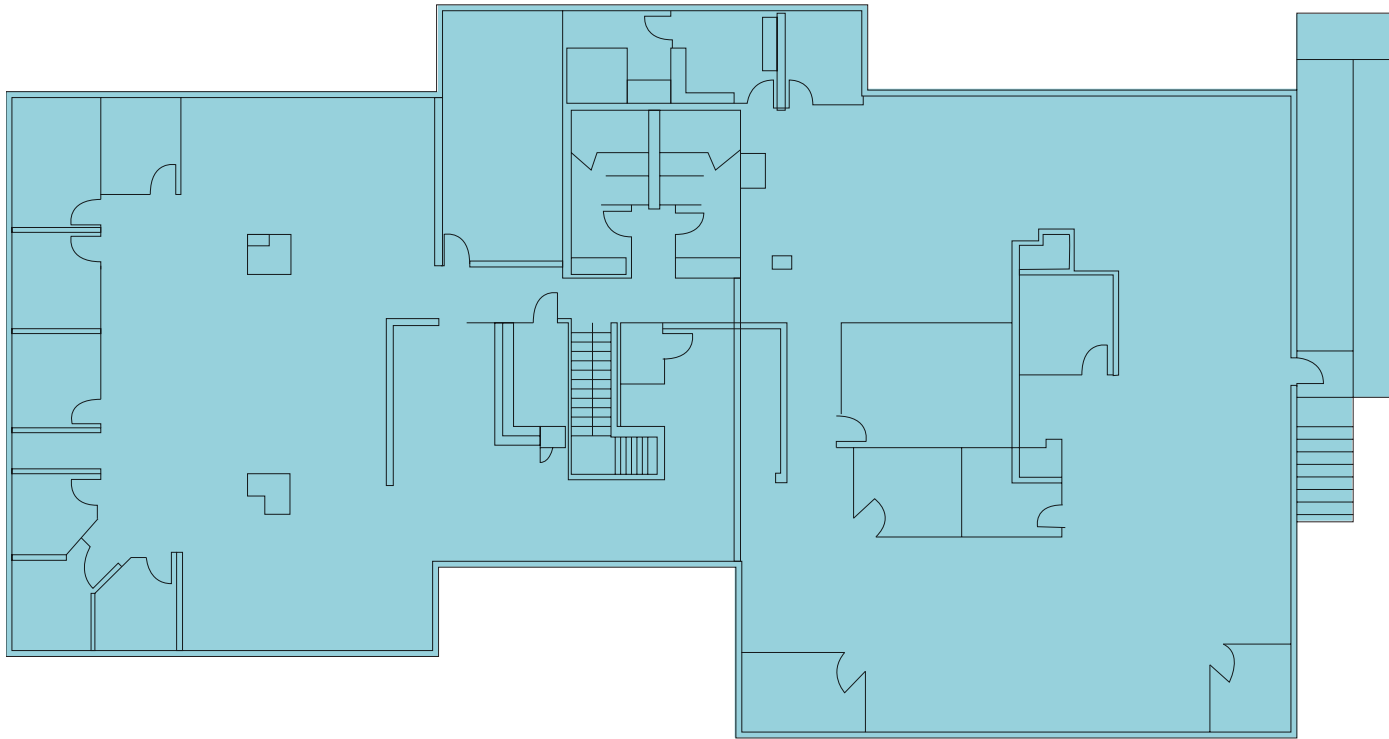
*10,485 SF*

FIRST FLOOR

*\$15.00/SF*

LEASE RATE, NNN

## EAST BLDG - SECOND FLOOR PLAN



---

*20,970 SF*

TOTAL BLDG

---

*10,485 SF*

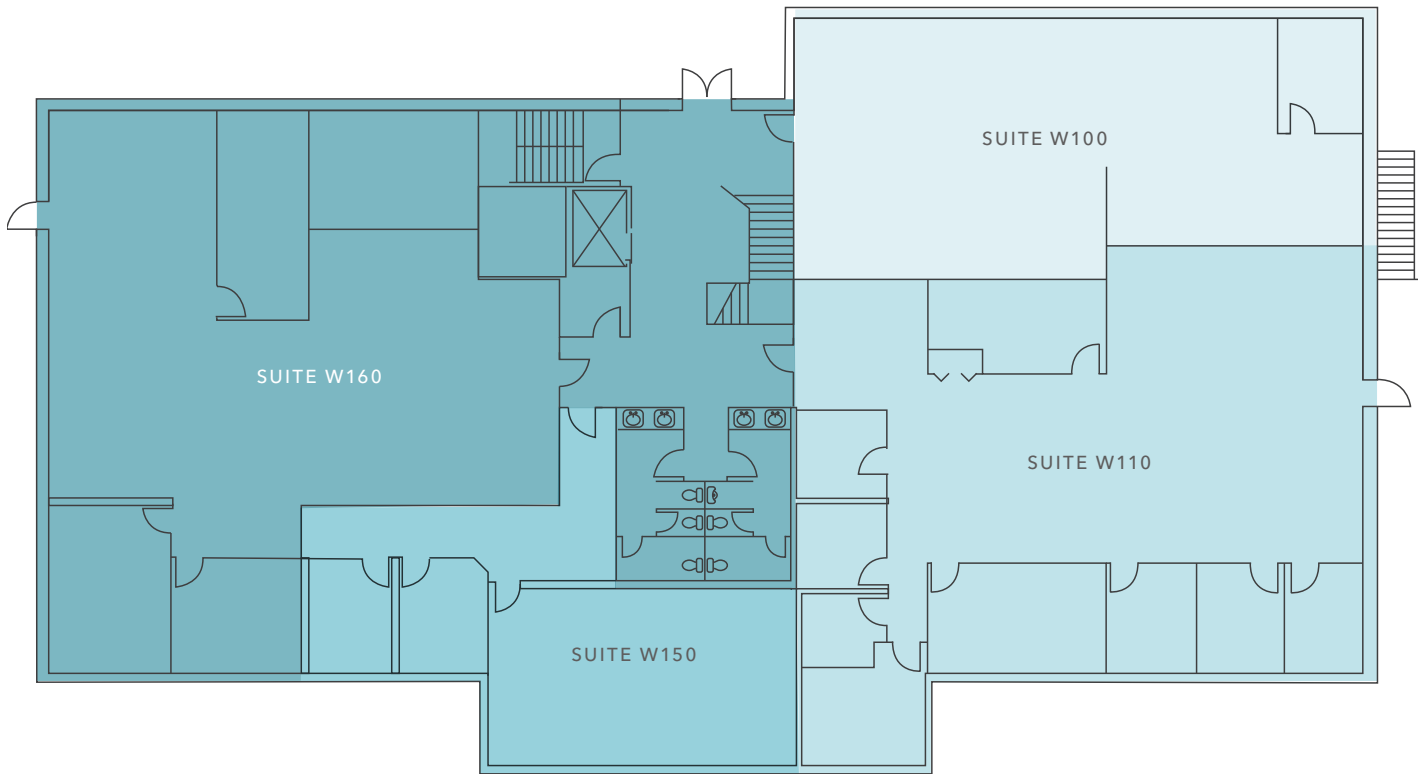
SECOND FLOOR

---

*\$15.00/SF*

LEASE RATE, NNN

# WEST BLDG - FIRST FLOOR PLAN



*21,741 SF*

TOTAL BLDG

*2,100 SF*

SUITE W100

*3,352 SF*

SUITE W110

*1,459 SF*

SUITE W150

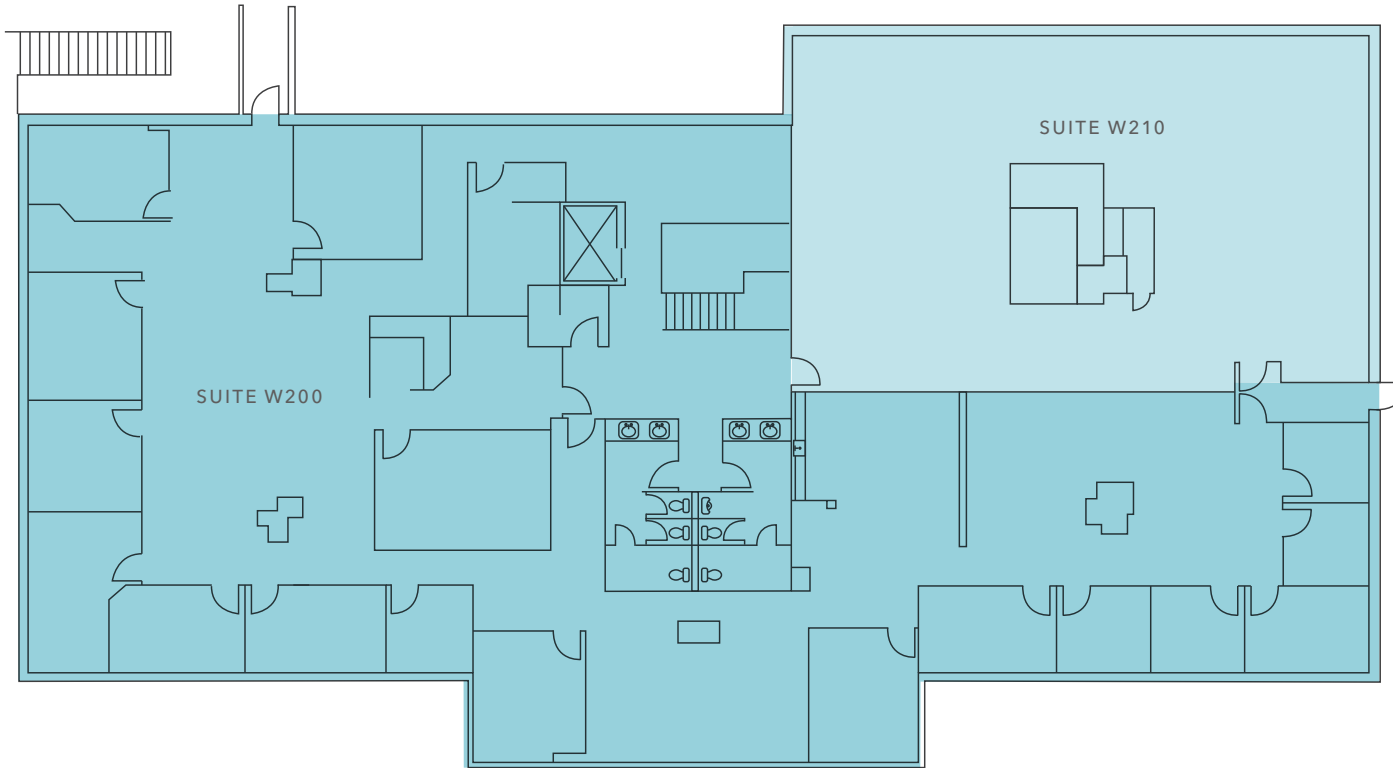
*3,689 SF*

SUITE W160

*\$15.00/SF*

LEASE RATE, NNN

# WEST BLDG - SECOND FLOOR PLAN



*21,741 SF*

TOTAL BLDG

*7,690 SF*

SUITE W210

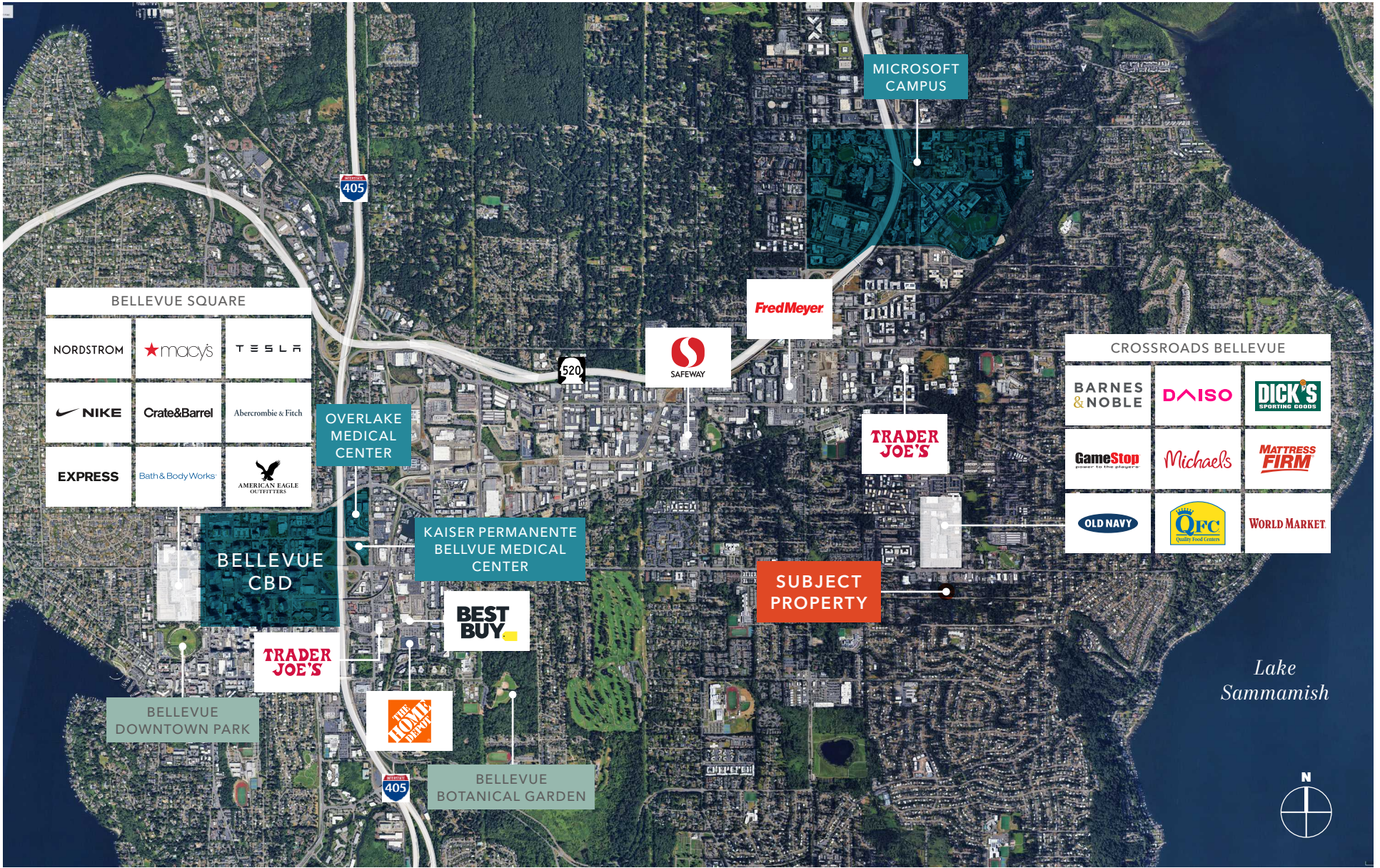
*3,442 SF*

SUITE W200

*\$15.00/SF*

LEASE RATE, NNN

# CROSSROADS OFFICE PARK



# CROSSROADS OFFICE PARK

*Exclusively listed by*

**CHARLES CAPLICE**

425.450.1160

[charles.caplice@kidder.com](mailto:charles.caplice@kidder.com)

**GARY GUENTHER**

425.450.1154

[gary.guenther@kidder.com](mailto:gary.guenther@kidder.com)

[KIDDER.COM](http://KIDDER.COM)

This information supplied herein is from sources we deem reliable. It is provided without any representation, warranty, or guarantee, expressed or implied as to its accuracy. Prospective Buyer or Tenant should conduct an independent investigation and verification of all matters deemed to be material, including, but not limited to, statements of income and expenses. Consult your attorney, accountant, or other professional advisor. All Kidder Mathews designs are the sole property of Kidder Mathews. Branded materials and layouts are not authorized for use by any other firm or person.

