

# SANDBERG ON THE AVE

1423 Pacific Ave  
Tacoma, WA



## FOR LEASE - \$24/SF + NNN

## Ground Floor Retail Opportunity at New Multi-Family Redevelopment

**SANDBERG ON THE AVE** reimagines the historic 1907 Sandberg Building - once home to Schoenfeld's Furniture and, more recently, Davita - into a modern, amenity-rich residential community featuring 75 apartment homes ranging from 800 to 1,350 SF with onsite parking, ground-floor retail, fitness center and rooftop amenity space. There is a total of ±5,636 SF available in the Annex Building and ±5,331 SF available in the Tower Building.

This highly anticipated transformation of one of Tacoma's most iconic buildings is scheduled for completion around April, 2026.



**LEE & ASSOCIATES**  
COMMERCIAL REAL ESTATE SERVICES

All information furnished regarding property for sale, rental or financing is from sources deemed reliable, but no warranty or representation is made to the accuracy thereof and same is submitted to errors, omissions, change of price, rental or other conditions prior to sale, lease or financing or withdrawal without notice. No liability of any kind is to be imposed on the broker herein.

# SANDBERG ON THE AVE

1423 Pacific Ave  
Tacoma, WA

## LOCATION HIGHLIGHTS

At the corner of the two I-705 exits into downtown Tacoma, and adjacent to the Tacoma Super Block development site, the building has adjacent parking, and highway entrance access just around the corner off of A Street, leading to both directions on I-5. Extensive transportation improvements help provide the perfect confluence for this major market hub.



**KYLE PROSSER**

kprosser@lee-associates.com  
D 253.444.3025

**JOHN BAUDER**

jbauder@lee-associates.com  
D 253.238.0043

**HARRISON LAIRD**

hlaird@lee-associates.com  
D 253.238.0044

**LEE & ASSOCIATES**  
COMMERCIAL REAL ESTATE SERVICES

# SANDBERG ON THE AVE

1423 Pacific Ave  
Tacoma, WA

## MARKET HIGHLIGHTS

The mix of residential, nearby offices, museums, transit, dining, shopping, university, and cultural institutions create an ideal destination environment, generating strong foot traffic and fostering a strong synergy for retail tenants.



**Drive** Directly adjacent to the I-705 entrance and 2 exits, and within 1/4 mile of bi-directional access to and from I-5.



**Ride:** 1-block from the Convention Center Light Rail Station; access from Sounder Light Rail via Tacoma Link Light Rail



**Walk:** WalkScore of 91. Nearby trails include the Prairie Line Trail into Tacoma's Brewery District, and the Thea Foss Esplanade along the Waterway.

### KYLE PROSSER

kprosser@lee-associates.com  
D 253.444.3025

### JOHN BAUDER

jbauder@lee-associates.com  
D 253.238.0043

### HARRISON LAIRD

hlaird@lee-associates.com  
D 253.238.0044

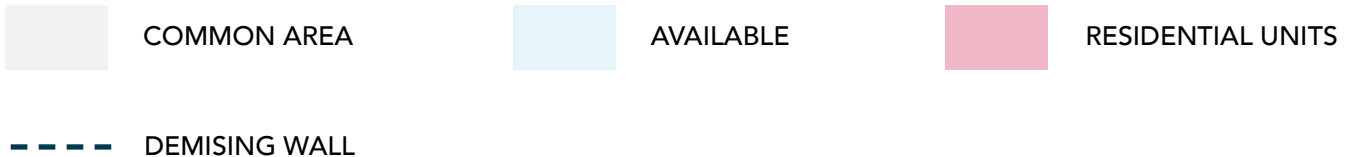
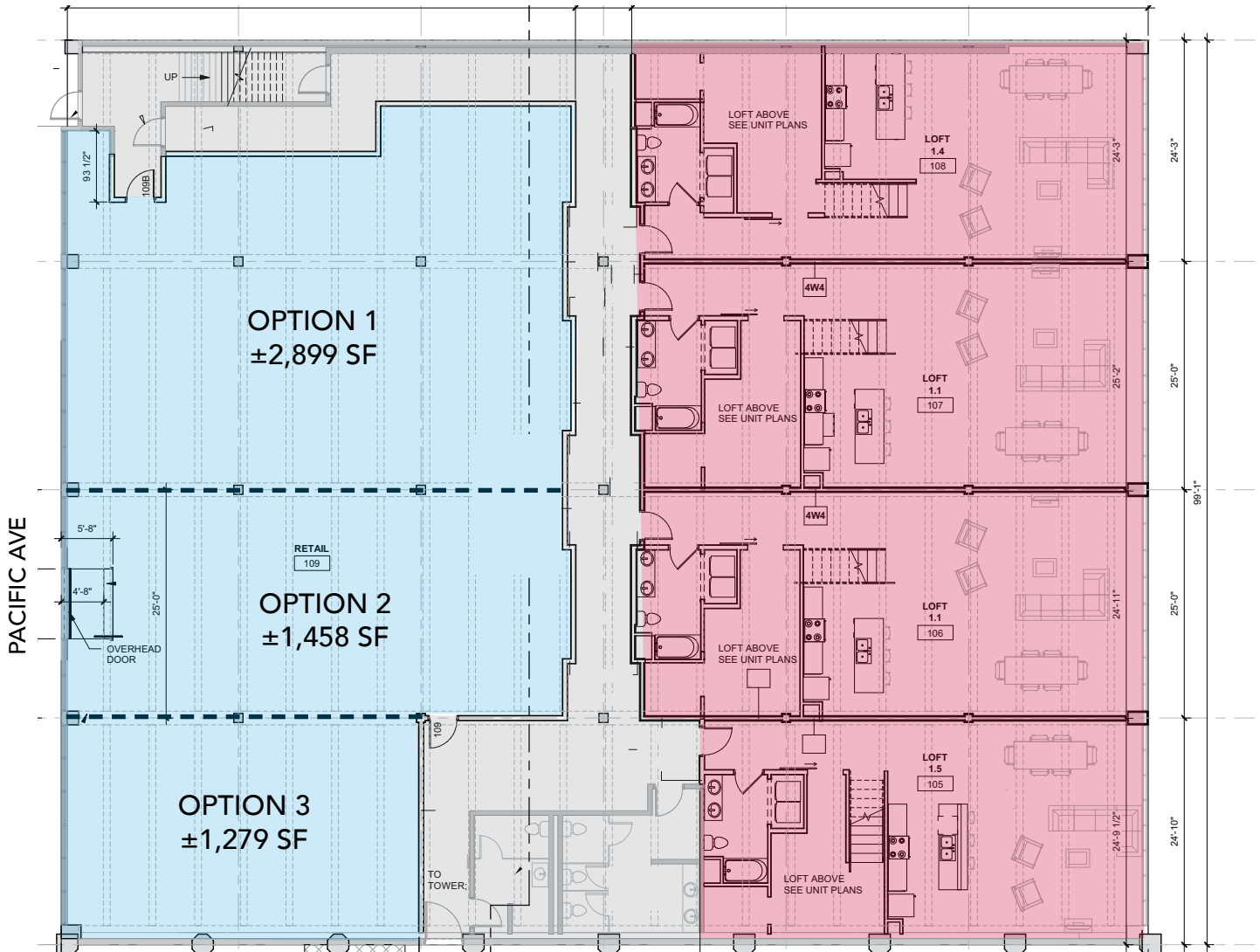


# SANDBERG ON THE AVE

1423 Pacific Ave  
Tacoma, WA

## RETAIL FLOOR PLAN - ANNEX

- ±5,636 SF available in the Annex Building
- Can be demised to ±1,279 SF - 5,636
- We have ability for a vent shaft for a restaurant as well



**KYLE PROSSER**  
kprosser@lee-associates.com  
D 253.444.3025

**JOHN BAUDER**  
jbauder@lee-associates.com  
D 253.238.0043

**HARRISON LAIRD**  
hlaird@lee-associates.com  
D 253.238.0044

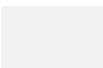
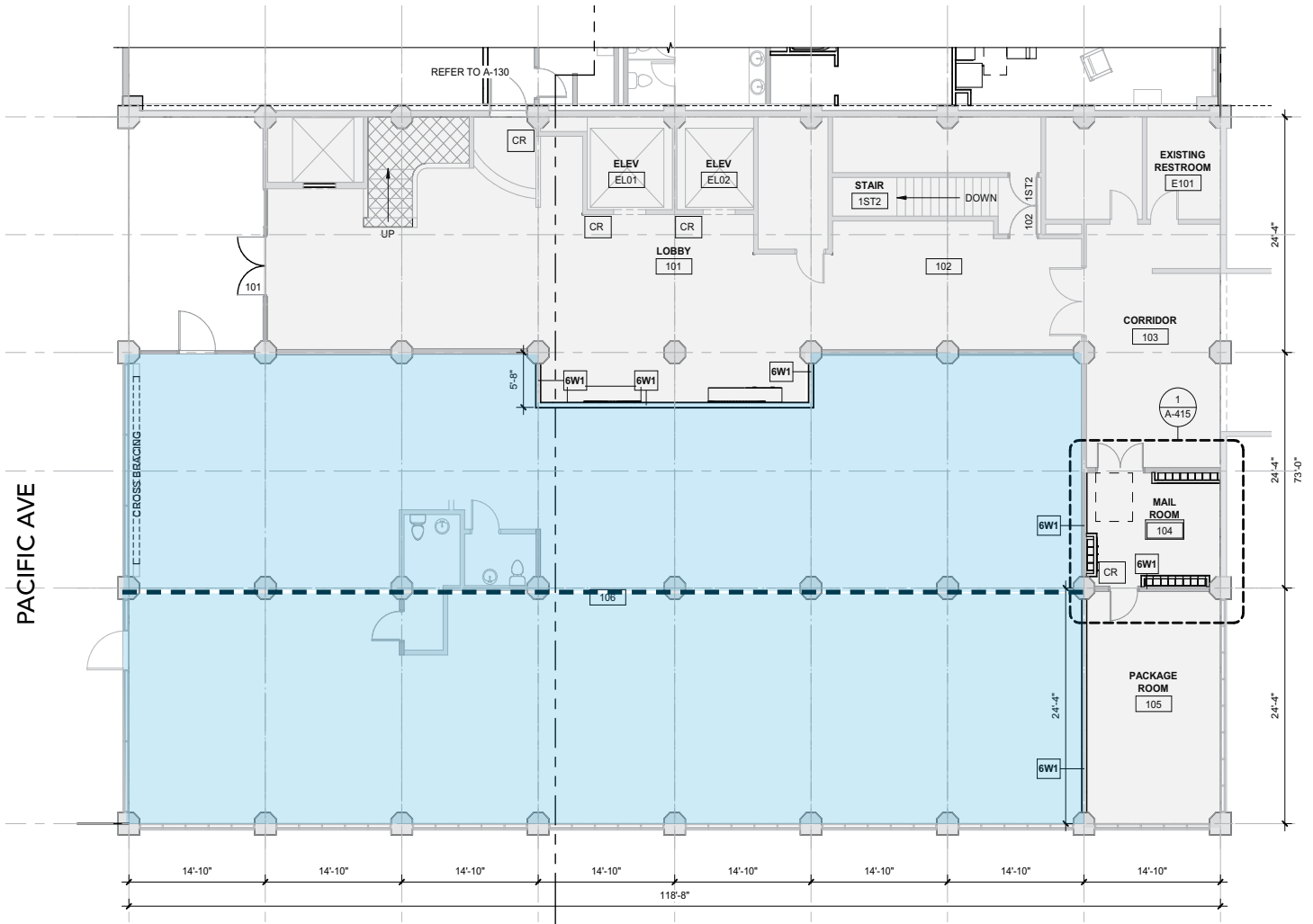
**LEE & ASSOCIATES**  
COMMERCIAL REAL ESTATE SERVICES

# SANDBERG ON THE AVE

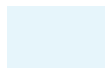
1423 Pacific Ave  
Tacoma, WA

## RETAIL FLOOR PLAN - TOWER

- ±5,331 SF available in the Tower Building
- Can be demised to ±2,600 SF
- Existing coffee/sandwich/restaurant build-out



COMMON AREA



AVAILABLE



DEMISING WALL

### KYLE PROSSER

kprosser@lee-associates.com  
D 253.444.3025

### JOHN BAUDER

jbauder@lee-associates.com  
D 253.238.0043

### HARRISON LAIRD

hlaird@lee-associates.com  
D 253.238.0044

