

BERES TOTEM LAKE PROPERTY



AVAILABLE FOR SALE OR LEASE

*Warehouse, Office and Yard on 26,136 SF Lot
with Incredible Frontage to 124th Street*

13131 NE 124TH ST | KIRKLAND, WA

5,669 SF

BUILDING 1

1,500 SF

BUILDING 2



PROPERTY HIGHLIGHTS

26,136 SF (0.60 acres) available with frontage to NE 124th St

Building 1: 5,669 SF total
2,160 SF office + 3,509 SF clear-span warehouse,
3 oversized grade-level doors

Building 2: 1,500 SF total
300 SF office + 1,200 SF warehouse,
14' clear height, grade-level loading

TL 6A Zoning

Contact Brokers for lease rates and sale price

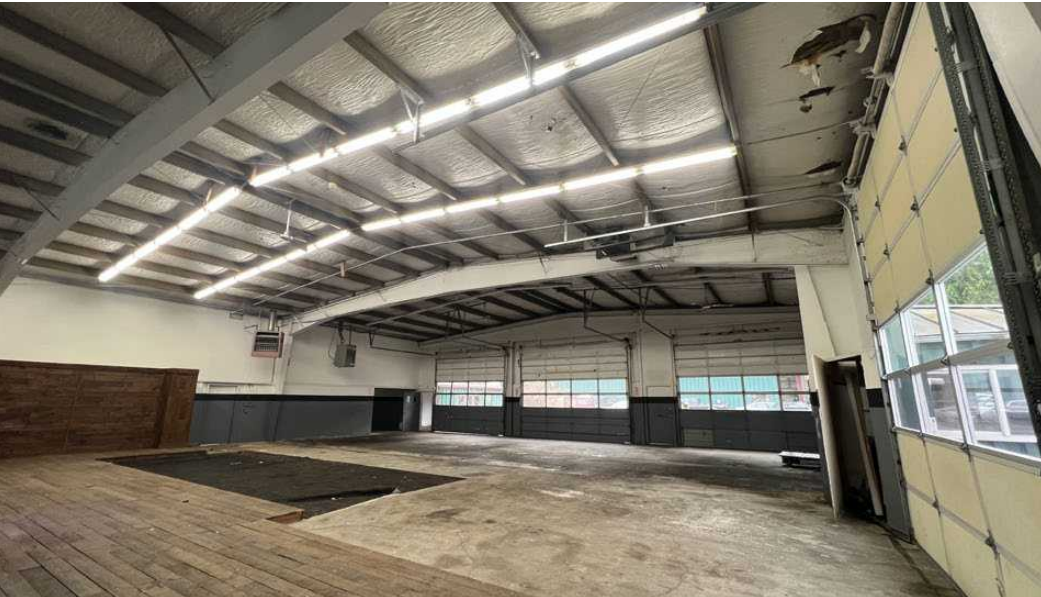
5,669 SF

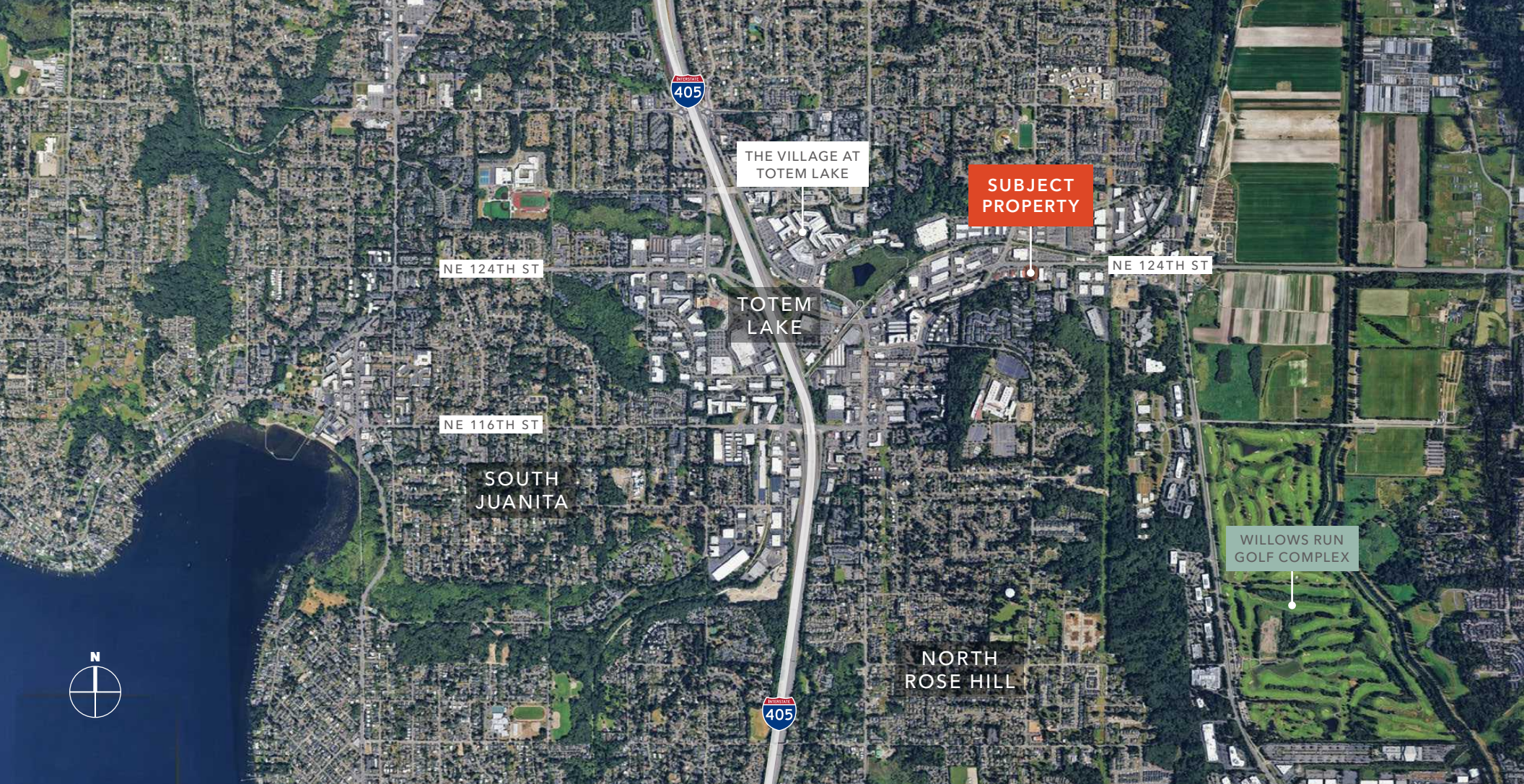
BUILDING 1

1,500 SF

BUILDING 2

BERES TOTEM LAKE PROPERTY





BERES TOTEM LAKE PROPERTY

For more information about this property, please contact

TODD GAUTHIER
Executive Vice President
425.450.1118
todd.gauthier@kidder.com

JASON BLOOM
Executive Vice President
425.450.1102
jason.bloom@kidder.com

KIDDER.COM

This information supplied herein is from sources we deem reliable. It is provided without any representation, warranty, or guarantee, expressed or implied as to its accuracy. Prospective Buyer or Tenant should conduct an independent investigation and verification of all matters deemed to be material, including, but not limited to, statements of income and expenses. Consult your attorney, accountant, or other professional advisor.

