

1633

WESTLAKE



1633

WESTLAKE



PROPERTY OVERVIEW



Lake Union Loop
/ Burke Gilman
Bike Trails



Easy access to
MOHAI Park &
Kenmore Air
Terminal



Easy I-5,
HWY 99 &
SLU access



Access for sailing,
boating, kayaking
and paddle
boards



Marriott Hotel
and multiple
apartment/
condos



200+
parking
spots



Building
Showers &
Locker Room







Under
Construction:
Building
Conference &
Bike Parking

1633 | WESTLAKE



AVAILABILITIES

TOUR	FLOOR	SUITE	RSF	AVAILABILITY
	1	100	8,255 RSF	NOW
	1	110	4,365 RSF	NOW
	1	140	3,012 RSF	NOW
	2	200	25,754 RSF	NOW
	PENTHOUSE	400	22,323 RSF	NOW



The information contained herein has been given to us by the owner or sources which we deem reliable. We have no reason to doubt its accuracy, but we do not guarantee it. Prospective tenants should carefully verify all information contained herein.

BRODERICK
• GROUP •

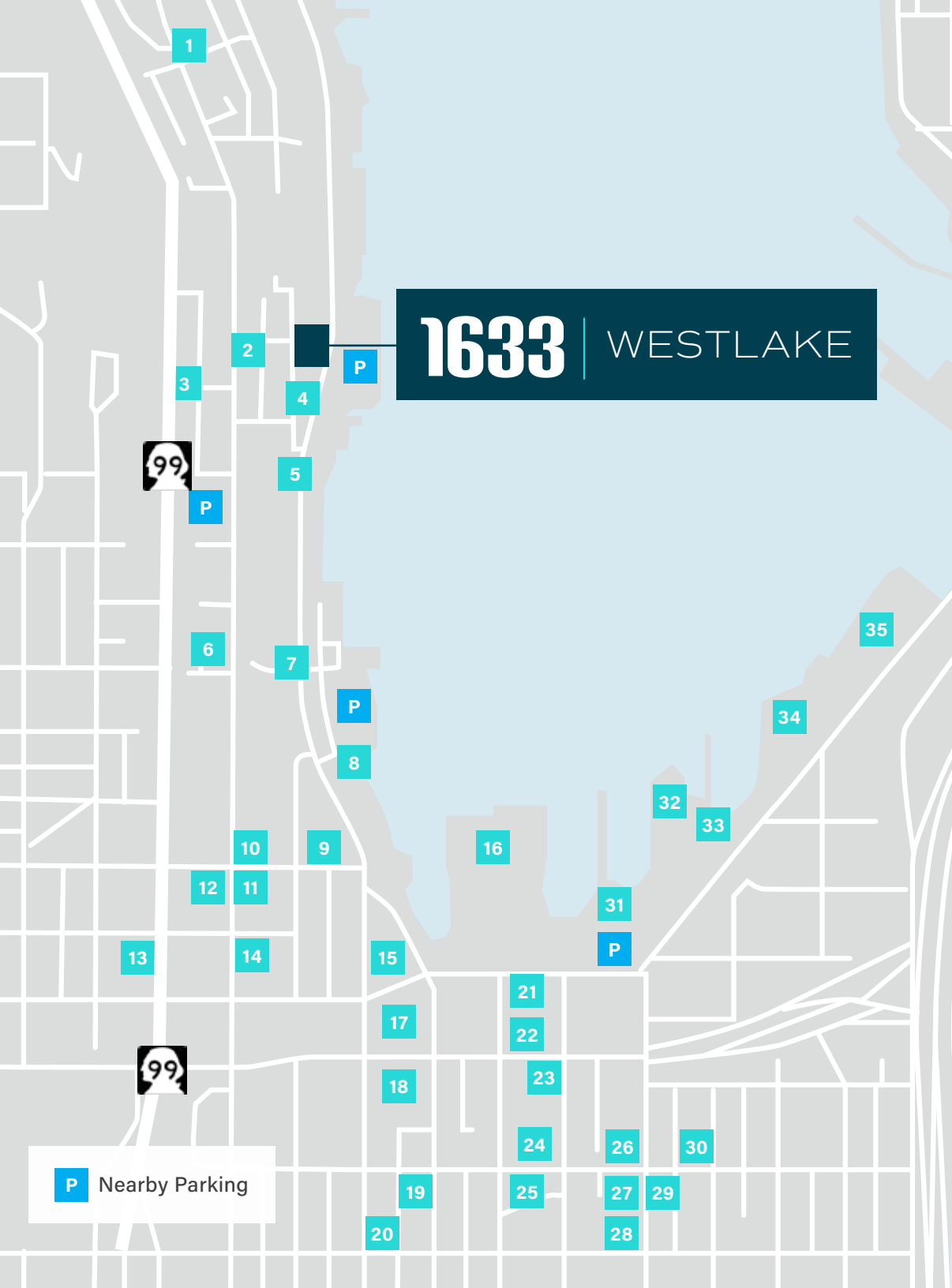
NEARBY AMENITIES

1. Lyon's Grocery
2. The Toledo
3. Chennai Express / Lake Union Eats/ Five Guys
4. Mother India Cuisine
5. Metropolitan Deli & Cafe
6. Caffe Umbria
7. Koibito Sushi & Teriyaki
8. Kenmore Air - Lake Union
9. Courtyard by Marriott
10. Stone Korean Restaurant
11. Tacos Chukis
12. Tanoor Seattle
13. Pagliacci Pizza
14. Cafe Hagen
15. Art Marble 21/ A Pizza Mart / Buca di Beppo
16. MOHAI
17. Flatstick Pub
18. Sizzle & Crunch
19. re:public
20. Sam's Tavern
21. Tapster
22. 203° Fahrenheit Coffe Company
23. Mayuri International Foods
24. Kathmandu MoMoCha / Ba Bar SLU
25. Starbucks
26. Bentoful / Cafe An'Clair / Roti Cuisine of India
27. Lassi & Spice
28. Row House Fitness
29. Meat Moot / Mochinut / Bar Harbor / Caffe Ladro
30. StretchLab
31. Daniel's Broiler
32. The Cove
33. Waterways Cruises & Events
34. I Love Sushi / The White Swan Public House
35. Duke's Seafood

The information contained herein has been given to us by the owner or sources which we deem reliable. We have no reason to doubt its accuracy, but we do not guarantee it. Prospective tenants should carefully verify all information contained herein.

1633 | WESTLAKE

P Nearby Parking



CORPORATE NEIGHBORS

1633 | WESTLAKE

5 MINUTE DRIVE TO FREMONT



Adobe



trust



Google

Meta

LAKE UNION PARK

FRED HUTCH

BILL & MELINDA GATES foundation

UW Medicine

amazon

Google

nanoString
presage

SEATTLE CENTER

ISB



SWEDISH

DENNY PARK



1633 | WESTLAKE

1633 WESTLAKE AVE N | SEATTLE, WA

P2 - LEVEL

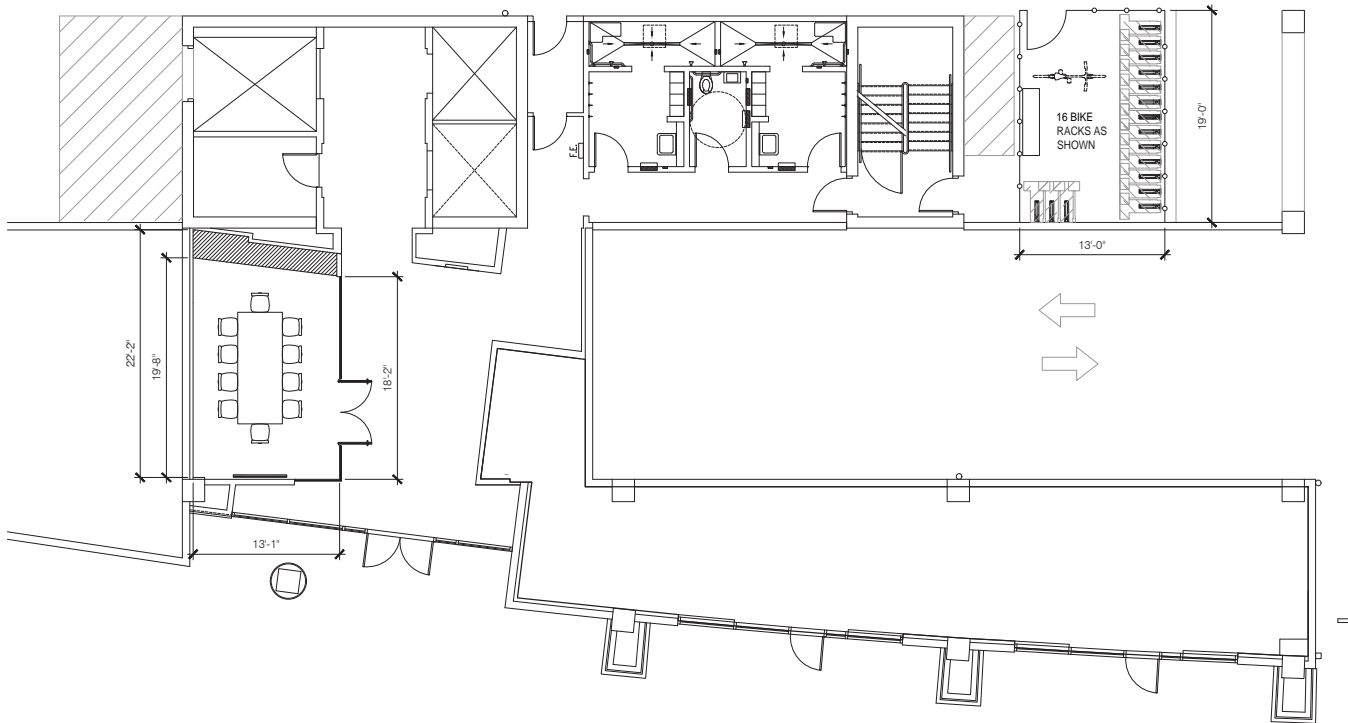
BUILDING AMENITIES

AVAILABLE NOW

Building Showers & Locker Room

UNDER CONSTRUCTION

Building Conference
Bike Parking



1633 | WESTLAKE

1633 WESTLAKE AVE N | SEATTLE, WA

FLOOR 1 - SUITE 100

8,255 RSF

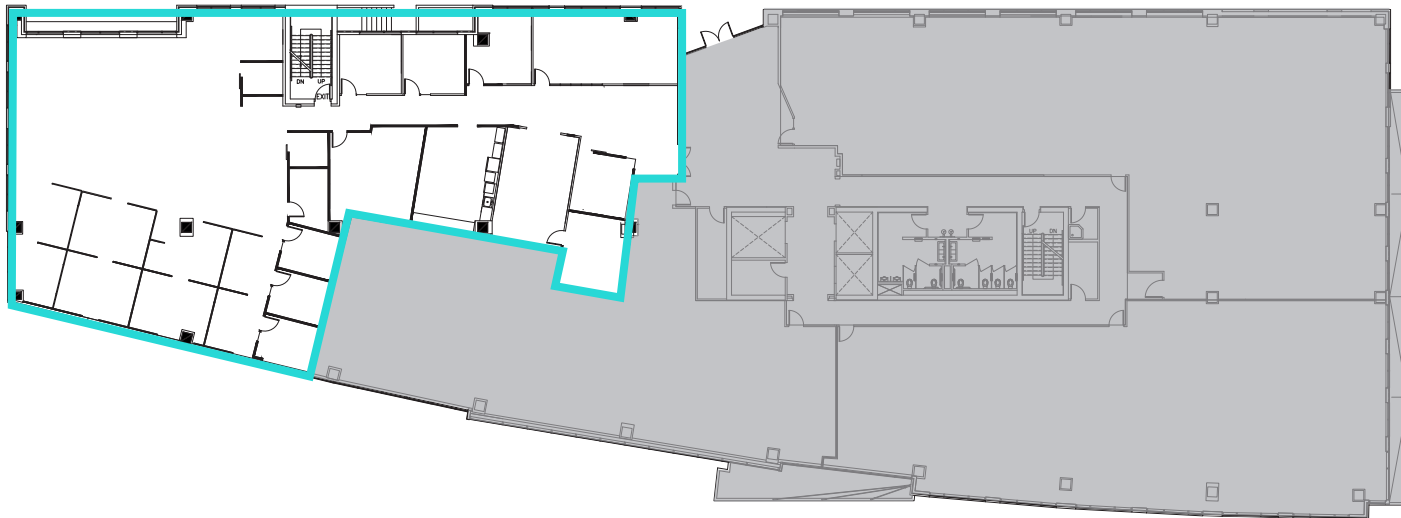
Available Now

Open area for workstations

Furniture can be made available

Kitchenette

Can be combined with Suite 110
for 12,620 RSF



**CLICK TO VIEW
VIRTUAL TOUR**

LAKE UNION VIEWS



1633 | WESTLAKE

1633 WESTLAKE AVE N | SEATTLE, WA

FLOOR 1 - SUITE 110

4,365 RSF

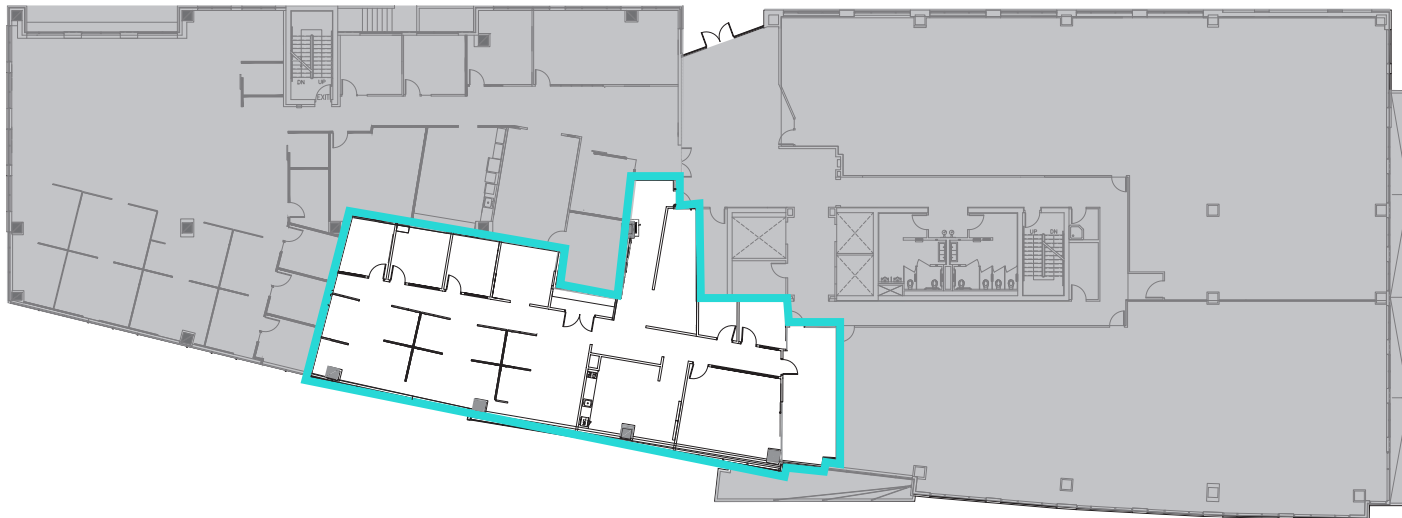
Available Now

Open area for workstations

Furniture can be made available

Kitchenette

Can be combined with Suite 100
for 12,620 RSF



[CLICK TO VIEW
VIRTUAL TOUR](#)

LAKE UNION VIEWS



1633 | WESTLAKE

1633 WESTLAKE AVE N | SEATTLE, WA

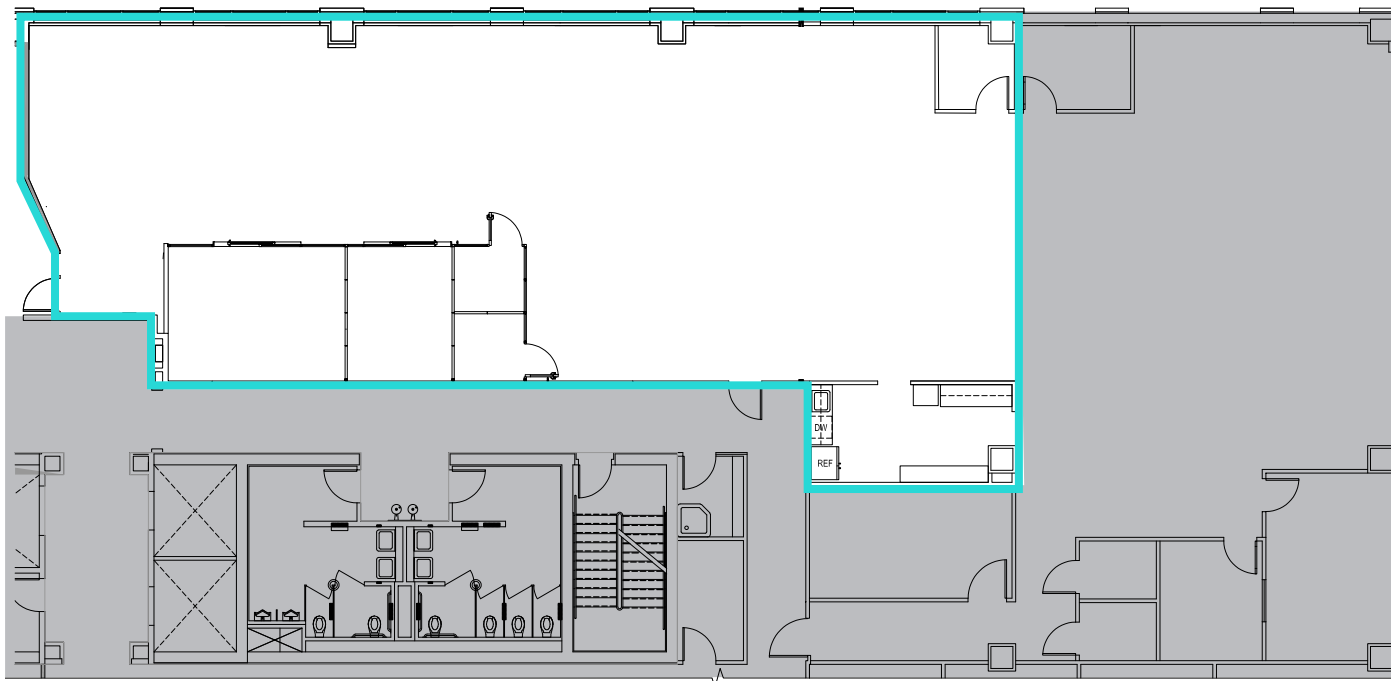
FLOOR 1 - SUITE 140

3,012 RSF

Available Now

Open area for workstations

Kitchenette



1633 | WESTLAKE

1633 WESTLAKE AVE N | SEATTLE, WA

FLOOR 2

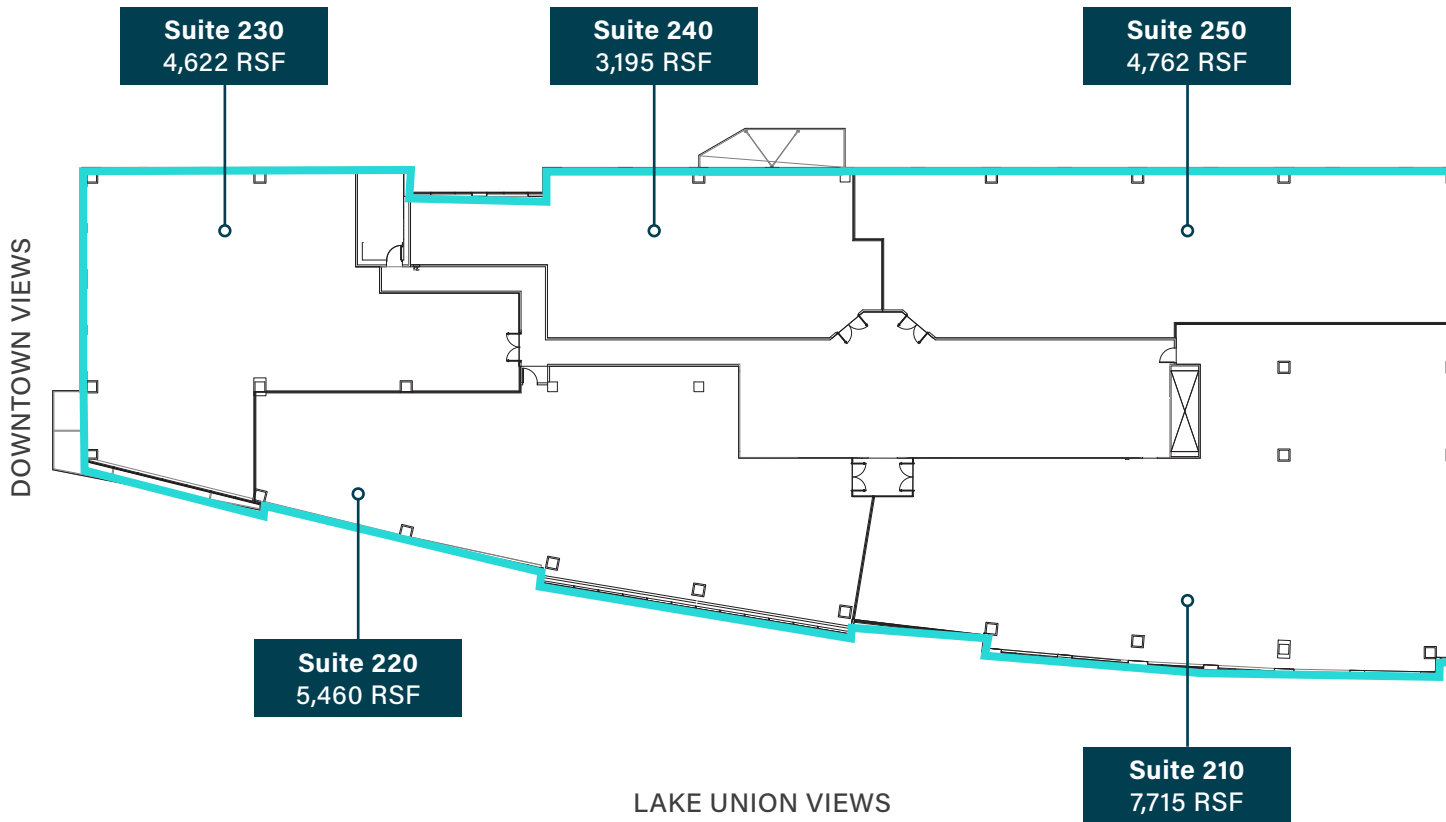
25,754 RSF

CONCEPTUAL PLAN

Available Now

Kitchenette

North & South Lake Union and
Downtown Views



1633 | WESTLAKE


1633 WESTLAKE AVE N | SEATTLE, WA

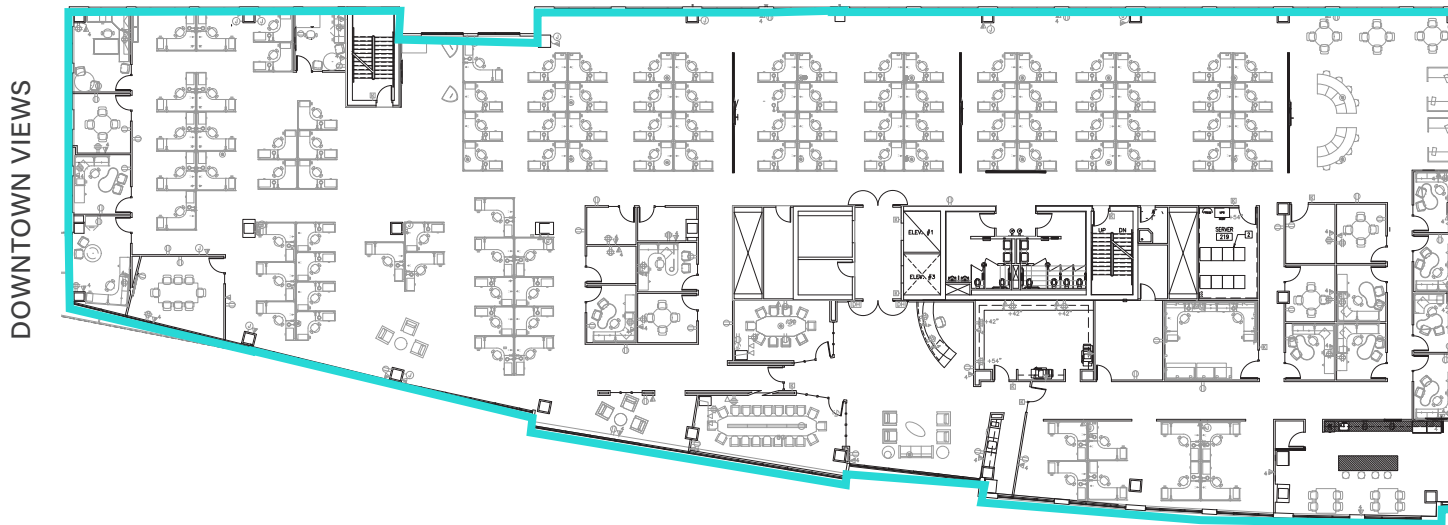
FLOOR 2

25,754 RSF

Available Now

North & South Lake Union and
Downtown Views

 [CLICK TO VIEW
VIRTUAL TOUR](#)



1633 | WESTLAKE

1633 WESTLAKE AVE N | SEATTLE, WA

PENTHOUSE

22,323 RSF

Available Now

Private rooftop

North & South Lake Union &
Downtown Views

27 private offices

Three conference rooms

Kitchenette

Open area for workstations

Reception area

Storage room



[CLICK TO VIEW
VIRTUAL TOUR](#)



DAMON MCCARTNEY | 206.838.7633 | mccartney@broderickgroup.com

DAVID GREENWOOD | 206.512.7386 | greenwood@broderickgroup.com

The information contained herein has been given to us by the owner or sources which we deem reliable. We have no reason to doubt its accuracy, but we do not guarantee it. Prospective tenants should carefully verify all information contained herein.