



1101 PACIFIC OFFICE BUILDING

*Second Floor Office Space
For Lease*

1101 PACIFIC AVE, TACOMA, WA 98402

1101 PACIFIC OFFICE BUILDING

PROPERTY OVERVIEW

Suite 200: 20,253 SF available

\$21.00 per RSF, full service

KeyBank retail located on the first floor

High ceiling, modern Class A finishes, and furniture can be made available

Superior location on the corner of Pacific Avenue and 11th Street

Easy access to Hwy 705, 509 and I-5

DEMOGRAPHICS

2023	1 Mile	3 Miles	5 Miles
Population	18,703	92,950	264,681
Median HH Income	\$63,492	\$84,213	\$89,871

NOW

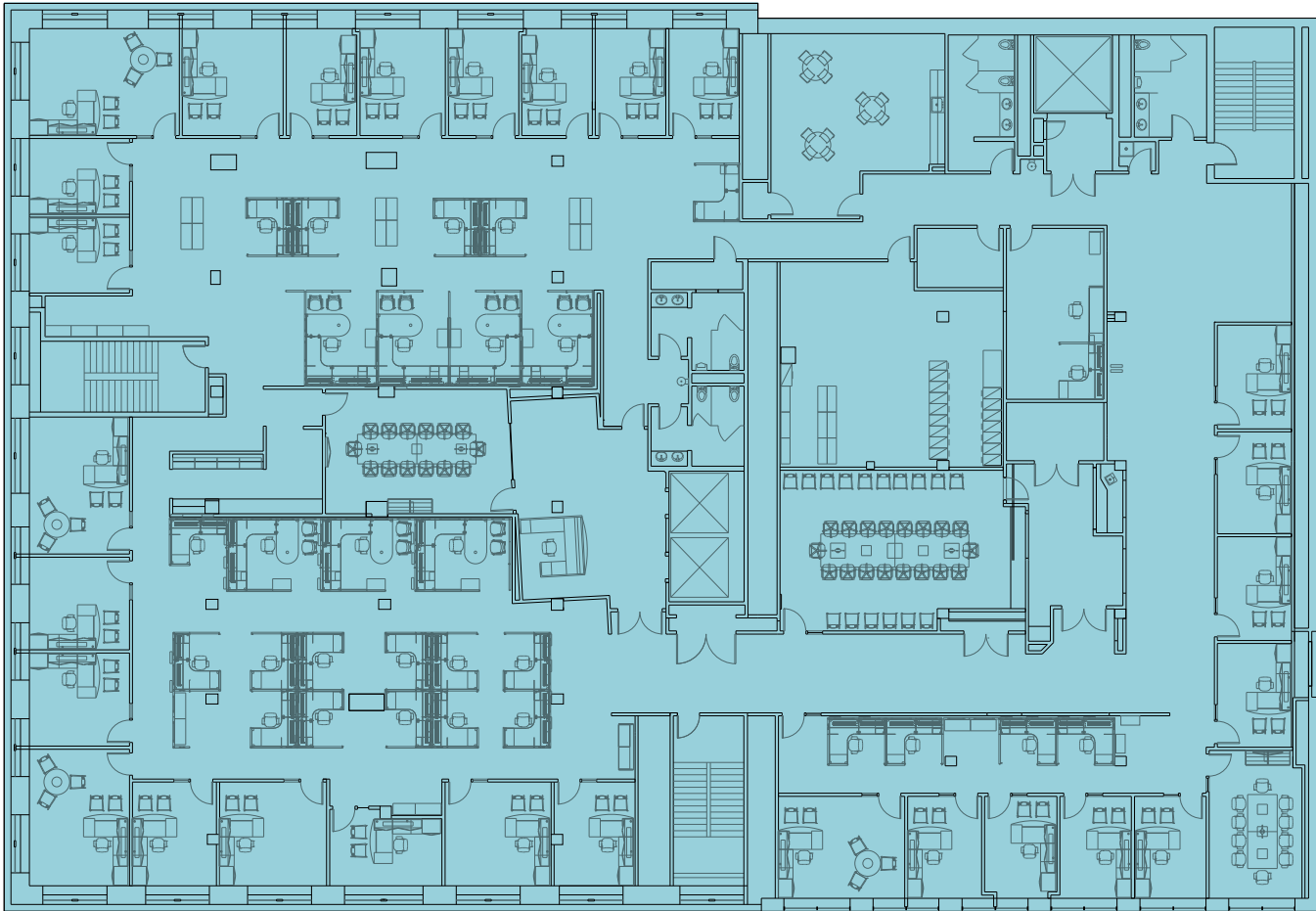
AVAILABLE

CONTACT

BROKERS FOR MORE
INFORMATION



SECOND FLOOR PLAN



SUITE 200

AVAILABLE

20,253 SF

AVAILABLE

\$21.00

PER RSF, FULL SERVICE

SUBJECT
PROPERTY

Exclusively listed by

DREW FRAME, SIOR
Senior Vice President
253.948.7032
drew.frame@kidder.com

RYAN KERSHAW
Associate
206.949.1334
ryan.kershaw@kidder.com

KIDDER.COM