

# 1118

80TH STREET SW  
EVERETT, WA



Stand-alone 48,740 SF Industrial Building with  
1.40 AC Secure Yard  
Available for Lease

**CBRE** **B&D**  
HOLDINGS

## PROPERTY OVERVIEW

Strategically located in the heart of Everett's established Seaway Center industrial corridor, the property offers a truly unique opportunity for a stand-alone building with surplus yard area. Convenient access to SR-526 and I-5, make it ideal for manufacturing, warehousing, or distribution operations. The building features a robust 1,200-amp, 208Y/120V three-phase electrical service, energy-efficient LED lighting throughout the warehouse, and a wet sprinkler system covering both office and warehouse areas. The site is fully fenced, including secure truck access, ensuring operational safety and privacy.

The larger overall site and current building configuration support a wide range of potential uses, offering convenient access to the paved, secured yard and the ability to expand the yard area in the northwest portion of the site.

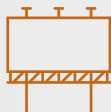
<b>TOTAL BUILDING SIZE</b>	±48,740 SF
<b>OFFICE SIZE</b>	±10,400 SF (2 Story)
<b>YARD SIZE</b>	±1.40 AC
<b>TOTAL LOT SIZE</b>	5.81 AC
<b>YEAR BUILT</b>	Original 1971, Updated Multiple Times
<b>ZONING</b>	HI (Heavy Industrial, City of Everett)
<b>ROOFING</b>	TPO Roof System - New in 2019
<b>CONSTRUCTION</b>	Pre-Engineered Metal
<b>LOADING</b>	7 Grade Level & 6 Dock High with In-Floor Levelers
<b>CLEAR HEIGHT</b>	18' - 24', Pitched Ceiling
<b>POWER</b>	1,200 Amp, 120/208 3-Phase
<b>AVAILABLE DATE</b>	April 2026
<b>LEASE RATE</b>	Contact Brokers for Building & Yard Rates



RARE STAND-ALONE  
BUILDING + YARD

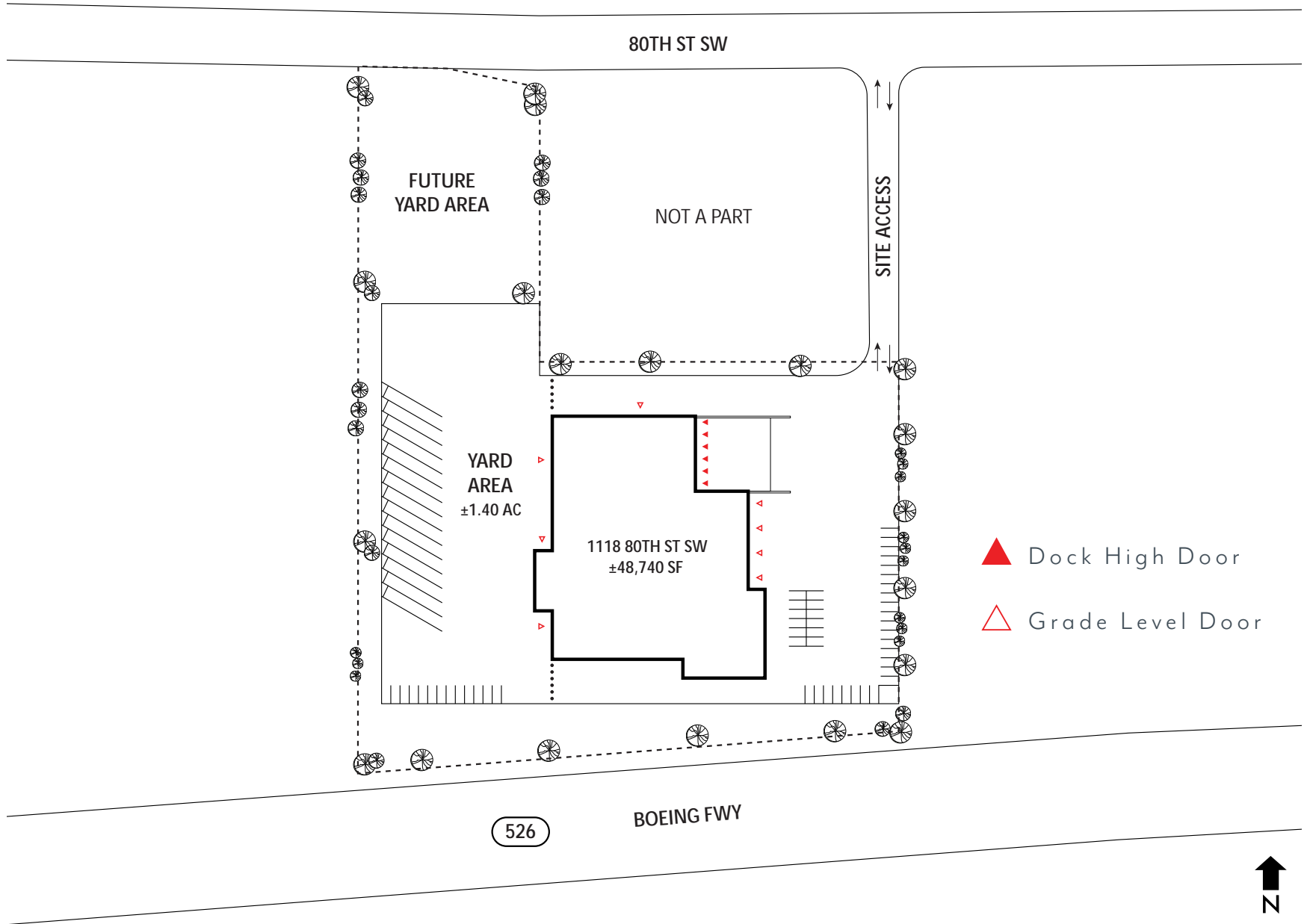


FULLY FENCED &  
SECURED SITE

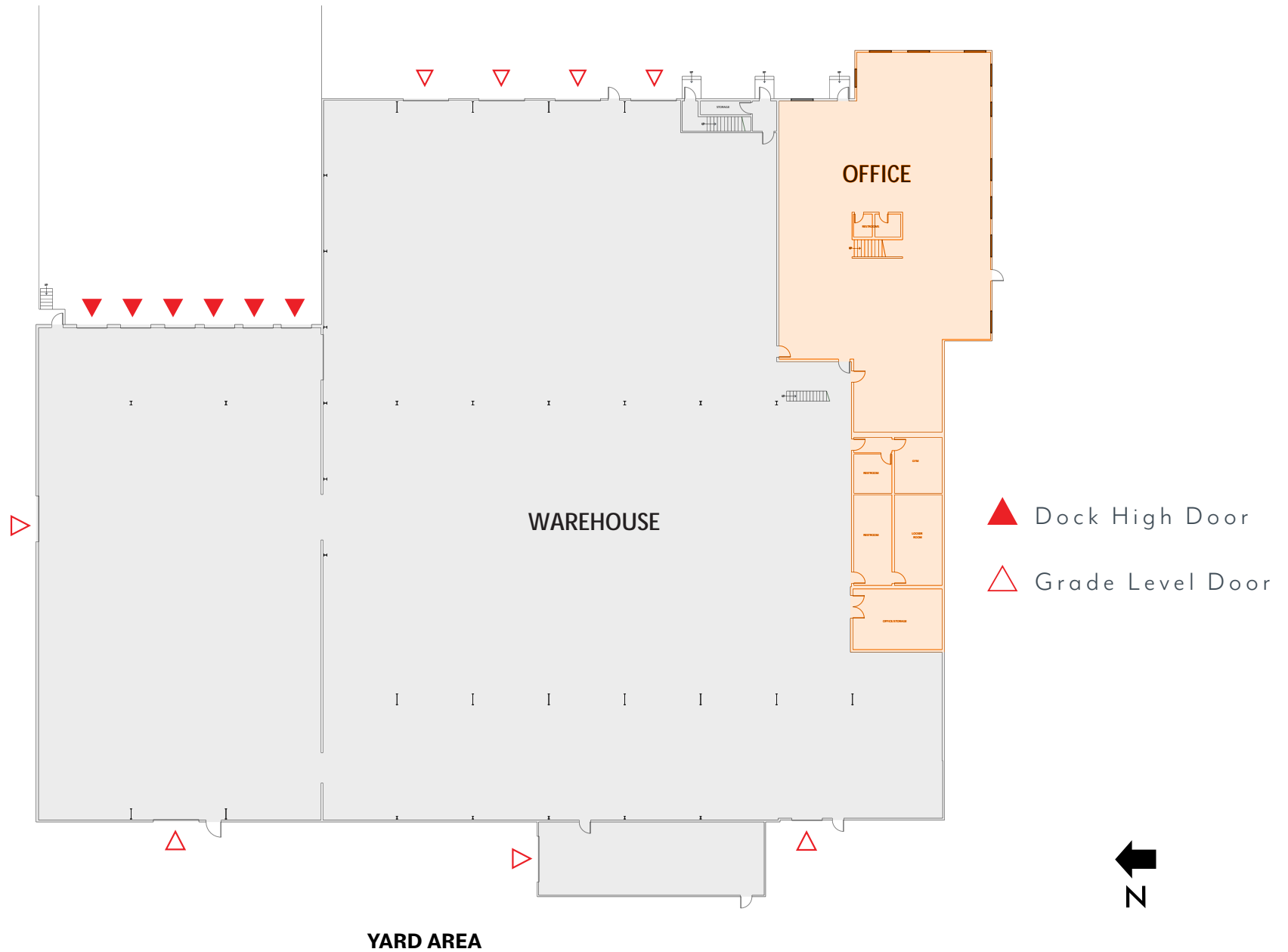


HIGH VISIBILITY SIGNAGE  
OPPORTUNITY TO SR-526

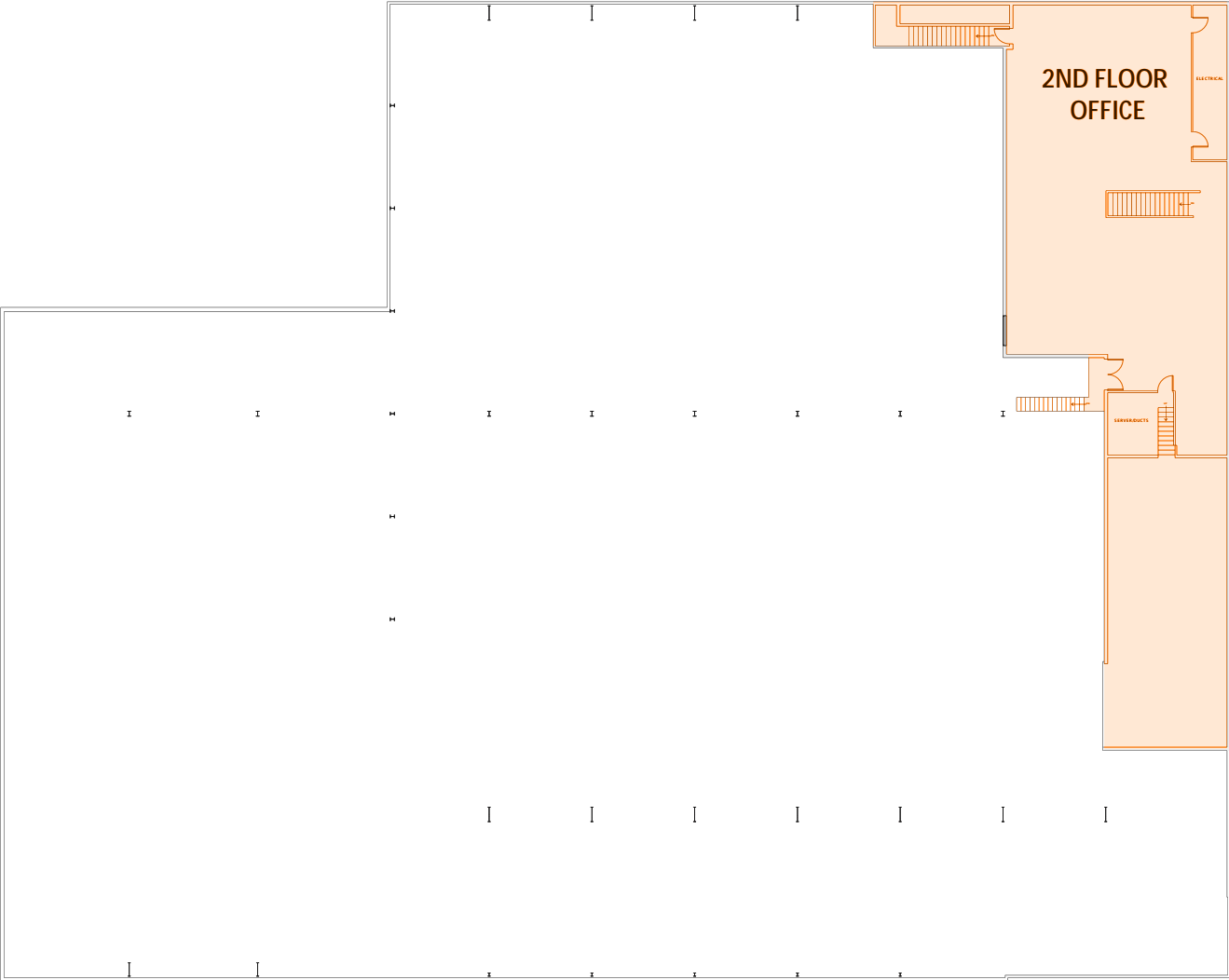
# SITE PLAN



# 1ST FLOOR SPACE PLAN



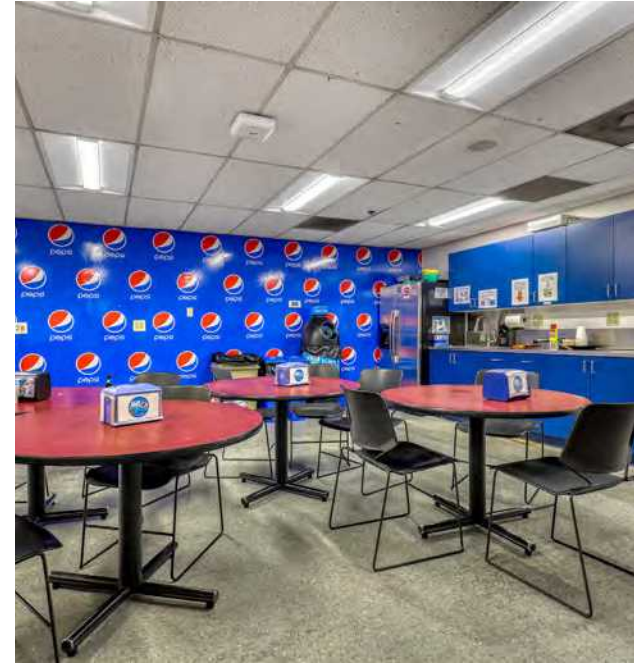
# 2ND FLOOR SPACE PLAN



# AERIAL PHOTOGRAPHY



# INTERIOR PHOTOGRAPHY

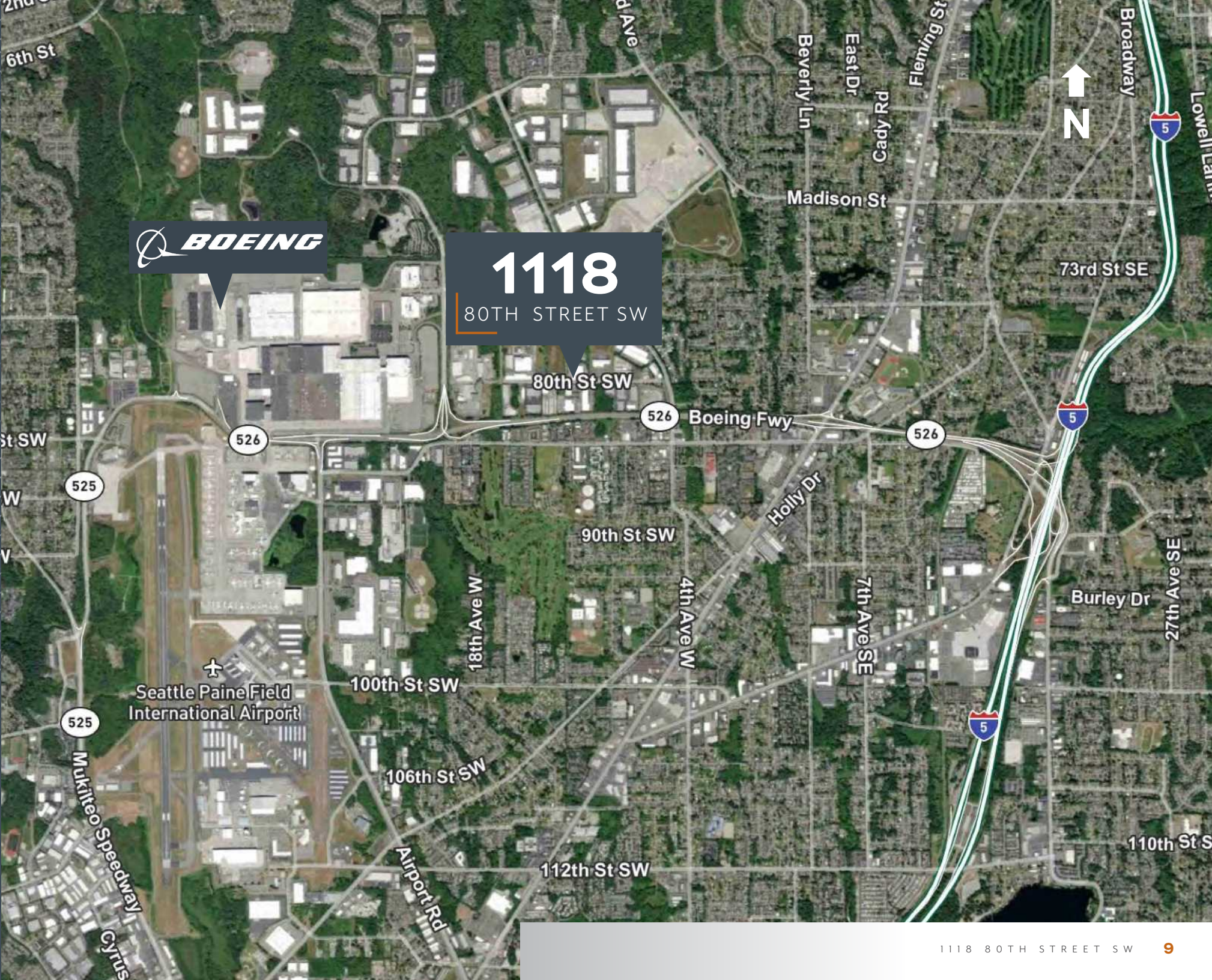


# EXTERIOR PHOTOGRAPHY





**1118**  
80TH STREET SW



EVERETT, WA

1118

80TH STREET SW

**JOHN BAUER**

Senior Vice President  
+1 425 462 6906  
john.bauer@cbre.com

**RIC BRANDT**

Senior Vice President  
+1 425 462 6901  
ric.brandt@cbre.com

**ERIK LARSON**

Senior Vice President  
+1 425 462 6954  
erik.larson@cbre.com

**CBRE, BELLEVUE**

929 108th Ave NE  
Suite 700  
Bellevue, WA 98004

© 2025 CBRE, Inc. All rights reserved. This information has been obtained from sources believed reliable but has not been verified for accuracy or completeness. CBRE, Inc. makes no guarantee, representation or warranty and accepts no responsibility or liability as to the accuracy, completeness, or reliability of the information contained herein. You should conduct a careful, independent investigation of the property and verify all information. Any reliance on this information is solely at your own risk. CBRE and the CBRE logo are service marks of CBRE, Inc. All other marks displayed on this document are the property of their respective owners, and the use of such marks does not imply any affiliation with or endorsement of CBRE. Photos herein are the property of their respective owners. Use of these images without the express written consent of the owner is prohibited.

**CBRE** **B&D**  
HOLDINGS