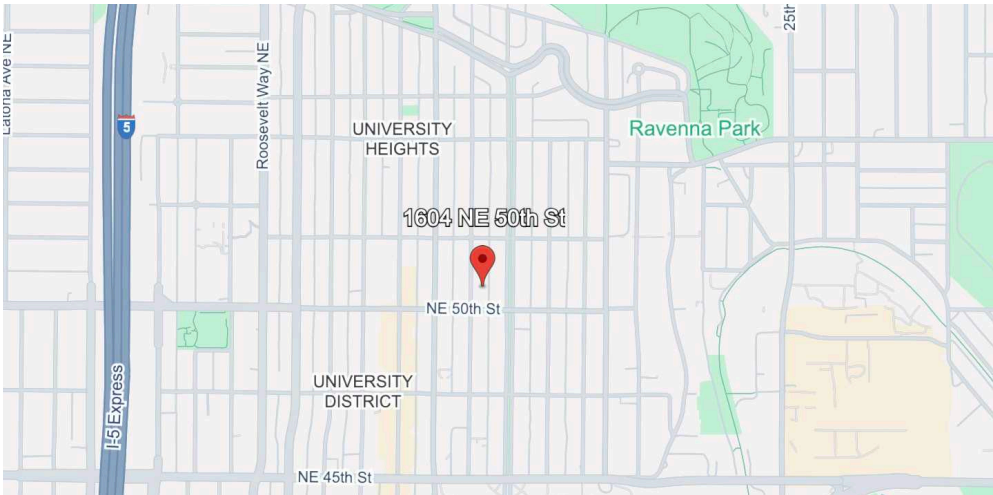


# FOR LEASE

U-DISTRICT OFFICE SPACE  
1604 NE 50TH ST | SEATTLE | 98105



## PROPERTY FEATURES

- 5 individual offices for lease in a recently renovated church
- Spaces can only be leased to non-profit groups (defined as 501 (c) 3 Organizations)
- Each unit is about 900 RSF, and can be joined together or leased individually
- Parking available
- \$17/SF/YR gross



**ANDY RANGLES** | 206.405.0090  
andy@ewingandclark.com

**TOM GRAFF** | 206.295.1445  
tomgraff@ewingandclark.com

# INTERIOR SHOTS

1604 NE 50TH ST | SEATTLE | 98105

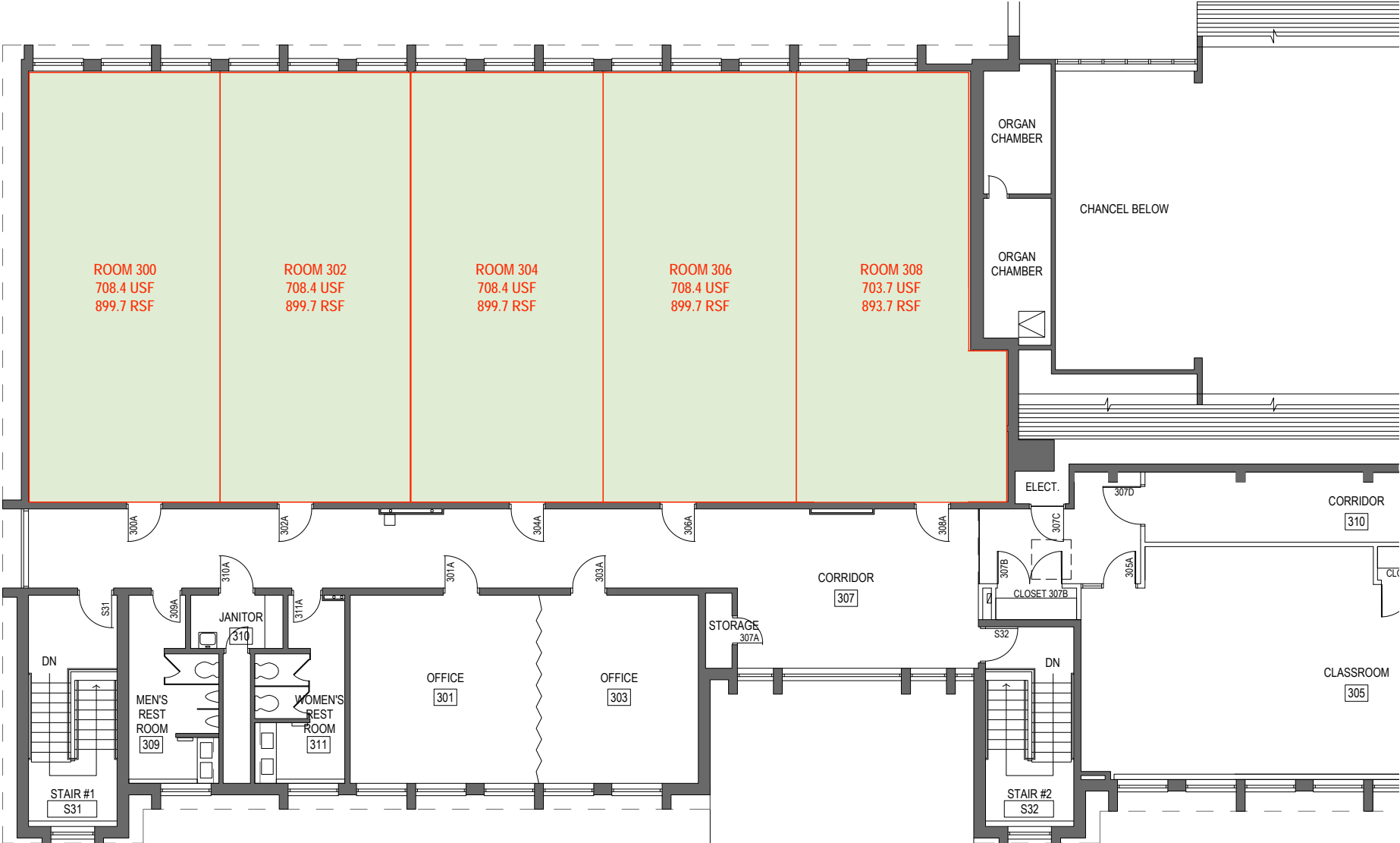


**ANDY RANGLES** | 206.405.0090  
andy@ewingandclark.com

**TOM GRAFF** | 206.295.1445  
tomgraff@ewingandclark.com

# FLOOR PLAN

1604 NE 50TH ST | SEATTLE | 98105

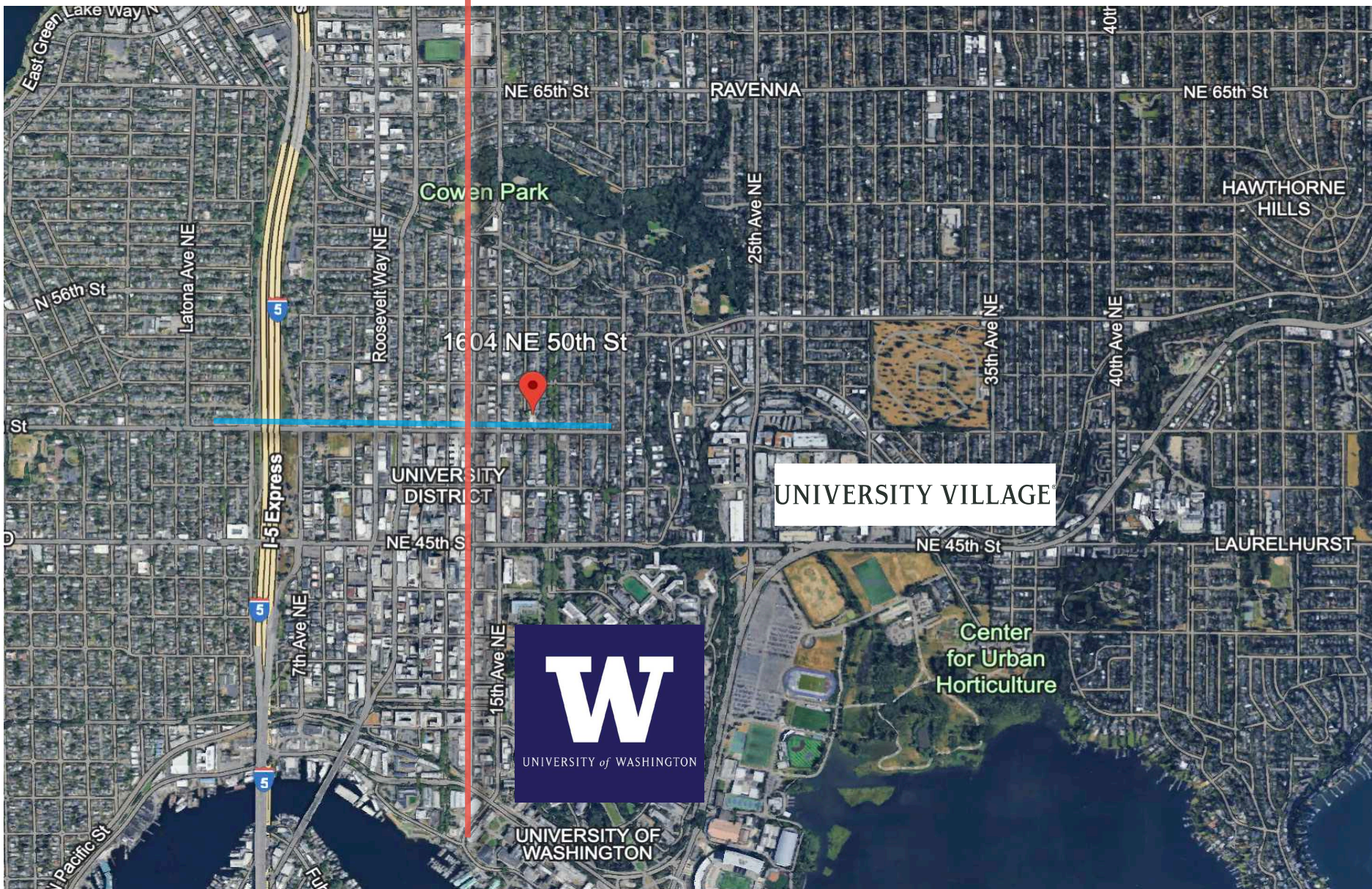


**ANDY RANGLES** | 206.405.0090  
andy@ewingandclark.com

**TOM GRAFF** | 206.295.1445  
tomgraff@ewingandclark.com

# AERIAL MAP

1604 NE 50TH ST | SEATTLE | 98105



**ANDY RANGLES** | 206.405.0090  
andy@ewingandclark.com

**TOM GRAFF** | 206.295.1445  
tomgraff@ewingandclark.com