

# FOR LEASE



## NORTH SPOKANE FINANCIAL CENTER

7307 N Division Street | Spokane, WA 99208

### BUILDING DETAILS

<b>AVAILABLE SF</b>		±1,000 - ±3,291 RSF
<b>LEASE RATE</b>		\$19-\$22.00 PSF /YR
<b>LEASE TYPE</b>		Full Service (includes janitorial)

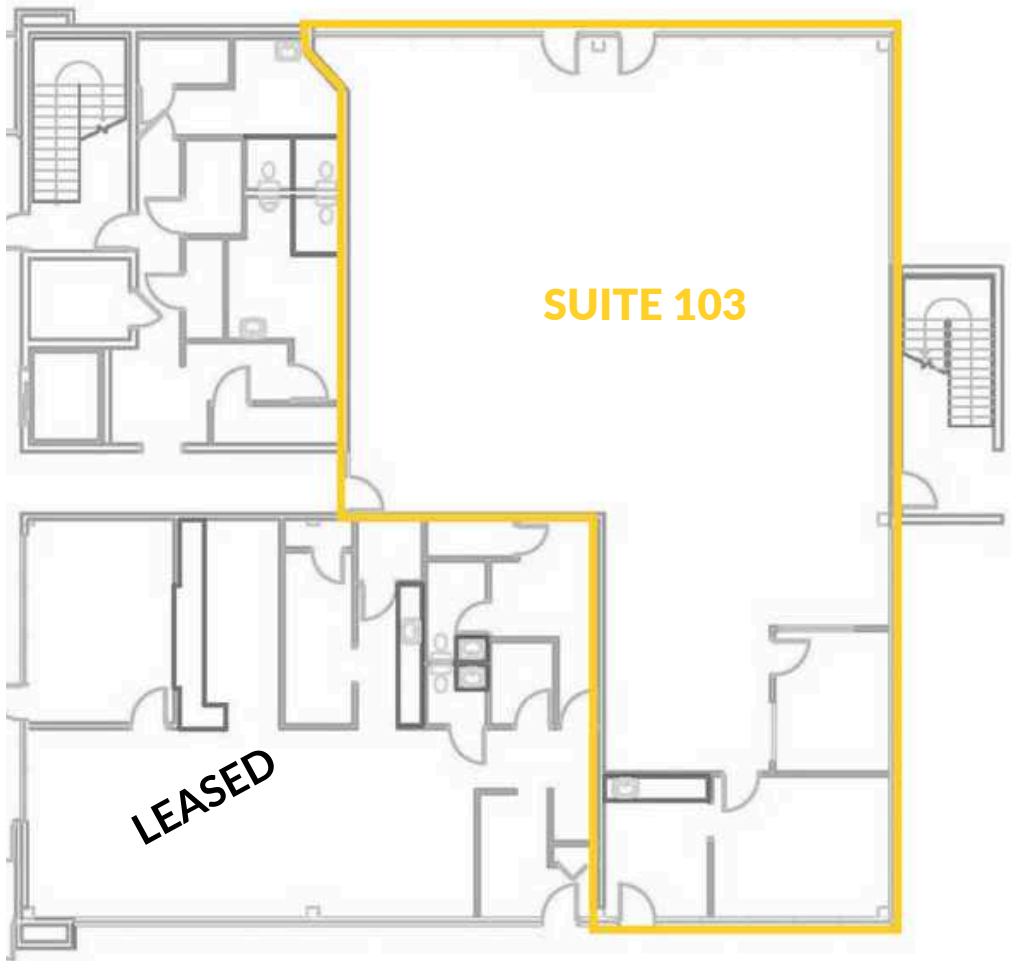
- Custom office configurations available
- Close to: restaurants, services, banking, & entertainment
- 10 minutes to Downtown Spokane
- North-South access along Division and Maple
- East-West access at Francis
- Excellent visibility
- Pylon signage available
- Free, on-site parking



**KIEMLEHAGOOD**

**ANDY BUTLER, CCIM**  
509.385.9121  
andy.butler@kiemlehaood.com

**KIM FLOYD, PROPERTY MANAGER**  
509.755.7522  
kimf@kiemlehaood.com



**SUITE 103**

**LEASE RATE** | \$22.00 PSF /YR

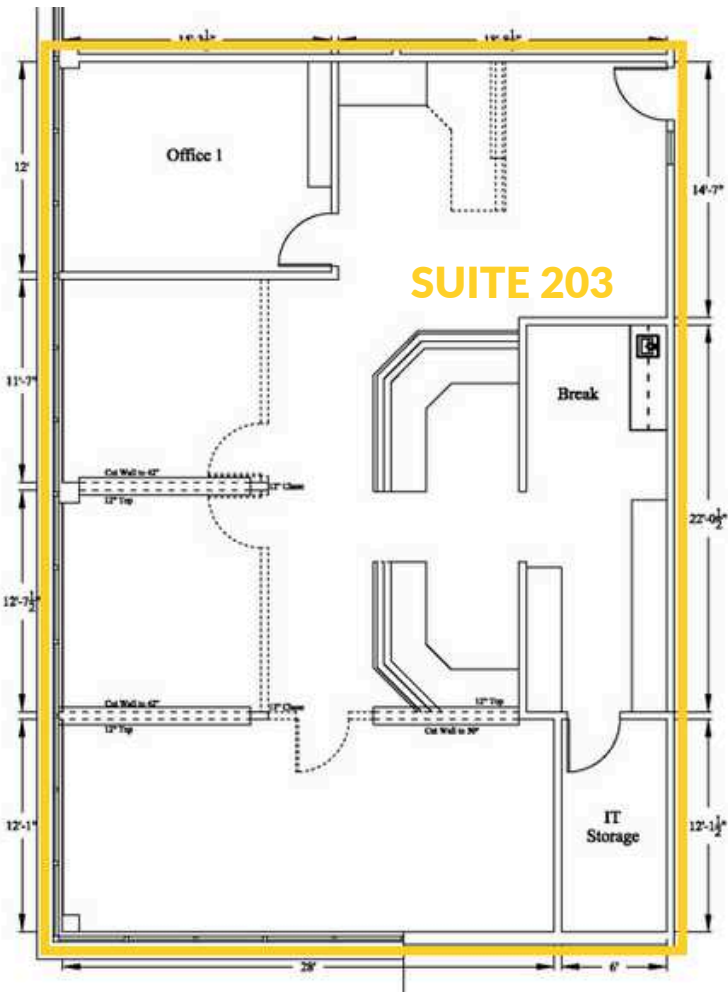
**LEASE TYPE** | Full Service

**SPACE SIZE** | ±3,291 SF

(divisible to±1,500 RSF)

- Ground Floor, North & South Suite Entrances
- Tenant Improvements Available
- Building & Monument Signage Available





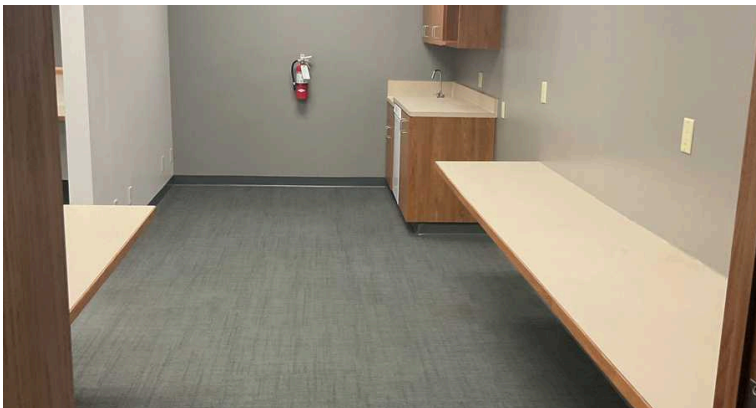
**SUITE 203**

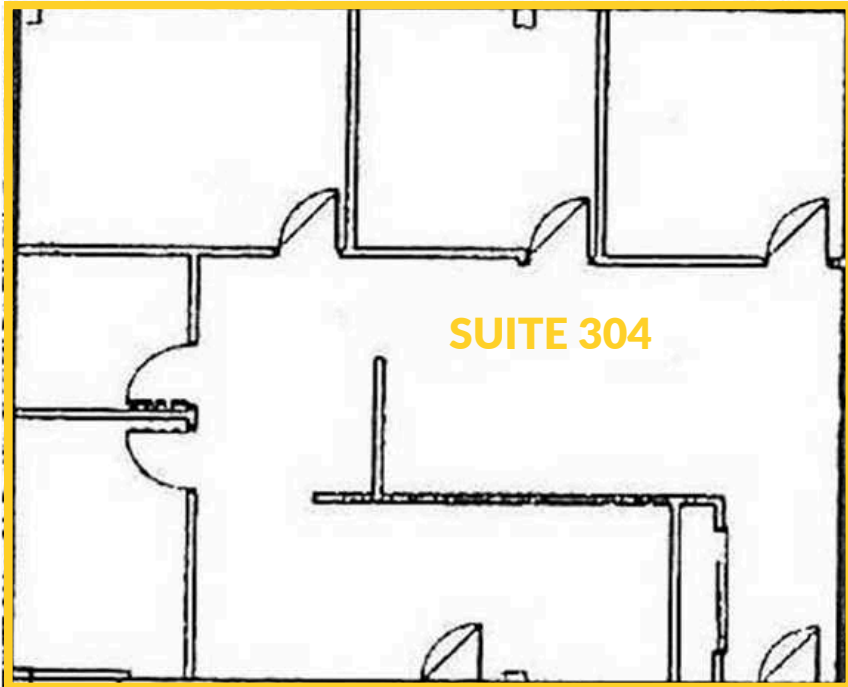
**LEASE RATE** | \$19.00 PSF /YR  
(\$3,369.33 /MO)

**LEASE TYPE** | Full Service

**SPACE SIZE** | ±2,128 SF

- Open Floor Plan
- North Views
- Tenant Improvements Available
- Building & Monument Signage Available





**SUITE 304**

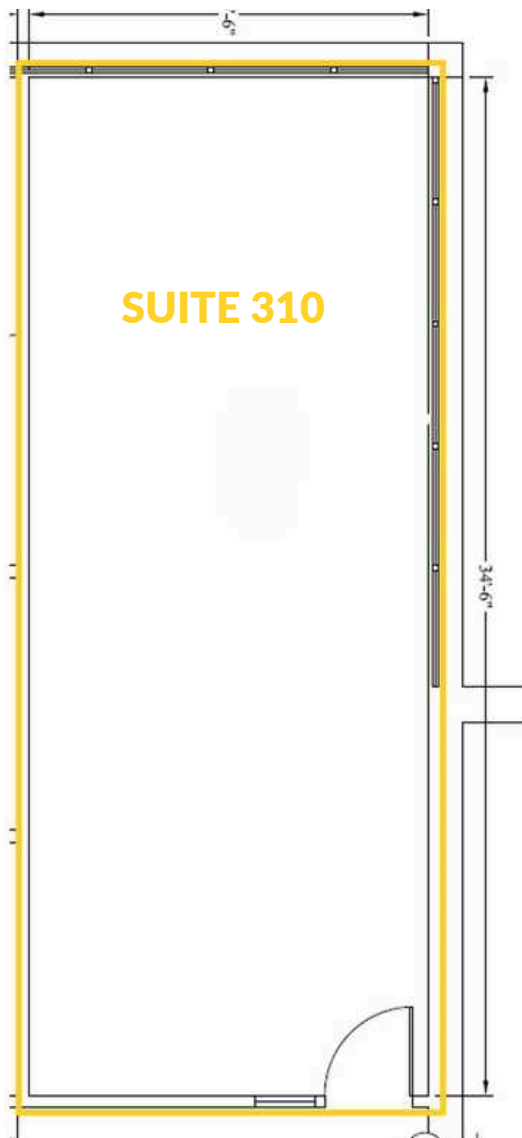
**LEASE RATE** | \$22.00 PSF /YR  
(\$2,995.66 /MO)

**LEASE TYPE** | Full Service

**SPACE SIZE** | ±1,634 SF

- Available 4/1/2026
- Private Offices
- Break Room
- Conference Room
- Reception Area
- Flooring & Paint Allowances Available
- Tenant Improvements Available
- Building & Monument Signage Available





**SUITE 310**

**LEASE RATE** | \$21.00 PSF /YR  
(\$1,156.75 /MO)

**LEASE TYPE** | Full Service

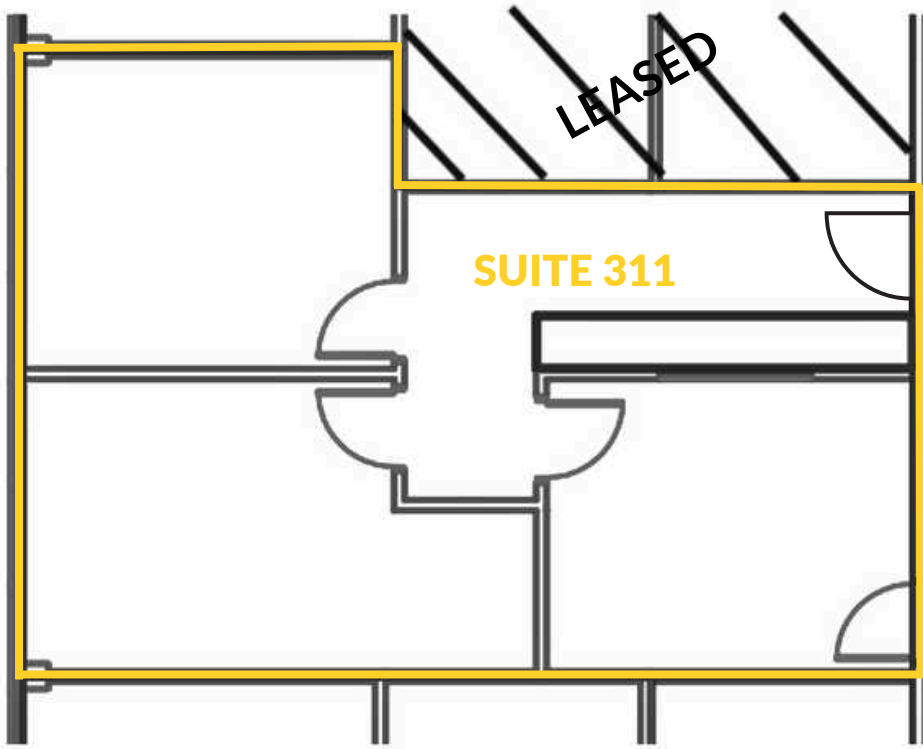
**SPACE SIZE** | ±661 SF

- Office Buildout Available
- North Views
- Tenant Improvements Available
- Building & Monument Signage Available



\*Rendering





**SUITE 311**

**LEASE RATE** | \$22.00 PSF /YR  
(\$1,598.66 /MO)

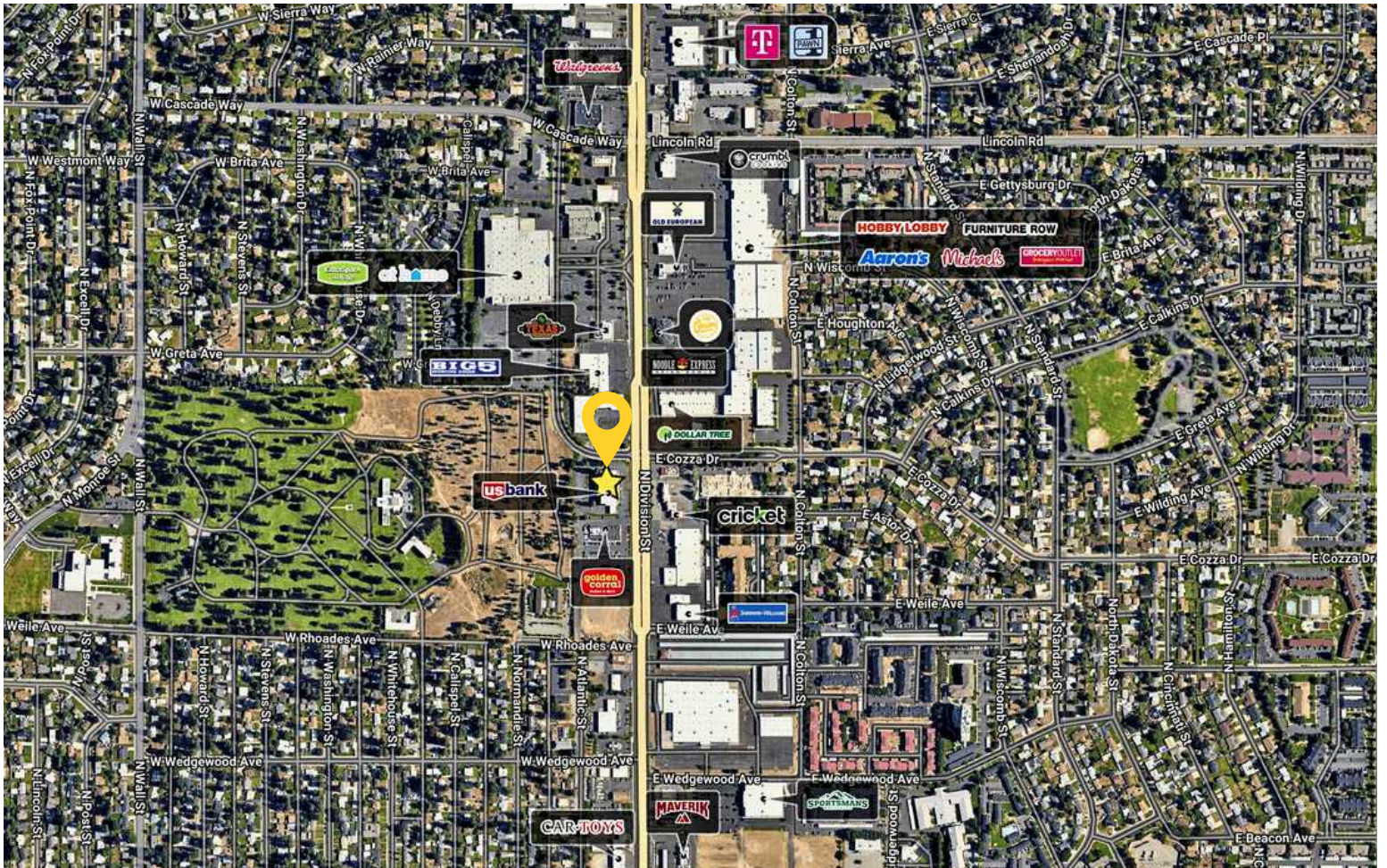
**LEASE TYPE** | Full Service

**SPACE SIZE** | ±872 SF

- Former Counselor Office
- Separate Entrance/Exit doors to Premises
- Tenant Improvements Available
- Building & Monument Signage Available







# NORTH SPOKANE FINANCIAL CENTER

7307 N Division Street | Spokane, WA 99208

[VIEW LOCATION](#)



**ANDY BUTLER, CCIM**

509.385.9121 | andy.butler@kiemlehagood.com

**KIM FLOYD, PROPERTY MANAGER**

509.755.7522 | kimf@kiemlehagood.com



No warranty or representation, expressed or implied, is made by Kiemle Hagood, its agents or its employees as to the accuracy of the information contained herein. All information furnished is from sources deemed reliable and submitted subject to errors, omissions, change of terms and conditions, prior sale, lease or financing, or withdrawal without notice. No one should rely solely on the above information, but instead should conduct their own investigation to independently satisfy themselves. Kiemle Hagood respects the intellectual property of others: If you believe the copyright in your work has been violated through this Website, please contact our office for notice of claims of copyright infringement. For your complaint to be valid under the Digital Millennium Copyright Act of 1998 (DMCA), you must provide the following information when providing notice of the claimed copyright infringement: Identify the material on the Website that you believe infringes your work, with enough detail so that we may locate it on the Website; provide your address, telephone number and email address; provide a statement that you have a good faith belief that the disputed use is not authorized by the copyright owner, its agent, or the law; provide a statement that the information in the notification is accurate, and under penalty of perjury, that the complaining party is authorized to act on behalf of the owner of an exclusive right that is allegedly infringed; and provide your physical or electronic signature. Upon receiving your complaint, Kiemle Hagood will, upon review, remove content that you believe infringes your copyright if the complaint is found to be valid.

**OFFICE LOCATIONS**

SPOKANE | COEUR D'ALENE | TRI-CITIES | MISSOULA

601 W MAIN AVENUE, SUITE 400  
SPOKANE WA 99201