

FOR LEASE

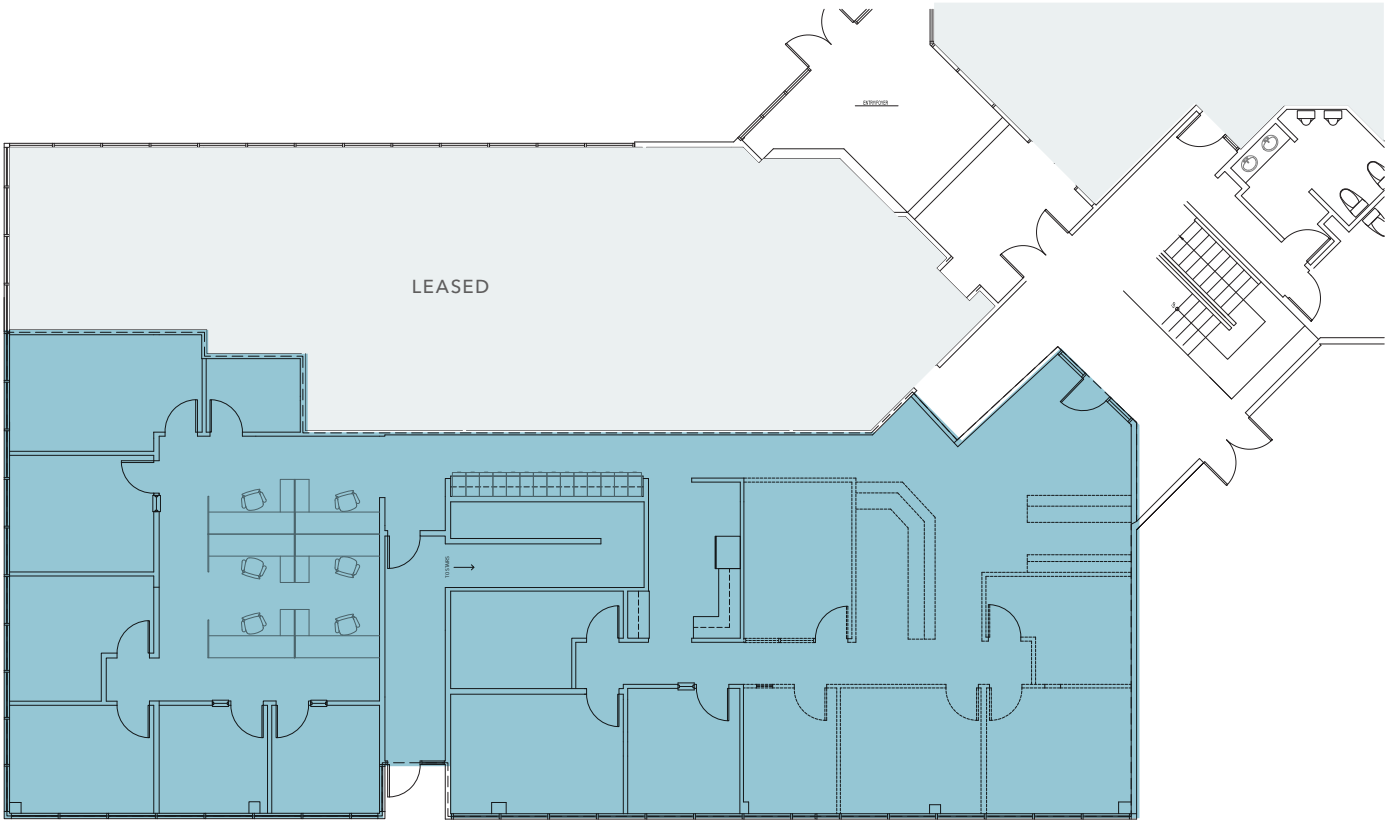
PARKLANE EXECUTIVE CENTER

Located in Federal Way City Center

31620 23RD AVENUE S, FEDERAL WAY, WA



FIRST FLOOR PLAN



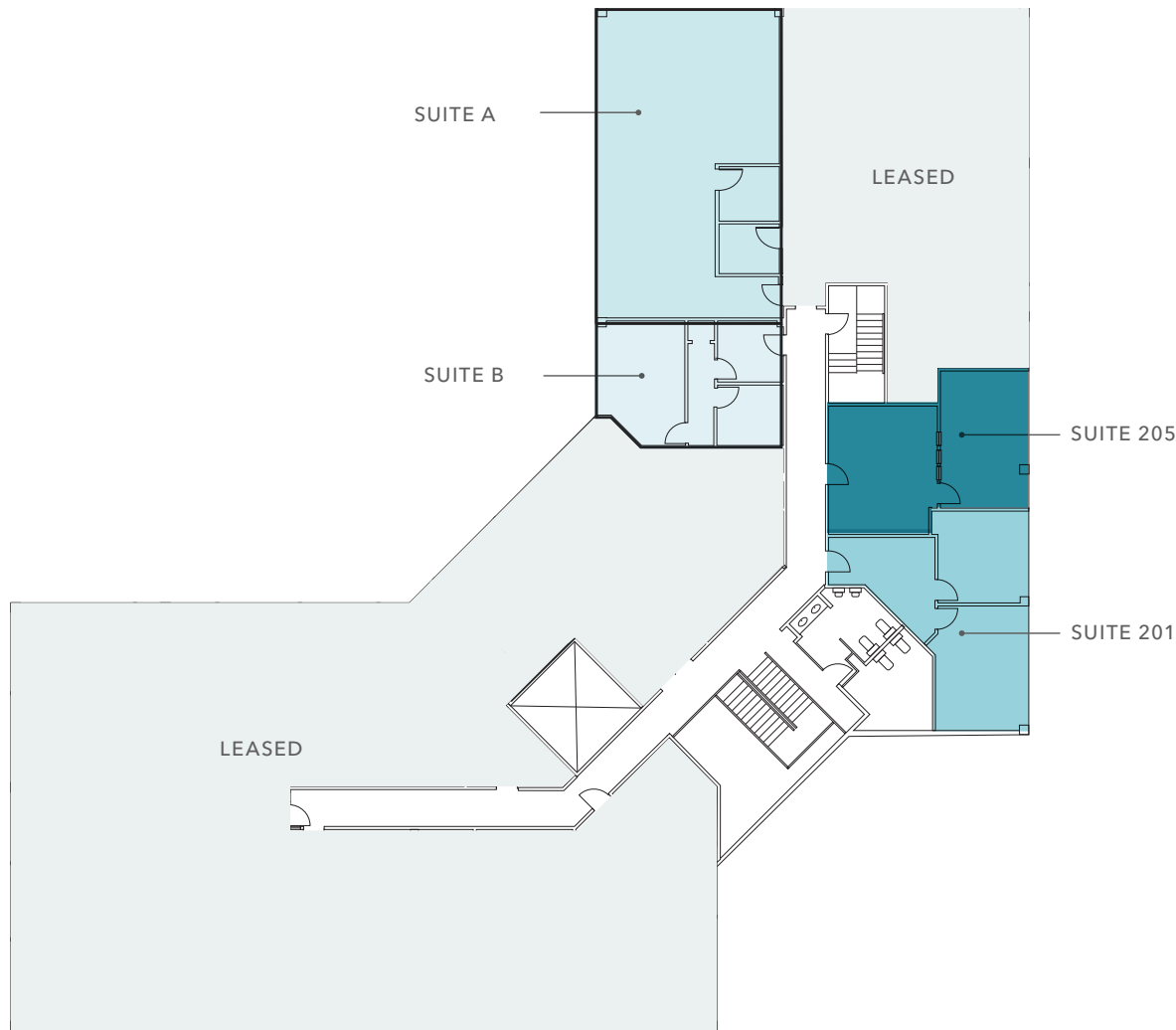
4,224 SF

SUITE 110

\$26.00

LEASE RATE (PSF), FULL SERVICE

SECOND FLOOR PLAN



1,386 SF

SUITE A

690 SF

SUITE B

720 SF

SUITE 201

670 SF

SUITE 205

\$26.00

LEASE RATE (PSF), FULL SERVICE

THIRD FLOOR PLAN



1,318 SF

SUITE 306

902 SF

SUITE 308

560 SF

SUITE 309

1,076 SF

SUITE 314

518 SF

SUITE 319

\$26.00

LEASE RATE (PSF), FULL SERVICE

HIGHLY- ACCESSIBLE LOCATION

Close to Interstate 5

Adjacent to Transit Center

Walking distance to restaurants and shopping

5 MIN

TIGARD RETAIL CORE

13 MIN

PORTLAND CBD





PARKLANE EXECUTIVE CENTER

*For more information on
this property, please contact*

DREW FRAME, SIOR
253.948.7032
drew.frame@kidder.com

RYAN KERSHAW
206.949.1334
ryan.kershaw@kidder.com

KIDDER.COM

This information supplied herein is from sources we deem reliable. It is provided without any representation, warranty, or guarantee, expressed or implied as to its accuracy. Prospective Buyer or Tenant should conduct an independent investigation and verification of all matters deemed to be material, including, but not limited to, statements of income and expenses. Consult your attorney, accountant, or other professional advisor.

