



DOWNTOWN

CLASS -A

MEDICAL

AVAILABILITY

## AVAILABLE SPACES

SPACE	LEASE RATE	SIZE (SF)
Suite 102 - Shell Space	\$25.00 SF/yr	5,369 SF
Suite 302	\$25.00 SF/yr	1,740 SF

## PROPERTY FEATURES

- Located within the Hospital District and on a bus line adjacent to Deaconess Medical Center, one block east of Shriner's Hospital for Children, one mile west of Providence Sacred Heart Medical Center & Children's Hospital and St. Luke's Rehabilitation Institute.
- Five-story medical office ideally situated between the MultiCare Health System Campus and the Providence Health & Services Campus. Located within the Hospital District and on a bus line adjacent to Deaconess Medical Center, one block east of Shriner's Hospital for Children.
- Convenient Freeway Access
- Attached Parking Garage
- Secure building and elevator access after hours
- Generous TI allowance with space planning services on 5 year lease terms or longer
- NNN Est. Expenses: \$9.53 PSF

**Goodale & Barbieri Company**

818 West Riverside #300  
Spokane, WA 99201  
www.g-b.com

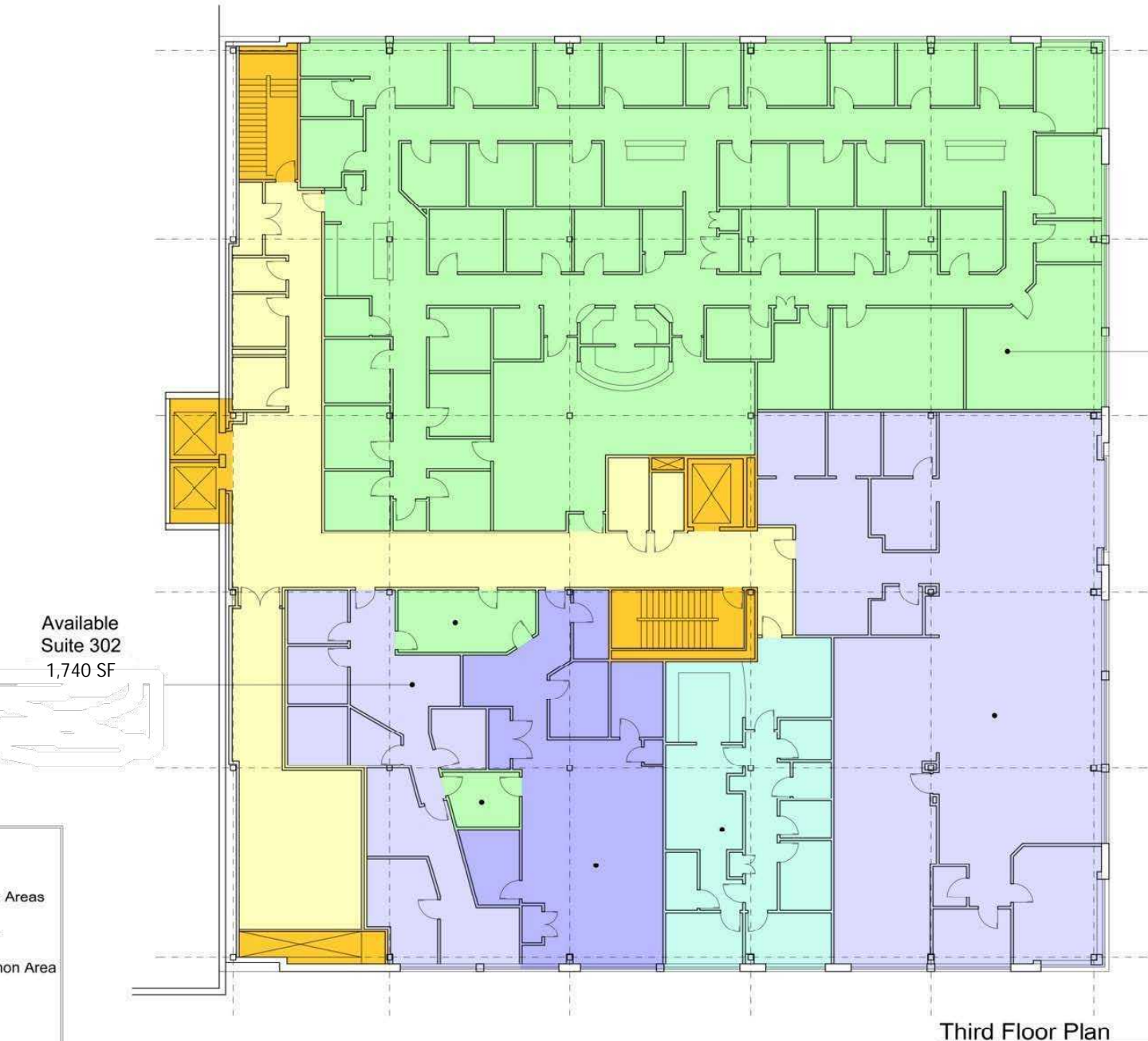
**Cory Barbieri** | Vice President  
509.344.4901 // cbarbieri@g-b.com

**Bill Duffy** | Commercial & Leasing Manager  
509.344.4917 // bduffy@g-b.com

1



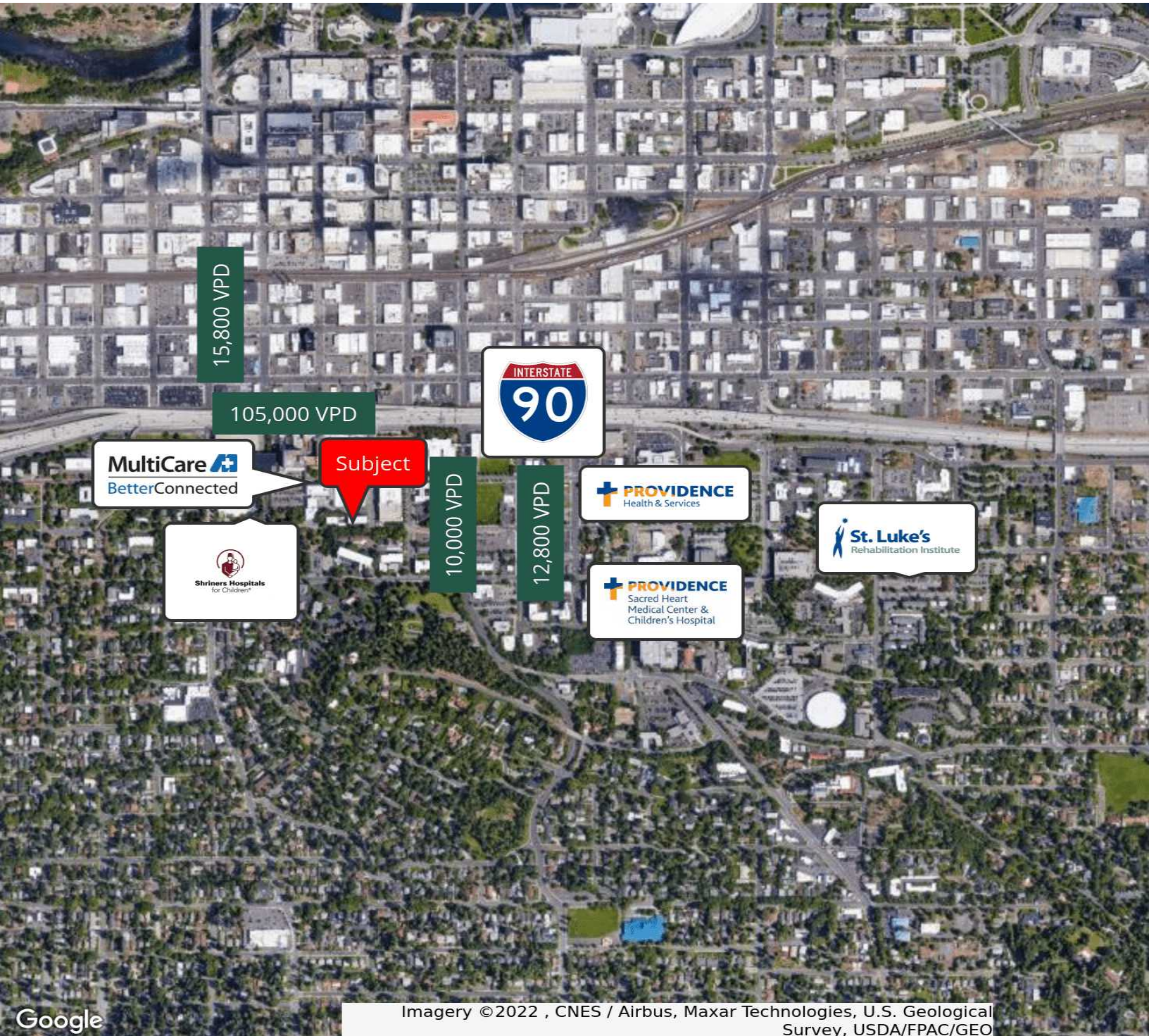
General Warranty Disclaimer: G&B makes no warranties, representations, or guarantees as to Seller/Owner's supplied information or the Property itself. G&B disclaims all warranties (express and implied) as to the Property and Seller/Owner's statements/information about the Property. Buyer/Lessee shall not rely on Property information supplied by Seller/Owner or G&B. Buyer/Lessee shall conduct its own due diligence to verify any information and the Property's suitability for specific purposes. Copyright information: G&B represents the intellectual property of the firm and its Digital Millennium Copyright Act.



SCALE: 1/8" = 1'-0"

This drawing is an accurate representation of the information provided to produce this drawing and does not constitute an accurate representation of the actual conditions on the ground. Activities requiring accurate dimensions should include field verification.

General Warranty Disclaimer: G&B makes no warranties, representations, or guarantees as to Seller/Owner's supplied information or the Property itself. G&B disclaims all warranties (express and implied) as to the Property and Seller/Owner's statements/information about the Property. Buyer/Lessee shall not rely on Property information supplied by Seller/Owner or G&B. Buyer/Lessee shall conduct its own due diligence to verify any information and the Property's suitability for specific purposes. Copyright Information: G&B represents the intellectual property of the author and its Digital Millennium Copyright Act.



Google

Imagery ©2022 , CNES / Airbus, Maxar Technologies, U.S. Geological Survey, USDA/FPAC/GEO

General Warranty Disclaimer: G&B makes no warranties, representations, or guarantees as to Seller/Owner's supplied information or the Property itself. G&B disclaims all warranties (express and implied) as to the Property and Seller/Owner's statements/information about the Property. Buyer/Lessee shall not rely on Property information supplied by Seller/Owner or G&B. Buyer/Lessee shall conduct its own due diligence to verify any information and the Property's suitability for specific commercial purposes. Copyright information: G&B represents the intellectual property of G&B and its Digital Millennium Copyright Act.

**Goodale & Barbieri Company**  
818 West Riverside #300  
Spokane, WA 99201  
www.g-b.com

**Cory Barbieri** | Vice President  
509.344.4901 // cbarbieri@g-b.com  
**Bill Duffy** | Commercial & Leasing Manager  
509.344.4917 // bduffy@g-b.com