

# Miller Building

6031 Airport Way S, Seattle, WA 98108



Prime second-generation  
retail for lease

Unlock the potential of Seattle's oldest neighborhood, Georgetown blends historic charm with a thriving creative and industrial scene. The neighborhood is home to breweries, coffee roasters, art studios, furniture makers and more. Georgetown's location makes it an ideal setting for businesses seeking visibility and access to a diverse customer base.

Highlights:

- Rare Georgetown vacancy
- Second-generation space
- Charming historic Seattle neighborhood
- Ample street parking

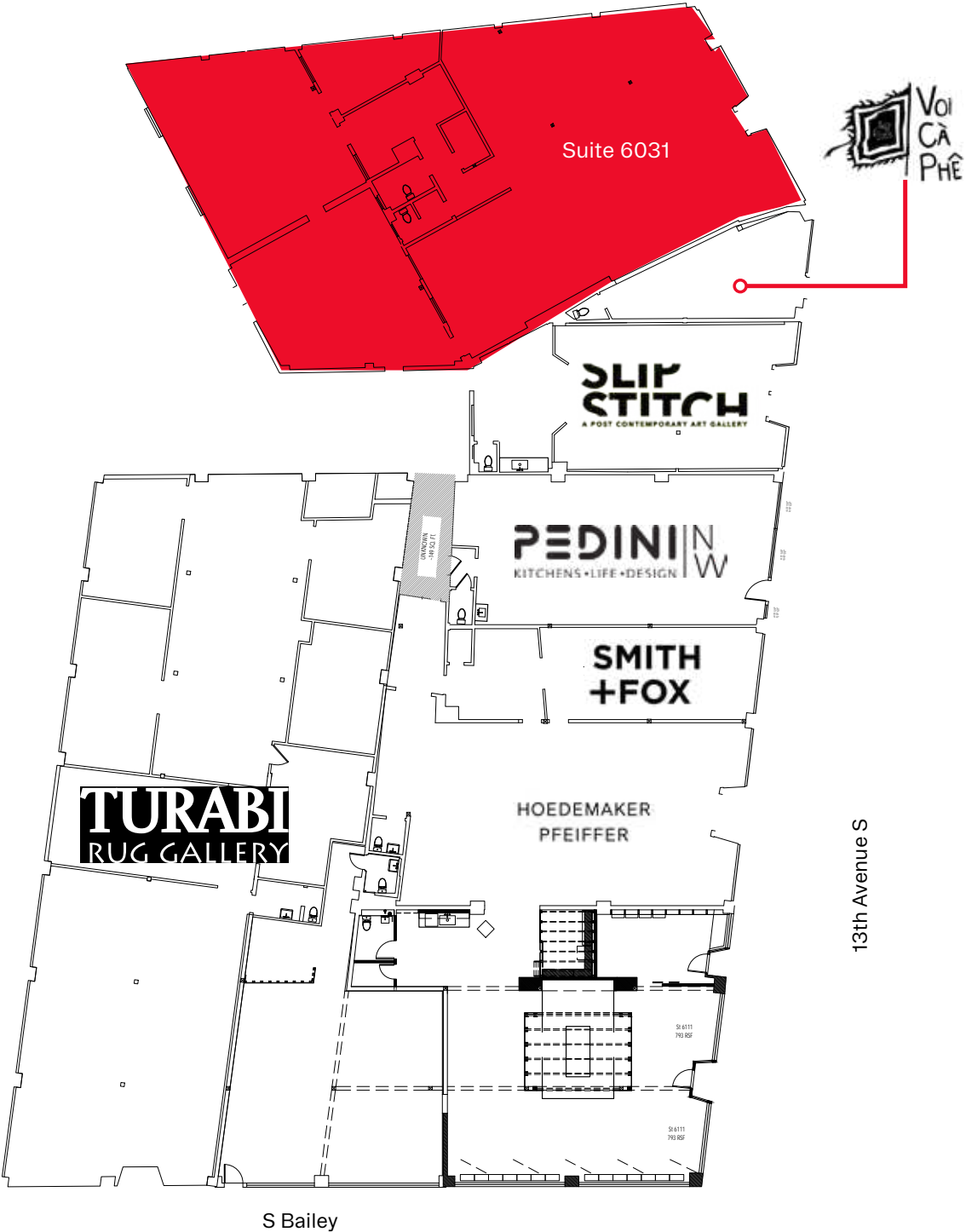


# SITE PLAN

Airport Way S

Available Space

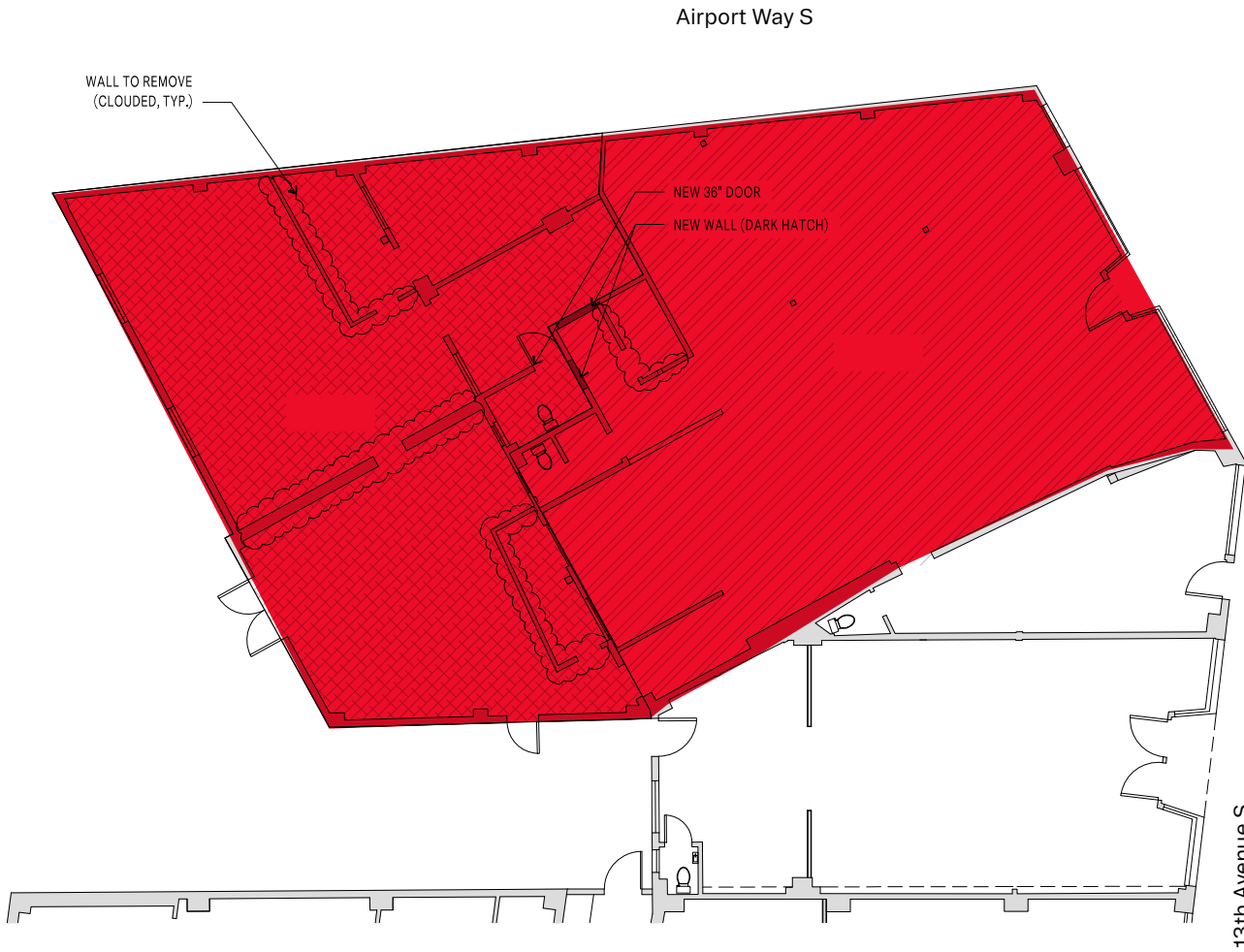
Suite 6031 - 4,270 SF



# FLOOR PLAN

Available Space

Suite 6031 - 4,270 SF







6031 Airport Way S, Seattle, WA 98108

**Avery Connell**

avery@wccommercialrealty.com  
206 475 9367

**Tiffini Connell**

tiffini@wccommercialrealty.com  
206 854 1925

**WCCR** | West Coast  
Commercial  
Realty

DISCLAIMER: The above information has been secured from sources believed to be reliable, however, no representations are made to its accuracy. Prospective tenants or buyers should consult their professional advisors and conduct their own independent investigation. Site plan and configuration are subject to change. Properties are subject to change in price and/or availability without notice. West Coast Commercial Realty, LLC



206 283 5212

wccommercialrealty.com