

Rainier Professional Plaza

Class A office space available with generous tenant improvement packages

18209 HWY 410, BONNEY LAKE, WA





Building & Monument Signage Available with Visibility from Hwy 410



\$28.00/SF, NNN



Second Floor: 973 - 5,701 SF



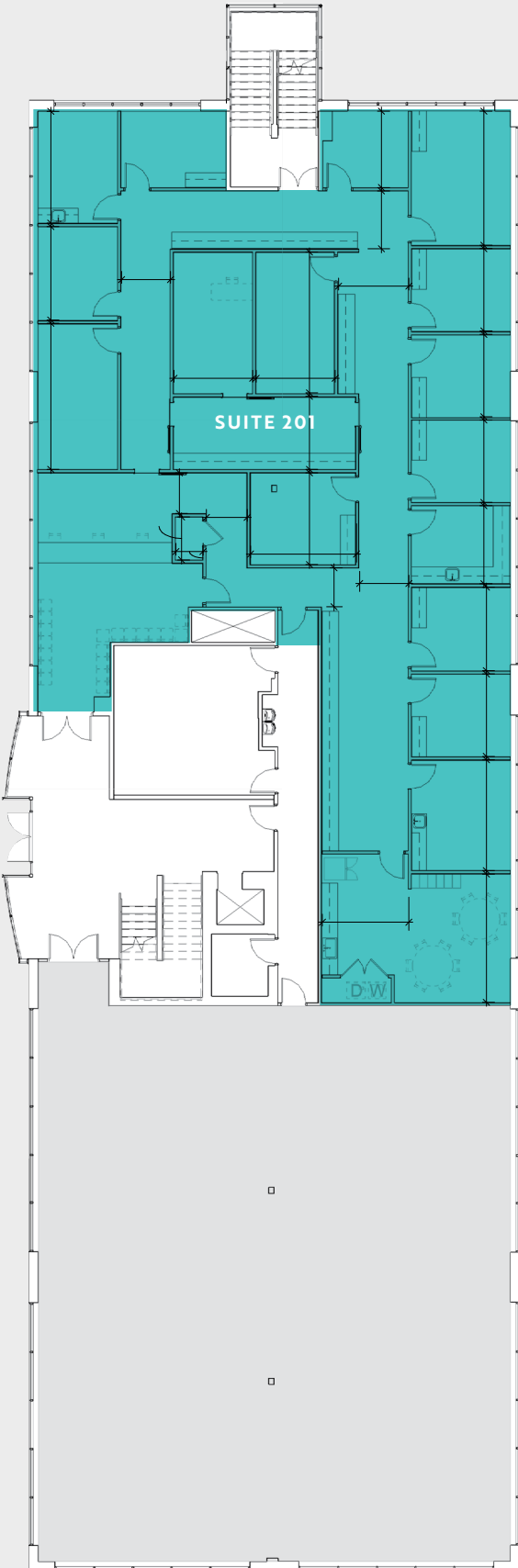
Building signage & monument signage



Visibility from Route 410, high density 41,000 VPD

2nd Floor

RAINIER PROFESSIONAL PLAZA



OPTION 1 | TEST FIT

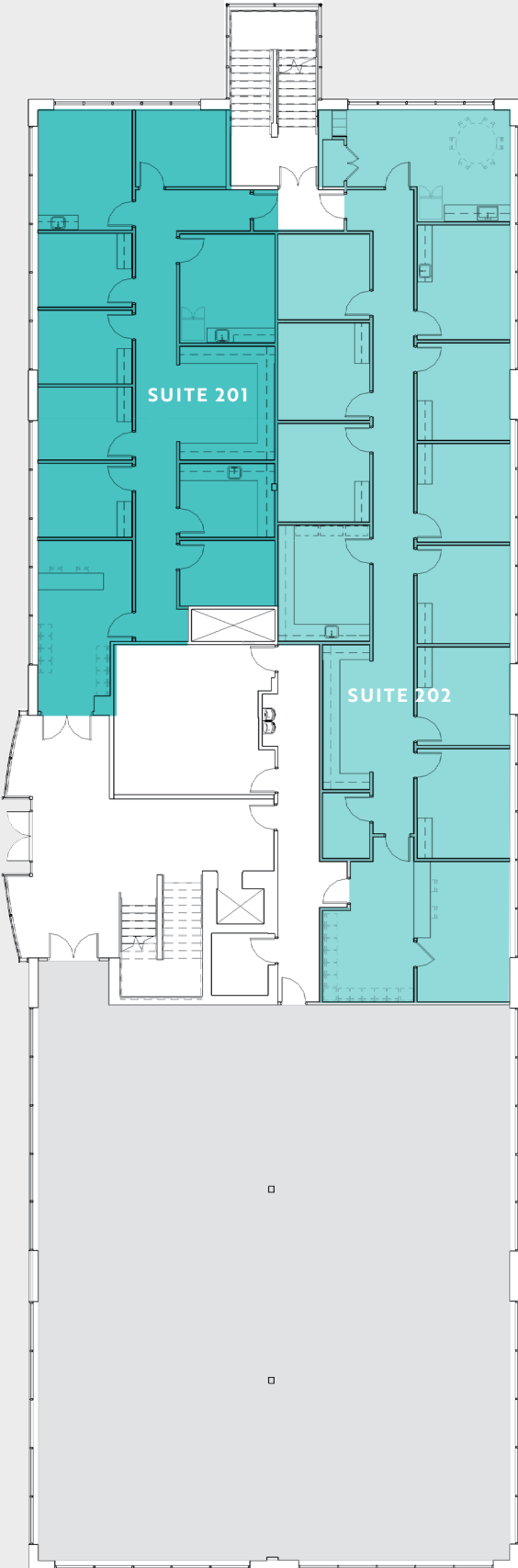
Suite	Size
201	5,701 SF

Availabilities



2nd Floor

RAINIER PROFESSIONAL PLAZA



OPTION 2 | TEST FIT

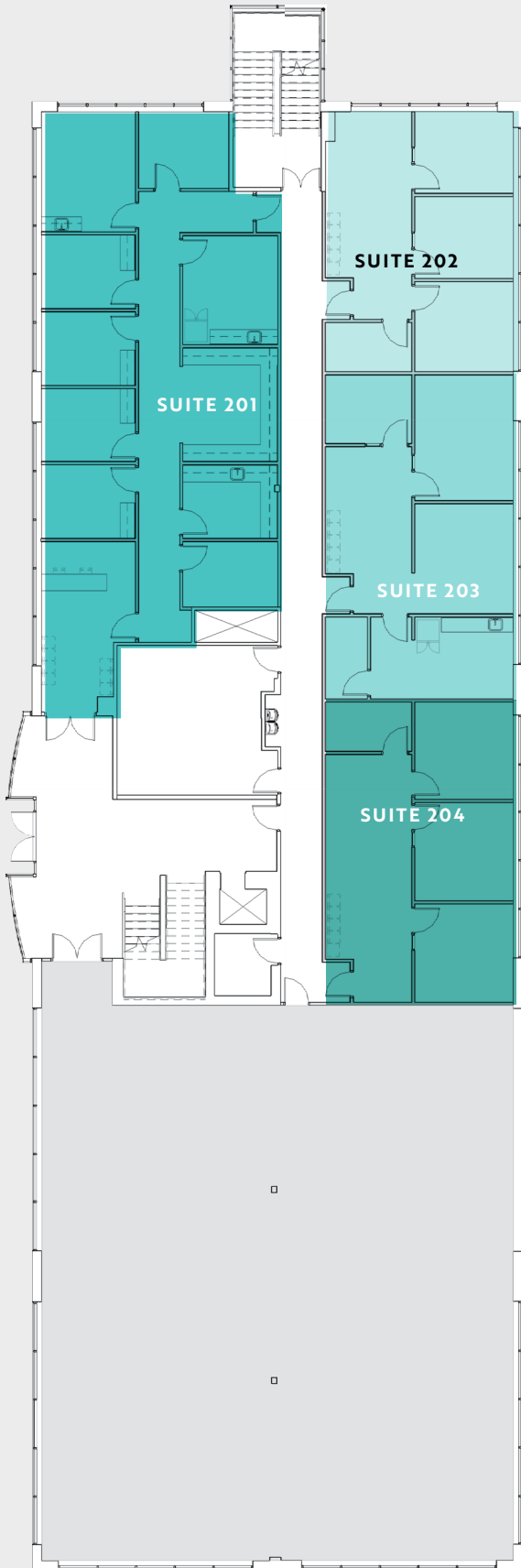
Suite	Size
201	2,285 SF
202	3,416 SF

Availabilities



2nd Floor

RAINIER PROFESSIONAL PLAZA



OPTION 3 | TEST FIT

Suite	Size
201	2,429 SF
202	973 SF
203	1,192 SF
204	1,107 SF

Availabilities



Photos

R
RAINIER DENTAL
Suite 300

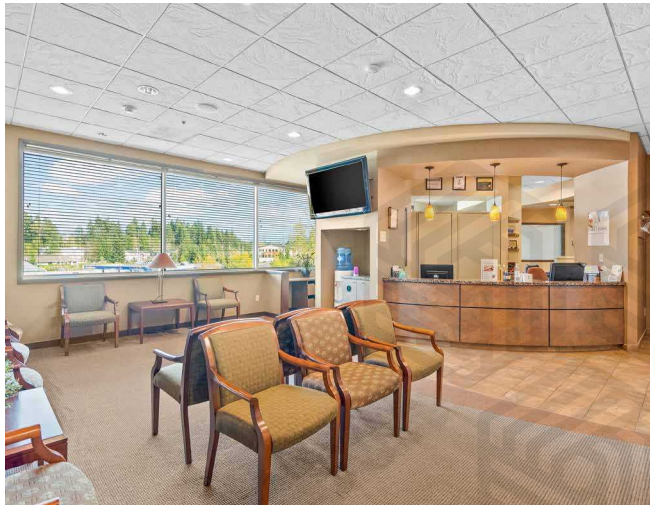
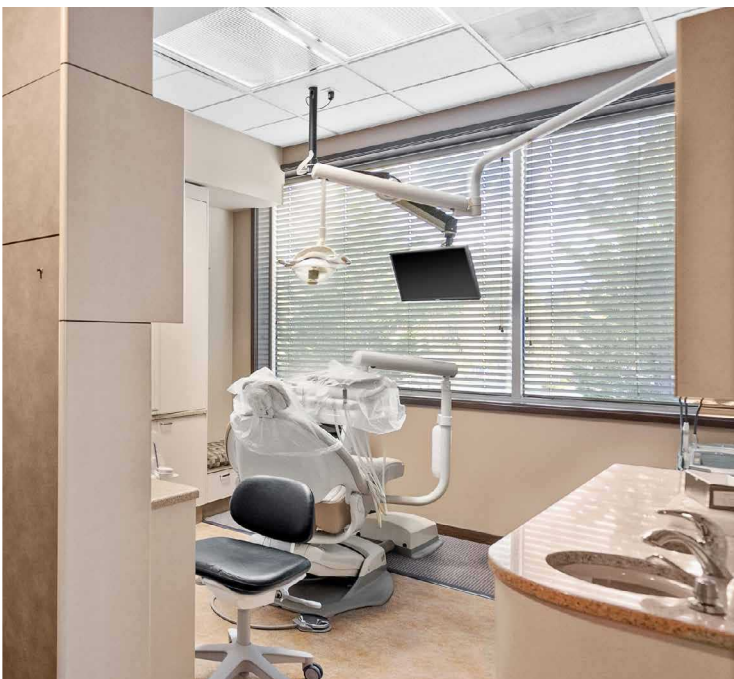
DALE L. VANDERSCHIEDEN, DDS
KAMRAN SHEMSHAKI, DMD
ANTHONY SPINELLI, DDS
NADA ALKESSI, DDS, BDS

NATASHA SUBANKS, RDH
ABBIGAIL ARMENDAREZ, RDH

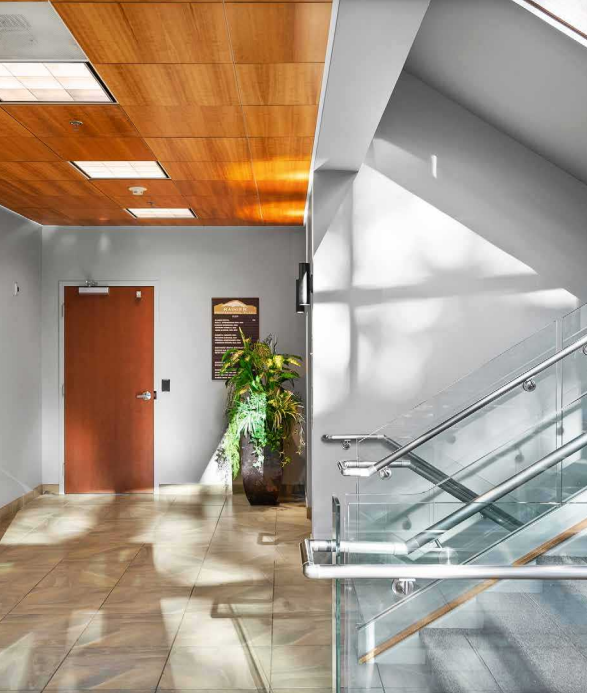
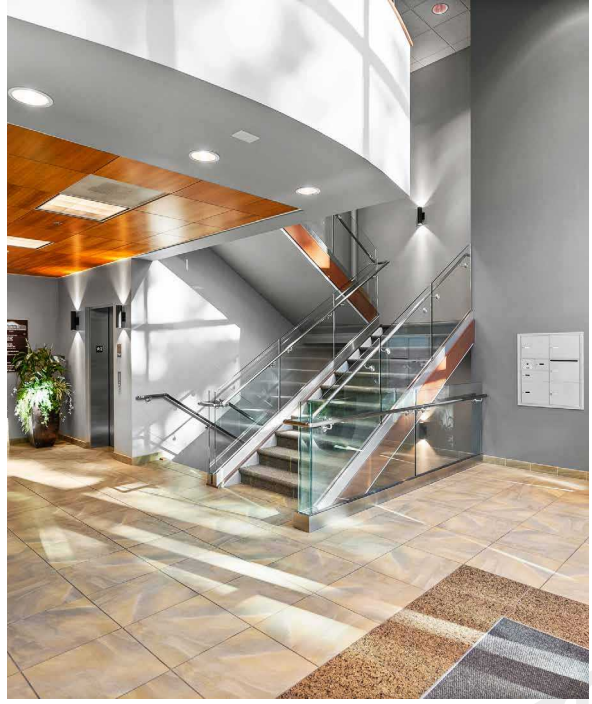
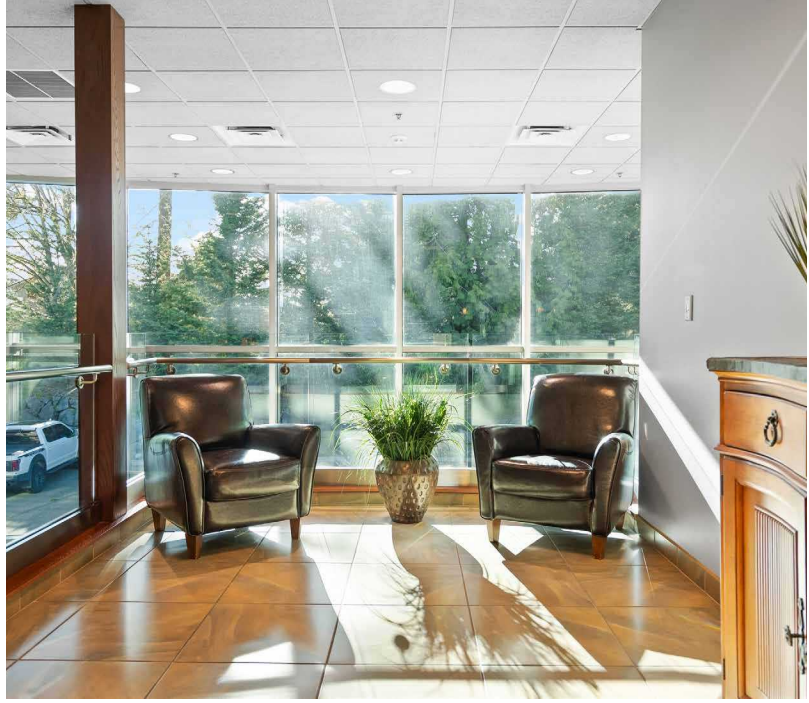
NORTHWEST DENTAL SPECIALISTS
EBRINCO KIM, DMD
BETSY ROCIO MOSQUERA, DDS, MS

EDWARD JONES 302
SHANE KLINGENSTEIN

DORNEY LAKE COUNSELING 304
SHANNON KING, MA LMHC
DAVID MELTON, MA LMFT
KAREN CRAIG, MA LMHC CDP



Photos



Photos





Rainier Professional Plaza

18209 HWY 410 | BONNEY LAKE, WA

DREW FRAME, SIOR

253.948.7032

drew.frame@kidder.com

RYAN KERSHAW

206.949.1334

ryan.kershaw@kidder.com



ROSEN HARBOTTLE
COMMERCIAL REAL ESTATE

Leasing by



**Kidder
Mathews**

This information supplied herein is from sources we deem reliable. It is provided without any representation, warranty, or guarantee, expressed or implied as to its accuracy. Prospective Buyer or Tenant should conduct an independent investigation and verification of all matters deemed to be material, including, but not limited to, statements of income and expenses. Consult your attorney, accountant, or other professional advisor.

KIDDER.COM