



# Trent 5615 E. Spokane Valley, WA.

Retail Site for Sale

**Mike King**  
**509-863-4853**

**\$1,500,000**



## Property Info:

- Three Parcels 61,585 SF ( 1.4 acres)
- Retail Center 4,896 SF
- Retail Coffee Bldg 664 SF
- Trent Ave & Fancher Rd NW Corner
- Price \$1,500,000



First Look Real Estate Commercial ~ Mike King ~ [king5098634853@gmail.com](mailto:king5098634853@gmail.com)

1003 E Trent Ave. Suite 150, Spokane, WA. 99202

# Trent 5615 E.

## Spokane Valley, WA.

### Retail and/or Office Space

Suite-B 1,496 SF  
Suite-C 1,632 SF } 3,119 SF

  
**FIRST LOOK**  
— REAL ESTATE —  
COMMERCIAL

**Mike King**  
**509-863-4853**



### Property Info:

- Combined 3,119 SF Available
- Retail Suite-B Size 1,496 SF
- Rate \$2,369/Mo NNN
- Office Suite-C Size 1,623 SF
- Rate \$22,584/ Mo NNN
- Power 3-phase each Suite
- Electrical 200 Amp each Suite



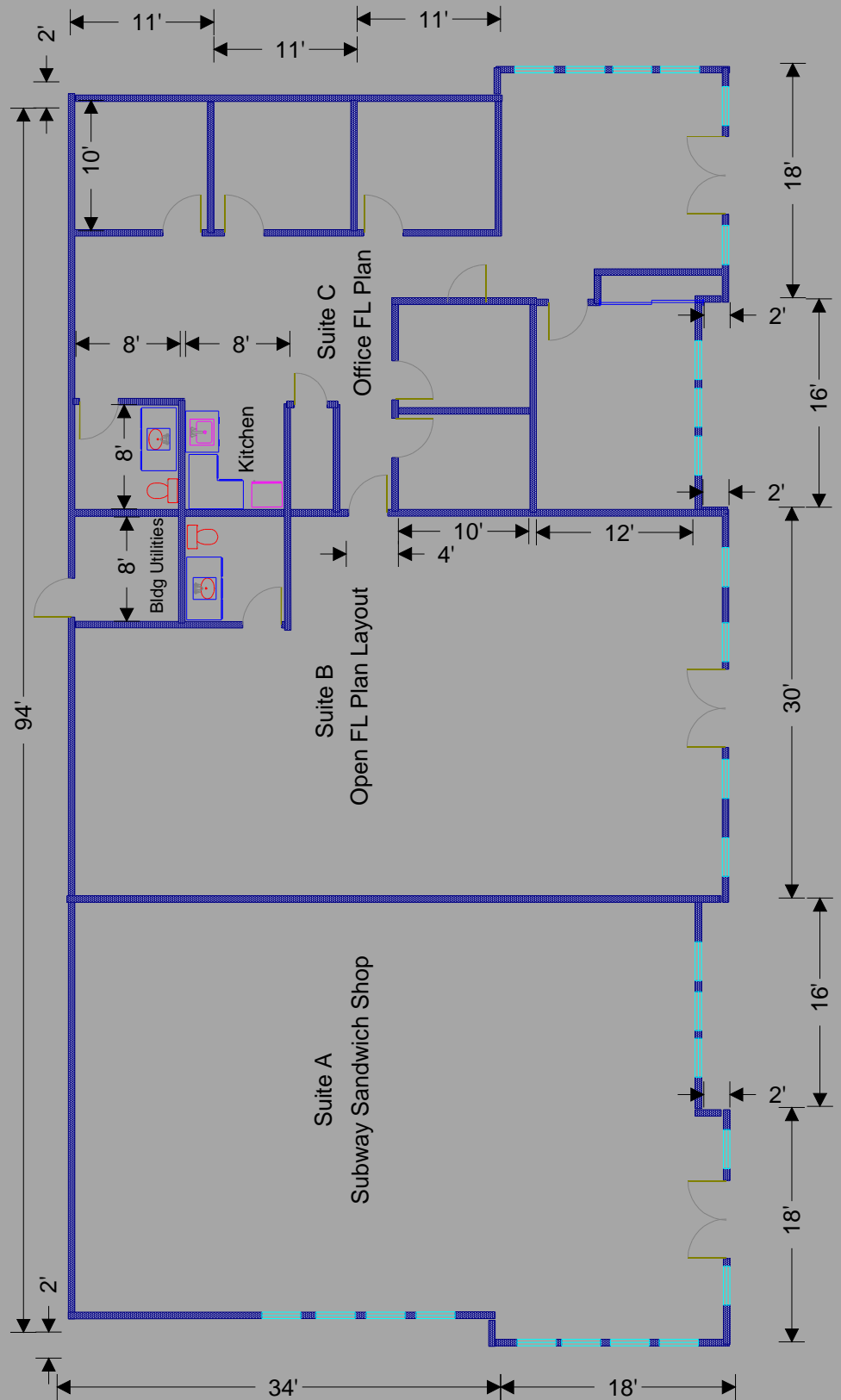
First Look Real Estate Commercial ~ Mike King ~ king5098634853@gmail.com

1003 E Trent Ave. Suite 150, Spokane, WA. 99202

**Realtors FL Plan - Verify all Dimensions**

TRENT 5615 E. Spokane, WA

Realtors FL Plan - Verify all Dimensions



**FIRST LOOK**  
 — REAL ESTATE —  
 COMMERCIAL

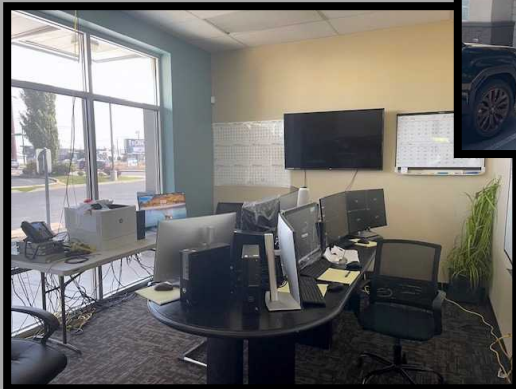
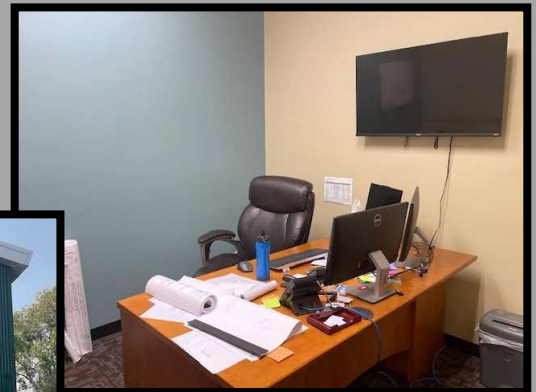
**Mike King**  
**509-863-4853**



Subway Retail Center Available 4,896 SF



**Suite C**  
**Office Photos**



**The Neighborhood**



Daily Habit Coffee



Zipp's Drive-In



Office Neighbor



Retail Parking Area

First Look Real Estate Commercial ~ Mike King ~ [king5098634853@gmail.com](mailto:king5098634853@gmail.com)

1003 E Trent Ave. Suite 150, Spokane, WA. 99202