

Trent 5615 E.

Spokane Valley, WA.

Retail and/or Office Space

Suite-A 1,739 SF

Suite-B 1,581 SF

Suite-C 1,739 SF

5,060 SF


FIRST LOOK
— REAL ESTATE —
COMMERCIAL

Mike King
509-863-4853



Property Info:

- Three Suites Each
- Retail Suite-A Size 1,793 SF
- Rate \$3,479/ Mo NNN (\$24.00 SF)
- Retail Suite-B Size 1,581SF
- Rate \$2,372/Mo NNN (\$18.00 SF)
- Office Suite-C Size 1,793 SF
- Rate \$3,288/ Mo NNN (\$18.00 SF)
- Power 3-phase each Suite
- Electrical 200 Amp each Suite

Combined SF Available 5,060 SF



First Look Real Estate Commercial ~ Mike King ~ king5098634853@gmail.com

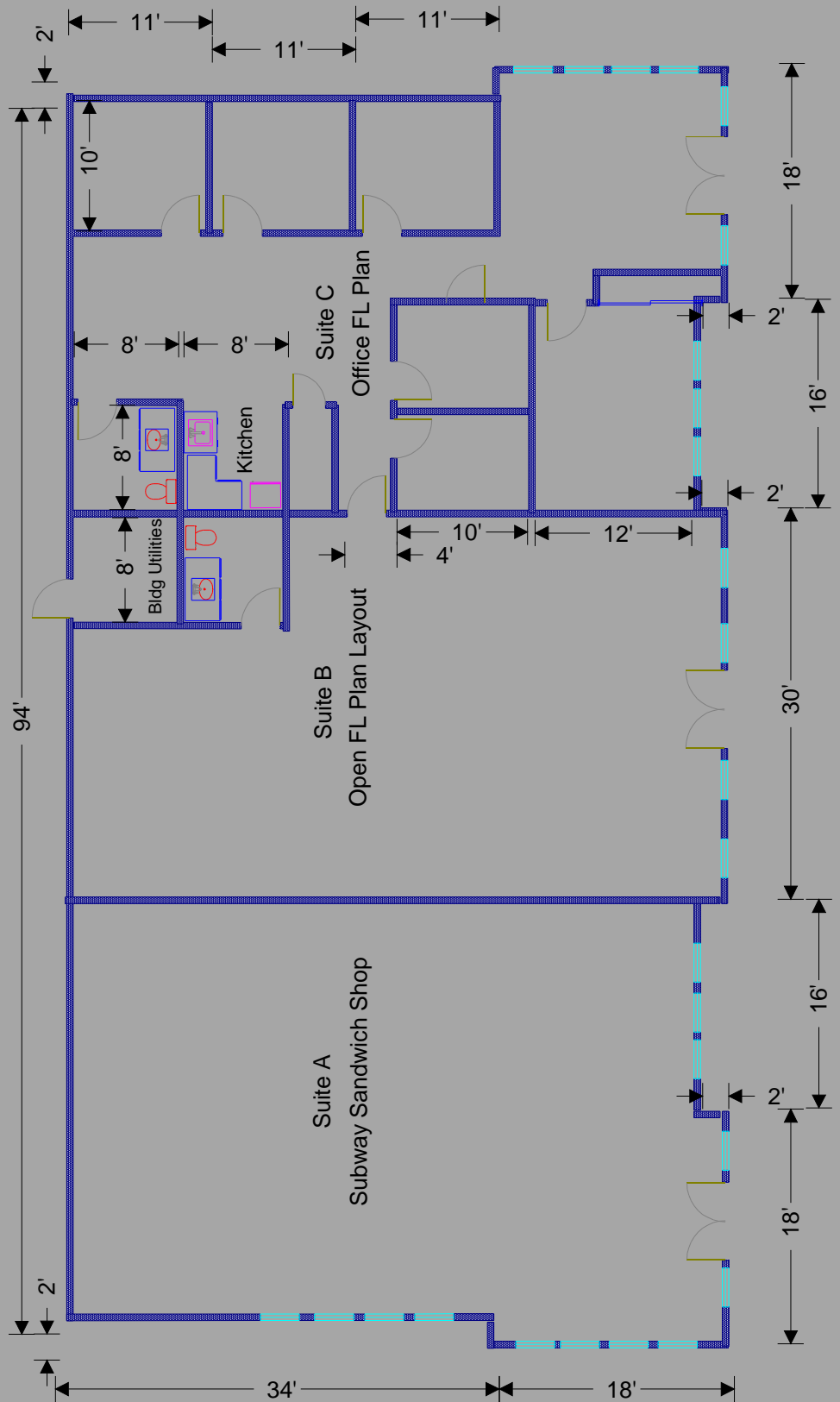
1003 E Trent Ave. Suite 150, Spokane, WA. 99202

Mike King
509-863-4853

Realtors FL Plan - Verify all Dimensions

TRENT 5615 E. Spokane, WA

Realtors FL Plan - Verify all Dimensions

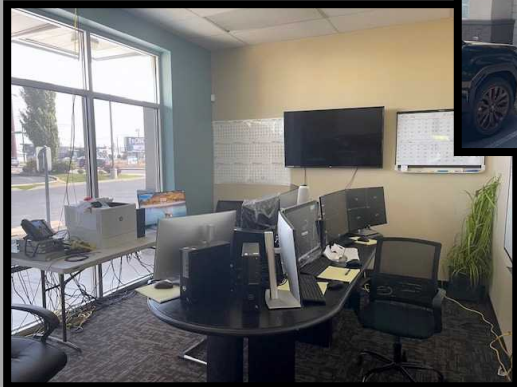



FIRST LOOK
— REAL ESTATE —
COMMERCIAL

Mike King
509-863-4853



**Suite C
Office Photos**



The Neighborhood



First Look Real Estate Commercial ~ Mike King ~ king5098634853@gmail.com
1003 E Trent Ave. Suite 150, Spokane, WA. 99202