



Mike King
509-863-4853

Trent 5615 E.

Spokane Valley, WA.

Retail Site for Sale

\$1,500,000



Property Info:

- Three Parcels 61,585 SF (1.4 acres)
- Retail Center 4,896 SF
- Retail Coffee Bldg 664 SF
- Trent Ave & Fancher Rd NW Corner
- Price \$1,500,000



First Look Real Estate Commercial ~ Mike King ~ king5098634853@gmail.com

1003 E Trent Ave. Suite 150, Spokane, WA. 99202

Trent 5615 E.

Spokane Valley, WA.

Retail and/or Office Space

Suite-B 1,496 SF
Suite-C 1,632 SF } 3,119 SF


FIRST LOOK
— REAL ESTATE —
COMMERCIAL

Mike King
509-863-4853



Property Info:

- Combined 3,119 SF Available
- Retail Suite-B Size 1,496 SF
- Rate \$2,369/Mo NNN
- Office Suite-C Size 1,623 SF
- Rate \$22,584/ Mo NNN
- Power 3-phase each Suite
- Electrical 200 Amp each Suite



First Look Real Estate Commercial ~ Mike King ~ king5098634853@gmail.com

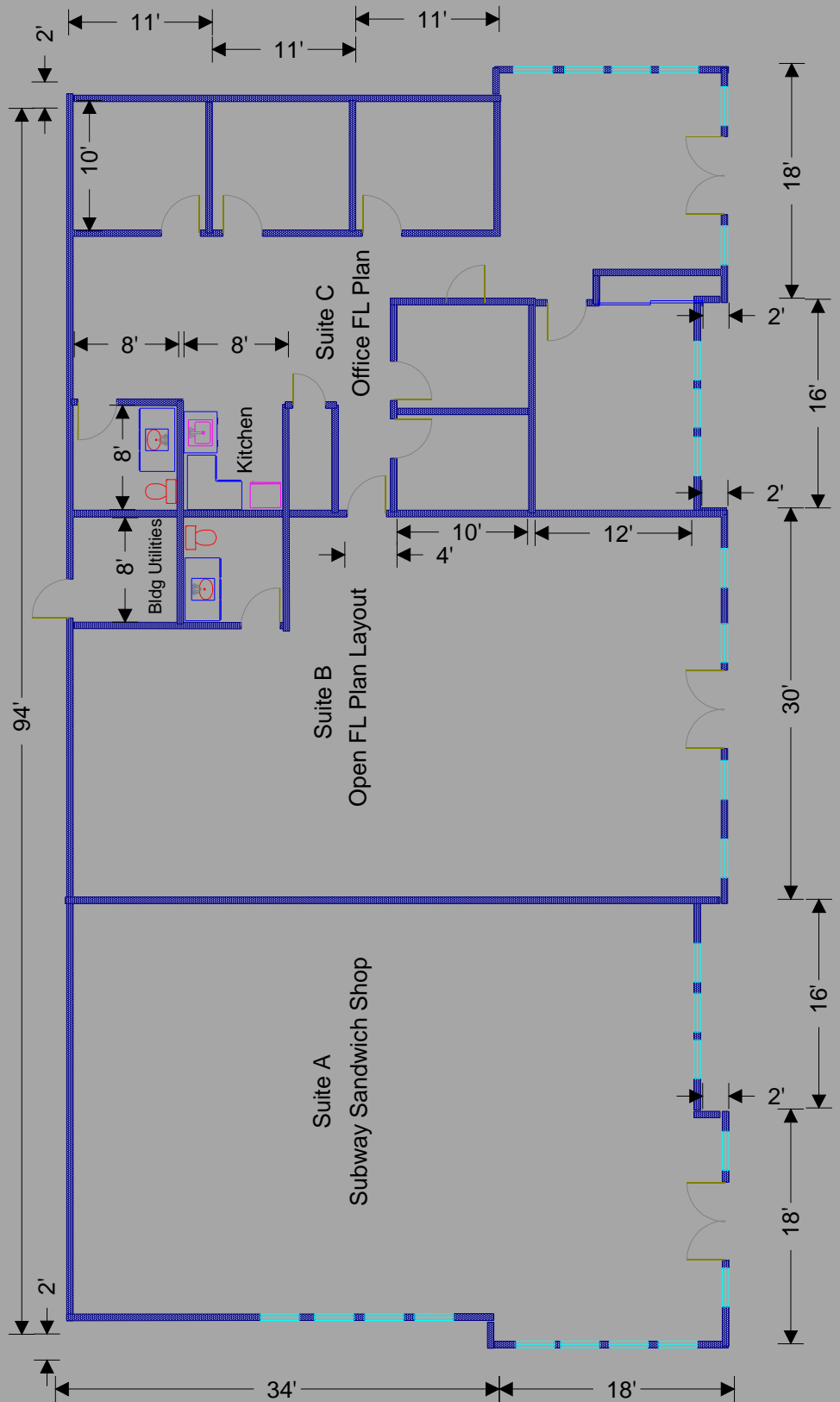
1003 E Trent Ave. Suite 150, Spokane, WA. 99202

Mike King
 509-863-4853

Realtors FL Plan - Verify all Dimensions

TRENT 5615 E. Spokane, WA

Realtors FL Plan - Verify all Dimensions



FIRST LOOK
— REAL ESTATE —
COMMERCIAL

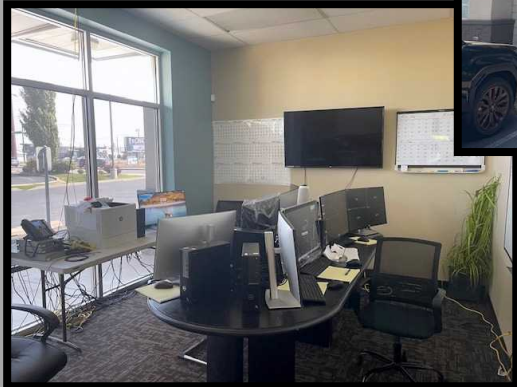
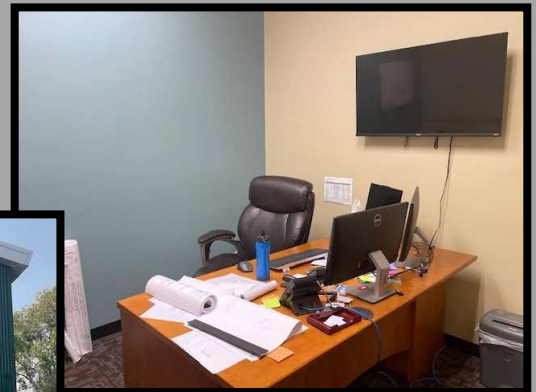
Mike King
509-863-4853



Subway Retail Center Available 4,896 SF



Suite C
Office Photos



The Neighborhood



Daily Habit Coffee



Zipp's Drive-In



Office Neighbor



Retail Parking Area

First Look Real Estate Commercial ~ Mike King ~ king5098634853@gmail.com

1003 E Trent Ave. Suite 150, Spokane, WA. 99202