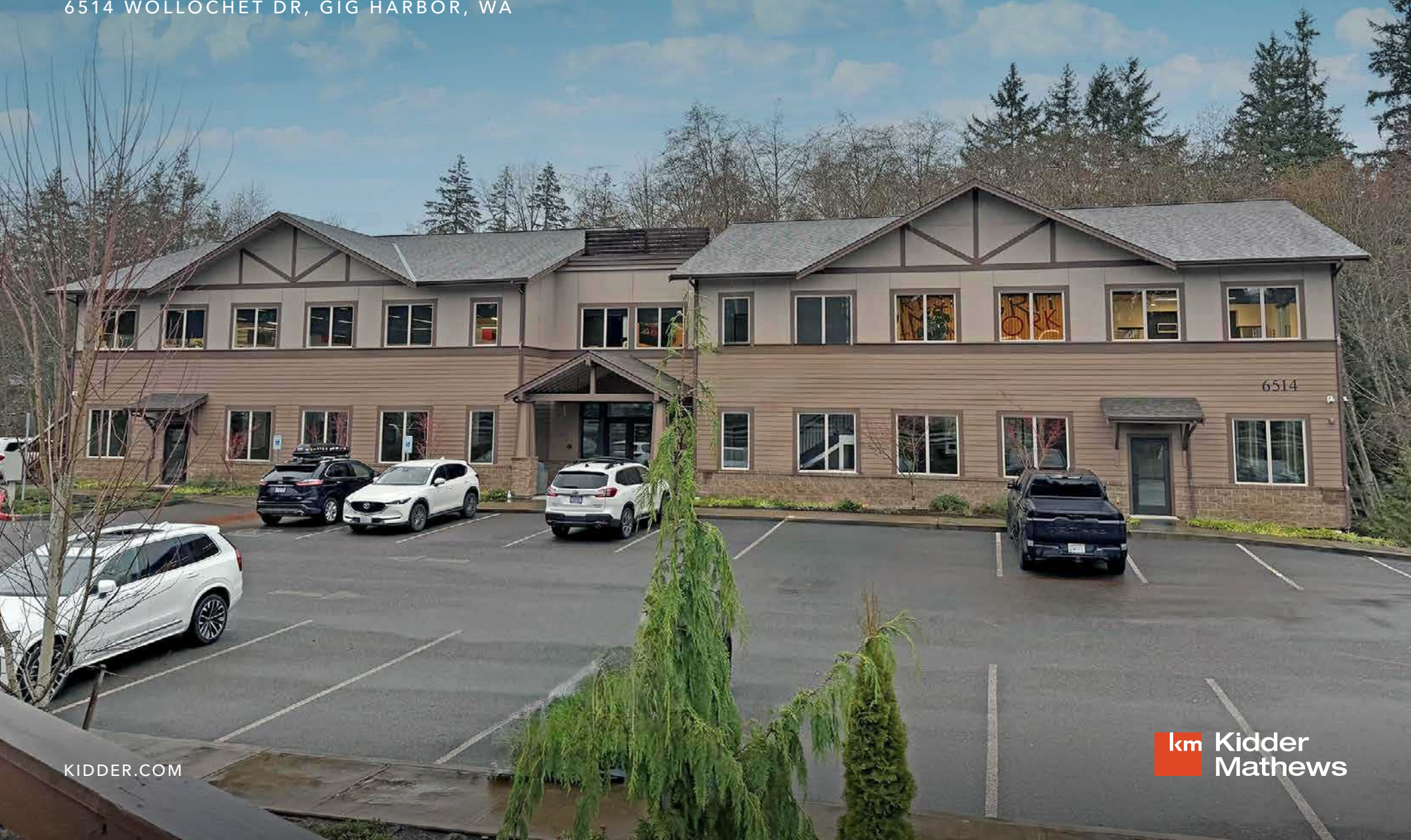


FOR LEASE

WOLLOCHET OFFICE BUILDING

6514 WOLLOCHET DR, GIG HARBOR, WA



WOLLOCHET OFFICE BUILDING

New construction office space located just off the Wollochet Drive exit on Highway 16 in Gig Harbor

The property offers flexible office space designed to accommodate professional and medical tenants. Space can be demised to meet specific operational needs and includes excellent visibility, monument signage opportunities, easy access to Downtown Gig Harbor and Uptown Shopping Center, and a rear service/garage door well-suited for additional office and/or storage space.

WOLLOCHET
OFFICE BUILDING

GARAGE

AVAILABLE FOR LEASE

KIDDER MATHEWS

FLOOR PLAN

6,821 SF

SUITE 100

3,250 SF

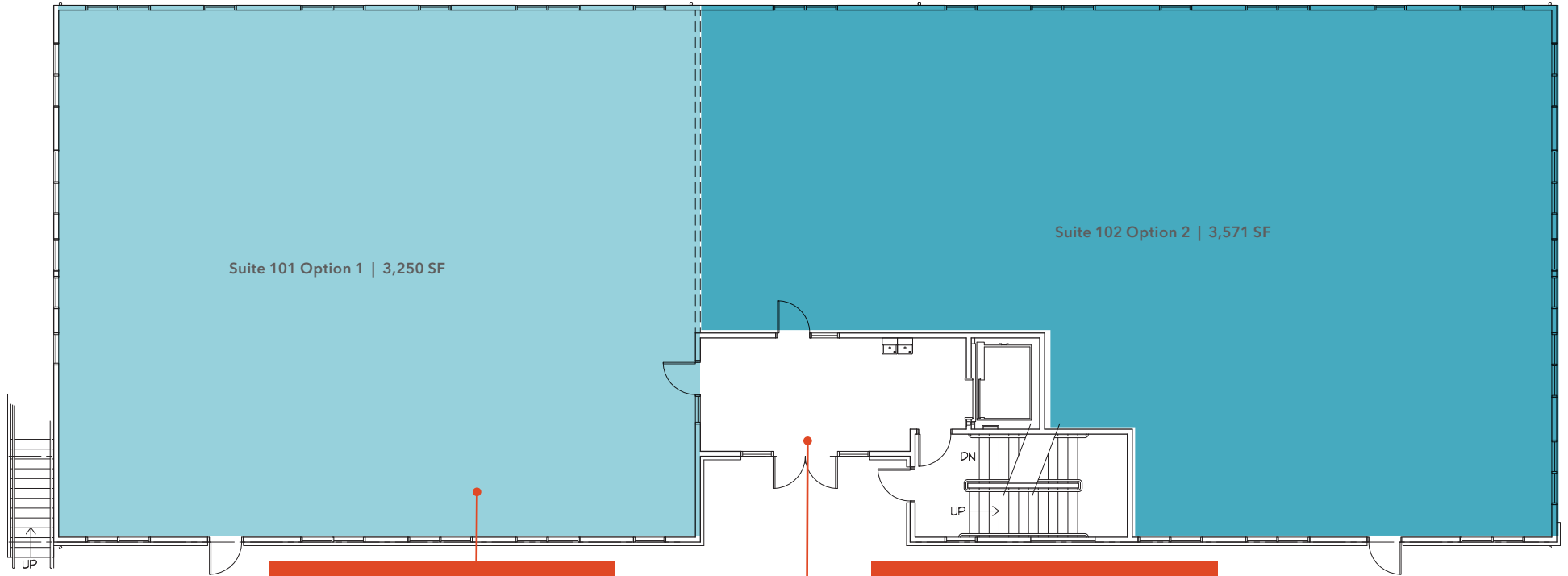
SUITE 101

3,571 SF

SUITE 102

\$24.00

PER SF



SUITE 101



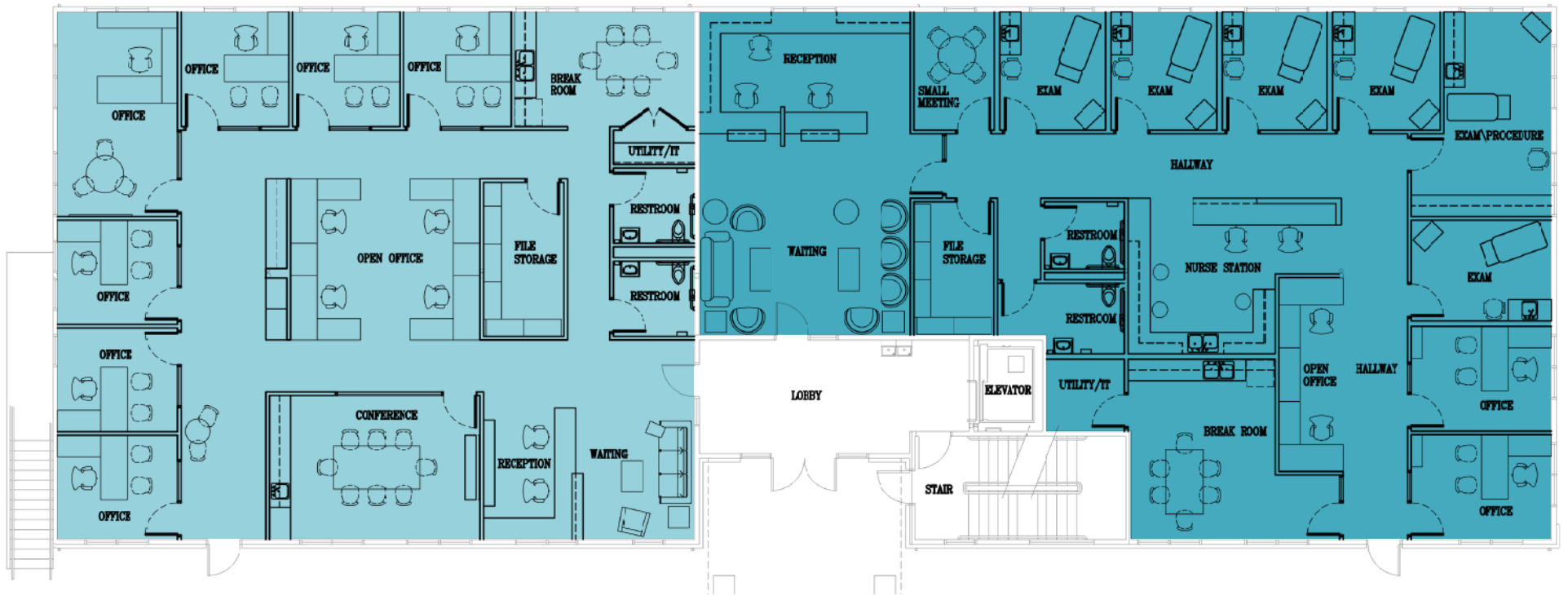
COMMON AREA



TEST FIT FLOOR PLAN

Demise Option 1 | Suite 101 3,250 SF

Demise Option 2 | Suite 102 3,571 SF



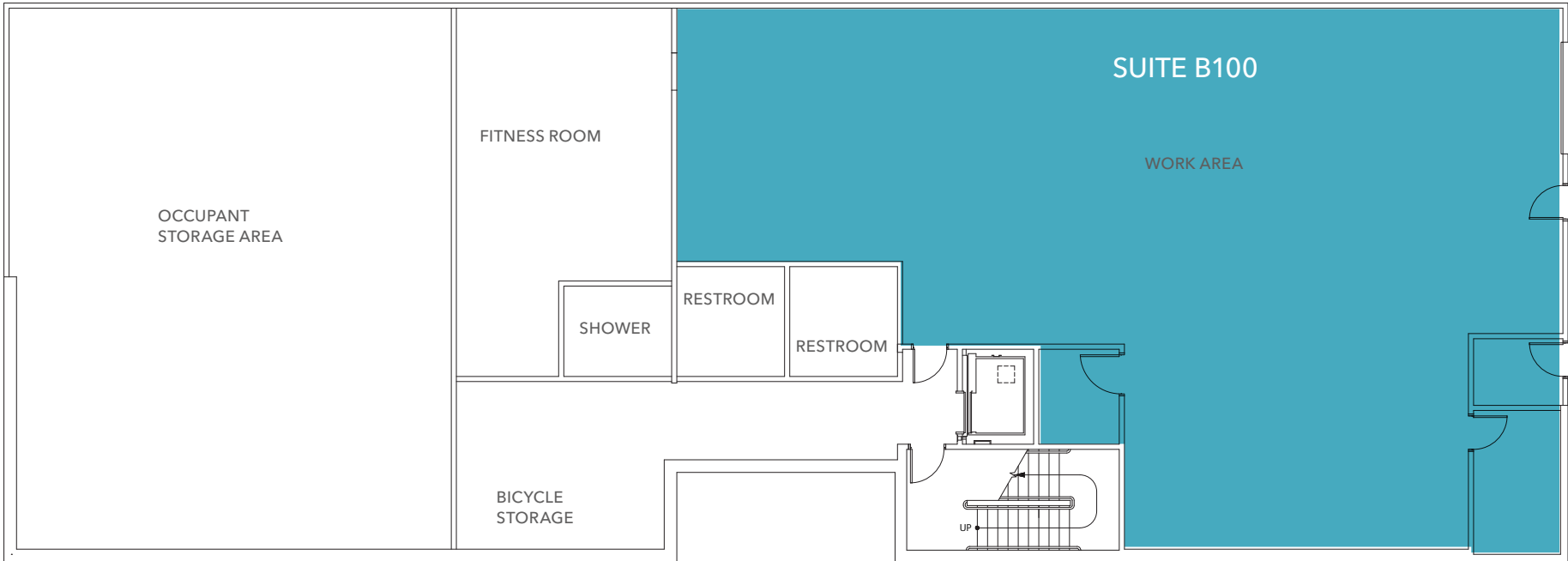
BASEMENT FLOOR PLAN

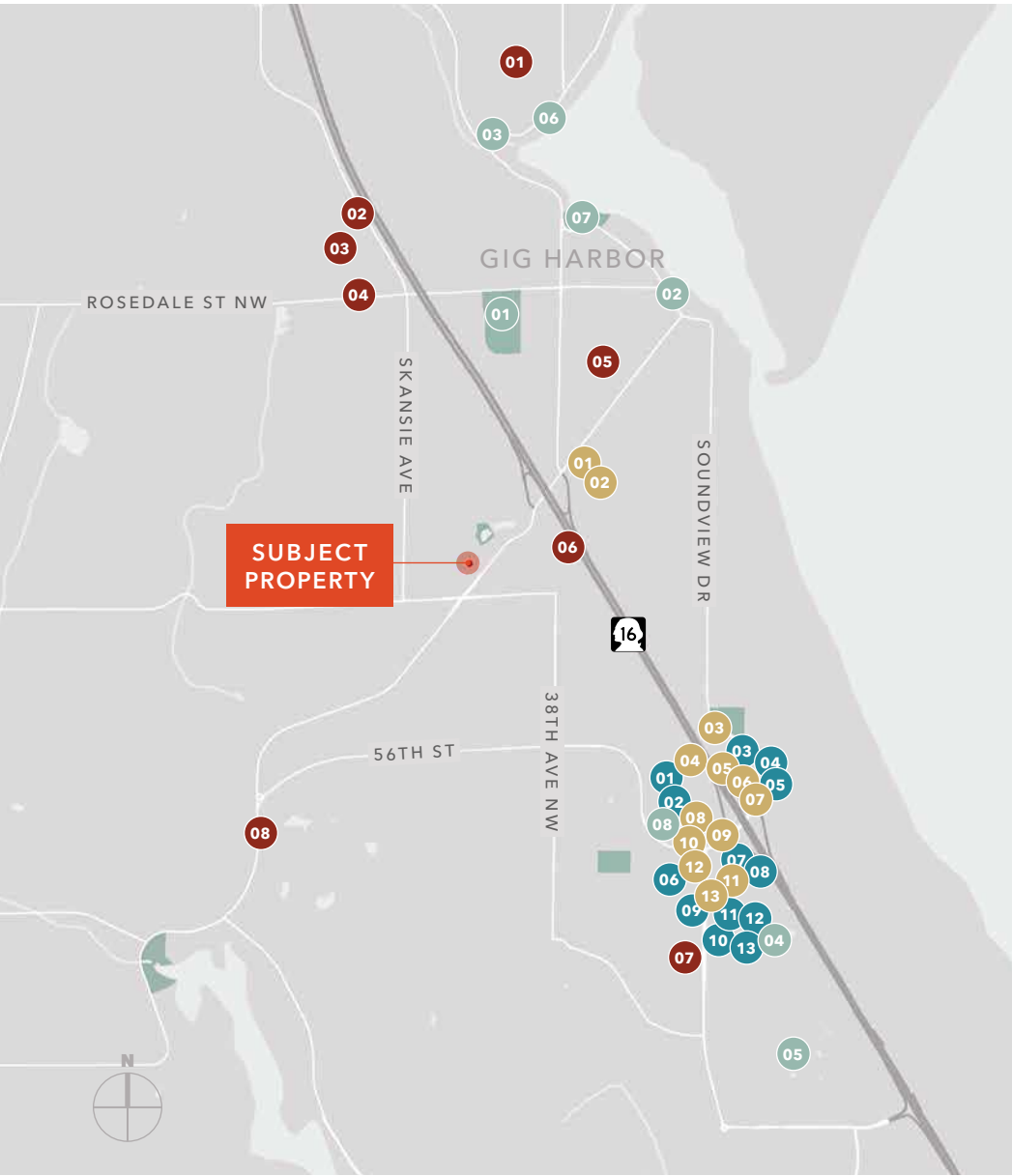
3,497 SF

SUITE B100

CALL

BROKER FOR RATE





NEARBY AMENITIES

RESTAURANTS & BARS

- 01 Burger King
- 02 Starbucks
- 03 The Original Pancake House
- 04 Papa John's
- 05 Carl's Jr
- 06 McDonald's
- 07 Round Table
- 08 Dairy Queen
- 09 KFC
- 10 Applebee's
- 11 Chipotle
- 12 Jersey Mike's
- 13 Panera

GROCERIES & SHOPS

- 01 Fred Meyers
- 02 Petsmart
- 03 Goodwill
- 04 Ross
- 05 Gamestop
- 06 Rite Aid
- 07 Kohl's
- 08 Safeway
- 09 UPS
- 10 Marshalls
- 11 SOMA
- 12 Ann Taylor Loft
- 13 Chico's

SCHOOLS

- 01 Harbor Ridge Middle School
- 02 Henderson Bay High School
- 03 Pioneer Elementary
- 04 Gig Harbor High School
- 05 St. Nicolas Catholic School
- 06 Arletta Montessori
- 07 Hosanna Christian School
- 08 Artondale Elementary

ENTERTAINMENT & PARKS

- 01 Wilkinson Farm Park
- 02 Sounview Forest
- 03 Donkey Creek Park
- 04 Galaxy Theatres IMAX
- 05 Madrona Links Golf Course
- 06 Harbor History Museum
- 07 Ancich Waterfront
- 08 Ocean5 Bowling

WOLLOCHET OFFICE BUILDING

Exclusively leased by

DREW FRAME, SIOR
Senior Vice President
253.948.7032
drew.frame@kidder.com

RYAN KERSHAW
Associate
206.949.1334
ryan.kershaw@kidder.com

KIDDER.COM

This information supplied herein is from sources we deem reliable. It is provided without any representation, warranty, or guarantee, expressed or implied as to its accuracy. Prospective Buyer or Tenant should conduct an independent investigation and verification of all matters deemed to be material, including, but not limited to, statements of income and expenses. Consult your attorney, accountant, or other professional advisor. All Kidder Mathews designs are the sole property of Kidder Mathews. Branded materials and layouts are not authorized for use by any other firm or person.

