

**HARBOR
REALTY
ADVISORS**

COMMERCIAL SPACE FOR LEASE

BAYVIEW PLAZA

3312 Rosedale ST NW Gig Harbor, WA 98335

GARY GALLINGER
253.988.3367
GARY@HARBORRA.COM

FISCHER GALLINGER
253.330.1318
FISCHER@HARBORRA.COM



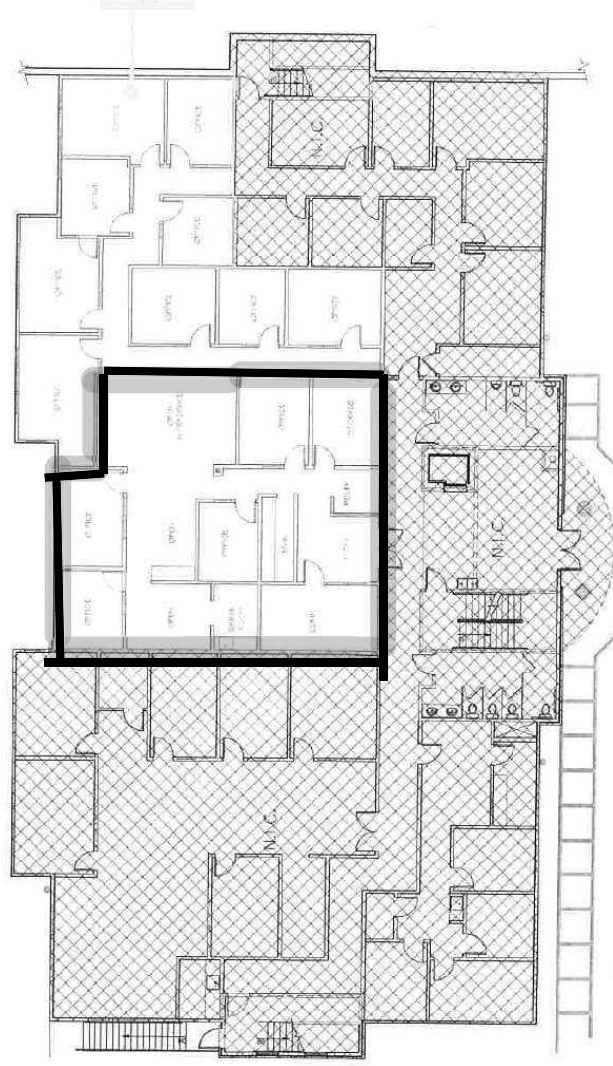
Harbor Realty Advisors...
...your commercial real estate edge.

COMMERCIAL SPACE FOR LEASE

- LOCATED IN HEART OF DOWNTOWN GIG HARBOR
- SPACE IS LOCATED RIGHT OFF THE MAIN LOBBY
- 5 OFFICES, KITCHENETTE, & OPEN AREA
- 1 CONFERENCE SPACE
- ADA ACCESSIBLE

SUITE TOTAL RSF

102 2252



GARY GALLINGER
253.988.3367
GARY@HARBORRA.COM

FISCHER GALLINGER
253.330.1318
FISCHER@HARBORRA.COM

Harbor Realty Advisors...
...your commercial real estate edge.