

FOR LEASE

COMMENCEMENT PLAZA PAVILION

820 A ST, TACOMA, WA

STANDALONE
BUILDING

S 9TH ST

A ST

KIDDER.COM

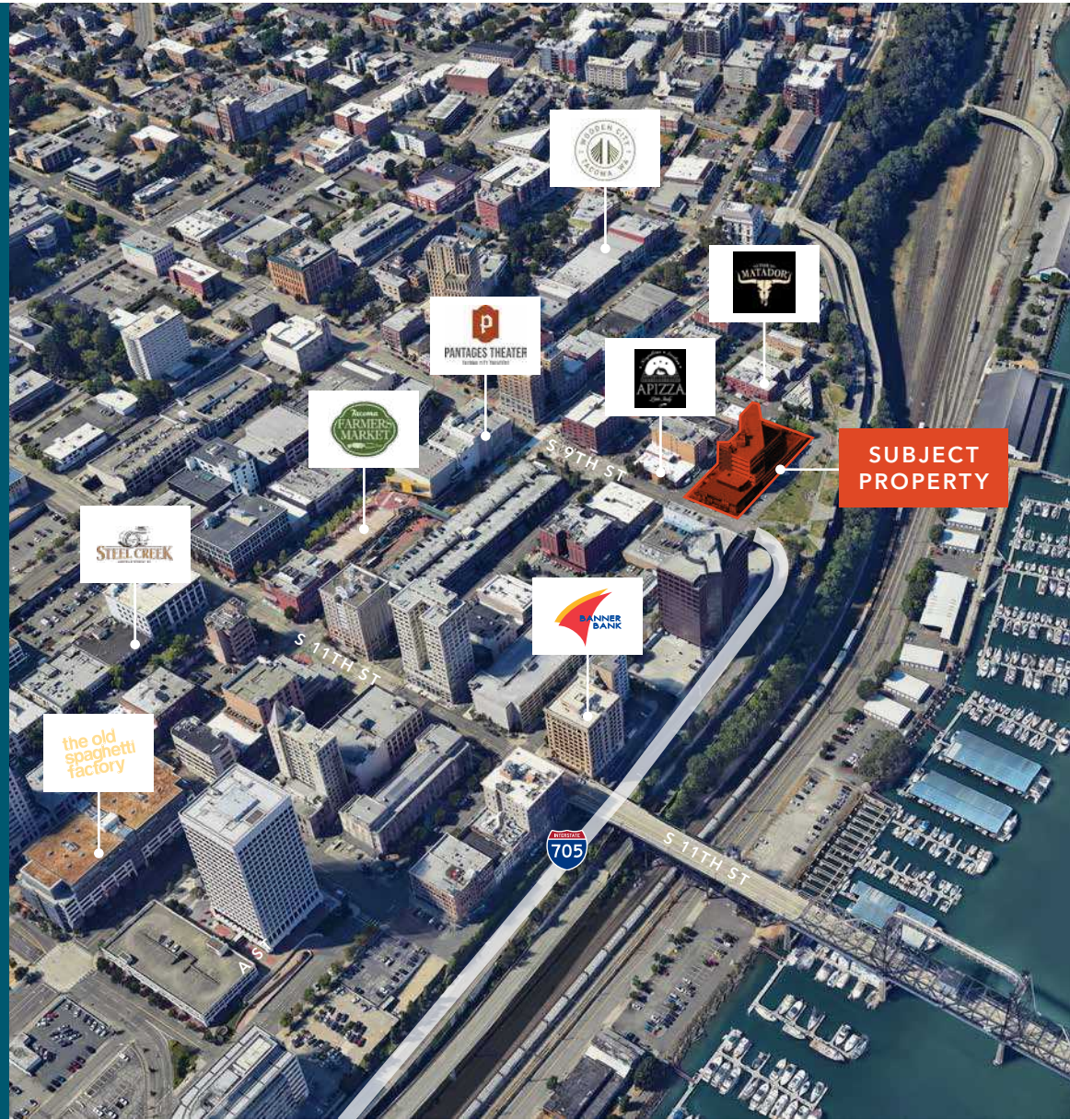
km Kidder
Mathews



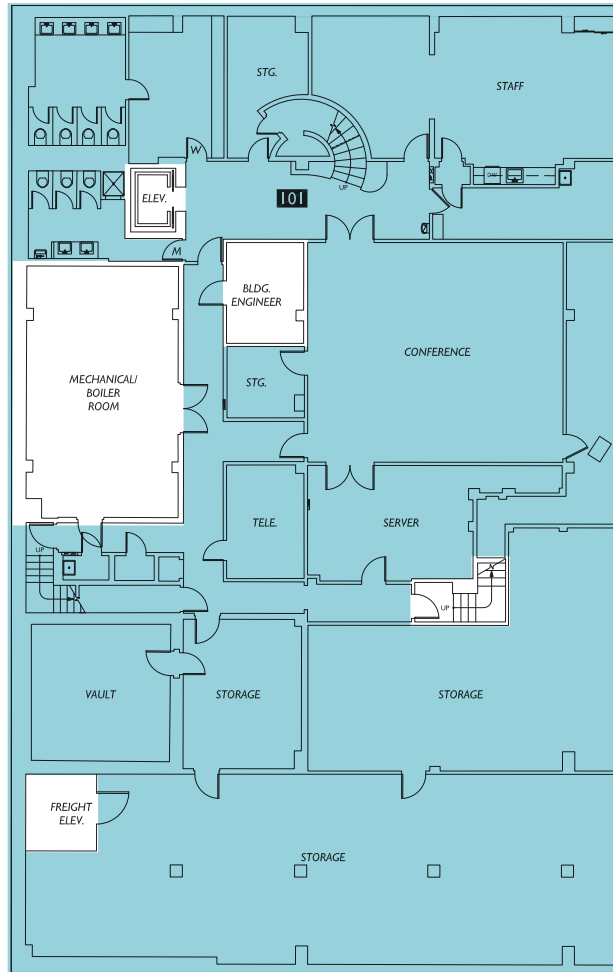
Recently Renovated with Water Views

PROPERTY OVERVIEW

| | |
|-------------------|--|
| RATE | See floor plans |
| LOWER LEVEL | 8,219 SF |
| SUITE 101 | 7,643 SF |
| SUITE 220 | 3,737 SF |
| SUITE 101 & 220 | Contiguous standalone opportunity |
| AMENITIES | On site security, structured parking and unobstructed views of Commencement Bay |
| LOCATION | 9th and A St with direct access to 705 and I-5 |
| SURROUNDING AREAS | Metro Bus Line and Link Light Rail 1 block away. Walking distance to renowned bars and restaurants |



LOWER LEVEL - STANDALONE RETAIL/OFFICE



8,219 SF

AVAILABLE

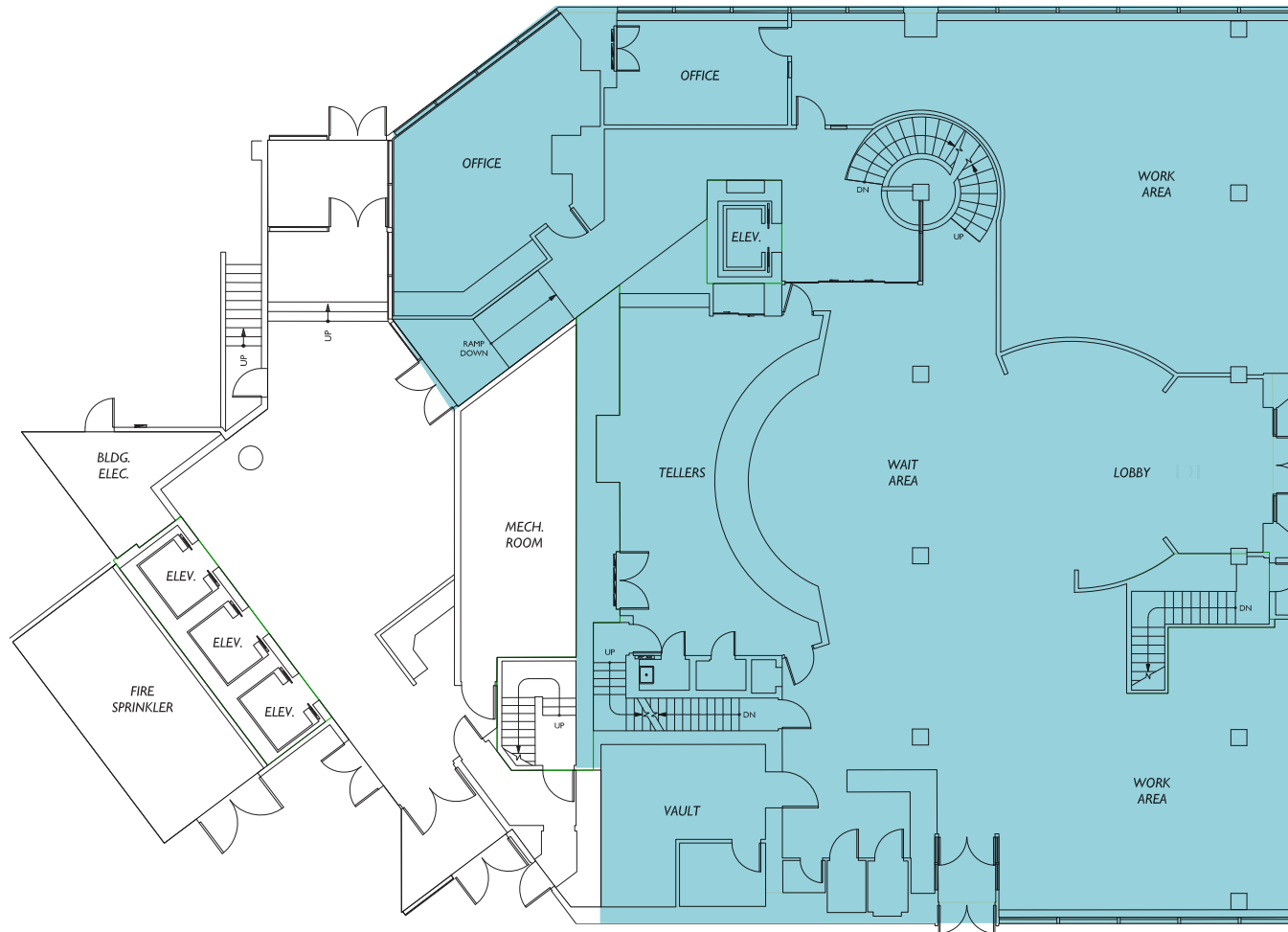
19,599 SF

ENTIRE BUILDING

\$18.00

PSF, FULL SERVICE

SUITE 101 - STANDALONE RETAIL/OFFICE



7,643 SF

AVAILABLE

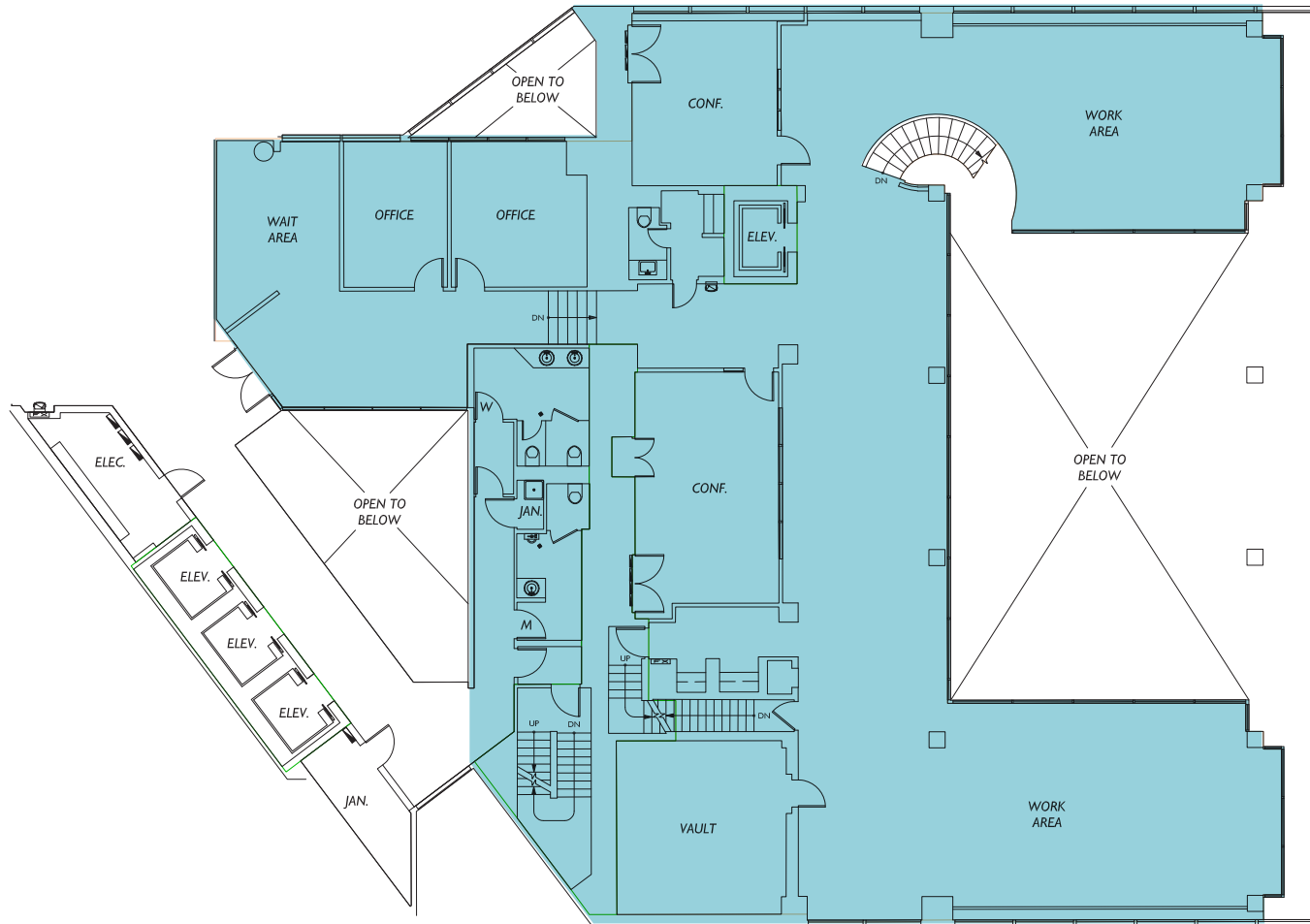
RETAIL EXPOSURE

DIRECT ACCESS

\$28.00

PSF, FULL SERVICE

SUITE 220 - STANDALONE RETAIL/OFFICE



3,737 SF

AVAILABLE

11,380 SF

COMBINE SUITE 101 & 220

\$28.00

PSF, FULL SERVICE



Exclusively listed by

DREW FRAME, SIOR
Senior Vice President
253.948.7032
drew.frame@kidder.com

RYAN KERSHAW
Associate
206.949.1334
ryan.kershaw@kidder.com

KIDDER.COM