

SODO - 6th & Lander

2450 6th Ave S., Units 29 & 30

Seattle, WA 98134



FOR LEASE

Industrial Warehouse

CONTACT:

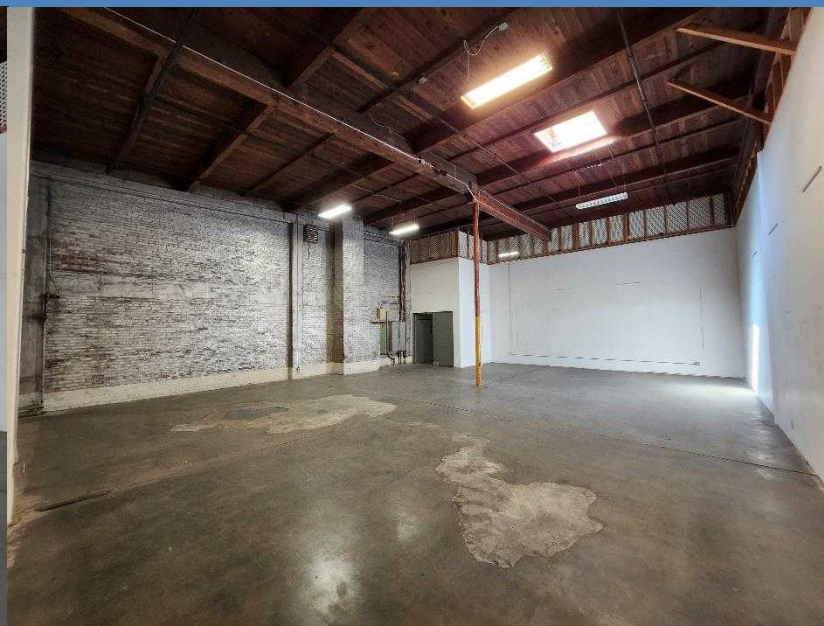
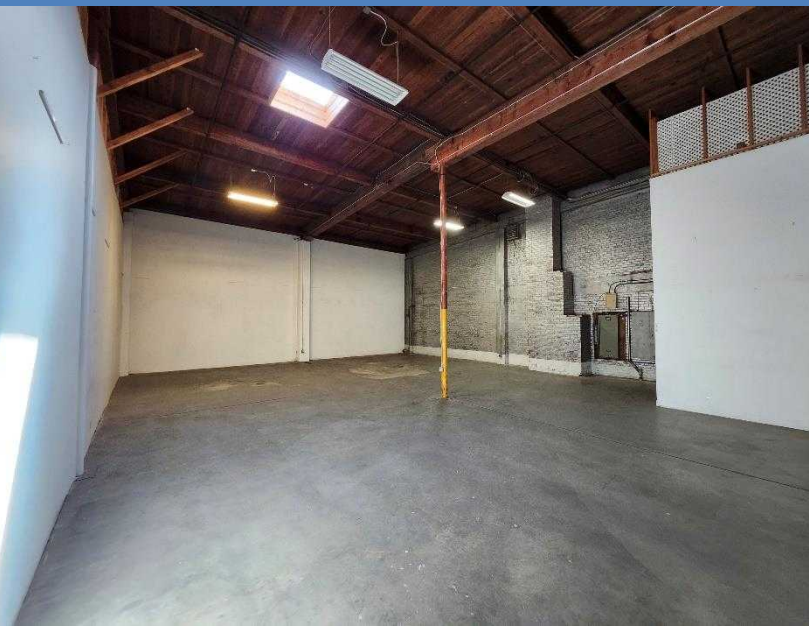
MARK TEMMEL
(206) 307-5726

mark@temmelre.com
Temmel Real Estate

SPACE DETAILS

Industrial warehouse space available now. Units 29 & 30 is 1,905 sq.ft. (usable) and is sprinklered. The space is roughly 40' x 49' and is accessed via a common hallway. Ceiling height is 20'10" with beams at 18'. Asking rate of \$2,924/month (\$1.25/sq.ft.) + NNN for a total of \$4,164/month. NNN charges include utilities. Located one block from the SODO light rail station. There is free street parking around the building. Easy access to I-5, Hwy 99, and I-90.

[VIDEO TOUR](#)



Square Feet	2,339 (BOMA)
Base Rent	\$1.25/SF
NNN	0.53¢/SF
Available	Now
Units	29 & 30

