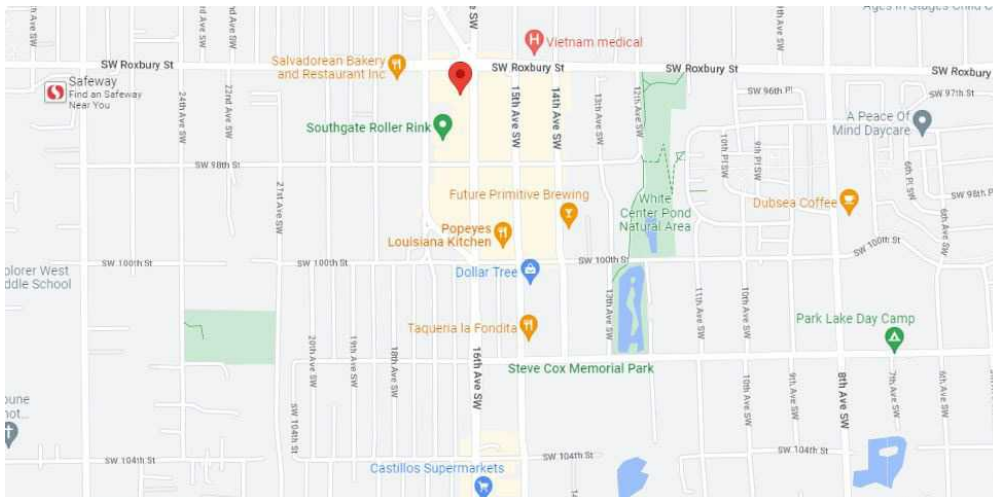
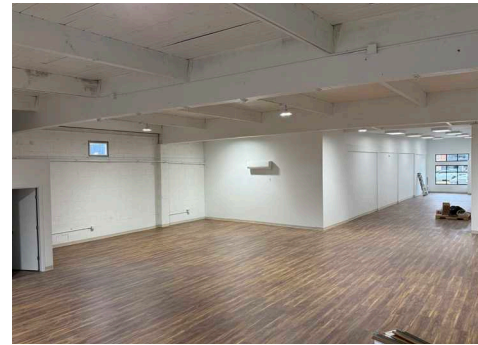
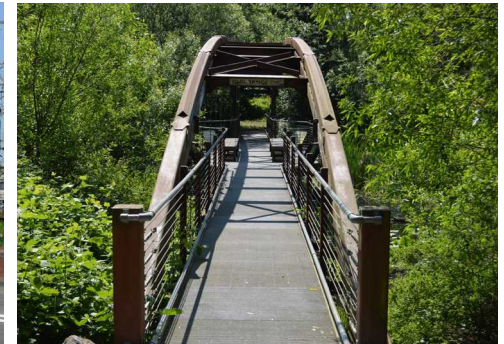


FOR LEASE

WHITE CENTER RETAIL SPACE
9609-9619 16TH AVE SW | SEATTLE, 98106



PROPERTY FEATURES

- Located in White Center on 16th ave right off of Delridge Way
- Multiple demising options
- Newly renovated, available now
- \$26/SF/YR + \$6 NNN for retail
- \$14/SF/YR, gross, for basement storage spaces.
- Located in unincorporated King County - great place to do business!



**ANDY
RANDLES**

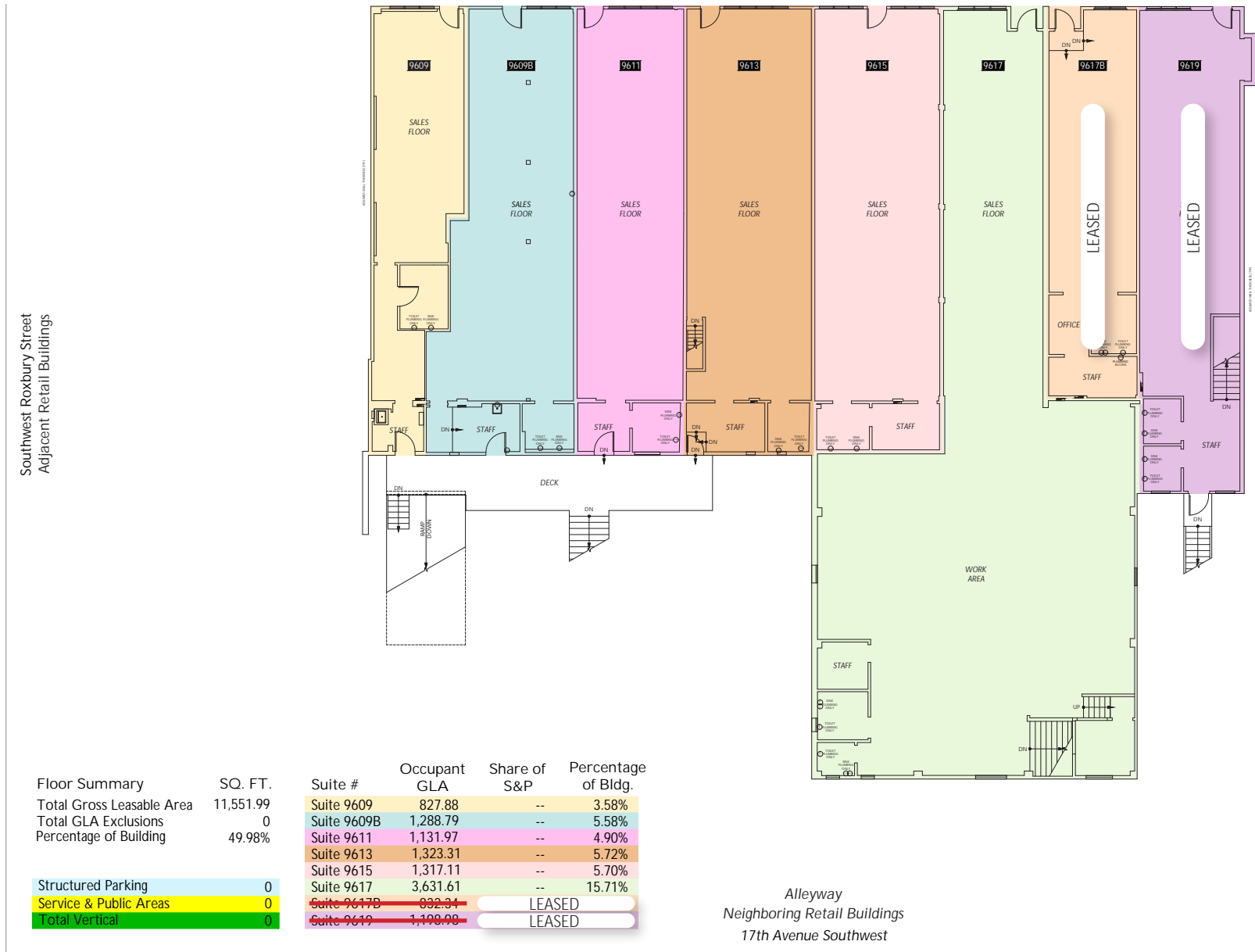
206.405.0090
andy@ewingandclark.com

**TOM
GRAFF**

206.295.1445
tomgraff@ewingandclark.com

FLOOR PLAN

9609-9619 16TH AVE SW | SEATTLE, 98106



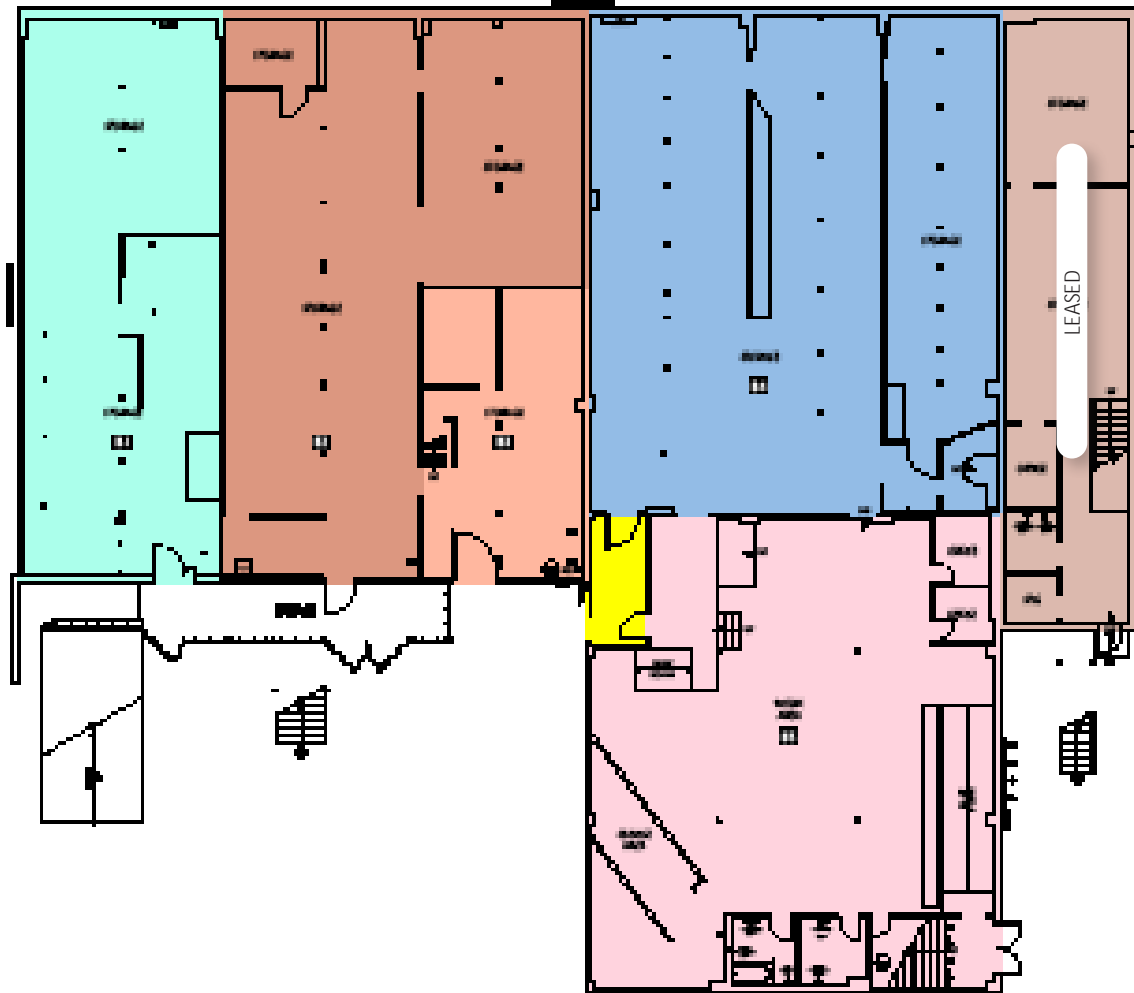
ANDY RANGLES | 206.405.0090
andy@ewingandclark.com

TOM GRAFF | 206.295.1445
tomgraff@ewingandclark.com

BASEMENT FLOOR PLAN

9609-9619 16TH AVE SW | SEATTLE, 98106

All areas are subject to change without notice.



Room Summary	SQ. FT.
Total Gross Inside Area	11,477
Total GFA Excludes	1,182
Average of 100%	1,029
Structural Parking	0
Service & Public Areas	118.30
Total Vertical	0

Room	Count	Area	Area	Percentage of GFA
B1 Storage	1,451.61	--	7.15%	
B2 Storage	3,267.48	--	9.81%	
B3 Storage	4,827.50	--	2.97%	
B4 Storage	2,971.30	48'-6"	13.12%	
B5 Storage	3,493.28	54'-0"	11.88%	
B6 Storage	1,177.79	LEASED		

*Area includes a proportional share of Service & Public Areas (118.30 SF).

Always
 Verify with the Architect
 Prior to Construction



**ANDY
 RANDLES**

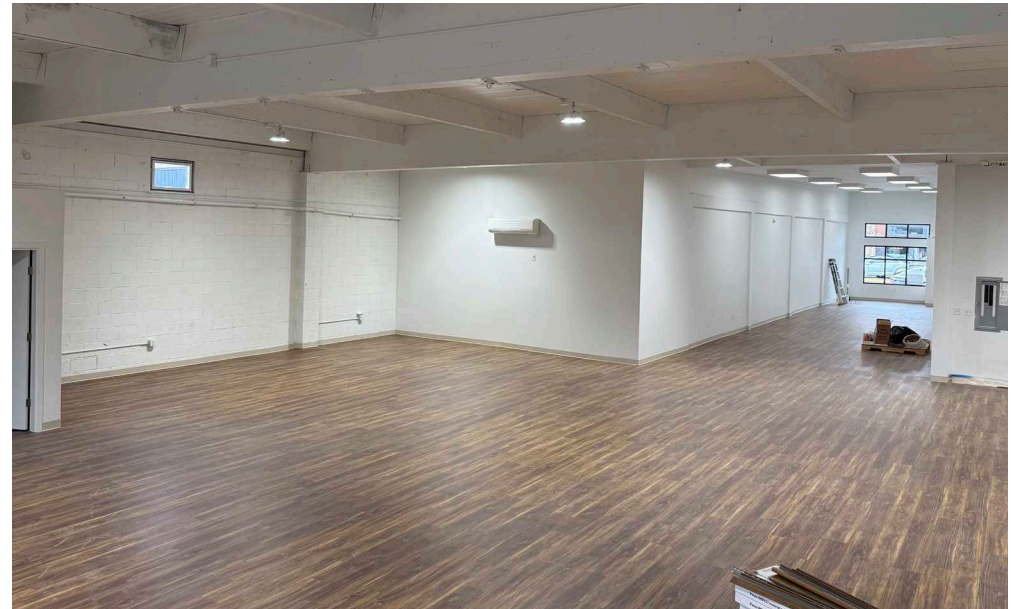
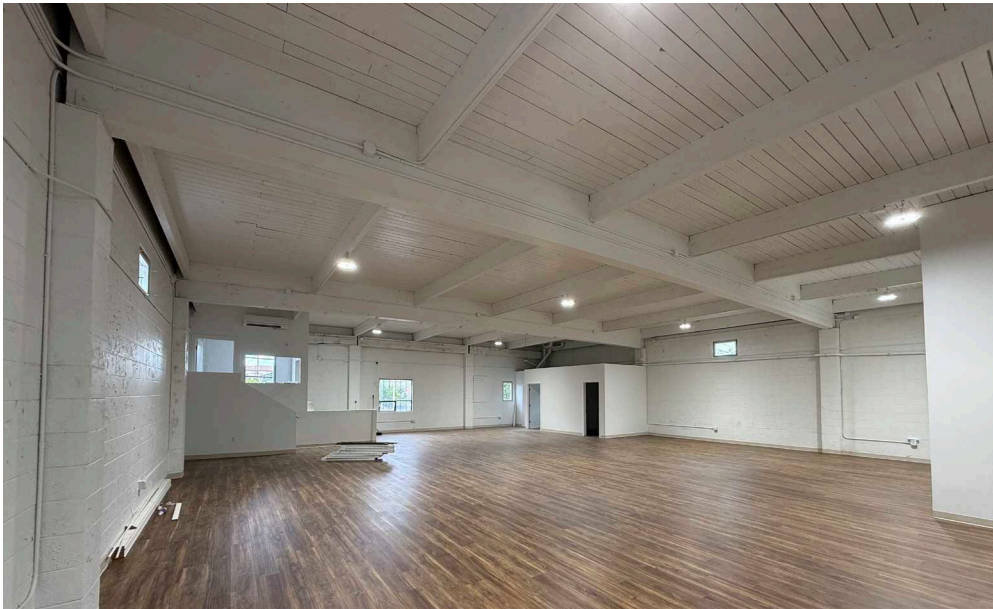
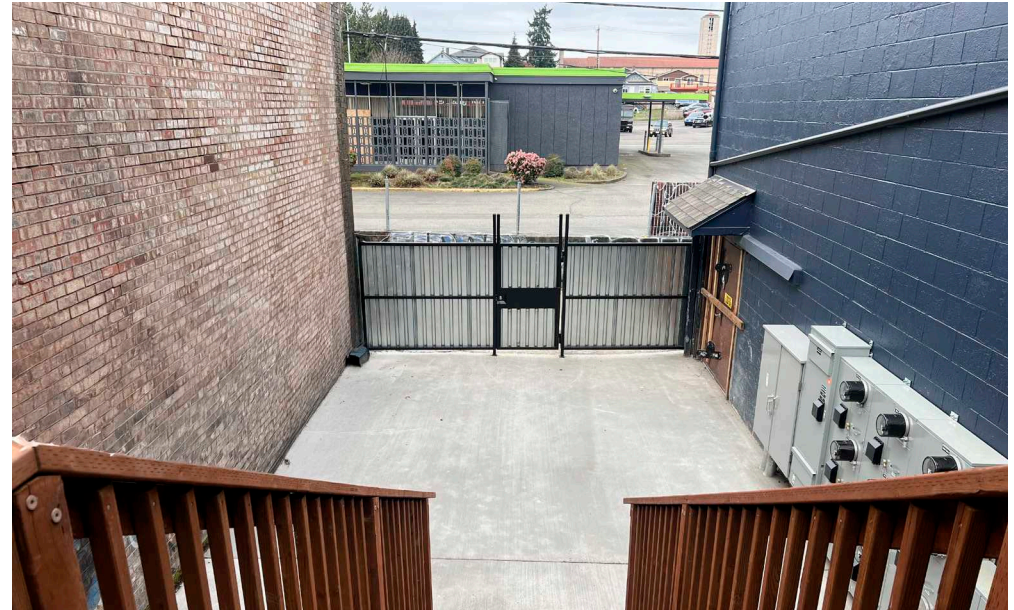
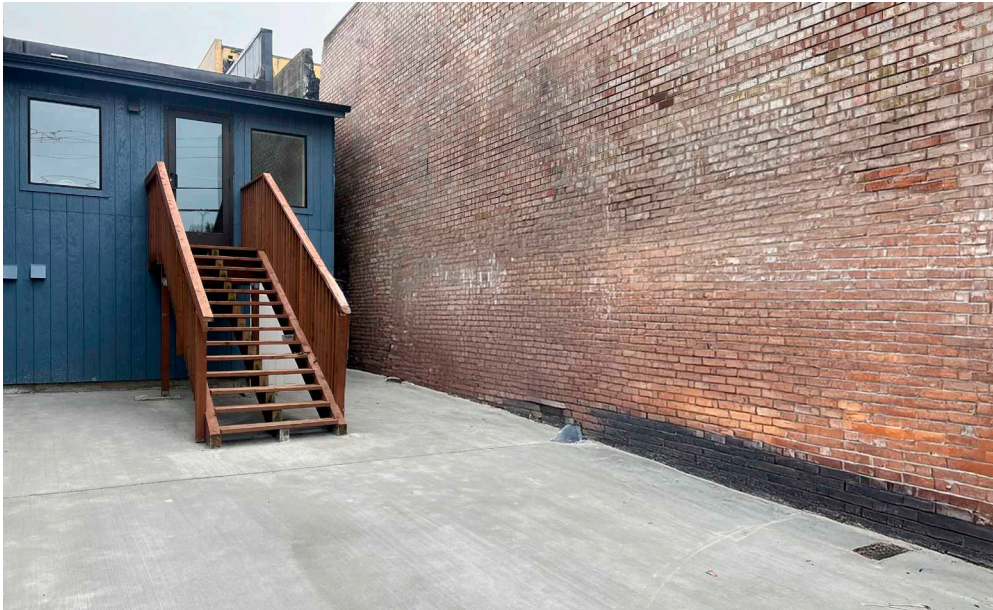
206.405.0090
 andy@ewingandclark.com

**TOM
 GRAFF**

206.295.1445
 tomgraff@ewingandclark.com

PHOTOS

9609-9619 16TH AVE SW | SEATTLE, 98106

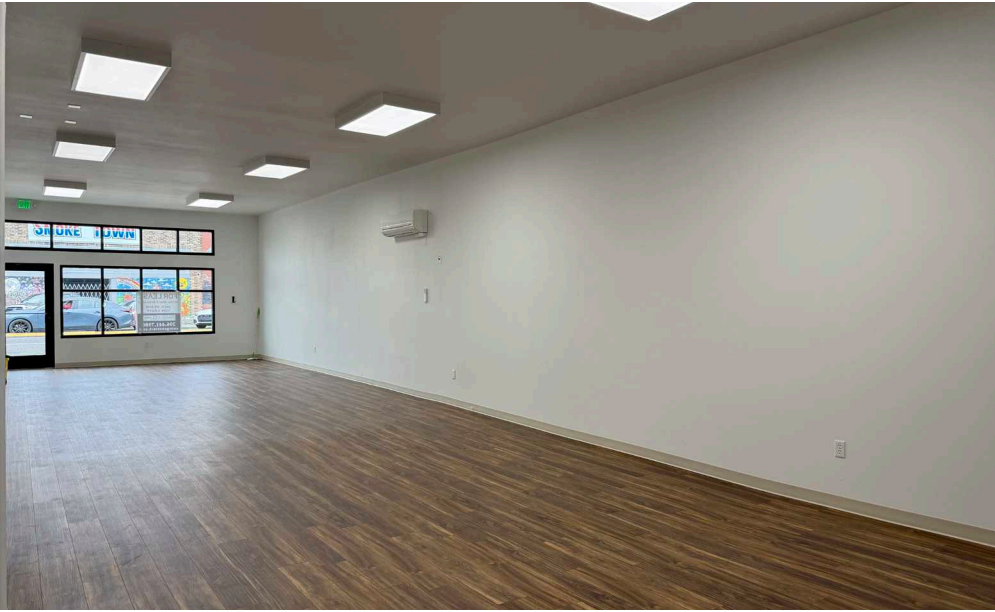
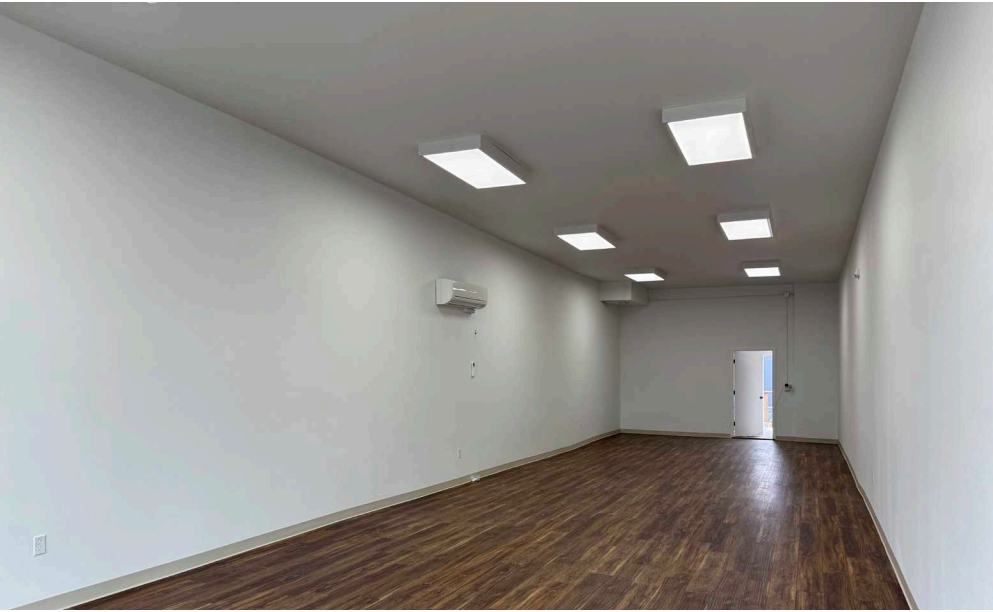
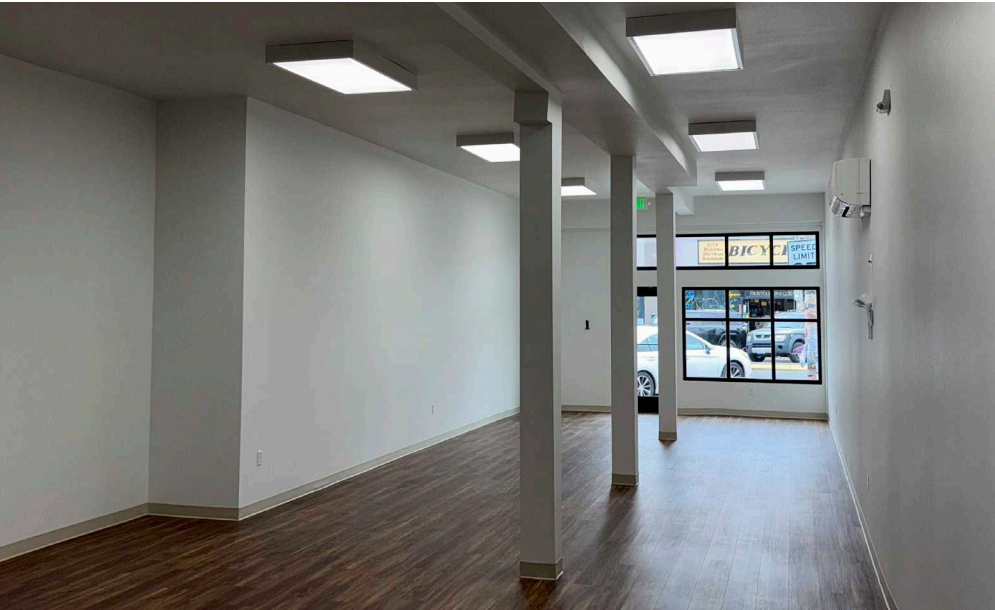
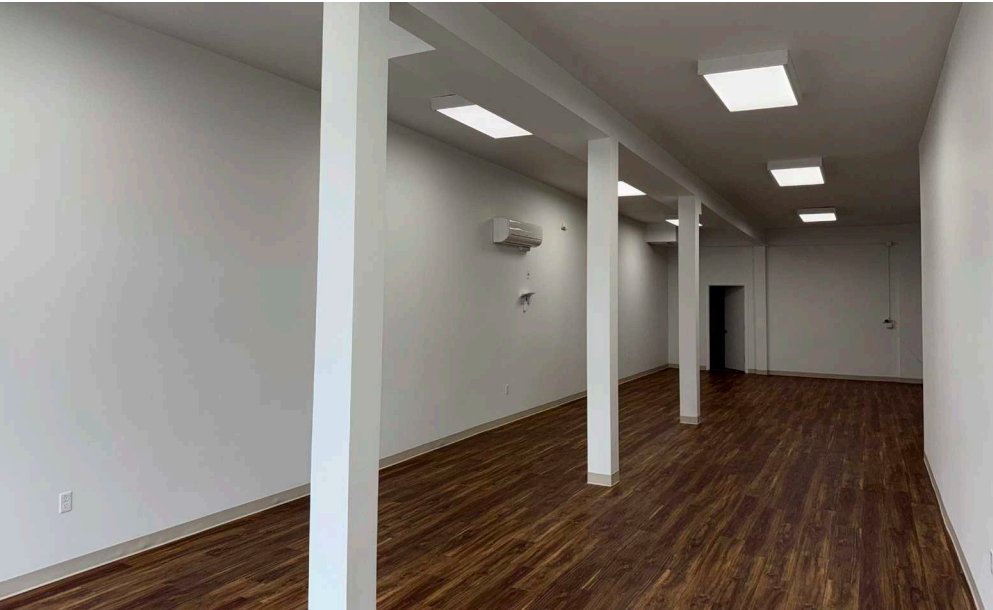


**ANDY
RANDLES** | 206.405.0090
andy@ewingandclark.com

**TOM
GRAFF** | 206.295.1445
tomgraff@ewingandclark.com

PHOTOS

9609-9619 16TH AVE SW | SEATTLE, 98106

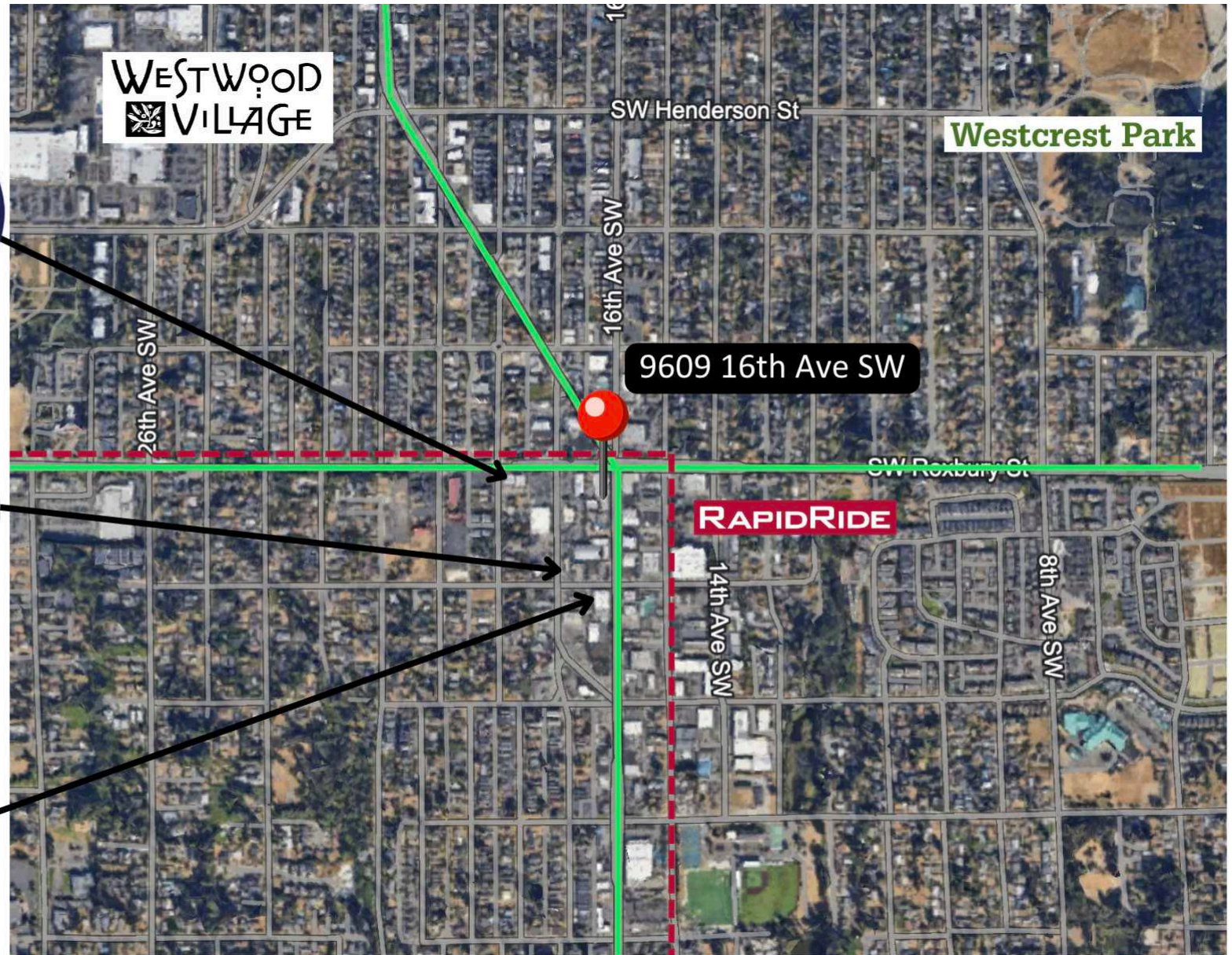


ANDY RANGLES | 206.405.0090
andy@ewingandclark.com

TOM GRAFF | 206.295.1445
tomgraff@ewingandclark.com

AERIAL MAP

9609-9619 16TH AVE SW | SEATTLE, 98106



ANDY RANGLES | 206.405.0090
andy@ewingandclark.com

TOM GRAFF | 206.295.1445
tomgraff@ewingandclark.com