

**2108 CENTURY WAY**  
**BOISE, ID**



# FOR SUBLEASE

**OFFICE FLEX SPACE**

**±15,000 SF BUILDING ON 1.24 ACRE LOT**

**\$9.95 / SF NNN**

**KARENA GILBERT**

Vice President

+1 208 488 3164

karena.gilbert@cbre.com

**KYLE UHLENKOTT**

Senior Associate

+1 208 488 3161

kyle.uhlenkott@cbre.com

**CBRE**



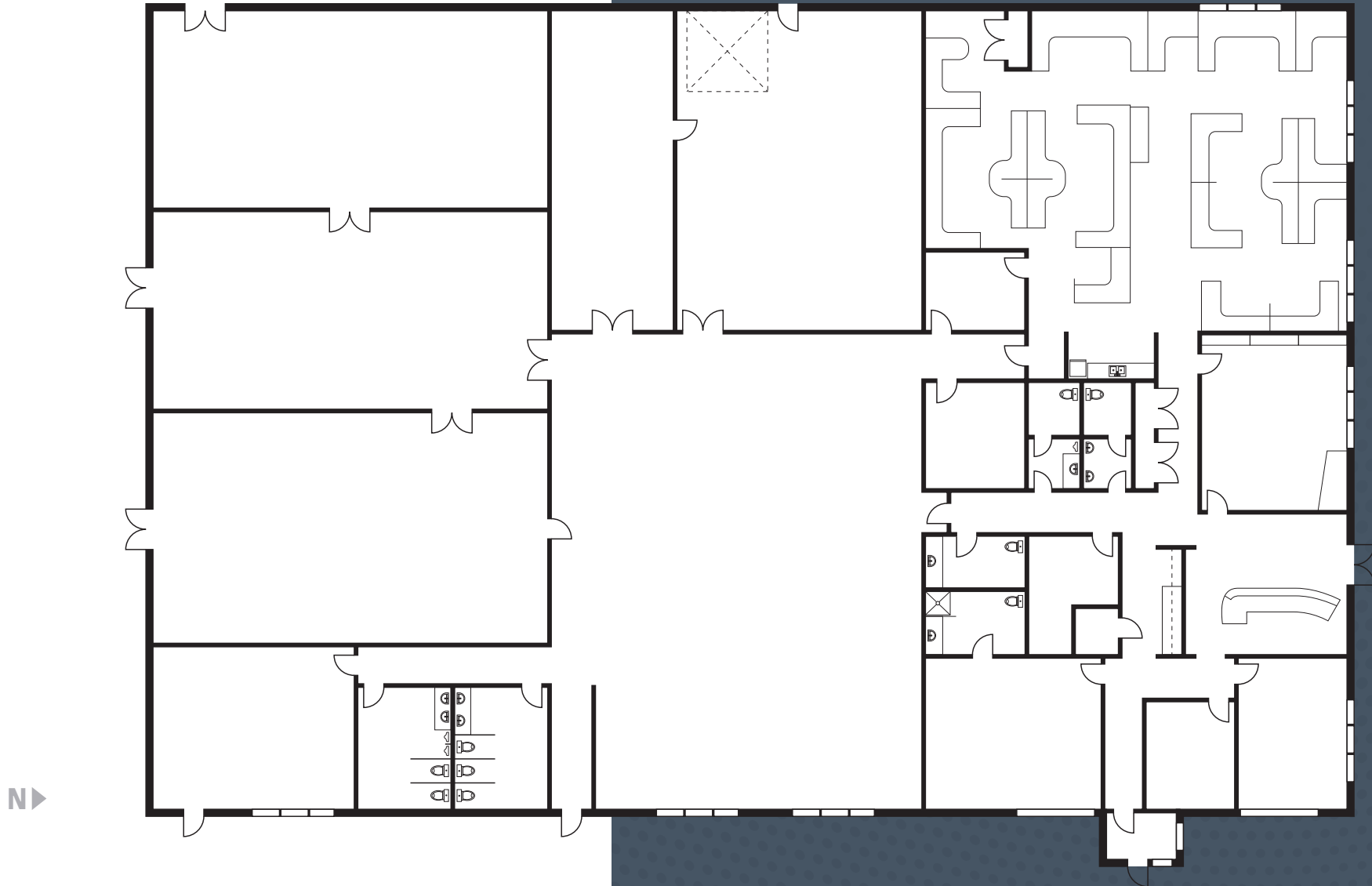
## PROPERTY OVERVIEW

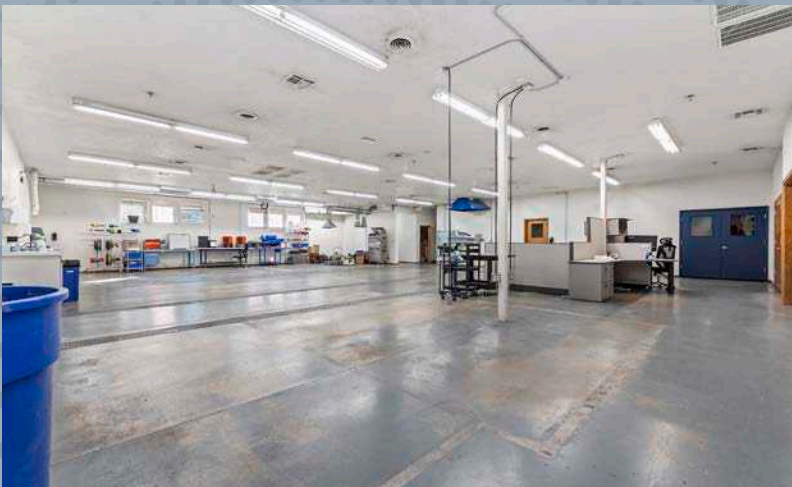
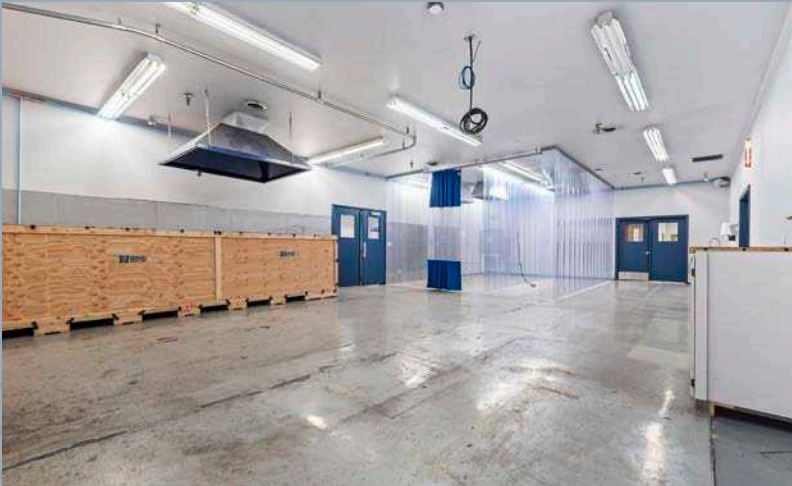
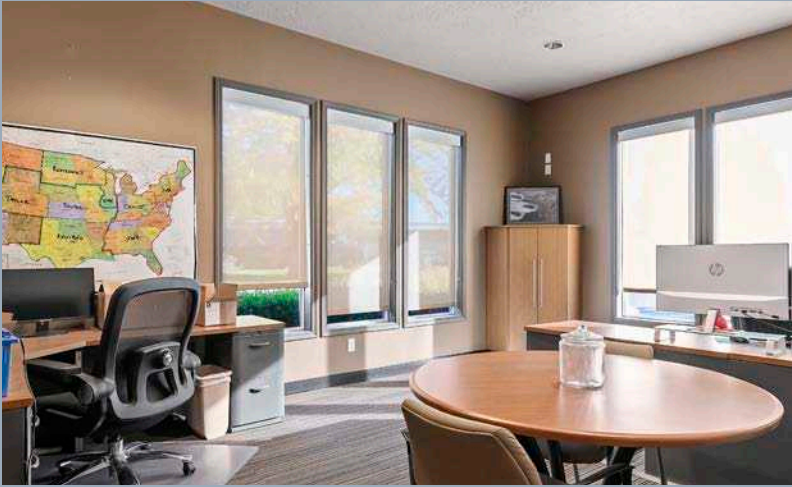
- Versatile Mixed-Use Potential
- Temperature Controlled Throughout
- Monument Signage Opportunity
- Potential for Yard Space or Additional Parking
- 10' Ceilings
- Centrally Located - Easy Access to I-84 and the 184 Downtown Connector
- Secured Entry & Lobby
- Plumbed Air Compressor
- Zoned: City of Boise I-1
- Do Not Disturb Tenant - Contact Broker for Touring Instructions

<b>Available SF</b>	±15,000 SF
<b>Building Type</b>	Office Flex Space
<b>Lease Rate</b>	\$9.95 / SF
<b>Lease Type</b>	NNN
<b>Lot Size</b>	1.24 Acres

# FLOOR PLAN

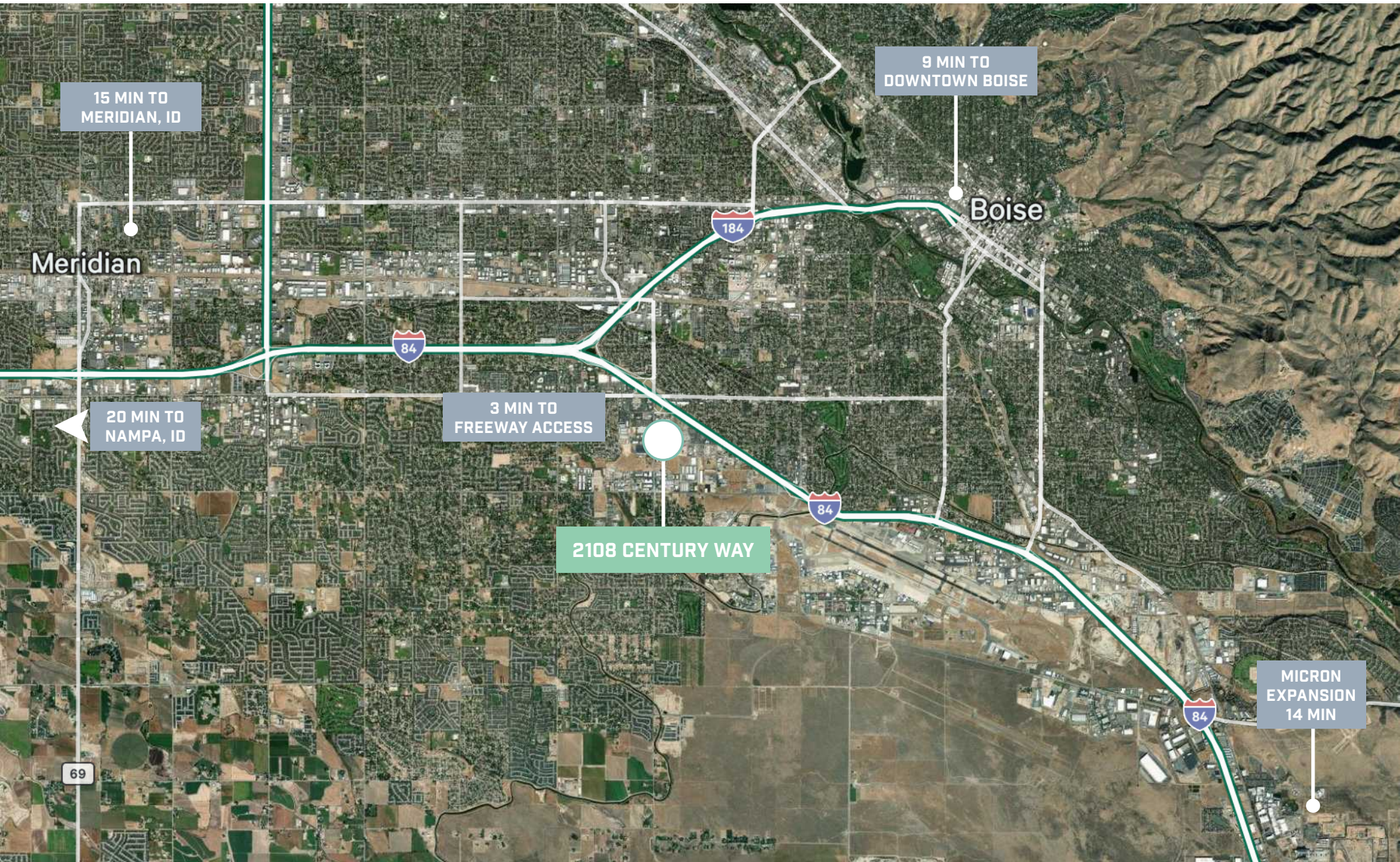
±15,000 SF standalone office flex building for sublease







# CENTRALLY LOCATED



# AMENITIES





**±15,000 SF  
FOR SUBLEASE**

**2108  
CENTURY  
WAY**

**KARENA GILBERT**

Vice President  
+1 208 488 3164  
karena.gilbert@cbre.com

**KYLE UHLENKOTT**

Senior Associate  
+1 208 488 3161  
kyle.uhlenkott@cbre.com

**CBRE**

© 2026 CBRE, Inc. All rights reserved. This information has been obtained from sources believed reliable but has not been verified for accuracy or completeness. CBRE, Inc. makes no guarantee, representation or warranty and accepts no responsibility or liability as to the accuracy, completeness, or reliability of the information contained herein. You should conduct a careful, independent investigation of the property and verify all information. Any reliance on this information is solely at your own risk. CBRE and the CBRE logo are service marks of CBRE, Inc. All other marks displayed on this document are the property of their respective owners, and the use of such marks does not imply any affiliation with or endorsement of CBRE. Photos herein are the property of their respective owners. Use of these images without the express written consent of the owner is prohibited. PMStudio\_January2026