

FOR LEASE

RETAIL/
SHOWROOM +
FLEX SPACE

2219 JAMES ST.
BELLINGHAM, WA

GREG MARTINEAU, CCIM
BROKER/ OWNER
GREG@GAGECRE.COM
(360) 820-4645

TRACY CARPENTER
BROKER/ OWNER
TRACY@GAGECRE.COM
(360) 303-2608



WWW.GAGECRE.COM

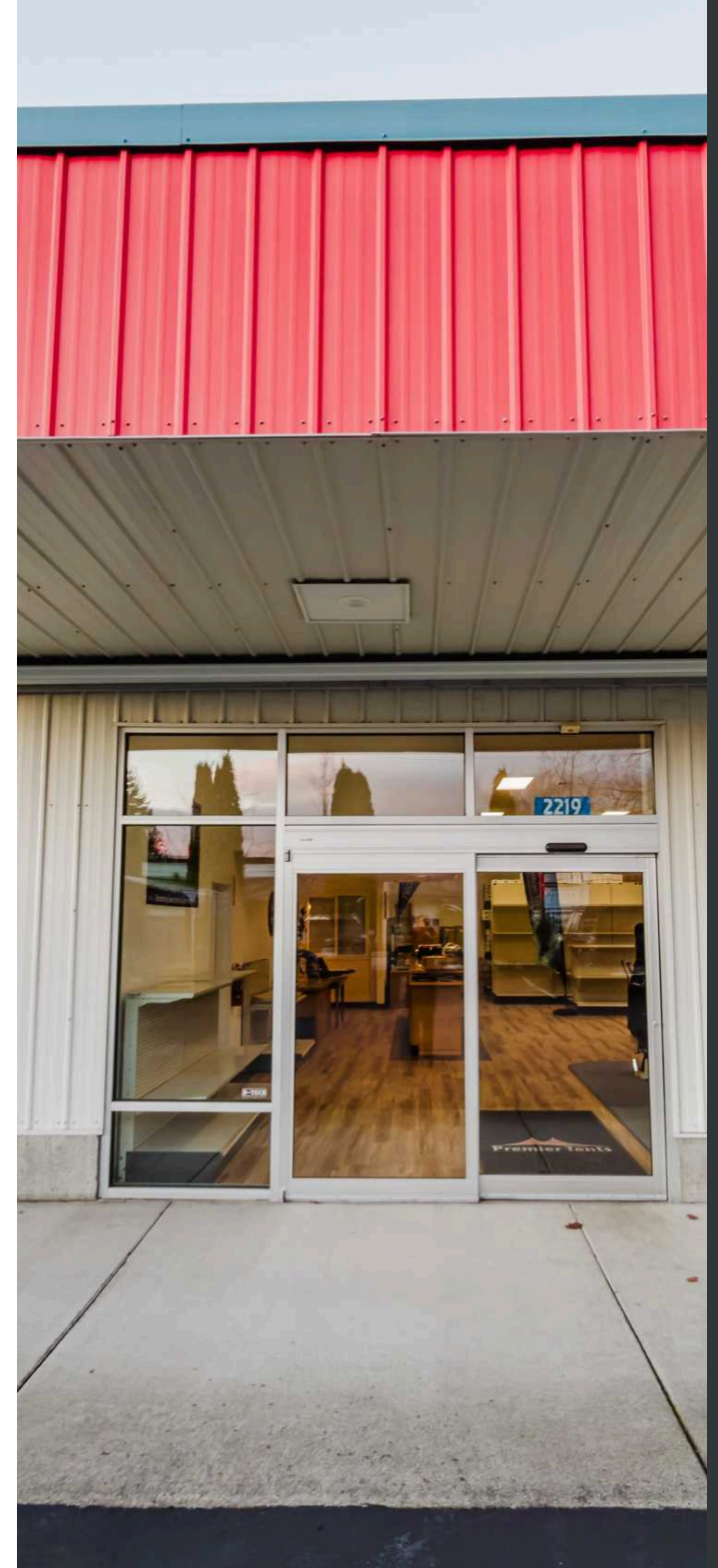
IMPORTANT DISCLOSURES

This Marketing Material has been prepared by Gage Commercial Real Estate, LLC for informational purposes only. The information contained herein is believed to be reliable, but no representation or warranty, express or implied, is made regarding its accuracy, completeness, or correctness. Prospective tenants are encouraged to conduct their own due diligence and consult with their advisors before making any investment decision.

This Marketing Material is not an offer to sell or a solicitation of an offer to buy any securities or interests in the property. Any offering or solicitation will be made only to qualified prospective purchasers pursuant to applicable laws and regulations. The information contained in this Memorandum is confidential and is intended solely for the use of the recipient. It may not be reproduced or distributed, in whole or in part, without the prior written consent of Gage Commercial Real Estate, LLC.

Prospective tenants should rely solely on their own investigation and evaluation of the property and any investment decision should be made based on the purchaser's own analysis. Gage Commercial Real Estate, LLC and its representatives make no representation or warranty, express or implied, as to the accuracy or completeness of the information contained herein.

By accepting this Marketing Material, you agree to the above terms and conditions.



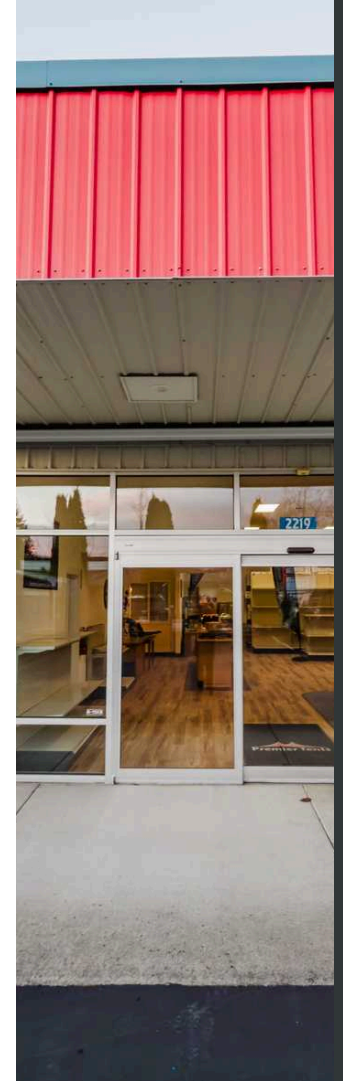
THE OFFERING

4,350 SF | RETAIL/ SHOWROOM + FLEX SPACE

Exceptionally well located and maintained stand-alone in the Sunnyland neighborhood, near Trader Joes. Excellent visibility with ease of access from James St. Rarely offered mix of Showroom/ Retail & Warehouse Flex space with fenced/secured parking lot area.

- 4,350 SF Total Building Size
 - 2,350 SF Warehouse/ Flex Space
 - 2,000 SF Office/ Showroom
- 6,500 SF Fenced Yard Space
- 10 Marked Parking Spaces

PROPERTY ADDRESS	2219 James St Bellingham WA 98225
SQUARE FEET	4,350 SF
LOT SIZE	0.33 Ac. (14,374 SF)
PARCEL NUMBER	380330536526, 380330535519
LEASE RATE	\$22/ SF / YR
NNN	\$9.90 SF/ YR.



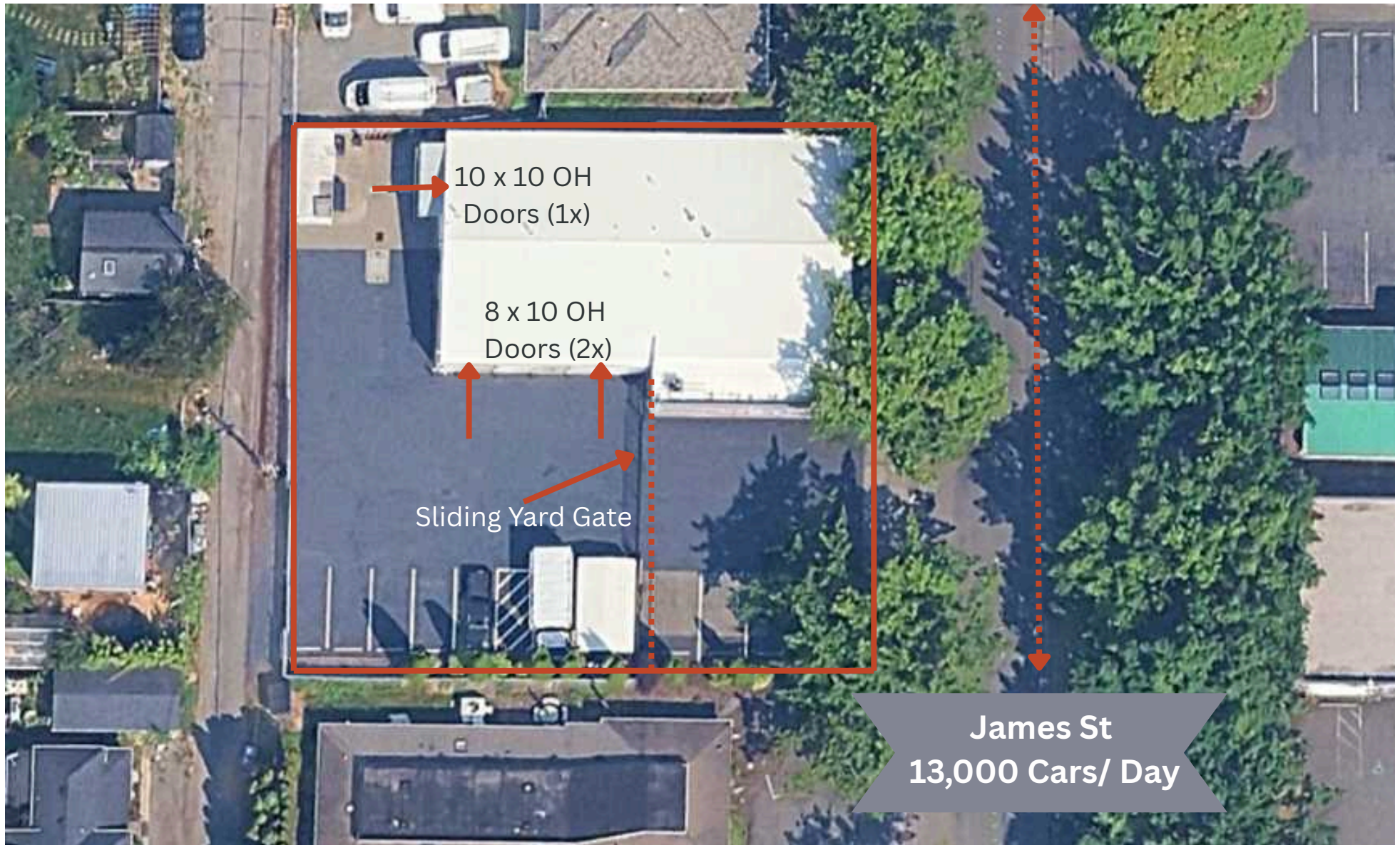


HIGHLIGHTS

- 4,350 SF Total Building Size
 - 2,000 SF Retail/ Showroom
 - 2,350 SF Warehouse/ Flex Space
 - 2x 8x 10 OH Doors
 - 1x 10x10 OH Door
- Approx. 6,500 SF Fenced/ Secure Yard Space
- 10 Marked Parking Spaces
- Vehicle Washing Station
- Warehouse space plumbed for pneumatics
- Station for Fork Lift charging
- Additional Mezz. level storage

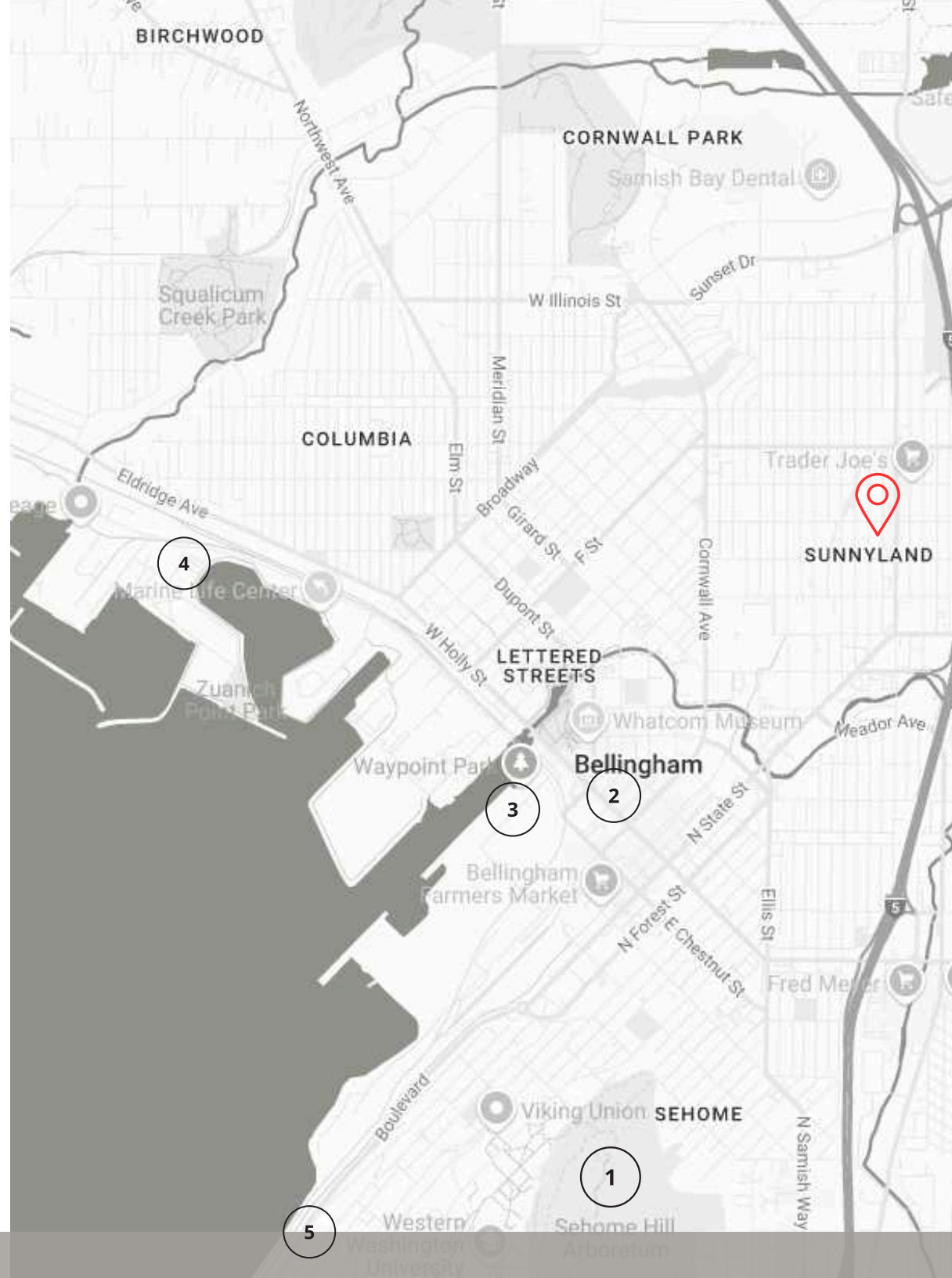


SITE AERIAL



NEARBY AMENITIES

- 1 Western Washington University
- 2 Bellingham Downtown
- 3 Bellingham Waypoint Park
- 4 Bellingham Harbor
- 5 Fairhaven



AERIAL



2219 JAMES ST
BELLINGHAM

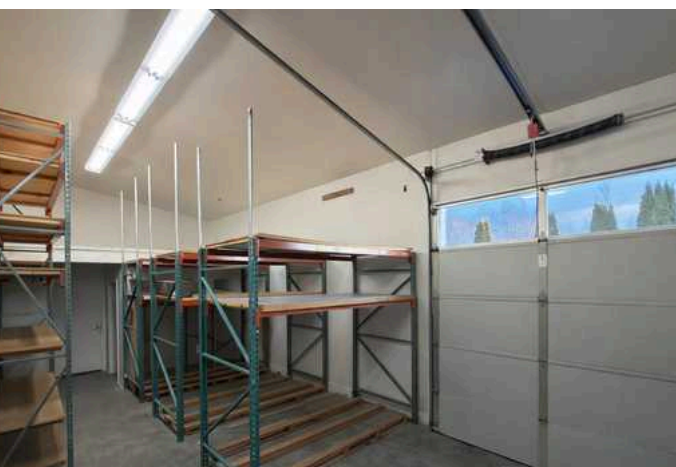
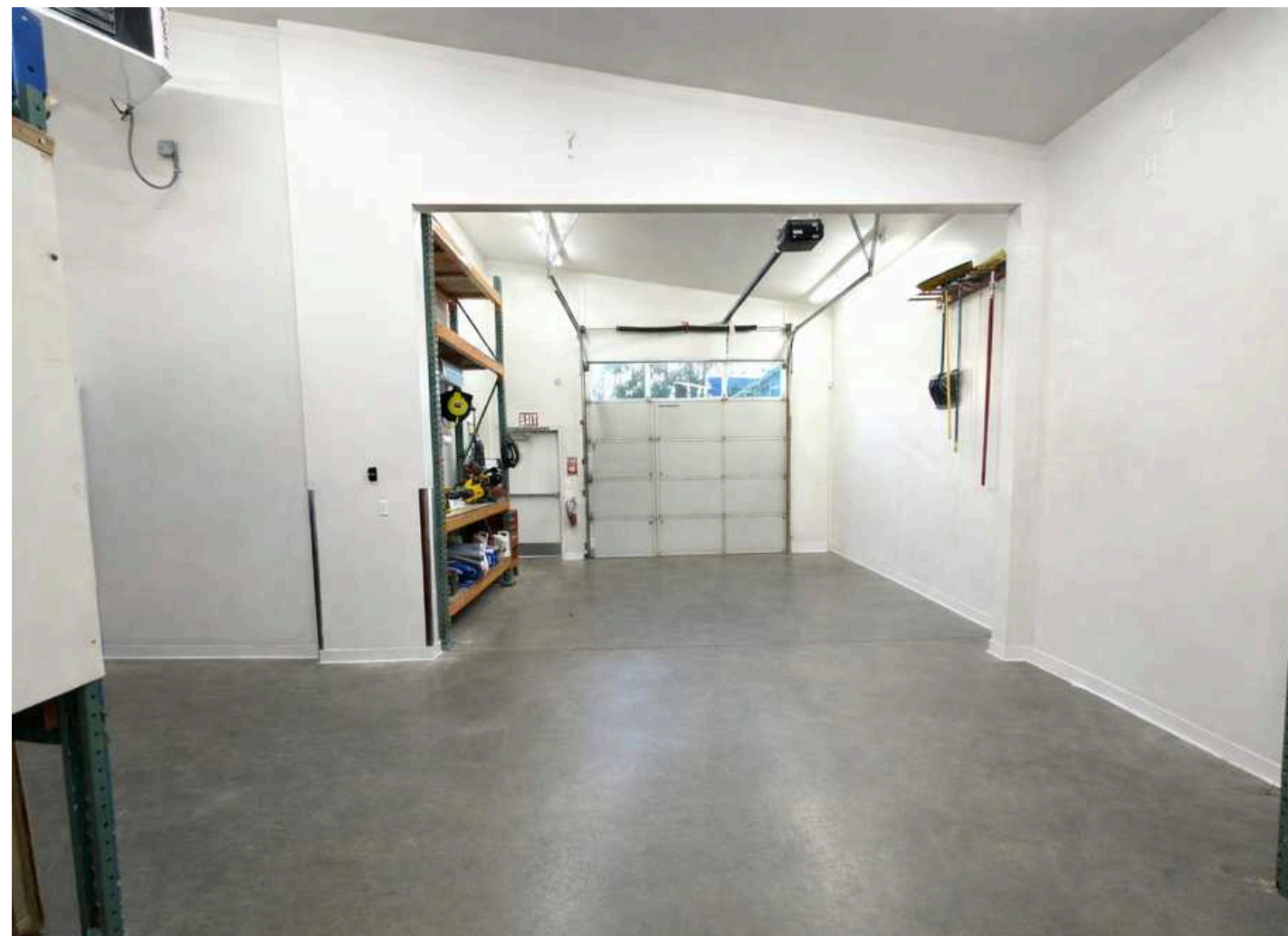
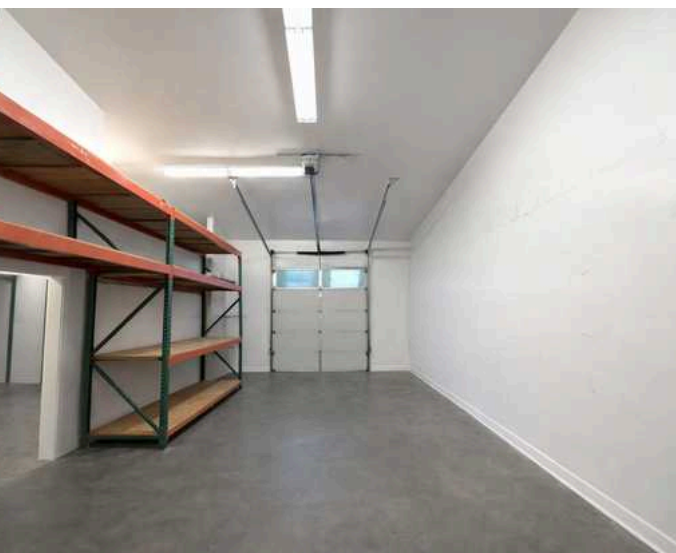


2219 JAMES ST, BELLINGHAM WA

Image © 2025 Airbus

[illegible]





AREA OVERVIEW

BELLINGHAM, WA

On the shores of Bellingham Bay with Mount Baker as its backdrop, Bellingham is historically one of the Top 100 places to live in the Nation, and the last major city before the Washington coastline meets the Canadian border. The City of Bellingham, which serves as the county seat of Whatcom County, is at the center of a uniquely picturesque area offering a rich variety of recreational, cultural, educational and economic activities.

Quick Facts:

- Population: 90,620
- Area: 30.1 square miles
- Travel distances
- Canadian border: 21 miles
- Vancouver, B.C: 52 miles
- Seattle: 90 miles
- Miles of bike lanes: 61.1
- Miles of trails: 68.7





CONTACT

Greg Martineau, CCIM
Broker/ Owner
360-820-4645
Greg@gagecre.com

Tracy Carpenter
Broker/ Owner
360-303-2608
Tracy@gagecre.com



Gage Commercial Real Estate, LLC | 809 W Orchard Dr, Ste 7, Bellingham, WA |
360-483-0508 | greg@gagecre.com, tracy@gagecre.com
www.GageCRE.com