



400 EAST PINE

*Multiple office spaces for lease
located in Capitol Hill*

400 E PINE ST, SEATTLE, WA 98122

2,374 RSF

SUITE 301

1,227 RSF

SUITE 225

PROPERTY DETAILS

\$24 psf lease rate - Full Service

Owner will consider TI's - term pending

Access to secure, safe parking at 1/1100 SF
~ ratio at \$175/month/stall

Minimum of 1 year term

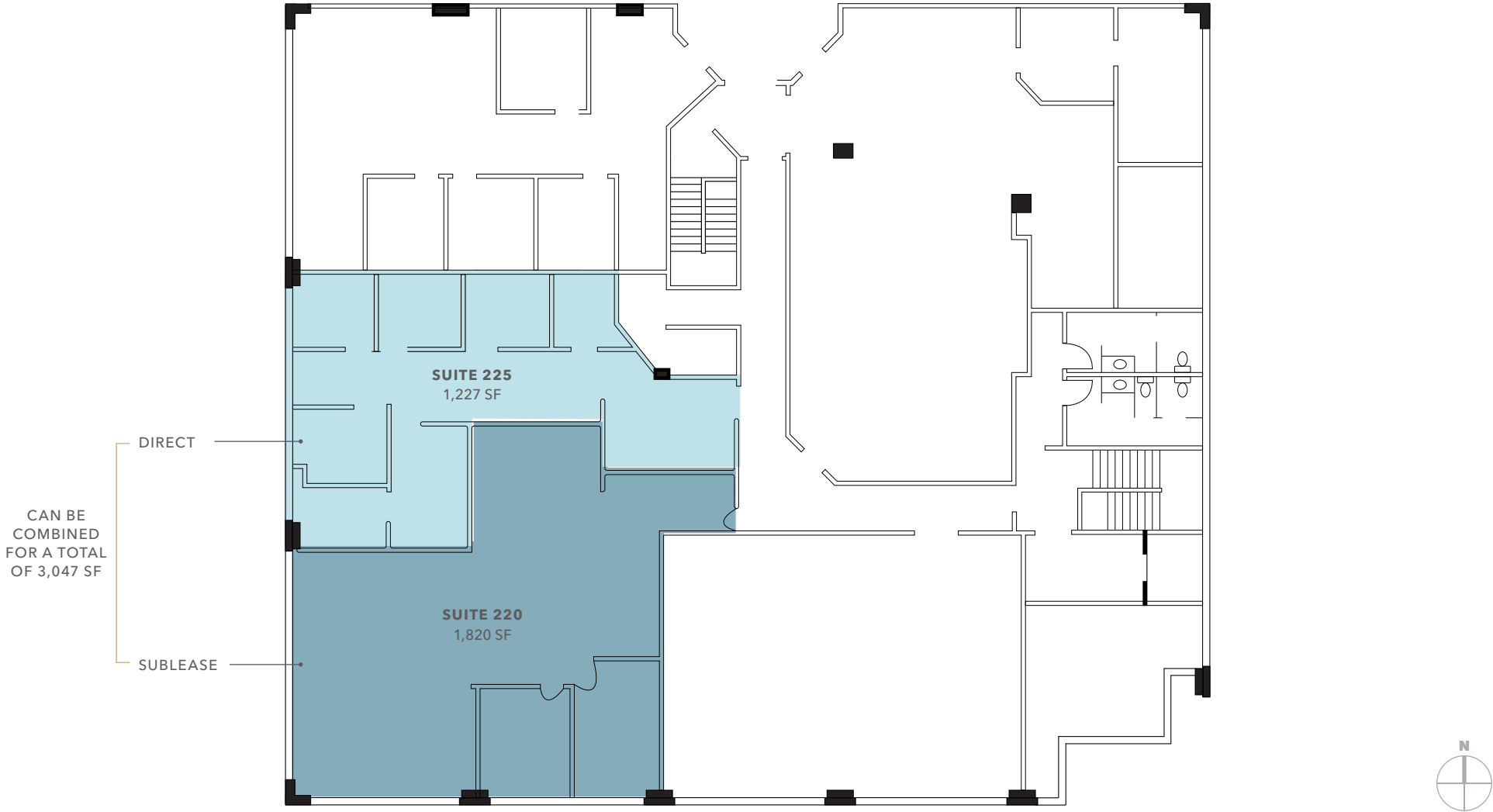
Great Capitol Hill/East downtown space
opportunity

Exposed brick walls and high ceilings on
Floor 3 Suite #301

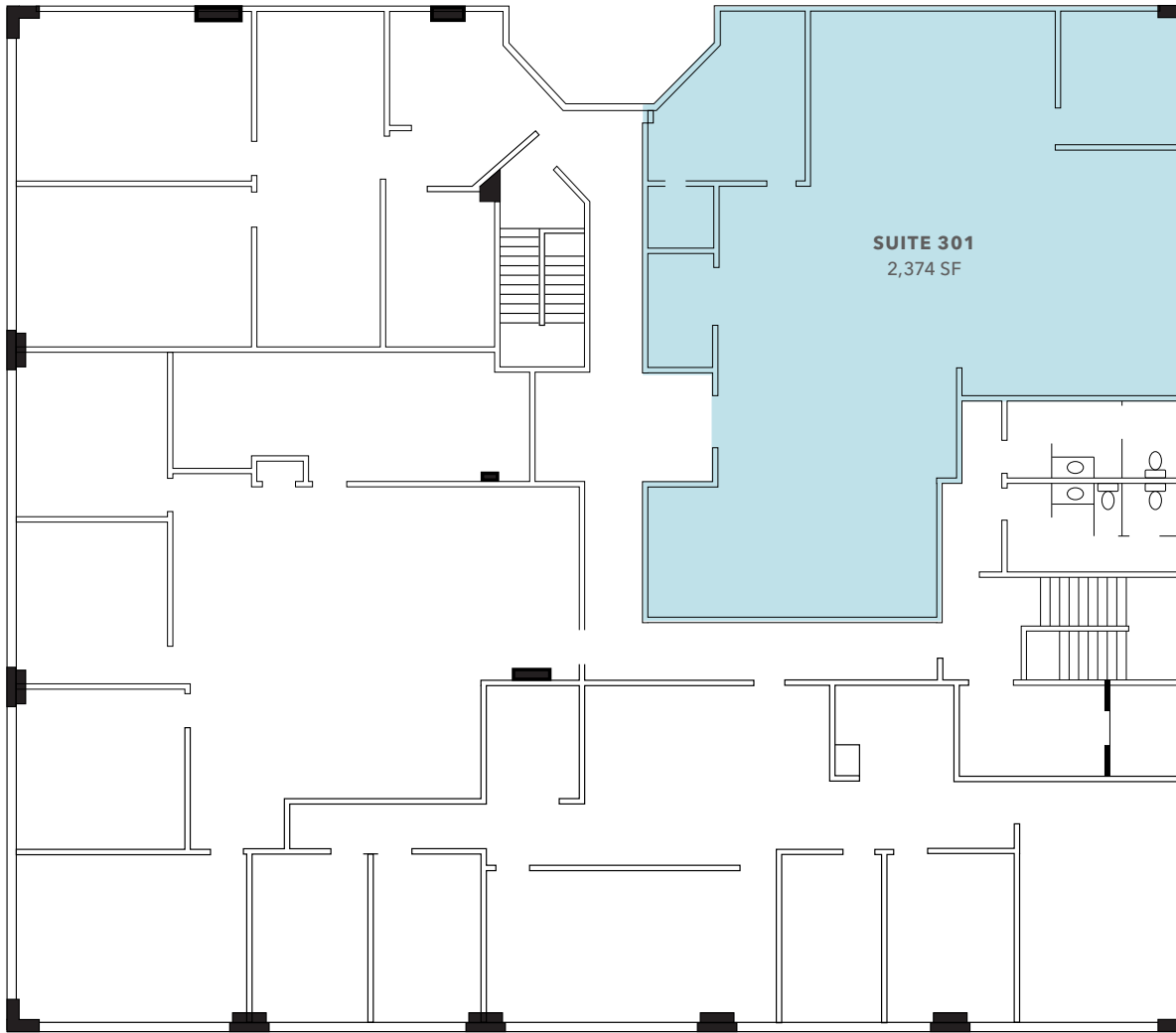


NOW
AVAILABLE

SECOND FLOOR PLAN



THIRD FLOOR PLAN



FEATURES

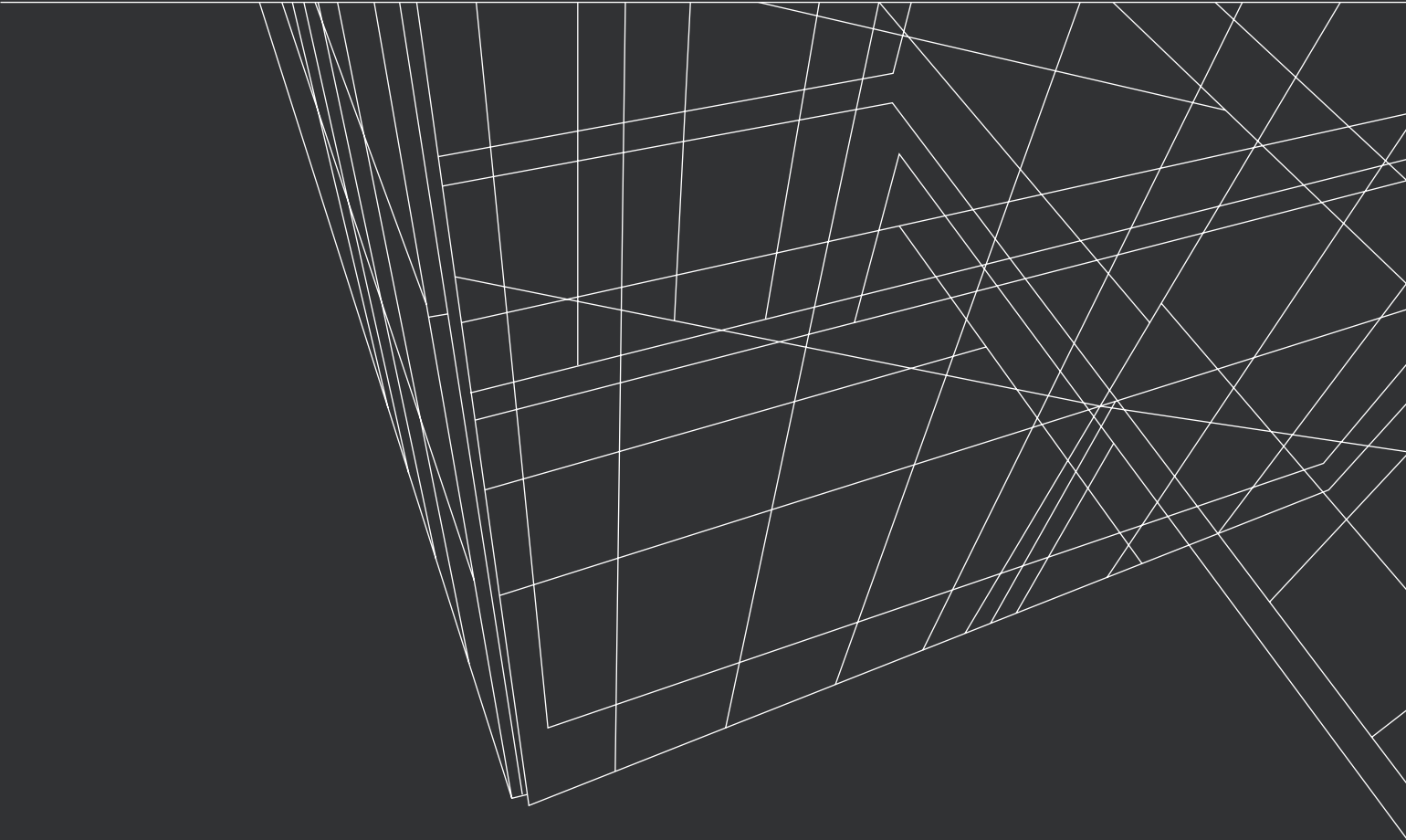
High ceilings

Exposed brick wall

Sky lights



400 EAST PINE



Exclusively leased by

DAN STUTZ

206.228.8855

dan.stutz@kidder.com

KIDDER.COM

This information supplied herein is from sources we deem reliable. It is provided without any representation, warranty, or guarantee, expressed or implied as to its accuracy. Prospective Buyer or Tenant should conduct an independent investigation and verification of all matters deemed to be material, including, but not limited to, statements of income and expenses. Consult your attorney, accountant, or other professional advisor. All Kidder Mathews designs are the sole property of Kidder Mathews. Branded materials and layouts are not authorized for use by any other firm or person.

