

FOR SUBLEASE - LOWEST RATE IN MARKET

Lakewood Industrial Park

4500 92nd Street Court SW, Lakewood, WA

*Prime warehouse location with rail service
and 6 rail doors.*

PROPERTY HIGHLIGHTS

- + 21 Dock Doors
- + 3 Grade Level Doors
- + 24' Clear Height
- + Heavy Power
- + Rail Served with 6 Rail Doors
- + Direct Deal Possible
- + Master Lease Expires December 31, 2025

BRET MATYSIK

Partner
+1 425 586 5617
bmatysik@nai-psp.com

KYLE SCHIPPER, SIOR

Partner
+1 253 203 13220
kschipper@nai-psp.com

ARIE SALOMON, SIOR, CCIM

Principal
+1 425 586 5636
asalomon@nai-psp.com



THE INFORMATION CONTAINED HEREIN HAS BEEN GIVEN TO US BY THE OWNER OF THE PROPERTY OR OTHER SOURCES WE DEEM RELIABLE, WE HAVE NO REASON TO DOUBT ITS ACCURACY, BUT WE DO NOT GUARANTEE IT. ALL INFORMATION SHOULD BE VERIFIED PRIOR TO PURCHASE OR LEASE.

TOTAL SF

**25,000 -
106,720 SF**

OFFICE SF

5,191 SF

PRICE/SF

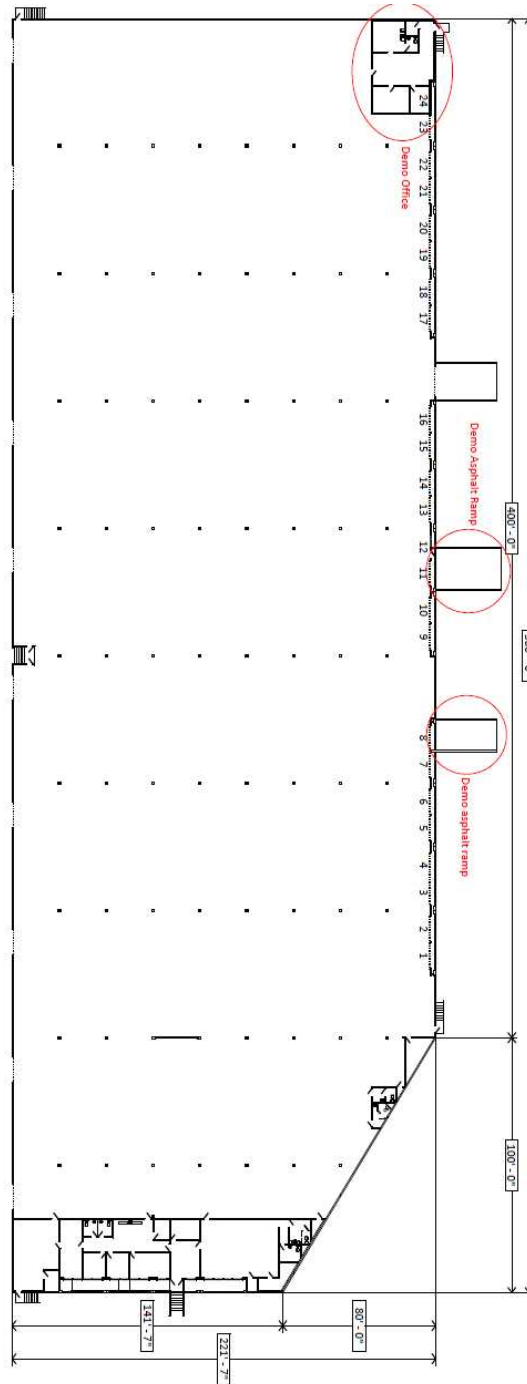
\$0.40 Blended

TYPE

NNN

nai-psp.com

Floor Plan



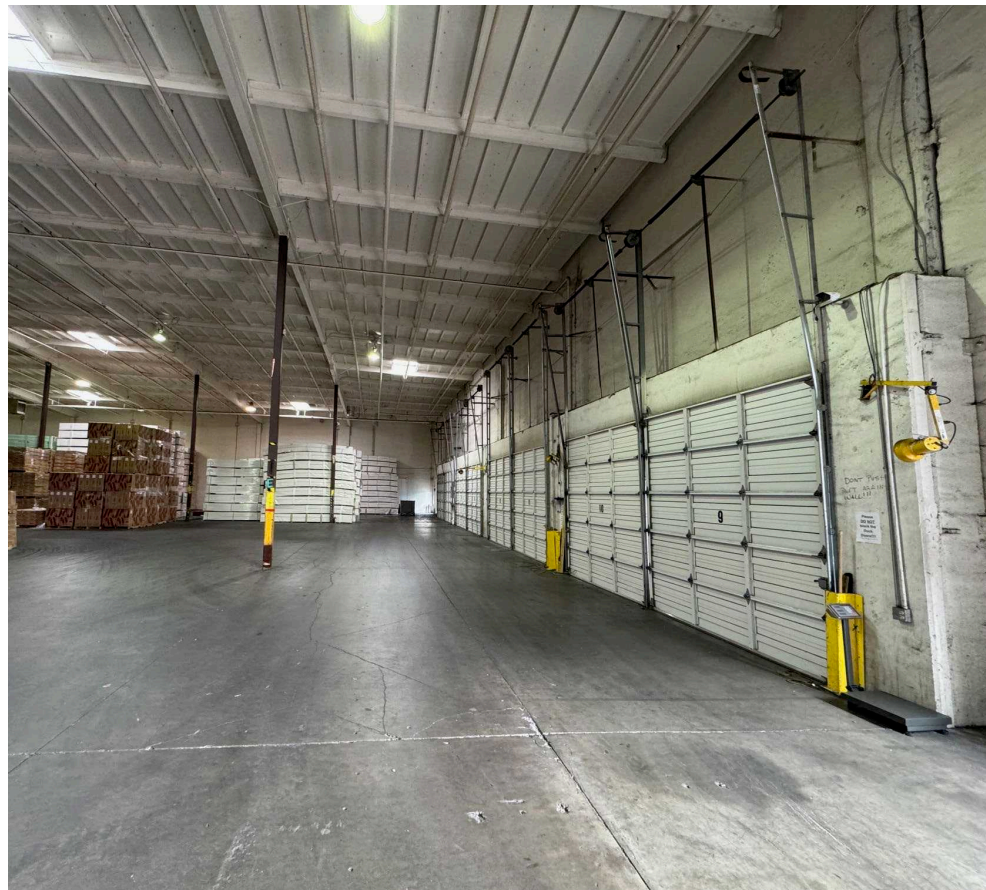
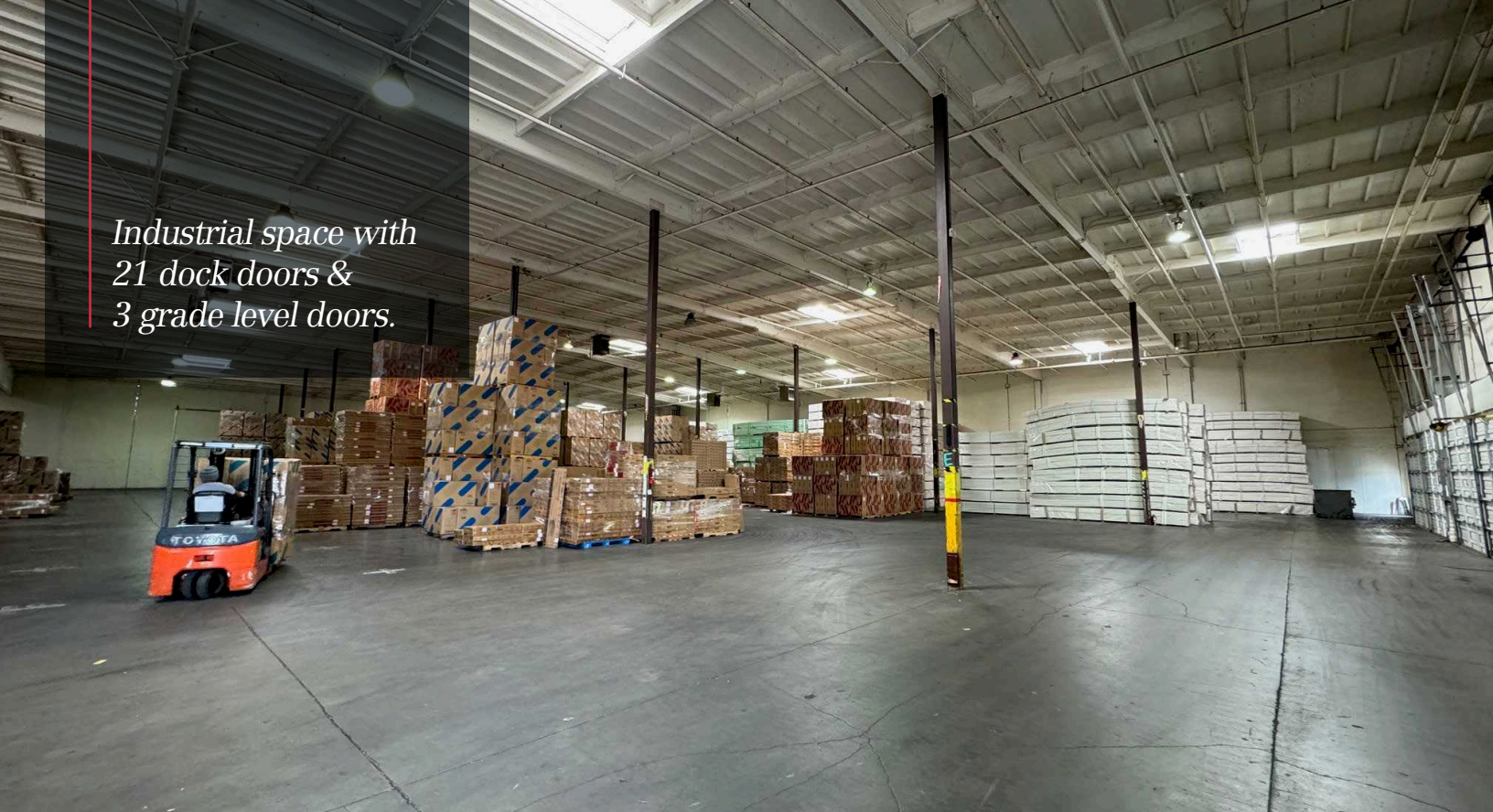
BRET MATYSIK
Partner
+1 425 586 5617
bmatysik@nai-pp.com

KYLE SCHIPPER, SIOR
Partner
+1 253 203 13220
kschipper@nai-pp.com

ARIE SALOMON, SIOR, CCIM
Principal
+1 425 586 5636
asalomon@nai-pp.com



*Industrial space with
21 dock doors &
3 grade level doors.*



BRET MATYSIK
Partner
+1 425 586 5617
bmatysik@nai-pp.com

KYLE SCHIPPER, SIOR
Partner
+1 253 203 13220
kschipper@nai-pp.com

ARIE SALOMON, SIOR, CCIM
Principal
+1 425 586 5636
asalomon@nai-pp.com

