



Mazatlan South Tacoma Way Center

10518 S Tacoma Way, Lakewood, WA

One retail space of 1,364sf available NOW at the over 16,000sf of Mazatlan S. Tacoma Way Center. Join fine businesses LaCasa de Sharon, Cham Garden, Mazatlan Restaurant, and more at the newly painted strip mall. The retail building offers fantastic street exposure, ample parking with multiple points of access, and is within minutes of the I-5/SR-512 interchange. South Tacoma Way/Pacific Hwy is lined with commercial businesses and transit stops, which provide the local residential neighborhoods behind it the benefit of many close-proximity amenities.

Property Overview

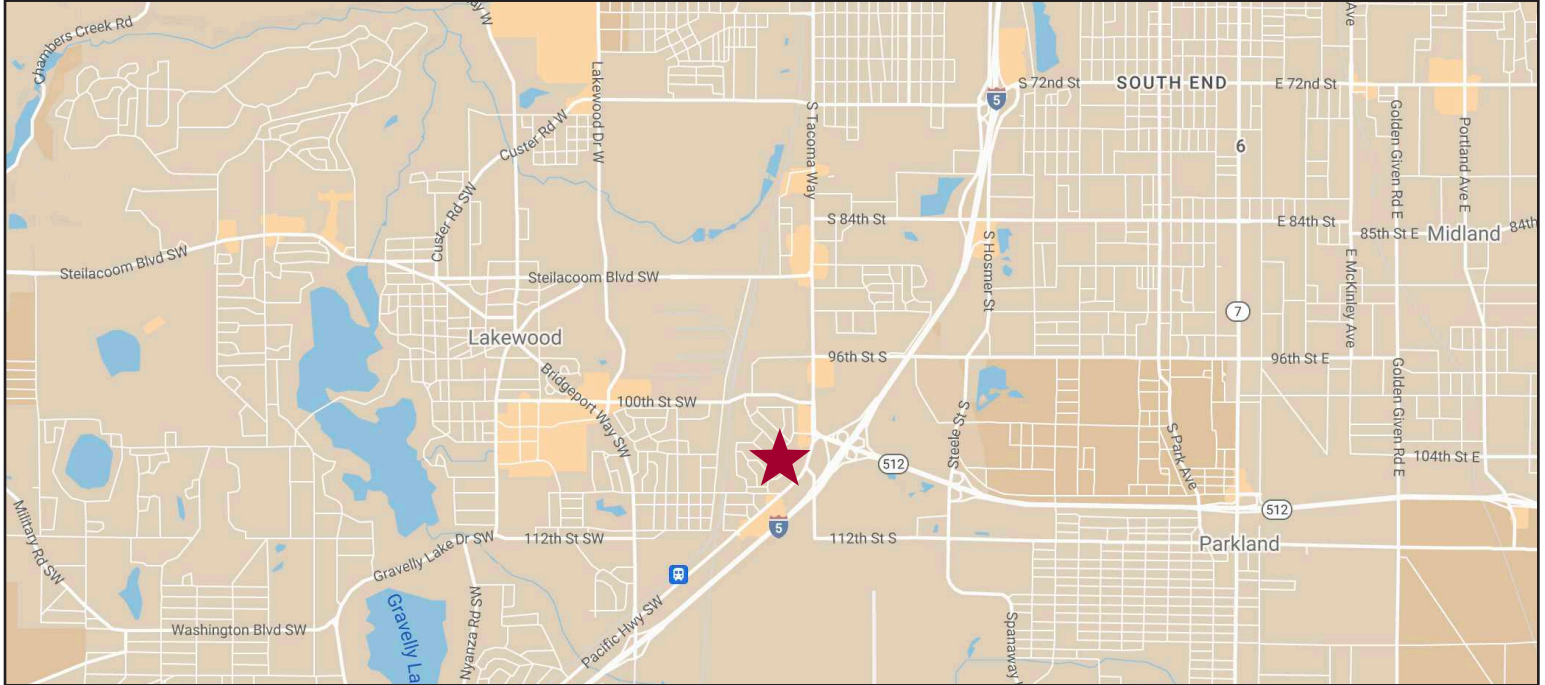
- Retail center anchored by Mazatlan Restaurant
- Located on S. Tacoma Way
- Close to I-5/SR-512 interchange
- Open space plan retail
- Available Space: 1,364sf
- Offering lease rate is \$20/sf/yr NNN

DISCLAIMER: The above information has been secured from sources believed to be reliable, however, no representations are made to its accuracy. Prospective tenants or buyers should consult their professional advisors and conduct their own independent investigation. Properties are subject to change in price and/or availability without notice.



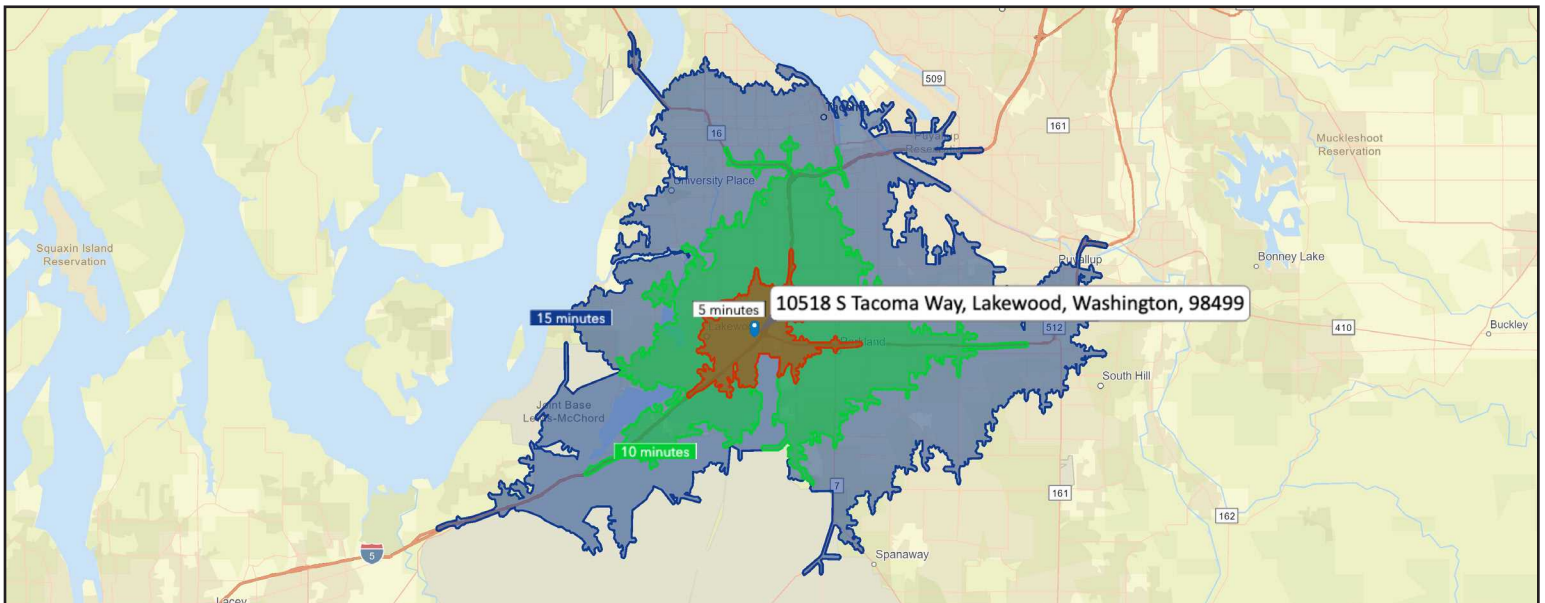


REGIONAL MAP



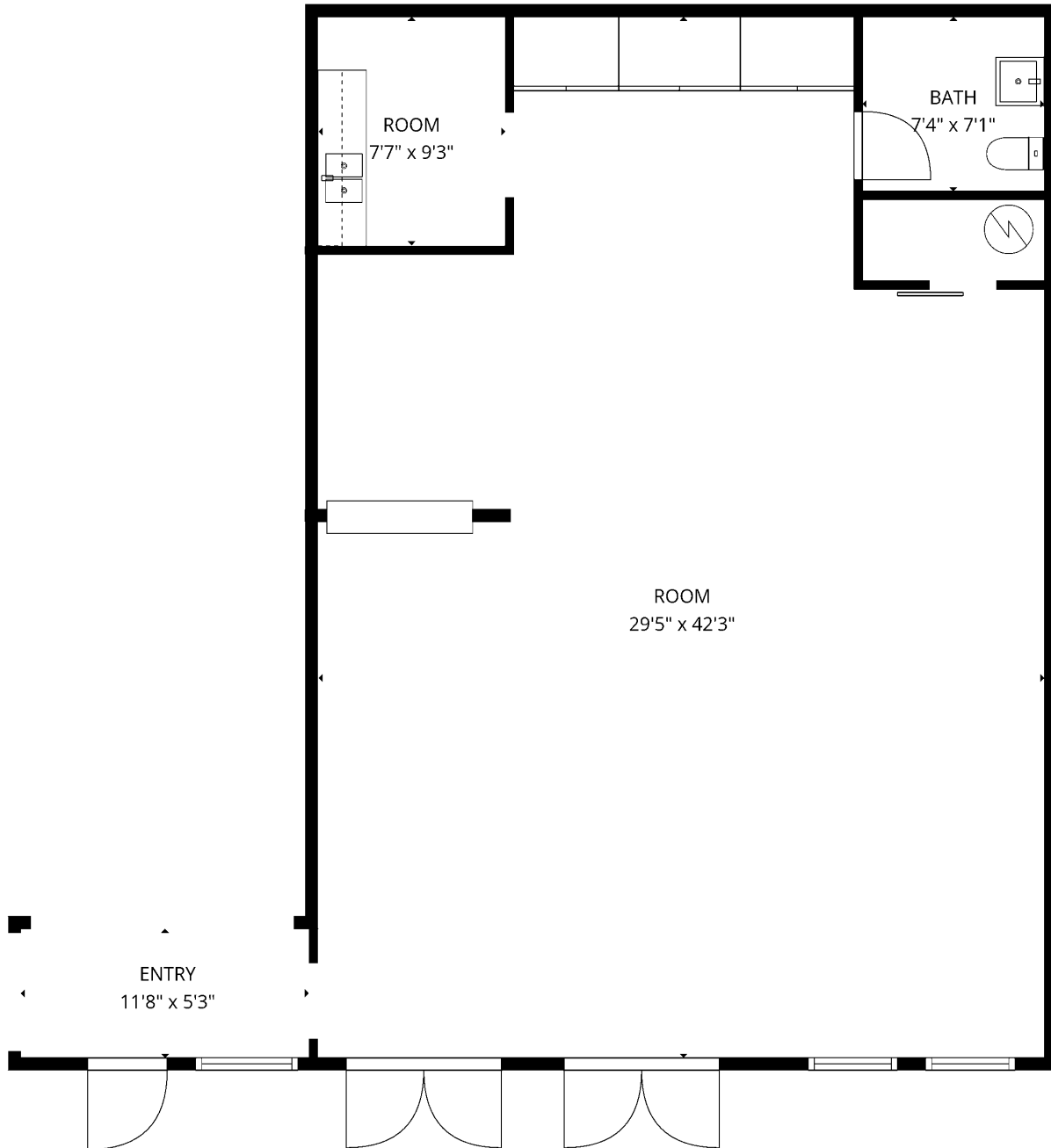
DEMOGRAPHICS

2024 Population	1 Mile	3 Miles	5 Miles
	10,083	98,594	253,859
2024 Household Income	1 Mile	3 Miles	5 Miles
	\$51,413	\$66,303	\$74,336



1120 Gravelly Lake Dr SW Ste 2
Lakewood, Washington 98499
johnson-commercial.com

Tim Johnson
timothy@johnson-commercial.com
(253) 209-9999



TOTAL: 1307 sq. ft
1st floor: 1307 sq. ft
EXCLUDED AREAS: WALLS: 85 sq. ft

FLOOR PLAN CREATED BY CUBICASA APP. MEASUREMENTS DEEMED HIGHLY RELIABLE BUT NOT GUARANTEED.

