



## Lakewood Natural Medicine

8909-D Gravelly Lake Dr SW, Lakewood, WA 98499

Space is now available for lease in this nicely updated medical office on Gravelly Lake Dr., near busy intersection of Steilacoom Blvd. and Lakewood Dr. This attractive office space is move-in ready and ADA compliant, and features a spacious front entrance, a waiting area with tiled floor and natural light, a reception counter, and three private offices.

### Property Overview

- Three private offices
- Reception counter
- Spacious waiting area
- ADA accessible Restroom
- Ample parking and easy access
- Suite 8909-D: 1,105 SF
- Lease rate: \$18 psf/yr NNN
- Lease Term: 3-5 years, negotiable

DISCLAIMER: The above information has been secured from sources believed to be reliable, however, no representations are made to its accuracy. Prospective tenants or buyers should consult their professional advisors and conduct their own independent investigation. Properties are subject to change in price and/or availability without notice.



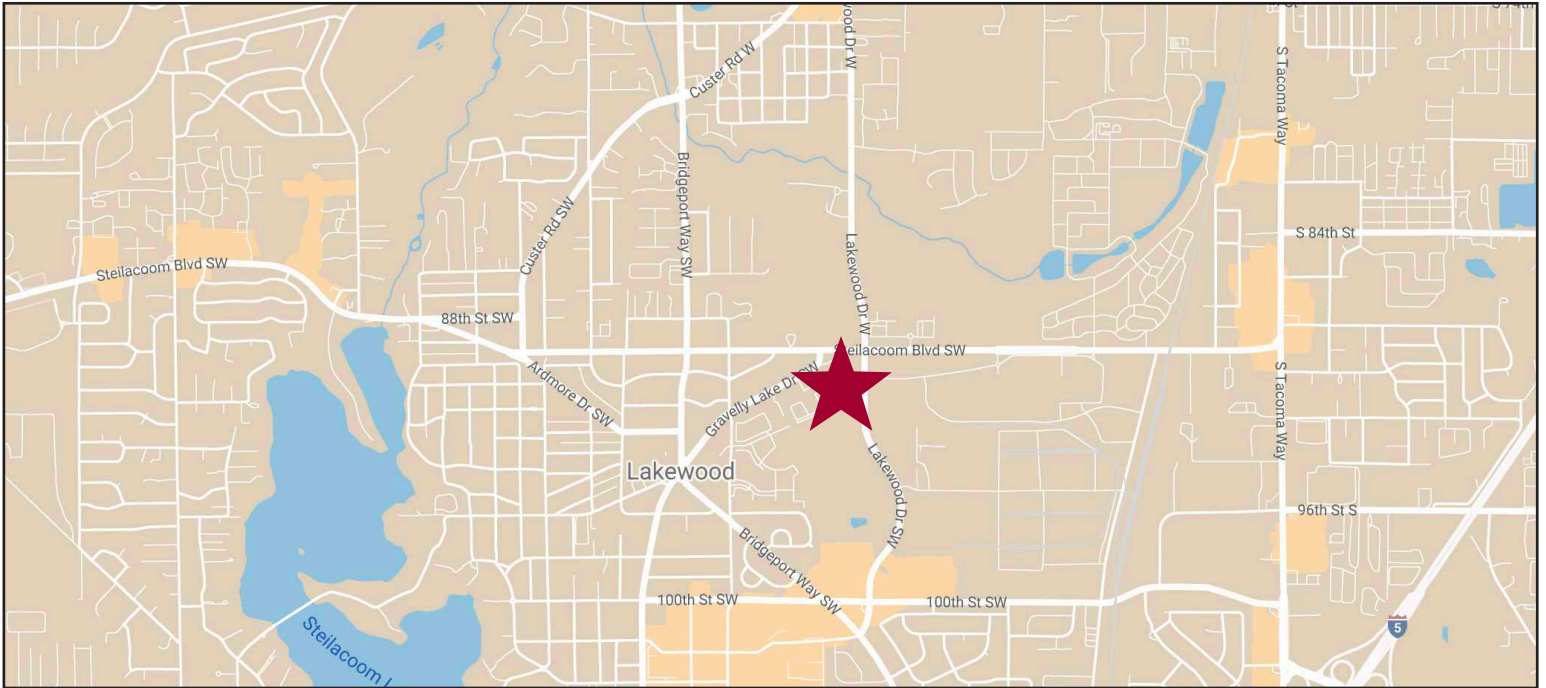
11120 Gravelly Lake Dr SW Ste 2  
Lakewood, Washington 98499  
johnson-commercial.com

**Timothy Johnson**  
timothy@johnson-commercial.com  
O: (253) 589-9999 C: (253) 209-9999



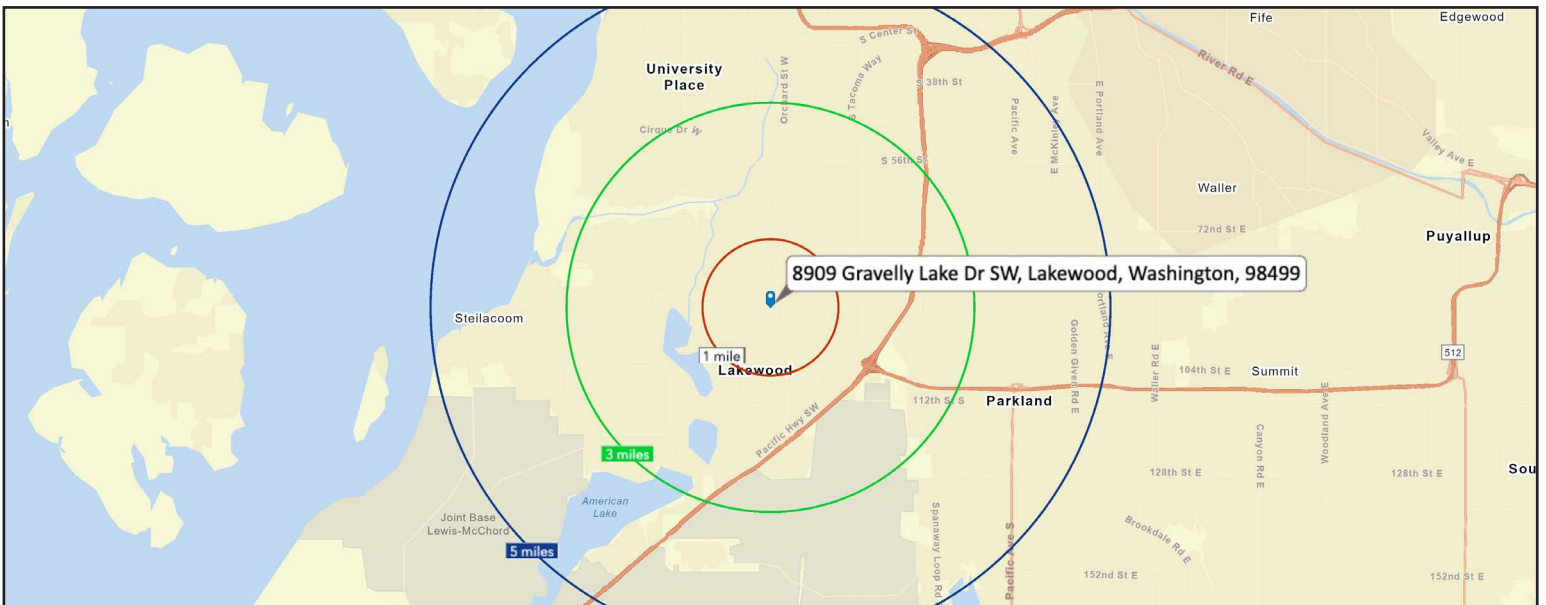
# Lakewood Medical Office Available

## REGIONAL MAP



## DEMOGRAPHICS

2022 Population	1 Mile	3 Miles	5 Miles
	12,007	104,816	255,757
2022 Household Income	1 Mile	3 Miles	5 Miles
	\$53,402	\$63,545	\$67,195



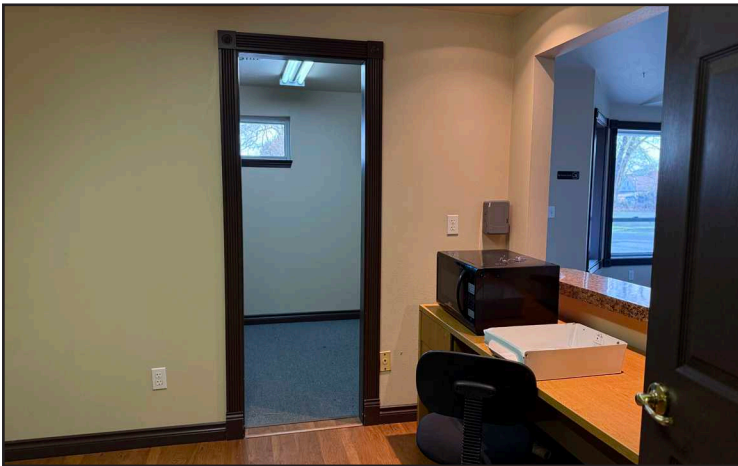


# Lakewood Medical Office Available

## EXTERIOR PHOTOS

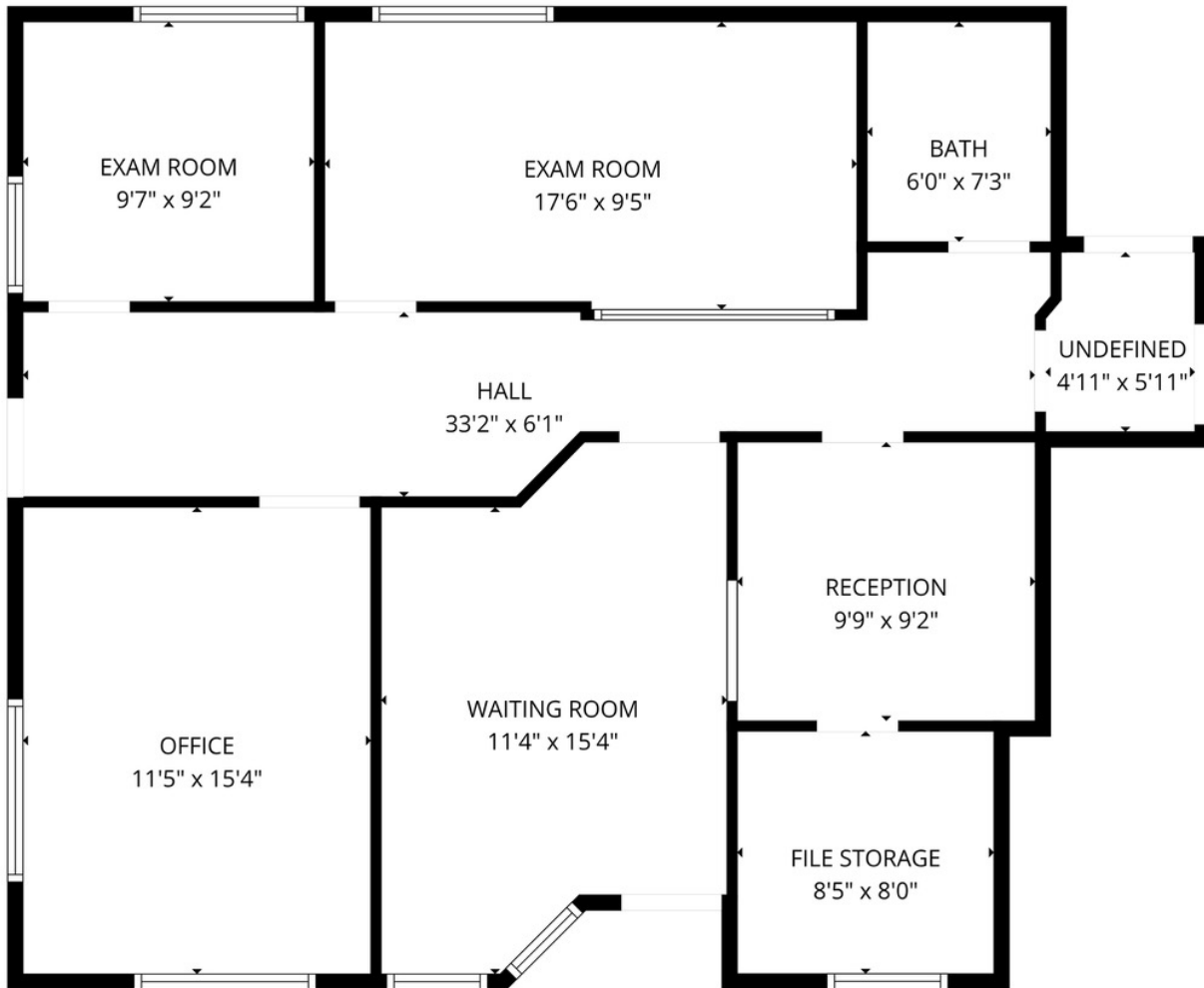


## INTERIOR PHOTOS





## FLOOR PLAN SKETCH



FLOOR PLAN CREATED BY CUBICASA APP. MEASUREMENTS DEEMED HIGHLY RELIABLE BUT NOT GUARANTEED.



## FLOOR PLAN SKETCH



FLOOR PLAN CREATED BY CUBICASA APP. MEASUREMENTS DEEMED HIGHLY RELIABLE BUT NOT GUARANTEED.