



SUBLEASE



LINCOLN SQUARE NORTH

10401 NE 8TH | BELLEVUE, WA



BRODERICK
• GROUP •

21,844 - 87,670 SF

AVAILABLE 7/1/2026

LINCOLN SQUARE NORTH

AVAILABILITY

FLOOR 9:
21,942 SF

FLOOR 8:
21,942 SF

FLOOR 7:
21,942 SF

FLOOR 6:
21,844 SF

SUBLEASE

- + 87,670 SF
- + AVAILABLE:
July 1, 2026
- + EXPIRATION:
November 30, 2032
- + RATE:
Negotiable
- + Fully Furnished, plug
and play sublease*
- + Unimpeded west views
- + PARKING:
2.0/1,000 RSF

*FF&E may be made available to a subtenant contingent on sublease economics.

The information contained herein has been given to us by the owner or sources which we deem reliable. We have no reason to doubt its accuracy, but we do not guarantee it. Prospective tenants should carefully verify all information contained herein.



SUBLEASE

LINCOLN SQUARE NORTH

+ BELLEVUE'S PREMIER
OFFICE COMPLEX +



SUBLEASE

LINCOLN SQUARE NORTH

FLOOR 6 | 21,844 SF | AVAILABLE 7/1/2026



GRANT YERKE | 425.646.5264 | yerke@broderickgroup.com

BRODERICK
• GROUP •

10401 NE 8TH
BELLEVUE, WA



SUBLEASE

LINCOLN SQUARE NORTH

FLOOR 7 | 25,528 SF | AVAILABLE 7/1/2026



GRANT YERKE | 425.646.5264 | yerke@broderickgroup.com



BRODERICK
• GROUP •

10401 NE 8TH
BELLEVUE, WA

SUBLEASE

LINCOLN SQUARE NORTH

FLOOR 8 | 21,942 SF | AVAILABLE 7/1/2026



GRANT YERKE | 425.646.5264 | yerke@broderickgroup.com



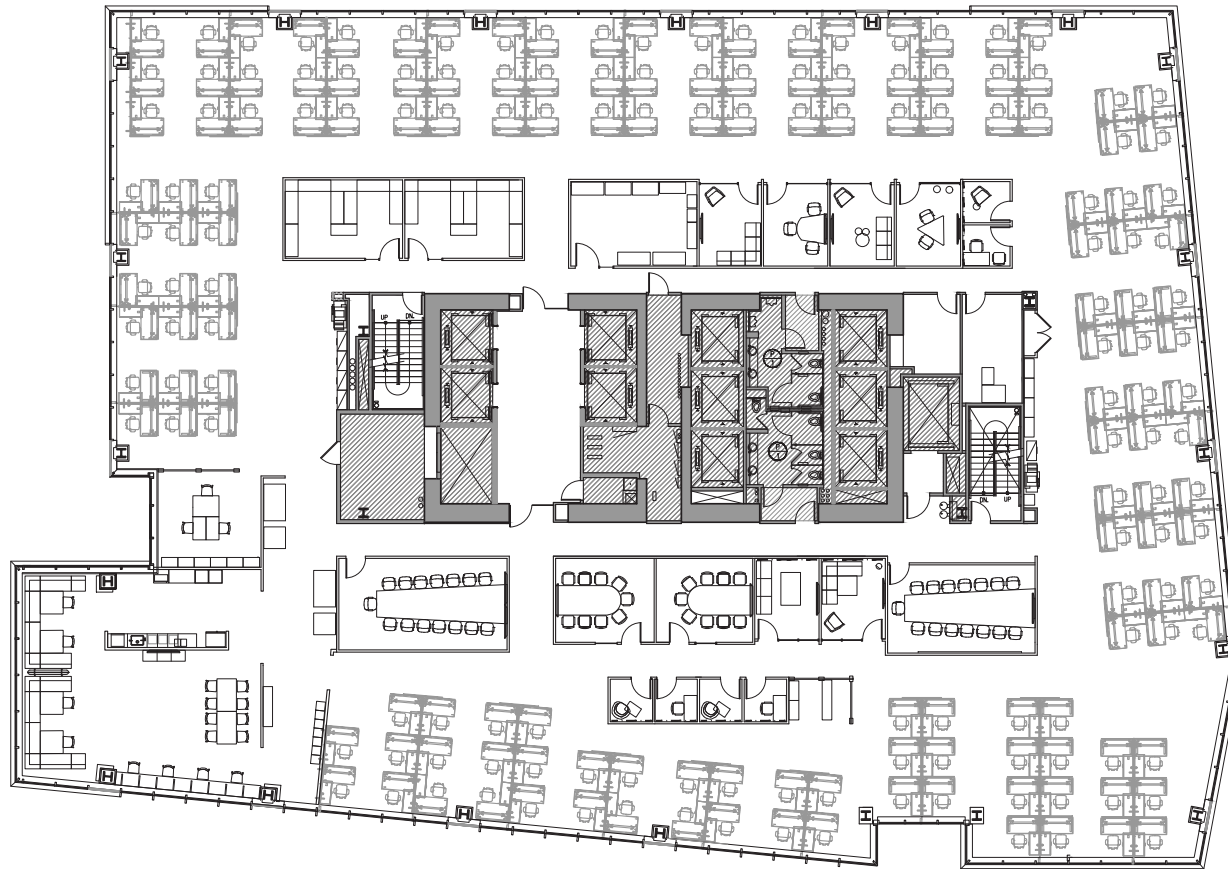
BRODERICK
• GROUP •

10401 NE 8TH
BELLEVUE, WA

SUBLEASE

LINCOLN SQUARE NORTH

FLOOR 9 | 21,942 SF | AVAILABLE 7/1/2026



GRANT YERKE | 425.646.5264 | yerke@broderickgroup.com



BRODERICK
• GROUP •

10401 NE 8TH
BELLEVUE, WA