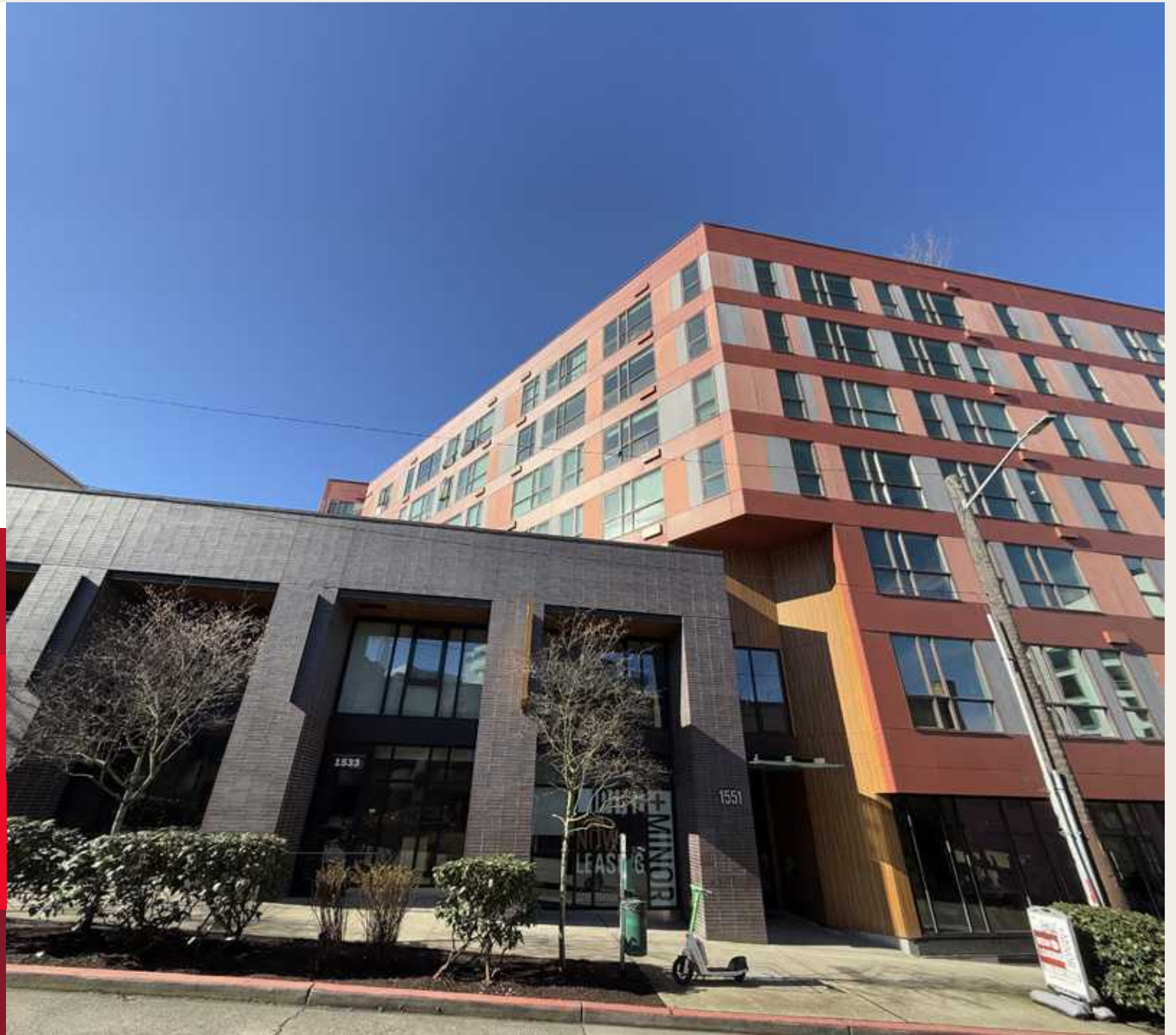


PINE+ MINOR

pineminor.com

Retail
for
Lease

1551 Minor Avenue
Seattle, WA 98101



Join Seattle's vibrant Capitol Hill neighborhood at the Pine + Minor Apartments.

This space offers 2,127 SF of ground floor retail on the corner of Pine and Minor, providing exceptional visibility and accessibility. This location is surrounded by amazing retailers including VooDoo Donuts, Melrose Market, Terra Plata, and more!





Highlights

- With a Walk Score of 99, daily errands and shopping are convenient for both customers and employees
- The Paramount Theatre is a short 5-minute walk away, Pike Place Market is less than 20-minutes away
- Close to major transit routes, facilitating easy commutes and increased patronage



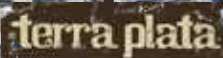


COMING SOON TO
1200 STEWART STREET
TRADER JOE'S
LIVE NATION
Sonder

Trader Joe's
3,000 capacity Live Nation venue
124 room Sonder Hotel
1,000 apartment units



PINE+
MINOR



Olive Way

Pine St

Pike St

Minor Ave

WESTLAKE CENTER



NORDSTROM
Flagship store & offices



DEMOGRAPHICS



AVERAGE HOUSEHOLD INCOME

1-Mile: \$131,097
2-Mile: \$137,360
3-Mile: \$142,821



POPULATION

1-Mile: 107,144
2-Mile: 199,534
3-Mile: 264,969



HOUSEHOLDS

1-Mile: 67,354
2-Mile: 116,826
3-Mile: 144,100



EMPLOYEES

1-Mile: 200,255
2-Mile: 282,071
3-Mile: 346,266



PINE+ MINOR

1551 Minor Avenue
Seattle, WA 98101

Madeline Stutz

madelines@wccommercialrealty.com
206.422.7598

Avery Connell

avery@wccommercialrealty.com
206.475.9367

DISCLAIMER: The above information has been secured from sources believed to be reliable, however, no representations are made to its accuracy. Prospective tenants or buyers should consult their professional advisors and conduct their own independent investigation. Site plan and configuration are subject to change. Properties are subject to change in price and/or availability without notice. West Coast Commercial Realty, LLC

MEMBER OF  SOURCE  CBA  Cisc  CoStar

WCCR | West Coast
Commercial
Realty

206 283 5212
wccommercialrealty.com

