

FOR LEASE

ALTERRA 512

*±11.35 AC IOS Site Available
for Lease in Tacoma*

1206 112TH ST E | TACOMA, WA

KIDDER.COM

OWNED BY



EXCLUSIVELY LEASED BY





IOS Site Available with Great Access to I-5 & the Port of Tacoma

±11.35 AC total - Site divisions considered

- Site C: ±4.80 AC
- Site D: ±5.20 AC
- Site E: ±1.35 AC

7 total buildings/structures totaling 23,881 SF - main buildings provide 8,828 SF (10 GL) & 7,706 SF (6 GL)

Fenced, partially paved & lit

ECOR/Heavy Industrial zoning → [ZONING TABLE](#)

Uses include equipment rental, trailer storage, trailer repair, and more

Immediate access and visibility to 112th St & SR-512

Excellent access to I-5 and the Port of Tacoma via multiple routes

CALL
FOR RATES

NOW
AVAILABLE



SITE PLAN



23,881 SF
TOTAL AVAILABLE BUILDING AREA

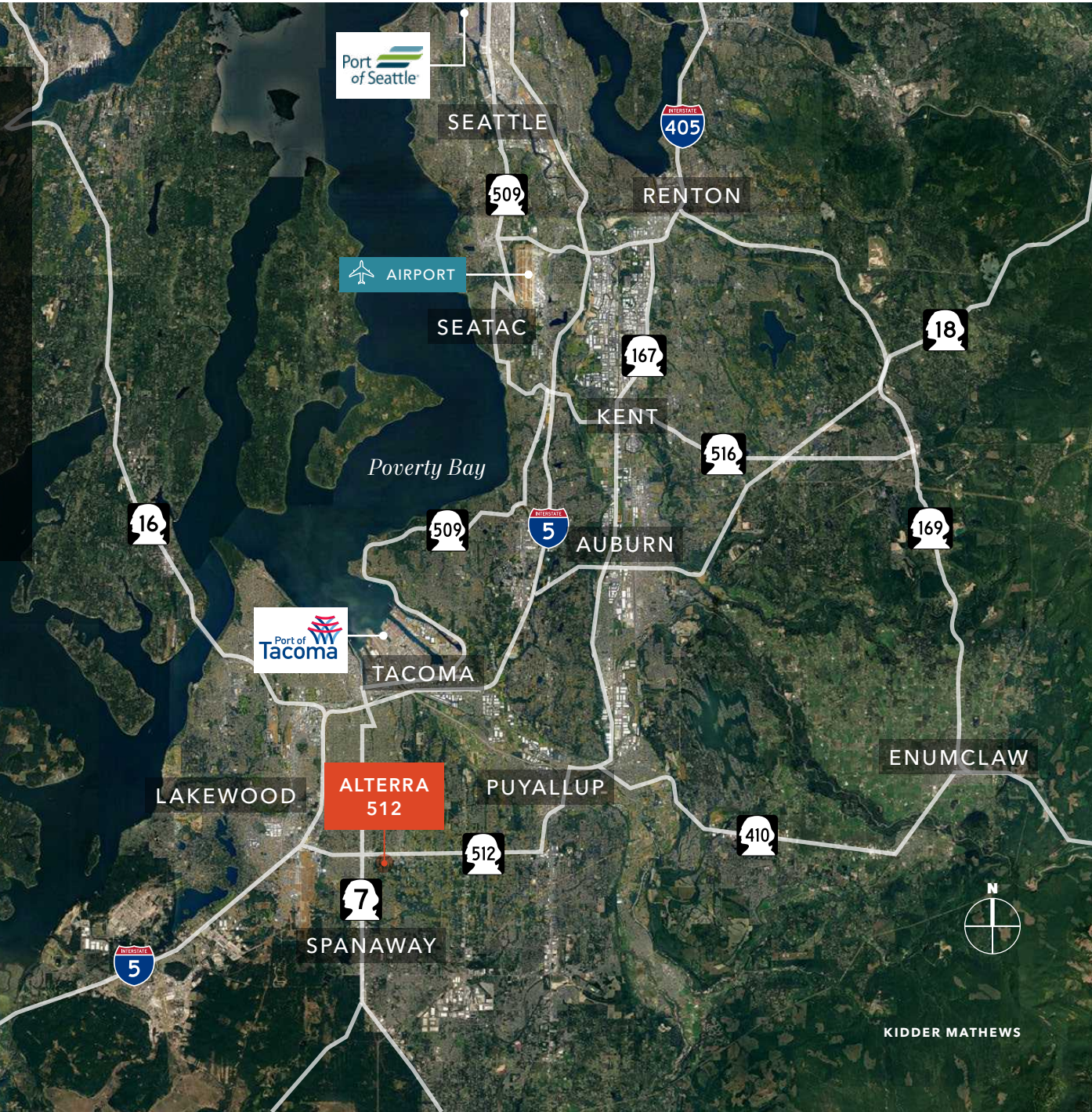
±11.35 AC
COMBINED APPROX. USABLE LAND

7 TOTAL BUILDINGS/STRUCTURES

- 23,881 SF total
- Multiple office structures with various total SF
- 18 grade-level doors
- 12.5' - 28' clear height

DRIVE TIMES

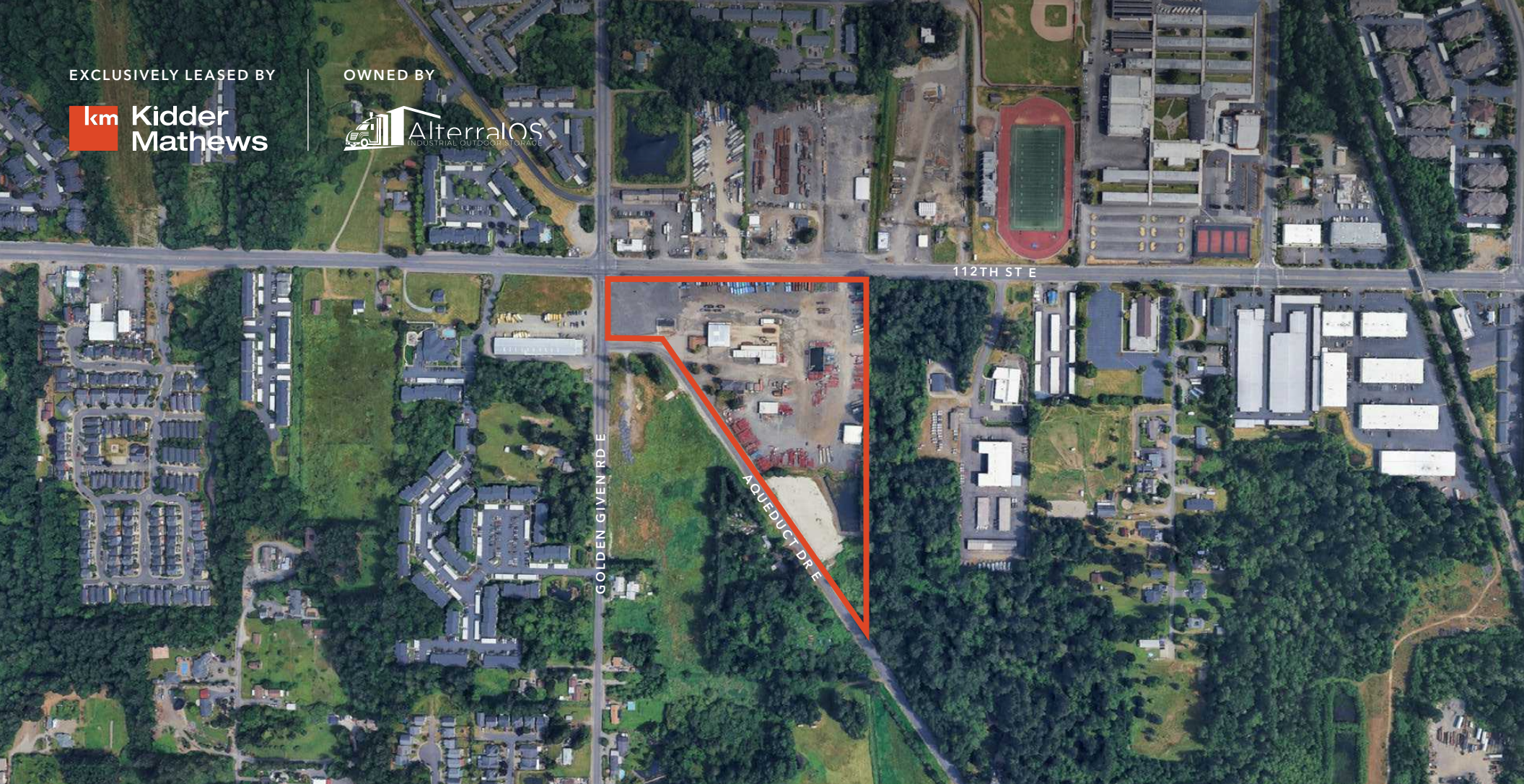
HWY 512	1 MINUTE
HWY 7	3 MINUTES
I-5	7 MINUTES
HWY 167	11 MINUTES
HWY 410	12 MINUTES
HWY 509	14 MINUTES



EXCLUSIVELY LEASED BY



OWNED BY



ALTERRA 512

*For more information,
please contact*

TRAVIS STANAWAY
Senior Vice President
206.248.6526
travis.stanaway@kidder.com

MATT MURRAY, SIOR
Executive Vice President
206.248.6541
matt.murray@kidder.com

DANE DAHLINE, SIOR
Senior Vice President
206.248.6519
dane.dahline@kidder.com

This information supplied herein is from sources we deem reliable. It is provided without any representation, warranty, or guarantee, expressed or implied as to its accuracy. Prospective Buyer or Tenant should conduct an independent investigation and verification of all matters deemed to be material, including, but not limited to, statements of income and expenses. Consult your attorney, accountant, or other professional advisor. All Kidder Mathews designs are the sole property of Kidder Mathews. Branded materials and layouts are not authorized for use by any other firm or person.

