



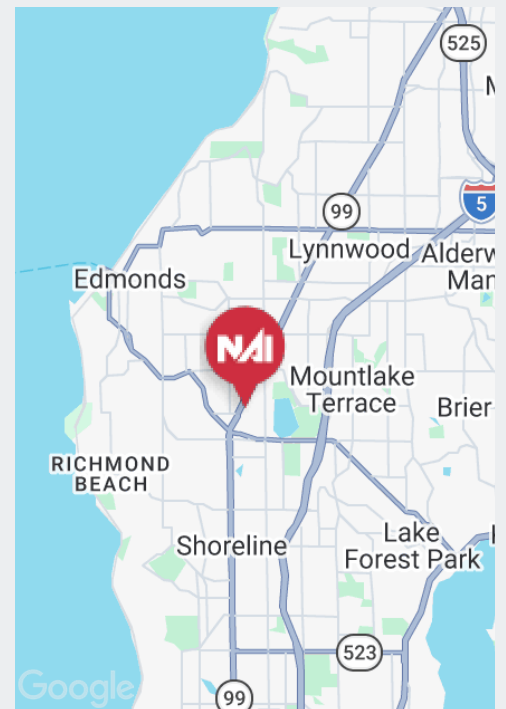
For Lease | Medical/Dental Office

23416 Highway 99, Edmonds, WA

Prime medical/dental office space available for lease with Highway 99 visibility.

PROPERTY HIGHLIGHTS

- + Suite "D" Available: 950 SF
- + Former Dental Office Space
- + Plumbed for Dental/Medical
- + Ground Floor Space
- + Ample Parking
- + Fantastic Visibility and Frontage Along Hwy 99
- + **LEASE RATE: \$22/sf/year plus NNN**



KYLE STERLING

Partner
+1 425 586 5608
ksterling@nai-psp.com

DANIEL VEDMED

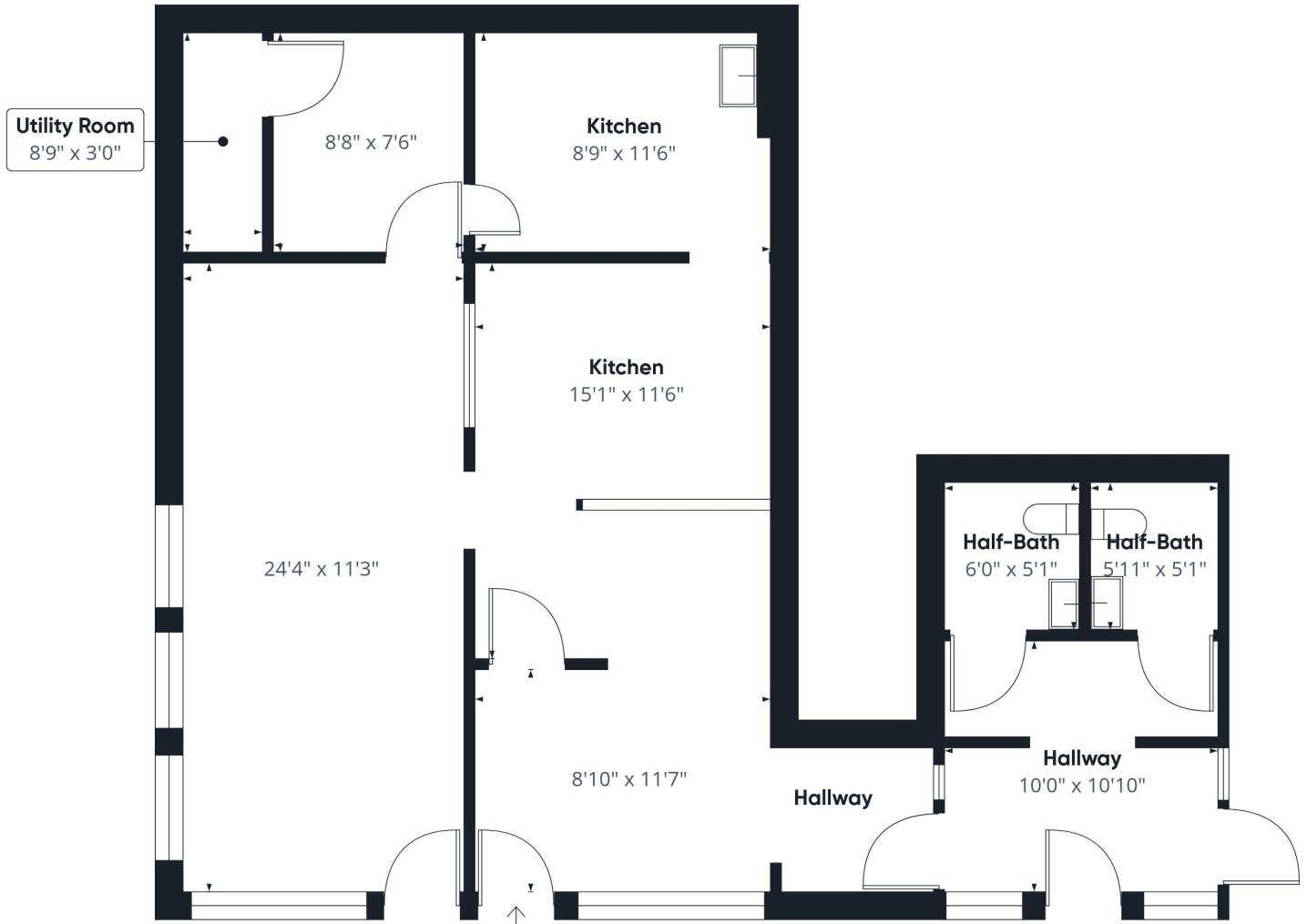
Associate
+1 425 600 1925
dvedmed@nai-psp.com



THE INFORMATION CONTAINED HEREIN HAS BEEN GIVEN TO US BY THE OWNER OF THE PROPERTY OR OTHER SOURCES WE DEEM RELIABLE, WE HAVE NO REASON TO DOUBT ITS ACCURACY, BUT WE DO NOT GUARANTEE IT. ALL INFORMATION SHOULD BE VERIFIED PRIOR TO PURCHASE OR LEASE.

nai-psp.com

Floor Plan



*Measurements are approximate and not to scale. This floor plan is intended for illustration only.



KYLE STERLING

Partner

+1 425 586 5608

ksterling@nai-pp.com

DANIEL VEDMED

Associate

+1 425 600 1925

dvedmed@nai-pp.com



*Medical/Dental office
for lease in Edmonds*



KYLE STERLING
Partner
+1 425 586 5608
ksterling@nai-psp.com

DANIEL VEDMED
Associate
+1 425 600 1925
dvedmed@nai-psp.com

