

# FOR LEASE



## RETAIL SUITE

8318 W Gage Blvd, Suite F | Kennewick, WA 99336



<b>AVAILABLE SUITE</b>	Suite F
<b>LEASE RATE</b>	\$15.00 PSF /YR
<b>EST. NNN RATE</b>	\$3.75 PSF
<b>SUITE F SIZE</b>	±2,145 SF
<b>YEAR BUILT</b>	1977
<b>TOTAL BUILDING SIZE</b>	±8,272 SF
<b>PARCEL NO.</b>	130994000013002
<b>ZONING</b>	Commercial General
<b>LOT SIZE</b>	±0.58 AC

**KIEMLEHAGOOD**

**MICHAEL PETRILLO**

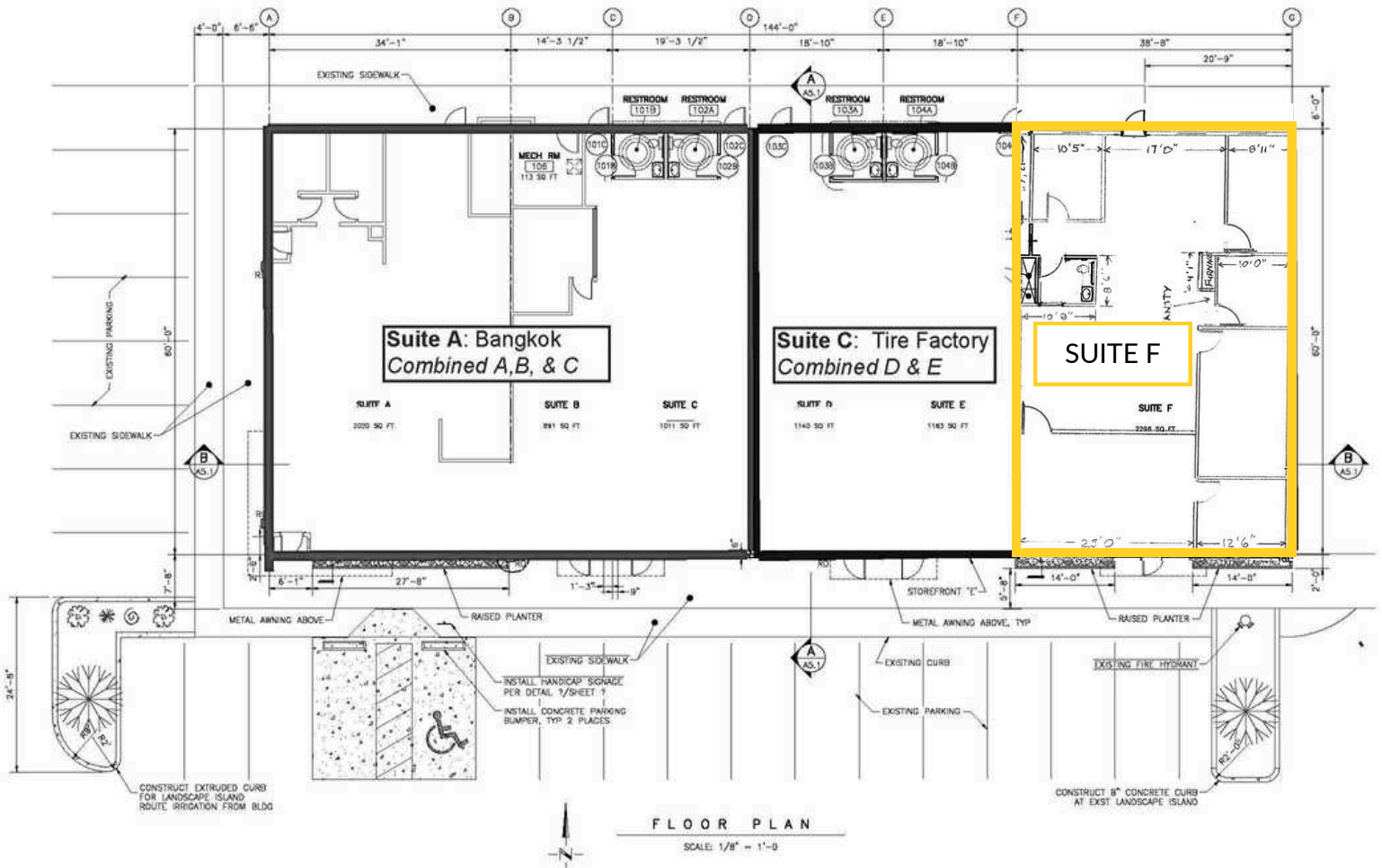
509.862.5747

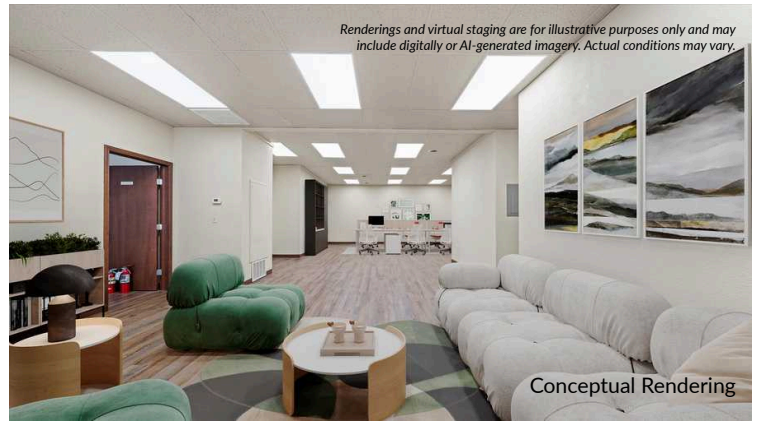
michael.petrillo@kiemlehagood.com

Now available: a ±2,145 SF commercial suite in a well-located multi-tenant building with ample on-site parking. Monument signage is available along Gage Blvd for additional visibility.

The property is anchored by a popular restaurant, driving strong daily traffic and visibility for neighboring tenants. The open-concept office space includes five individual office suites, an open reception area, and a large centralized area for a potential cubicle-style desk layout or meeting space.

Situated in a high-visibility location near Columbia Center Mall, Costco, and numerous national and local retailers, this space benefits from excellent exposure and convenient access. Ideal for retail, service, or office users seeking a prime location in an active commercial corridor.







# RETAIL SUITE

8318 W Gage Blvd, Suite F | Kennewick, WA 99336

VIEW LOCATION



**MICHAEL PETRILLO**

509.862.5747 | michael.petrillo@kiemlehadood.com



No warranty or representation, expressed or implied, is made by Kiemle Hagood, its agents or its employees as to the accuracy of the information contained herein. All information furnished is from sources deemed reliable and submitted subject to errors, omissions, change of terms and conditions, prior sale, lease or financing, or withdrawal without notice. No one should rely solely on the above information, but instead should conduct their own investigation to independently satisfy themselves. Kiemle Hagood respects the intellectual property of others: If you believe the copyright in your work has been violated through this Website, please contact our office for notice of claims of copyright infringement. For your complaint to be valid under the Digital Millennium Copyright Act of 1998 (DMCA), you must provide the following information when providing notice of the claimed copyright infringement: Identify the material on the Website that you believe infringes your work, with enough detail so that we may locate it on the Website; provide your address, telephone number and email address; provide a statement that you have a good faith belief that the disputed use is not authorized by the copyright owner, its agent, or the law; provide a statement that the information in the notification is accurate, and under penalty of perjury, that the complaining party is authorized to act on behalf of the owner of an exclusive right that is allegedly infringed; and provide your physical or electronic signature. Upon receiving your complaint, Kiemle Hagood will, upon review, remove content that you believe infringes your copyright if the complaint is found to be valid.

## OFFICE LOCATIONS

SPOKANE | COEUR D'ALENE | TRI-CITIES | MISSOULA

7025 W GRANDRIDGE BLVD, SUITE B-2  
KENNEWICK, WA 99336