

# FOR LEASE

Highway 101 & Del Guzzi Drive  
Port Angeles, WA 98362



**OLYMPIC PLAZA**  
Jamie Firth | Justin Holmes

First Western Properties—Tacoma Inc. | 253.472.0404  
6402 Tacoma Mall Blvd, Tacoma, WA 98409 | fwp-inc.com

# HIGHWAY 101 & DEL GUZZI DR

ENDCAP 1,545 ± SF | AVAILABLE NOW!

- Site has great visibility.
- Location has great access from Highway 101.
- Site is located just 13 miles from Sequim.
- Minutes from downtown Port Angeles.
- Situated on a lighted intersection.
- Excellent retail/office opportunities.
- Large pylon sign available on Highway 101.
- Only 2 miles from the Port Angeles ferry landing.

# NEARBY TENANTS



Drive Times

Population

Average HH Income

Daytime Population

5 Minutes

6,164

\$79,631

8,319

15 Minutes

24,113

\$90,884

20,811

30 Minutes

50,958

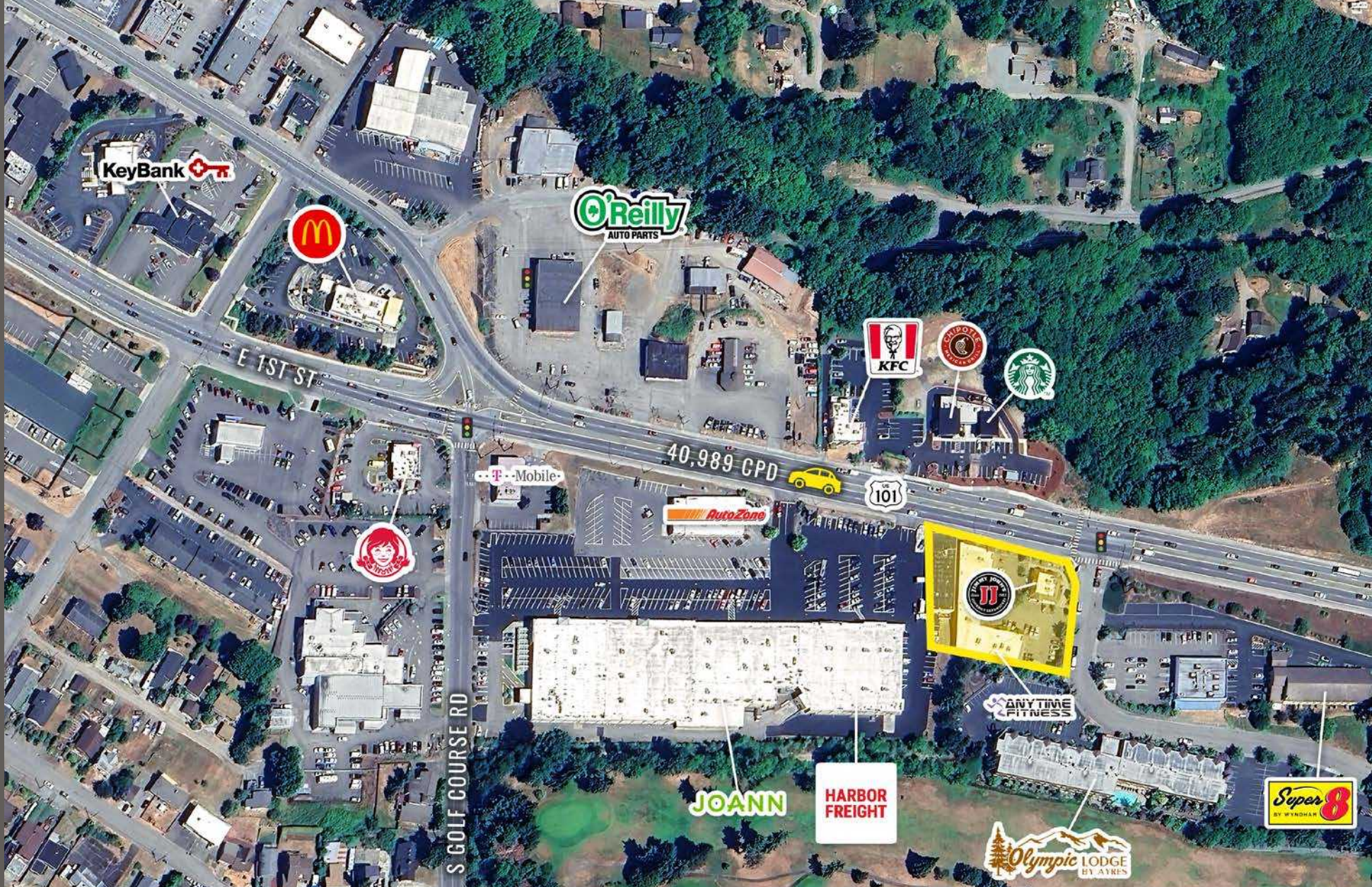
\$99,853

43,421

Regis - 2026



LOCATION DETAILS



Located directly along  
HWY 101

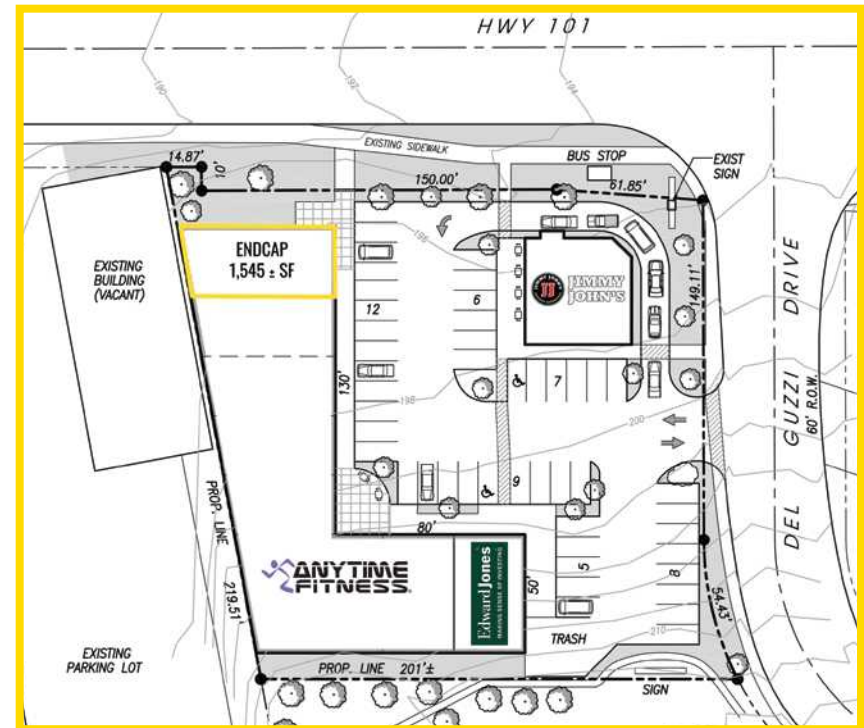


Located moments from  
downtown Port Angeles



40,989 CPD  
HWY 101

SITE PLAN



TACOMA | KIRKLAND | PORTLAND | SEATTLE

RELATIONSHIP FOCUSED.  
RESULTS DRIVEN.

JAMIE FIRTH

📞 253.284.3649

✉️ jamie@firstwesternproperties.com

JUSTIN HOLMES

📞 253.447.2282

✉️ justin@firstwesternproperties.com

OLYMPIC PLAZA

SMOKE N' HOT  
ESPRESSO

ANYTIME  
FITNESS

BRONZE BAY  
TANNING SALON

ZUMBA fitness RIPPED THE ONE YOU'VE BEEN PROMISED YOGA PILATES

YOUR SIGN HERE

AVAI

**1**  
FIRST  
WESTERN  
PROPERTIES

First Western Properties—Tacoma Inc. | 253.472.0404  
6402 Tacoma Mall Blvd, Tacoma, WA 98409 | fwp-inc.com

© First Western Properties, Inc. DISCLAIMER: The above information has been secured from sources believed to be reliable, however, no representations are made to its accuracy. Prospective tenants or buyers should consult their professional advisors and conduct their own independent investigation. Properties are subject to change in price and/or availability without notice.