



Retail Space for Lease at Spanaway Plaza

Spanaway Plaza boasts a high-exposure presence on busy Pacific Avenue (State Route 7). It is situated just one block from the signalized intersection of 176th St E, the proposed cross base highway, which will eventually provide access to I-5 and Joint Base Lewis-McChord, the largest Army-led joint base in the US.

Suites E and F combined are 2,650 sq. ft. The space features a large, open-area entry, two offices, two restrooms, two dressing rooms, a storage room, storefront glass, two customer doors off the parking lot, and rear service doors. Parking is ample in the lighted lot with two points of entry. The plaza offers excellent opportunities for signage on the two monument signs and the building fascia. Join fine tenants Rent-A-Center, One Main Financial, Subway, Spotted Cow, Small Foot Kids Dental, and many more at Spanaway Plaza!

Property Overview

- Mostly open floor plan
- 2 restrooms
- Ample lighted parking
- HVAC units recently replaced
- Suites E & F are combined
- Available Space: 2,650sf
- Lease Rate: 20.00/sf/yr NNN
- NNN Estimate: \$9.25/sf/yr

DISCLAIMER: The above information has been secured from sources believed to be reliable, however, no representations are made to its accuracy. Prospective tenants or buyers should consult their professional advisors and conduct their own independent investigation. Properties are subject to change in price and/or availability without notice.

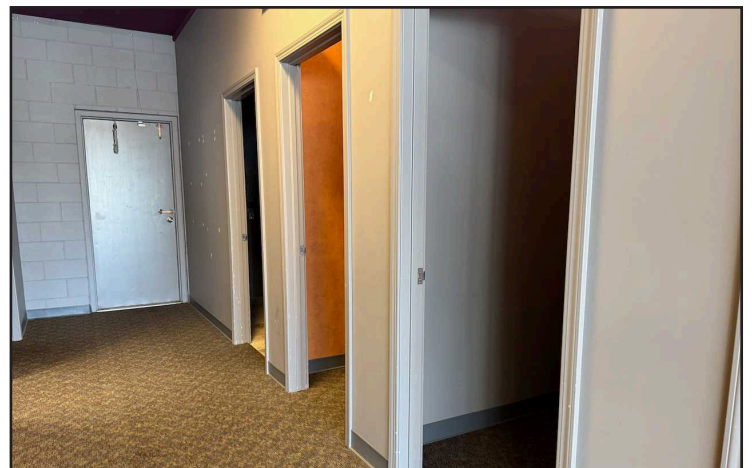




EXTERIOR PHOTOS



INTERIOR PHOTOS



11120 Gravelly Lake Dr SW Ste 2
Lakewood, Washington 98499
johnson-commercial.com (253) 589-9999

Margot Johnson

margot@johnson-commercial.com
O: (253) 589-9999 C: (253) 209-9998

Tim Johnson

timothy@johnson-commercial.com
O: (253) 589-9999 C: (253) 209-9999



FLOOR PLAN

