

BRODERICK  
• GROUP •



*the*  
SUMMIT

Summit 1: 355 110th Avenue NE  
Summit 2: 10885 NE 4th Street  
Summit 3: 320 108th Avenue NE  
BELLEVUE, WASHINGTON





THE SUMMIT IS COMPRISED OF THREE CLASS A+ OFFICE BUILDINGS WITH MODERN CONSTRUCTION IN AN URBAN CAMPUS SETTING. THE COMPLEX IS LEED GOLD CERTIFIED AND FEATURES CONTEMPORARY ARCHITECTURE WITH HIGH EFFICIENCY GLASS, WHICH ALLOWS FOR A LARGE ABUNDANCE OF NATURAL LIGHT AND SPECTACULAR VIEWS OF DOWNTOWN SEATTLE, THE OLYMPIC AND CASCADE MOUNTAINS, AND MT. RAINIER.

## AMENITIES FOR A CLASS A COMMUNITY



### GREAT ROOM

Double height vaulted ceilings with recent major renovations including a game room, multi-use furniture, and new cosmetic finishes throughout



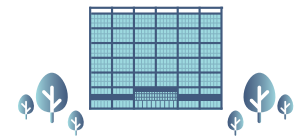
### ON-SITE FOOD SERVICE

Cafe Pogacha, offering breakfast, lunch, & catering



### CORPORATE CONFERENCE CENTER

Seating capacity up to 100  
Wifi & single touch screen panel to control in-house computer system, video conferencing



### COURTYARD

South Facing Central Courtyard with outdoor seating, water features, & green space



### ON-SITE FITNESS CENTER

3,800 SF state-of-the-art fitness center access to showers, lockers & towel service



### PARKING

Secure & covered parking with access at 110th Ave NE and 108th Ave NE



### AMAZON GO

Onsite Amazon Go offers seamless, cashierless shopping



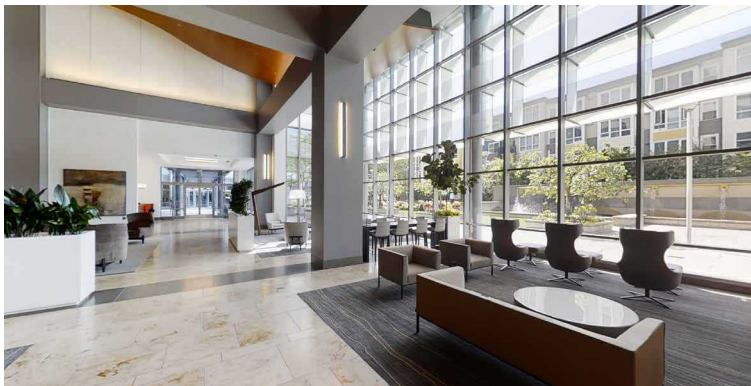
### TRANSIT/ACCESS

Half a block to the Transit Center, near the future East Link Light Rail



### WALKING DISTANCE

Walking distance to all of Downtown Bellevue's major attractions, including restaurants, retail & parks



CLICK TO TOUR THE LOBBY AREA

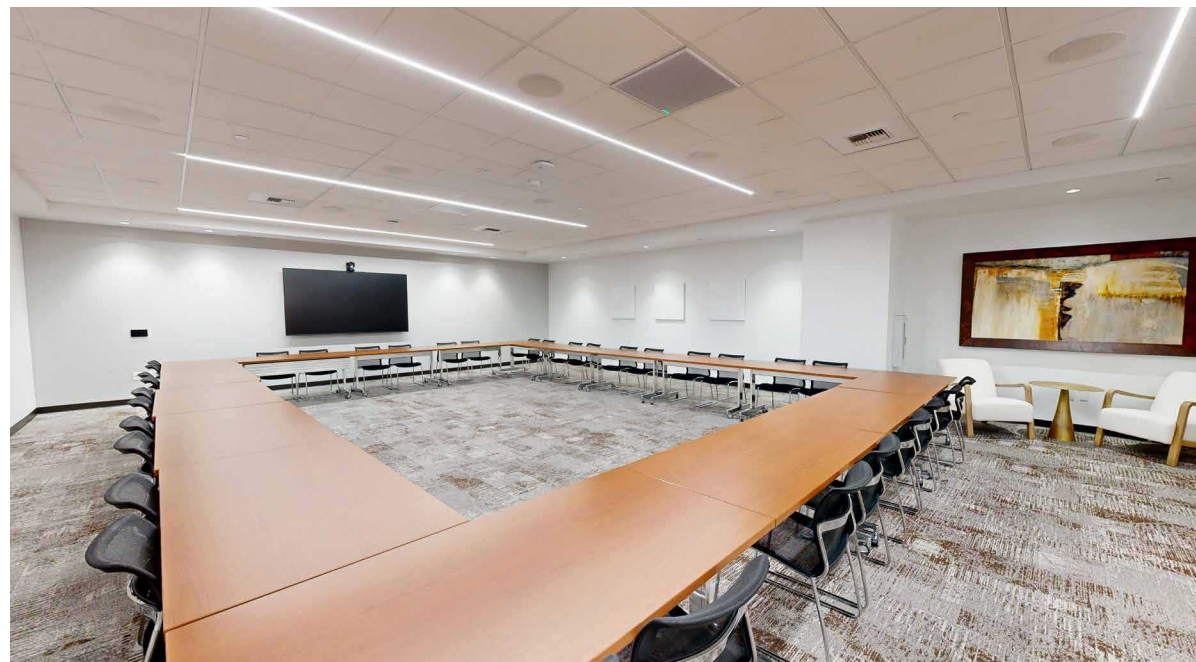
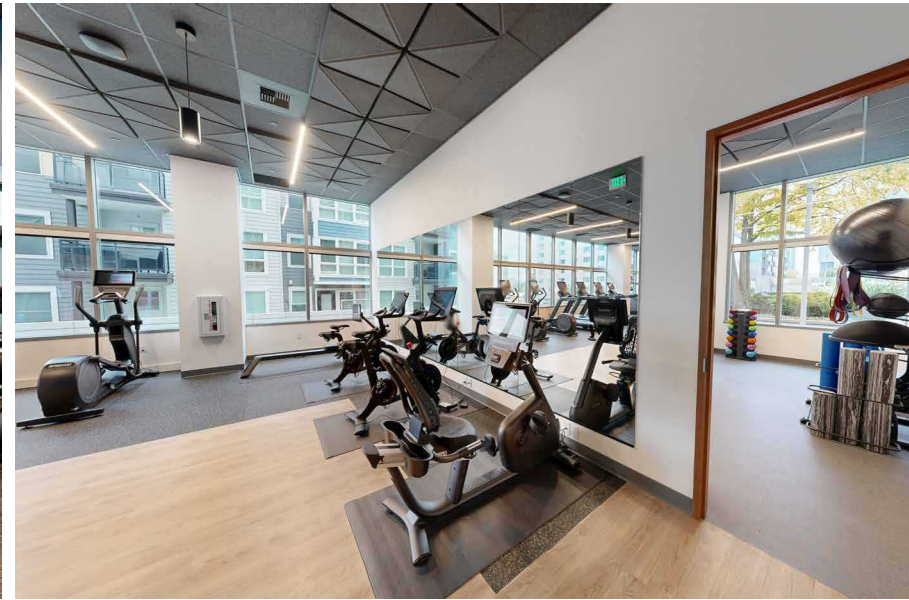


CLICK TO TOUR THE CONFERENCE ROOM







CLICK TO TOUR THE FITNESS CENTER

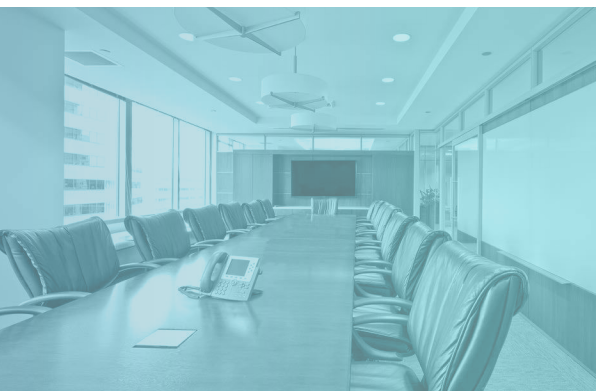
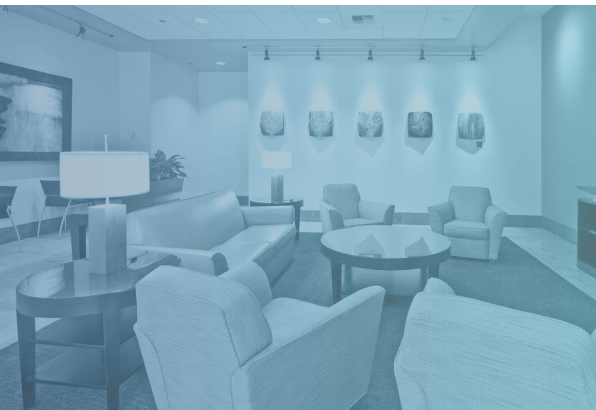
**NEWLY RENOVATED**  
**ONSITE FITNESS CENTER & CONFERENCE ROOM**  
**NOW COMPLETE!**





— AVAILABLE SPACE —

VIRTUAL TOUR	FLOOR / SUITE	RSF	AVAILABLE DATE
	<u>Floor 6 / Suite 680</u>	7,466	Now
	<u>Floor 5 / Suite 550</u>	10,171	Now
	<u>Floor 5 / Suite 510</u>	3,061	Now
	<u>Floor 4 / Suite 400</u>	24,229	Now
	<u>Floor 3 / Suite 320</u>	3,259	Now
	<u>Floor 3 / Suite 300</u>	20,990	Now



# BUILDING FACTS

<b>ADDRESS</b>	Summit 1: 355 110th Avenue NE, Bellevue, WA 98004 Summit 2: 10885 NE 4th Street, Bellevue, WA 98004 Summit 3: 320 108th Avenue NE, Bellevue, WA 98004
<b>SIZE</b>	Three Class A buildings totaling approx. 915,000 square feet on 3.5 acres Summit 1: 11 stories / 248,902 SF Summit 2: 13 stories / 290,674 SF Summit 3: 17 stories / 375,000 SF
<b>LEED / EFFICIENCY</b>	LEED Gold Certification & implementation of the Honeywell Tridium Energy Management System
<b>FLOOR PLATE</b>	Summit 1: Approximately 22,000 square foot floor plates Summit 2: Approximately 24,000 square foot floor plates Summit 3: Approximately 24,250 square foot floor plates
<b>LOCATION</b>	Corner of 108th Ave and NE 4th Street, the heart of Bellevue's thriving Central Business District
<b>ACCESS</b>	Convenient access to I-405, I-90, and SR-520
<b>PARKING</b>	2.6 permits per 1,000 rentable square feet with 2 garage access points
<b>AMENITY RICH ENVIRONMENT</b>	Amenities include the award winning Cafe Pogacha, Bright Horizons on-site child care, and a beautifully landscaped terrace with outdoor seating for the summer months.
<b>HEALTH CLUB</b>	3,800 square foot on-site Health Club including cardio machines and free weights, as well as showers, towel service and lockers available to tenants' employees.
<b>HVAC</b>	Low-temperature variable-volume fan terminal system utilizing a supply air system served by roof-top mounted air conditioning units. One VAV box (zone) per 1,200 SF.
<b>PROPERTY MANAGEMENT</b>	Top of class on-site property management and engineering provided by Urban Renaissance Group.
<b>CONFERENCE FACILITY</b>	Fully Automated Corporate Conference Center complete with wifi and single touch screen panel to control in-house computer system, video conferencing, projector, and surround sound; with seating capacity of up to 100 and separate board room.
<b>SECURITY</b>	24/7 on-site security monitoring
<b>OPERATING EXPENSES</b>	2026 estimated operating expenses are \$16.26 / RSF including electrical.
<b>CEILING HEIGHT</b>	12'8" Slab-to-Slab Height 9' Finished Ceiling Height
<b>CONSTRUCTION</b>	Post-tension, concrete slab system
<b>ELECTRICAL</b>	Overall capacity is 3.5 watts per square foot with a maximum of up to 6.0 watts per square foot.
<b>TELECOMM</b>	Fiber services are provided by Comcast, Time Warner Telecomm, Level 3 & CenturyLink.
<b>ELEVATORS</b>	The Summit is served by a total of twelve passenger elevators - Building I (5) and Building II (7). Each bank is equipped with two parking shuttle elevators operating between the lobby and the garage. Each building has a single 3,500 pound freight elevator with stainless steel paneled walls and 10' ceilings, which serves all tower floors as well as levels P1 and P2 of the parking garage.
<b>LOADING DOCK</b>	An eight-bay loading dock with 14'0" clearance is accessible from 110th Avenue NE.

*The information contained herein has been given to us by the owner or sources which we deem reliable. We have no reason to doubt its accuracy, but we do not guarantee it. Prospective tenants should carefully verify all information contained herein.*



From the Summit garage to I-405 North or South bound, the average time is 5 minutes or less by car. The building is half a block away from the Bellevue Transit Center and the future EastLink Light Rail



- HOTELS
- RESTAURANTS & DINING

### BELLEVUE SQUARE

- Nordstrom
- Crate & Barrel
- Apple
- Microsoft
- Barnes & Noble
- Macy's

### SHOPS AT BRAVERN

- Bottega Veneta
- Gucci
- Hermes
- Louis Vuitton
- Prada
- Moncler

### LINCOLN SOUTH FOOD HALL

- DOTÉ Coffee Bar
- Drip Tea
- Great State Burger
- KODE Pizza
- Seoul Bowl
- West Coast Tacos

# SUMMIT 2 SUITE 300

20,990 RSF

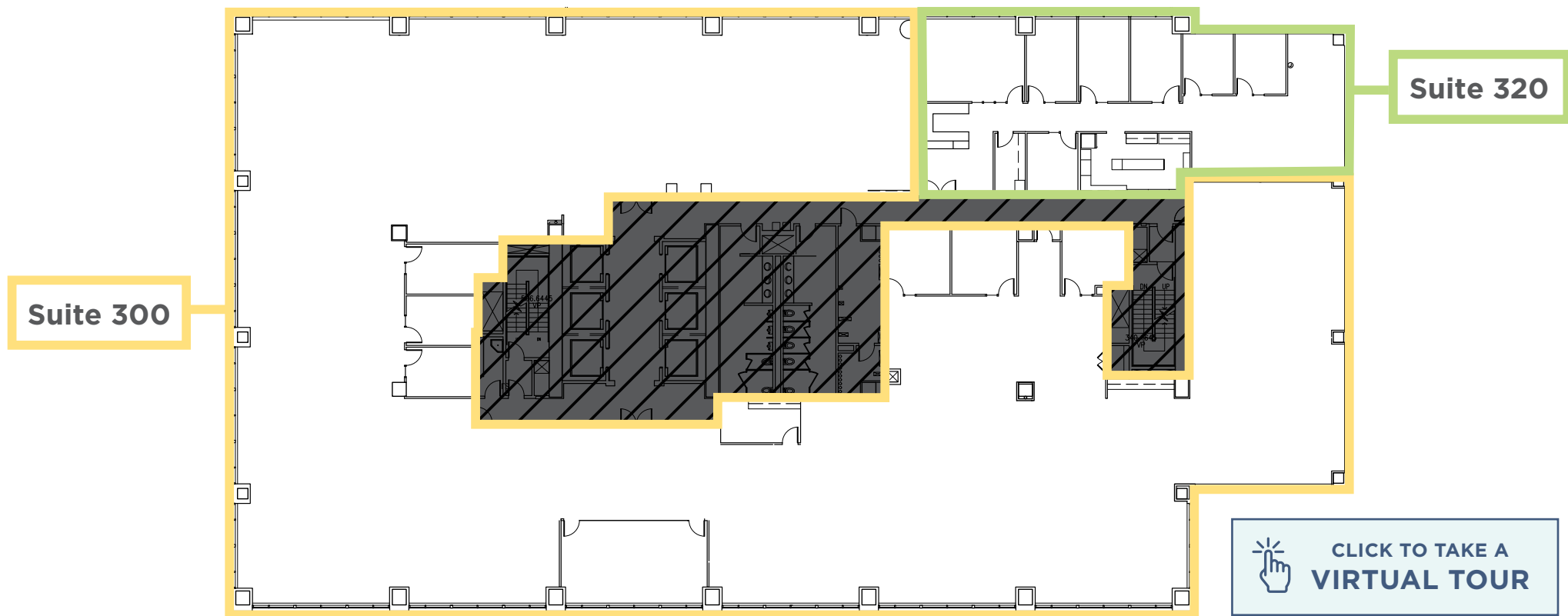
- » Double glass door entry immediately off 3rd floor lobby
- » Efficient mix of offices, open space, conference rooms, and a kitchen/breakroom

Contiguous for a Full  
Floor of 24,249 RSF

# SUMMIT 2 SUITE 320

3,259 RSF

- » Small, move-in ready suite with mix of private offices, open space for cubicles, conference room, reception, kitchen, and workroom



Suite 300

Suite 320



CLICK TO TAKE A  
VIRTUAL TOUR



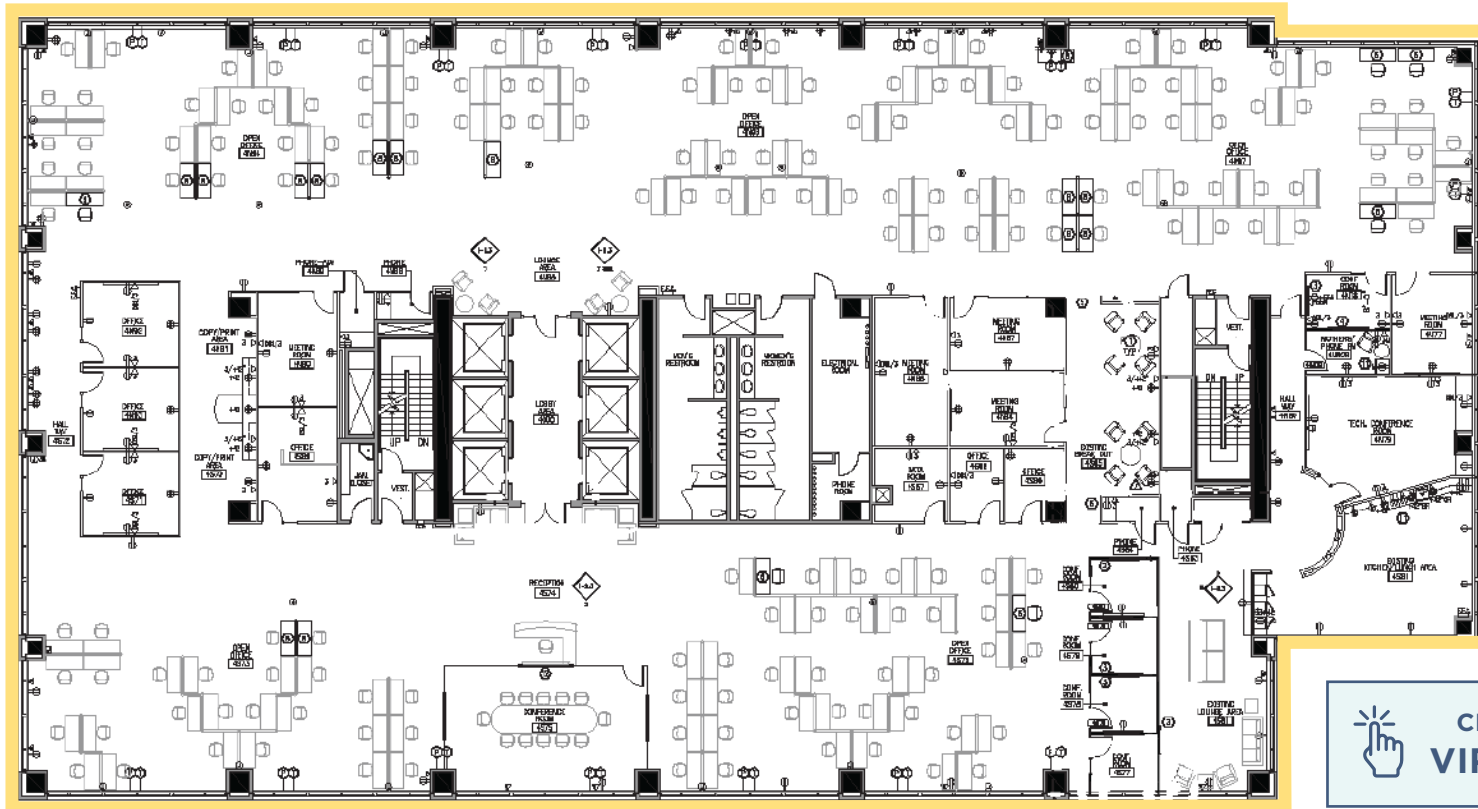
BACK TO AVAILABILITIES

# SUMMIT 2 | SUITE 400

24,229 RSF

- » Move-in ready full floor availability
- » Interior conference/meeting rooms and open space for cubicles with lots of natural light

Contiguous with Floors 3 & 5  
for up to 61,710 RSF



 [CLICK TO TAKE A VIRTUAL TOUR](#)

[↑ BACK TO AVAILABILITIES](#)

# SUMMIT 2

## SUITE 510

**3,061 RSF**

- » 3 private offices and work room
- » Open space for cubicles
- » Lots of natural light and views of Mt. Rainier



[CLICK TO TAKE A VIRTUAL TOUR](#)

# SUMMIT 2

## SUITE 550

**10,171 RSF**

- » Double glass door entry immediately off 5th floor elevators
- » Abundant natural light with views of Mt. Rainier



[CLICK TO TAKE A VIRTUAL TOUR](#)

**Both Suites Contiguous  
for 13,232 RSF**



# SUMMIT 2 | SUITE 680

7,466 RSF

- » Efficient mix of private offices and conference rooms
- » Elevator lobby exposure



Suite 680

[↑ BACK TO AVAILABILITIES](#)

# *The* SUMMIT

---

For further information or to schedule  
a tour, please contact exclusive leasing  
agents:

**TONY ULACIA**

**(425) 646-5244**

**[ulacia@broderickgroup.com](mailto:ulacia@broderickgroup.com)**

**ERIC HAEHL**

**(425) 646-5266**

**[haehl@broderickgroup.com](mailto:haehl@broderickgroup.com)**

**Broderick Group  
Bellevue Office  
10500 NE 8th Street, Suite 900  
Bellevue, WA 98004**

**Main: (425) 646-3444**

**Fax: (425) 646-3443**

**[broderickgroup.com](http://broderickgroup.com)**

**BRODERICK**  
• GROUP •

