

SOILFREEZE CENTER



FOR LEASE

*Rare Office and Secure Yard with Shop
1,378 SF Office, 45,000 SF Yard with 1,500 SF Shop*

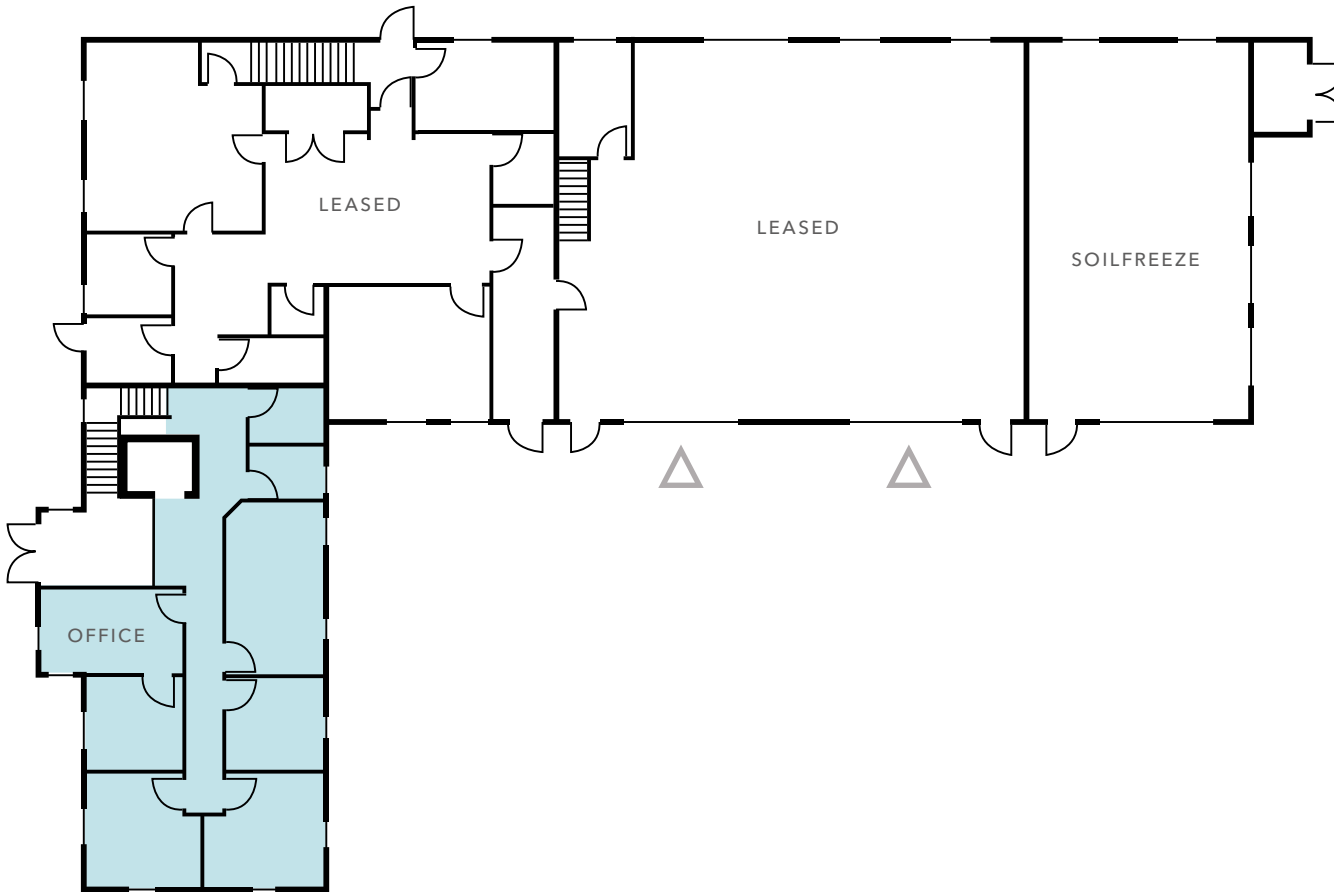
5931 238TH ST SE, WOODINVILLE, WA 98072

Exclusively leased by

ROGER THORN
425.450.1120
roger.thorn@kidder.com

RYAN FOSTER
425.450.1124
ryan.foster@kidder.com

FLOOR PLAN



45,000 SF

TOTAL YARD SF

1,378 SF

OFFICE SPACE

1,500 SF

HEATED SHOP

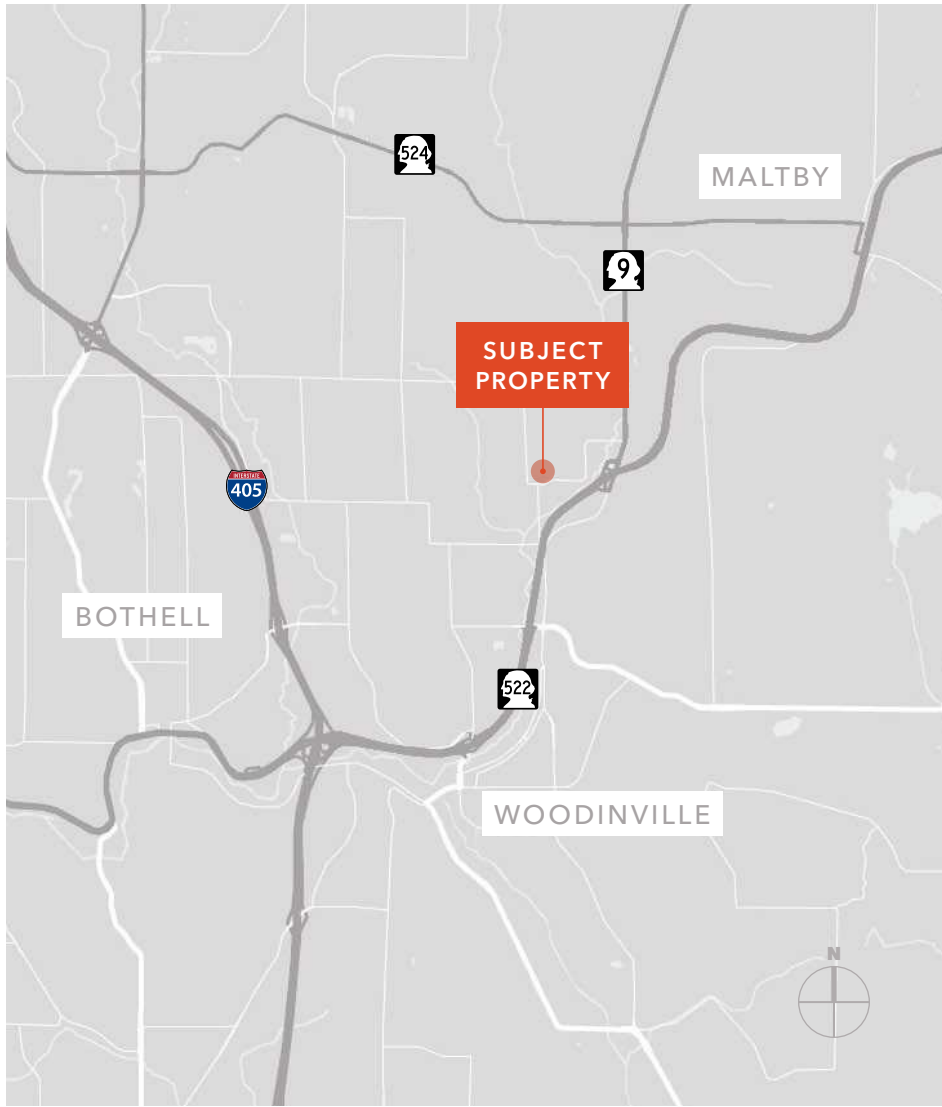
\$15,000+NNN

MONTHLY LEASE RATES

- Includes storage shed
- Owner on-site
- Zoned LI, Snohomish County
- Secure shop and yard, level and compacted



LOCATION MAP & AERIAL



SOILFREEZE CENTER





SOILFREEZE CENTER

*For more information on
this property, please contact*

ROGER THORN
425.450.1120
roger.thorn@kidder.com

RYAN FOSTER
425.450.1124
ryan.foster@kidder.com

KIDDER.COM

This information supplied herein is from sources we deem reliable. It is provided without any representation, warranty, or guarantee, expressed or implied as to its accuracy. Prospective Buyer or Tenant should conduct an independent investigation and verification of all matters deemed to be material, including, but not limited to, statements of income and expenses. Consult your attorney, accountant, or other professional advisor. All Kidder Mathews designs are the sole property of Kidder Mathews. Branded materials and layouts are not authorized for use by any other firm or person.

