

PARK 25 - BUILDING C

FOR LEASE: 3,280 SF

11102 25TH AVE E | TACOMA, WA 98445

INDUSTRIAL SPACE AVAILABLE



LEASE INFORMATION

SUITE	TOTAL SIZE	OFFICE SIZE	LOADING	AVAILABLE	LEASE RATE
C	3,280 SF	570 SF	1 GL Door	9/1/2026	Call Broker

PROPERTY HIGHLIGHTS

- Quality construction
- Grade-level loading
- 18' Clear Height
- Sprinklered
- Ample parking
- Great access to Hwy-512

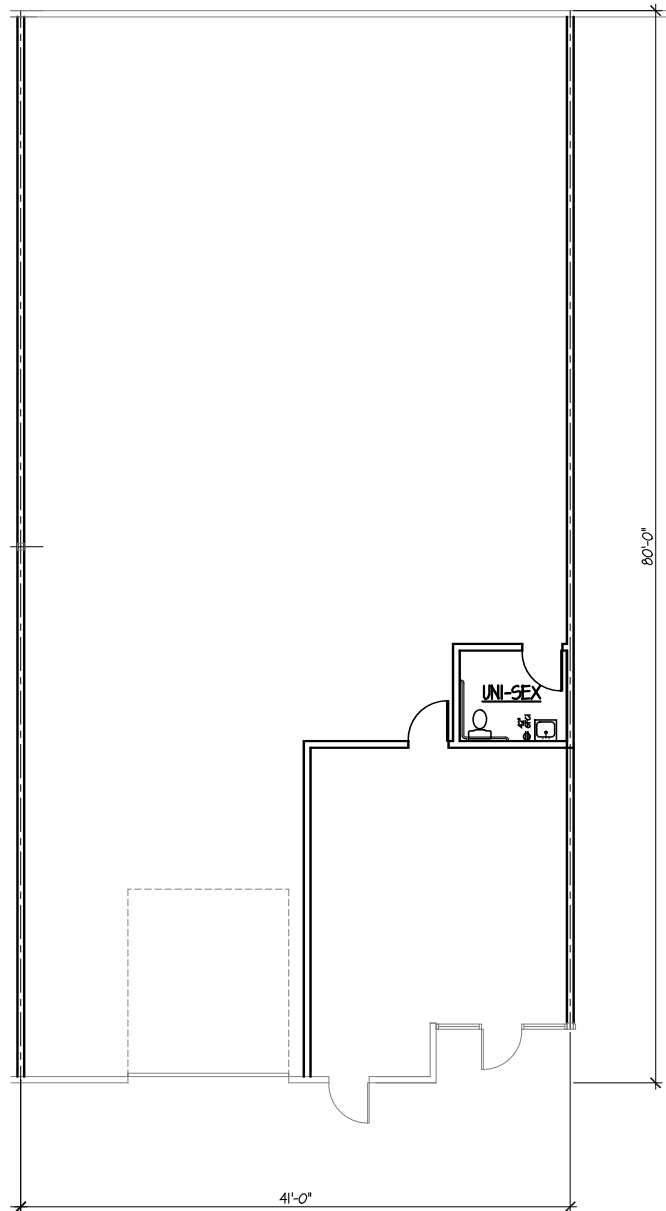


PARK 25 - BUILDING C

11102 25TH AVE E | TACOMA, WA 98445



SUITE	TOTAL SIZE	OFFICE SIZE	LOADING	AVAILABLE	LEASE RATE
C	3,280 SF	570 SF	1 GL Door	9/1/2026	Call Broker



NICK RATZKE, SIOR
253.779.2414
nratzke@neilwalter.com

BRIANA HICKEY
253.779.2424
bhickey@neilwalter.com

1940 East D St, #100
Tacoma, WA 98421
253.779.8400
www.neilwalter.com

All information references in this document are approximate. The information contained herein is contained from sources deemed reliable. It is provided without representation, warranty, or guarantee, expressed or implied as to accuracy. Prospective buyer or tenant should conduct its own independent investigation relating to the property, government codes and regulations, allowed uses, and all other matters, regardless of whether they are referred to or contained in this document.