

FOR LEASE

1307-1501 E Main Ave
Puyallup, WA 98372

AVAILABLE

AVAILABLE

NEW SPACE OPTION! 1,332 SF +/-



VALLEY PLAZA

Lisa Tallman

First Western Properties—Tacoma Inc. | 253.472.0404
6402 Tacoma Mall Blvd, Tacoma, WA 98409 | fwp-inc.com

VALLEY PLAZA is strategically positioned in the heart of Puyallup, ensuring high visibility and foot traffic. Being situated on Main Street, it benefits from a bustling commercial district with a diverse range of shops and services, attracting a steady flow of potential customers. Additionally, the area is well-connected, with easy access to major transportation routes, enhancing accessibility for both customers and suppliers.

AVAILABLE

- ▶▶ **KIOSK: 1,875± SF | \$18.25 PSF + NNN**
- ▶▶ **1323 A: 9,550± SF | \$17.00 PSF + NNN**
- ▶▶ **1501 B: 1,322± SF | \$19.00 PSF + NNN**

- NNN's estimated at \$3.84 sq.ft.
- High-visibility E Main Ave location with strong traffic counts.
- Quick access to SR-512 and I-5.
- Established commercial corridor near downtown Puyallup.
- Dense surrounding residential base and nearby fairgrounds traffic.



Population



Average HH Income



Daytime Population

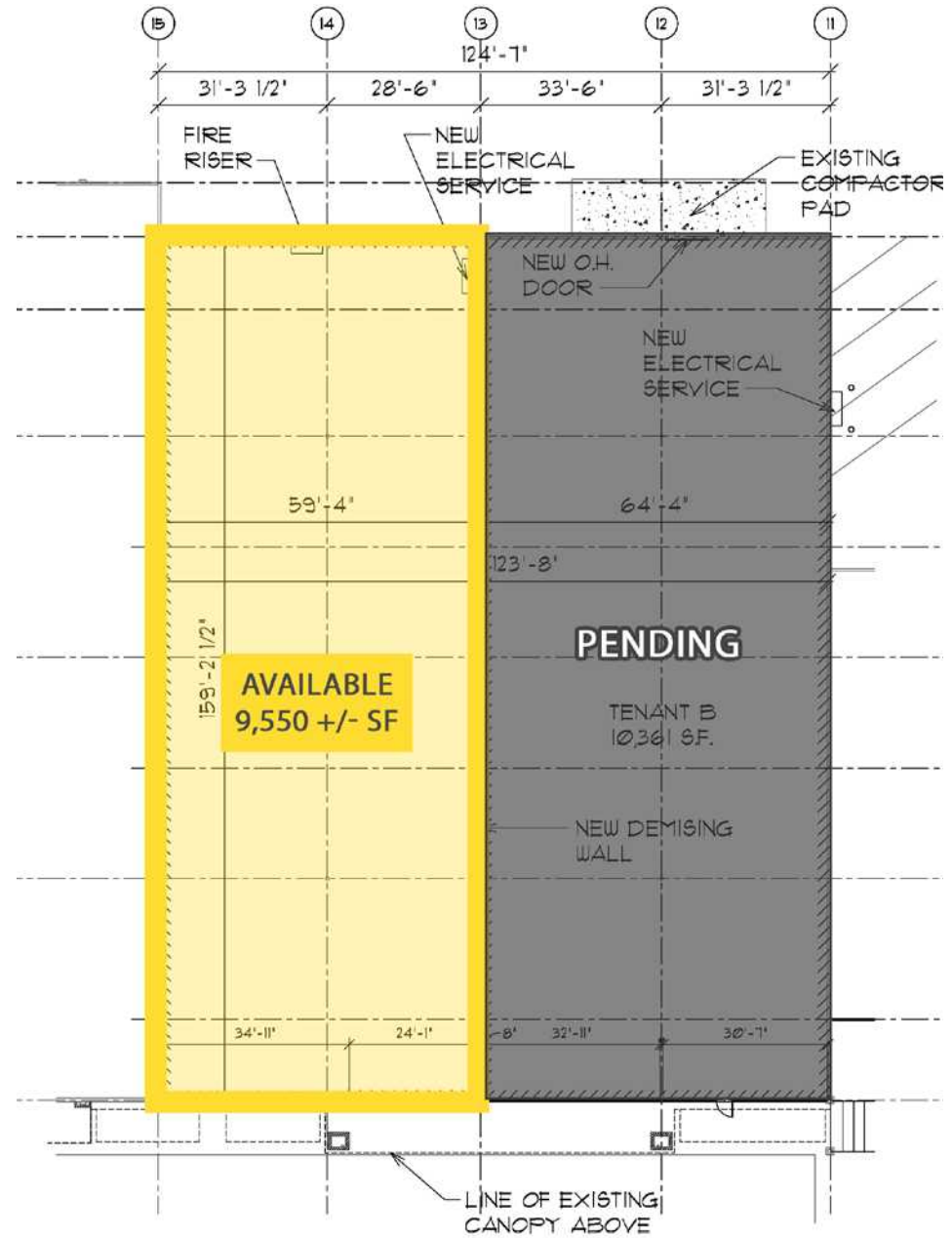
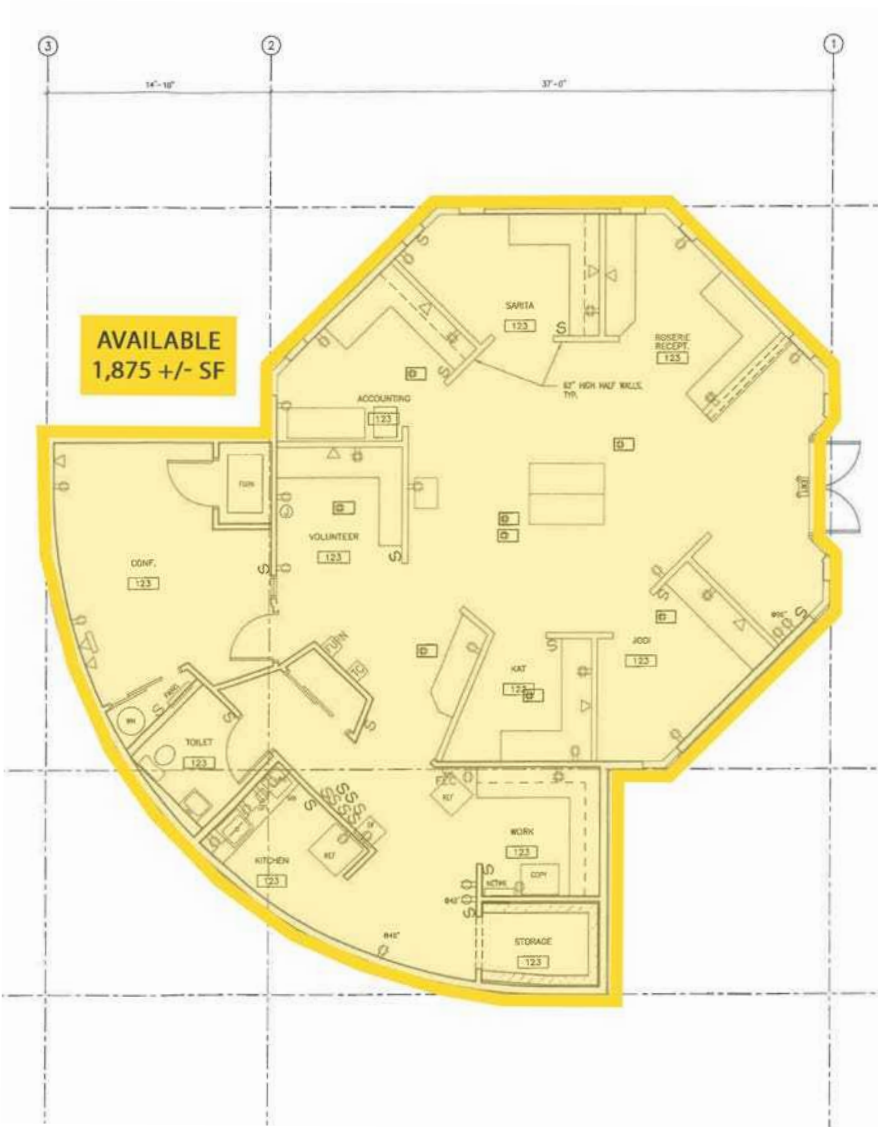
Regis - 2025

	Population	Average HH Income	Daytime Population
Mile 1	11,550	\$99,581	10,477
Mile 3	65,179	\$129,709	50,198
Mile 5	171,649	\$138,798	104,875

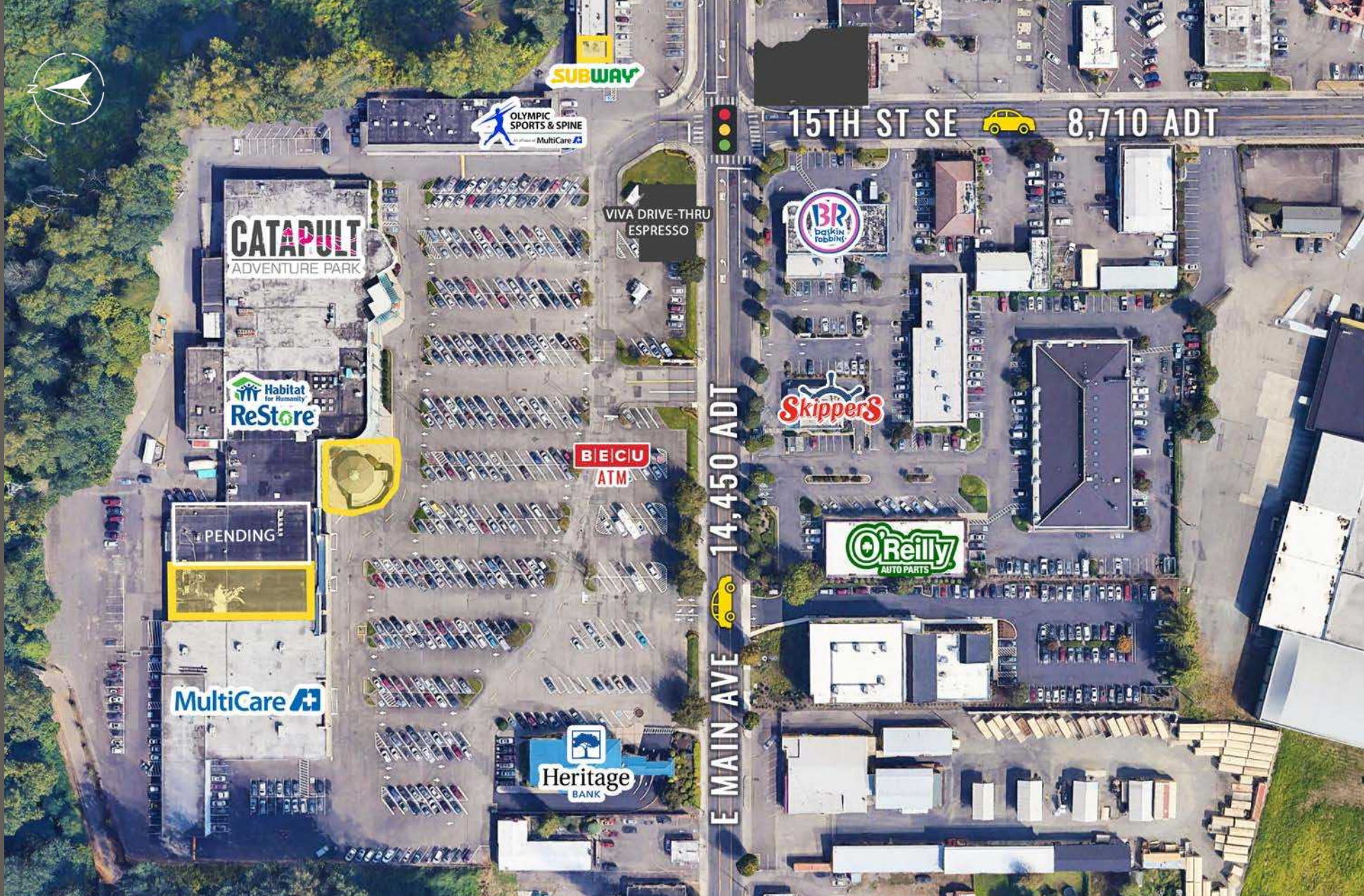
TENANTS



FLOOR PLANS



LOCATION DETAILS



Located in a Densely Populated Area



Located Moments from Major Highways

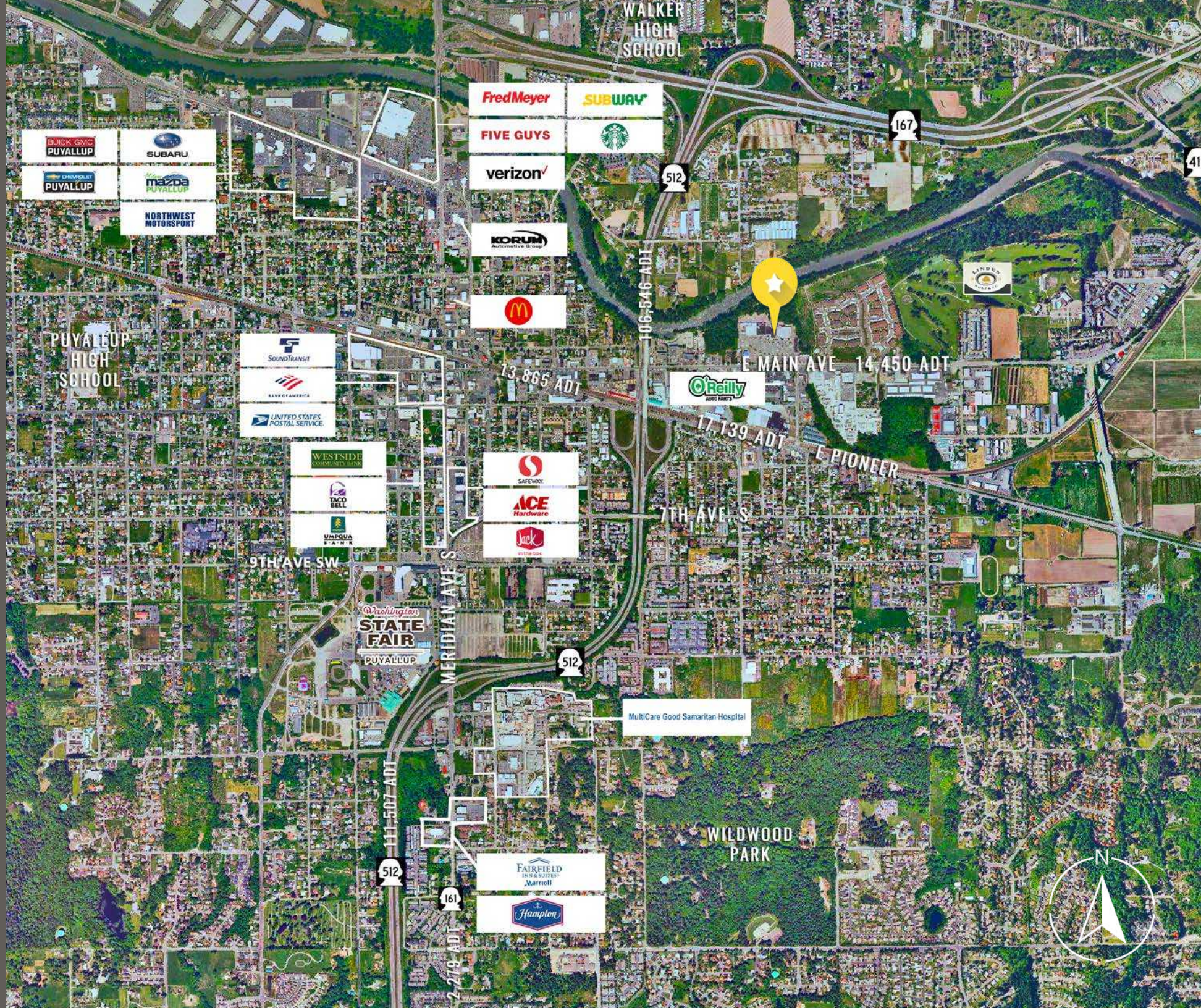


14,450 ADT E Main Ave



8,710 ADT 15th St SE

LOCATION AERIAL



SITE PLAN




Suite	SF	Tenant	Rate
1307	-	Heritage Bank	Leased
1317/1401	-	Multicare	Leased
1323A	9,550±	AVAILABLE	\$17.00 PSF
1323B	-	PENDING	PENDING
1325	-	McCallum License Agency	Leased
1327	-	Bridal	Leased
KIOSK	1,875±	AVAILABLE	\$18.25 PSF
1400	-	BECU	Leased

Suite	SF	Tenant	Rate
1405	-	Viva Espresso	Leased
1411	-	Q's Taekwando	Leased
1415	-	Teriyaki	Leased
1417/19/21/23	-	Olympic Sports & Spine	Leased
1501A	-	Subway	Leased
1501B	1,332±	AVAILABLE	\$19.00 PSF
1501C	-	Wesco Autobody	Leased

TACOMA | KIRKLAND | PORTLAND | SEATTLE

RELATIONSHIP FOCUSED.
RESULTS DRIVEN.

LISA TALLMAN

 253.471.5504

 lisa@firstwesternproperties.com



First Western Properties—Tacoma Inc. | 253.472.0404
6402 Tacoma Mall Blvd, Tacoma, WA 98409 | fwp-inc.com

© First Western Properties, Inc. DISCLAIMER: The above information has been secured from sources believed to be reliable, however, no representations are made to its accuracy. Prospective tenants or buyers should consult their professional advisors and conduct their own independent investigation. Properties are subject to change in price and/or availability without notice.