

SCOTT PLAZA

16256 MILITARY ROAD SOUTH, SEATAC, WA 98188



OFFERING SUMMARY

Available SF:	1,517 - 3,216 SF
Lease Rate:	\$18.00 SF/yr (NNN)
Lot Size:	1.89 Acres
Year Built:	2005
Building Size:	23,115 SF
Renovated:	2005
Zoning:	NB
Market:	SeaTac

PROPERTY OVERVIEW

Class A retail/office complex across from Safeway and minutes from SeaTac Airport and International Blvd. Excellent visibility with secure underground parking. Come Join H&R Block, Hair Masters, Laborworks, Impresso Espresso and other great tenants in this upscale retail center.

PROPERTY HIGHLIGHTS

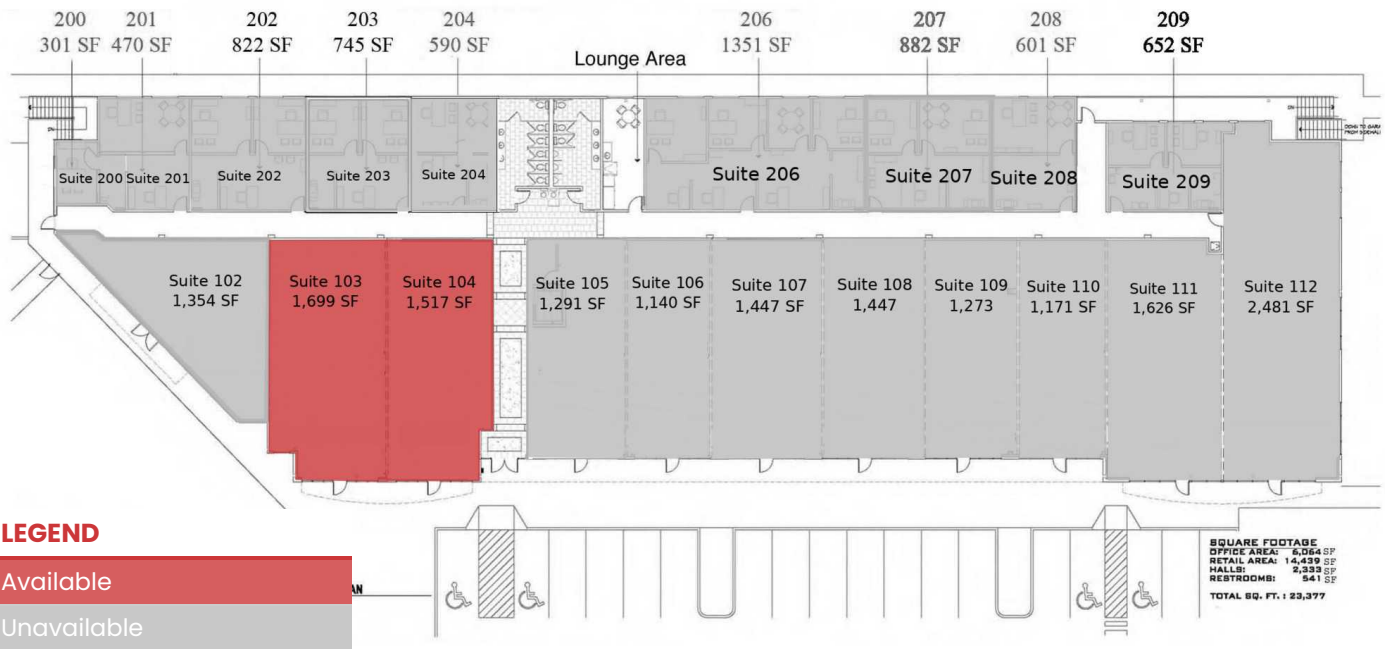
- Newer Retail/Office Complex
- Excellent Visibility and Signage
- Easy Access and Parking
- Great Tenant Mix



DAVID HALL, CCIM, CPM CANDIDATE
206.381.3883 x107
david@corecommercialproperties.com

SCOTT PLAZA

16256 MILITARY ROAD SOUTH, SEATAC, WA 98188



LEASE INFORMATION

Lease Type:	NNN
Total Space:	1,517 - 3,216 SF

Lease Term:	Negotiable
Lease Rate:	\$18.00 SF/yr

AVAILABLE SPACES

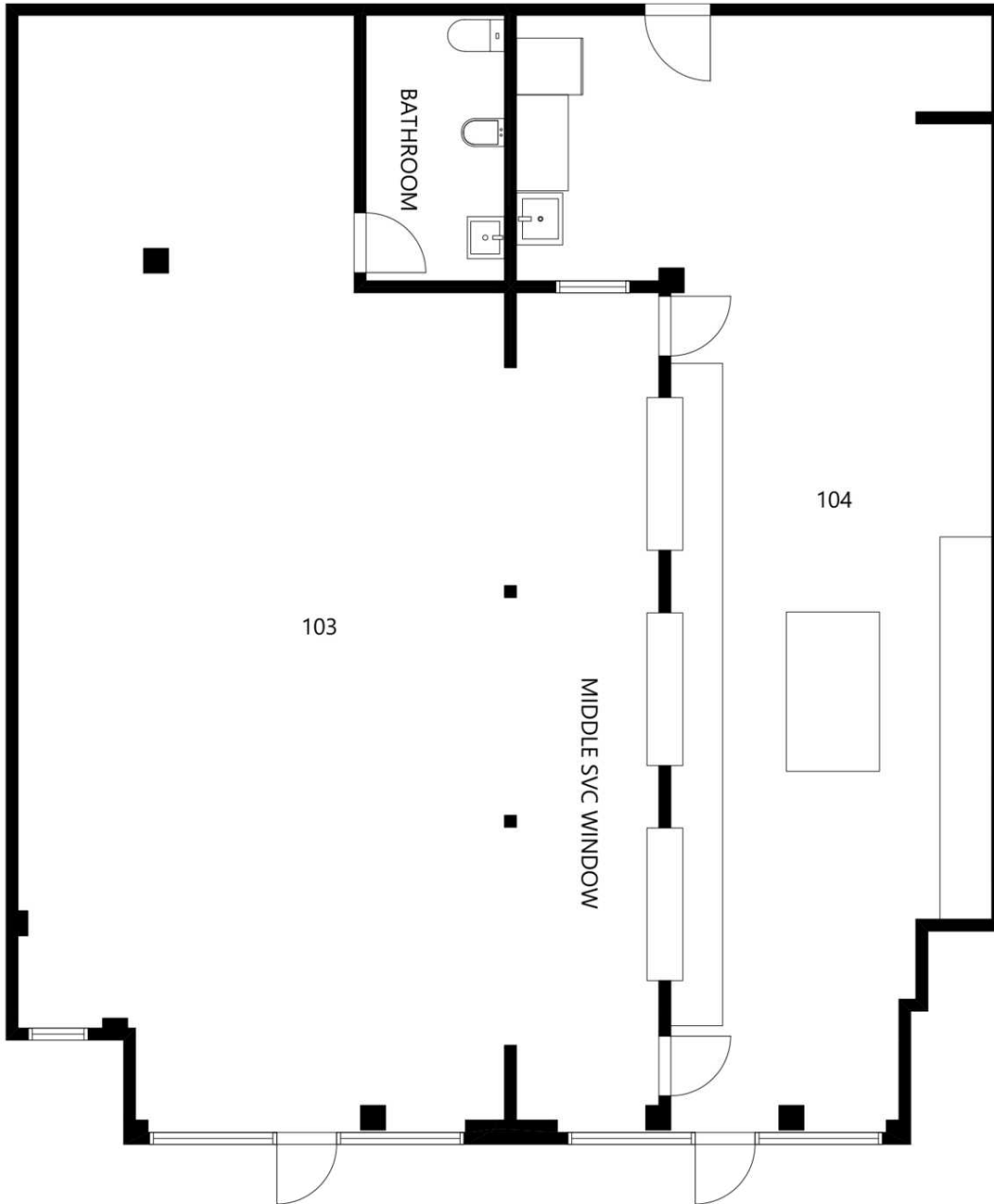
SUITE	TENANT	SIZE	TYPE	RATE	DESCRIPTION
Suite 103	Available	1,699 - 3,216 SF	NNN	\$18.00 SF/yr	High visibility retail space with large signage opportunity.
Suite 104	Available	1,517 - 3,216 SF	NNN	\$18.00 SF/yr	High visibility retail space with large signage opportunity.



DAVID HALL, CCIM, CPM CANDIDATE
 206.381.3883 x107
 david@corecommercialproperties.com

SCOTT PLAZA

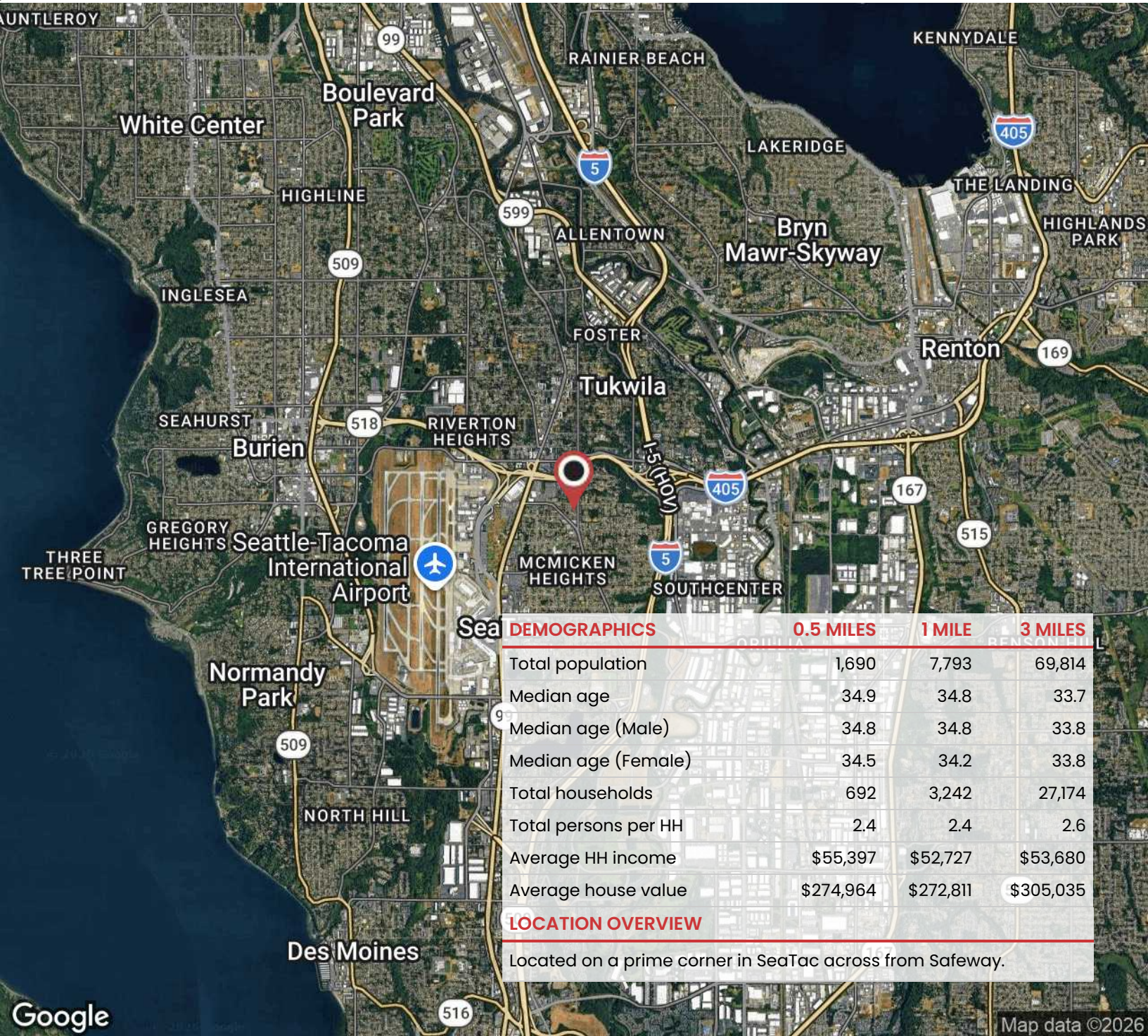
16256 MILITARY ROAD SOUTH, SEATAC, WA 98188



DAVID HALL, CCIM, CPM CANDIDATE
206.381.3883 x107
david@corecommercialproperties.com

SCOTT PLAZA

16256 MILITARY ROAD SOUTH, SEATAC, WA 98188



DAVID HALL, CCIM, CPM CANDIDATE
 206.381.3883 x107
 david@corecommercialproperties.com